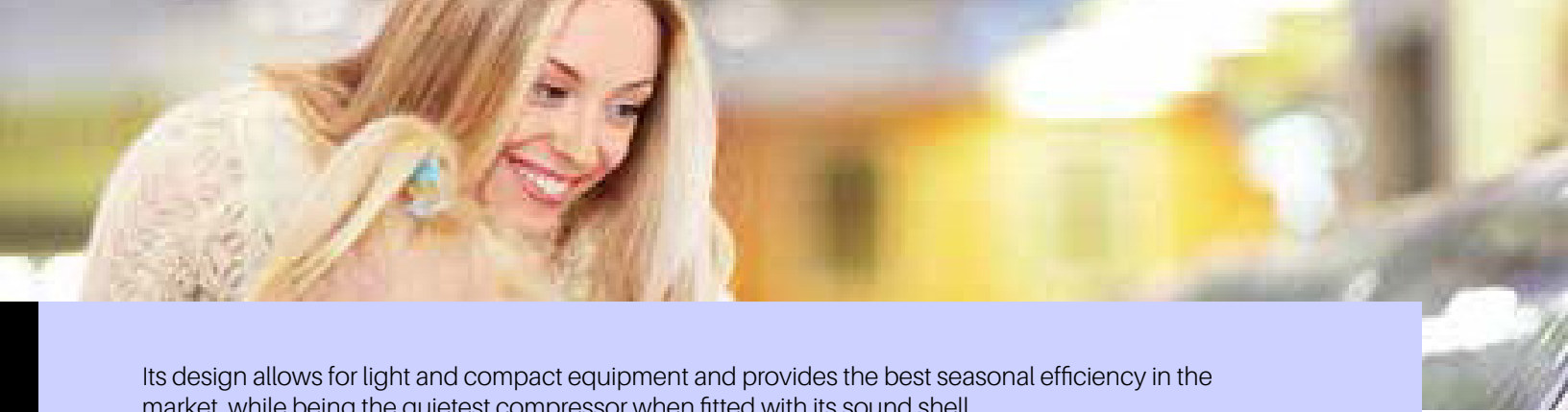


Copeland Scroll Summit series

Quietness at highest seasonal efficiency for medium and low temperature applications





Its design allows for light and compact equipment and provides the best seasonal efficiency in the market, while being the quietest compressor when fitted with its sound shell.

Copeland first introduced a few years ago the Summit series for medium temperature applications. Now, the Summit series is available for low temperature applications also and is designed to meet the specific needs of refrigeration.

Summit series ZB for medium temperature

- Range of six models including two Digital models
- Flexibility in terms of required capacity
- Seasonal efficiencies up to 15% higher than traditional semi-hermetic compressors
- Extremely quiet operation, specially adapted to applications in urban and domestic areas
- Availability of sound shell option for an additional 10 to 12 dBA sound attenuation
- Includes Copeland Scroll Digital technology for simple, stepless 10 to 100% capacity modulation
- Light weight and compactness, ideal for distributed systems
- Wide operating envelope with 10°C low condensing limit and fast pull-down capabilities
- One model for multi-refrigerants (R407A/F/C, R448A, R449A, R450, R513A, R404A and R134a)
- CoreSense option for diagnostic and protection capabilities. Possibility to control digital operation via CoreSense

Summit series ZF for low temperature

- Range of five models dedicated to low temperature including one digital model
- Each model is capable of liquid or vapor injection
- Seasonal efficiencies comparable to Copeland's best semi-hermetic compressors
- Easy, reliable and efficient liquid injection via Discharge Temperature Control (DTC) valve

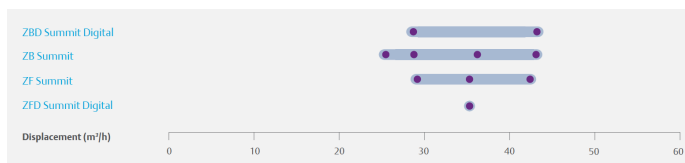
- Vapor injection (EVI) possibility to improve system efficiency by an additional 25% and boost compressor cooling capacity by 40%
- Light weight and compactness, more than half the weight of equivalent semi-hermetic compressors
- Optional sound shell for silent operation
- Wide operating envelope up to 10°C low condensing
- Double lifting hooks for better handling
- One model for multi-refrigerants (R407A/F, R448A, R449A, R404A)
- CoreSense option for diagnostic and protection capabilities. Possibility to control both liquid injection and digital control

The quietest compressor with its dedicated sound shell

As a response to environmental noise problems which are particularly disturbing in refrigeration applications, Copeland has developed a dedicated sound shell for the series. It encapsulates the compressor entirely and minimizes sound leaks allowing a 10 to 12 dBA sound attenuation. This makes Summit the quietest compressor on the market.

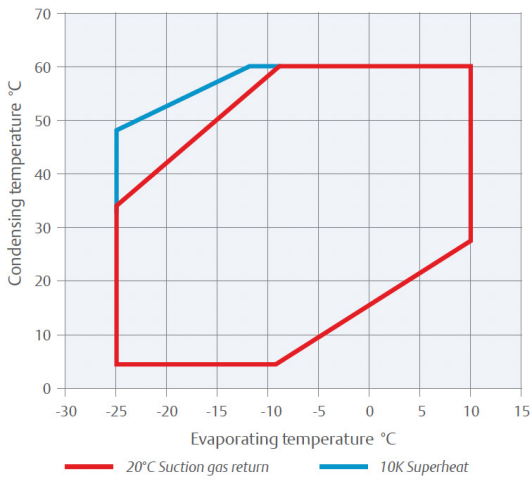


Compressor range

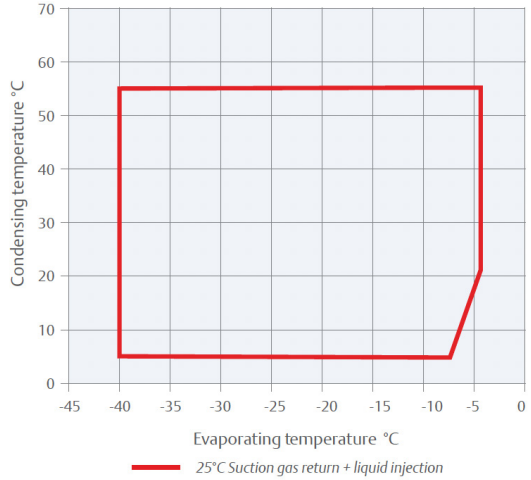


Operating envelope

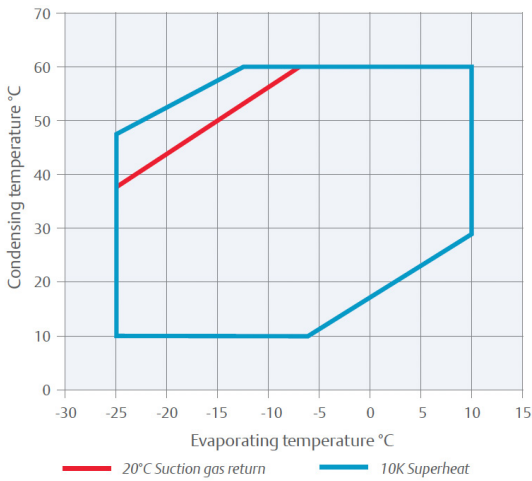
R448A/R449A ZB Scroll



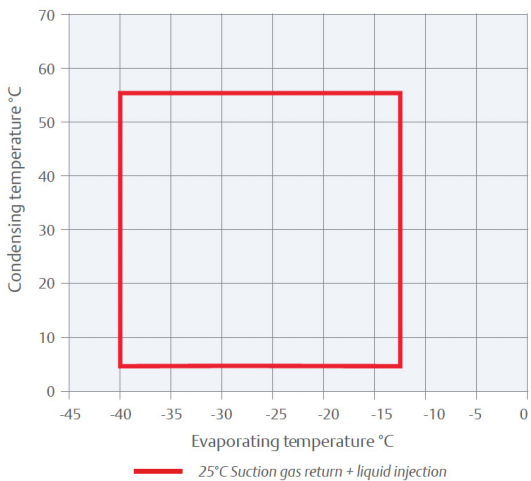
R448A/R449A - ZF Liquid Injection



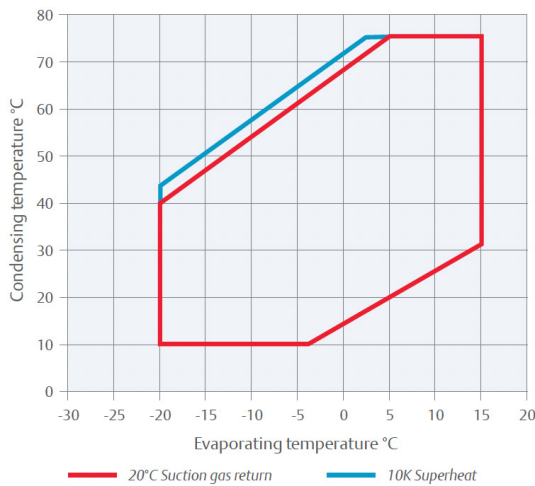
R404A - ZB Scroll



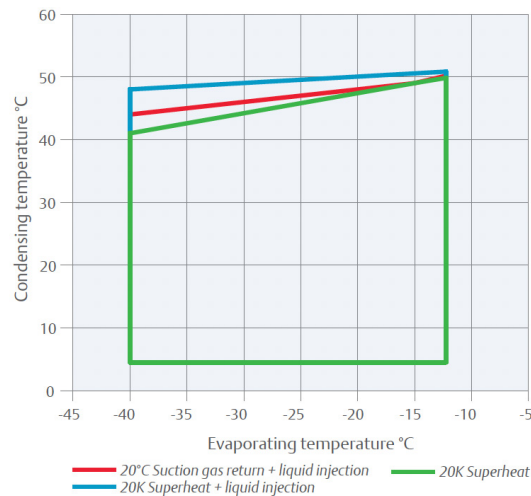
R404A - ZF Liquid Injection



R134a - ZB Scroll



R448A/R449A ZF*K5 EVI Scroll





Technical overview

Models	Nominal hp	Displacement (m3/h)	Cooling capacity (kW)		Rotolock suction (inch)	Rotalock discharge (inch)	Oil quantity (l)	Length/ width/ height (mm)	Net weight (kg)	Motor version/ code	Maximum operating current (A)	Locked rotor current (A)	Sound pressure @ 1m (dBA) ***
			R448A/ R449A	R407A						3 Ph**	3 Ph**	3 Ph**	
ZB Models													
ZB66K5E	10.0	25.7	14.7	14.4	1 3/4	1 1/4	3.4	280/280/534	59.9	TFD	17.5	111.0	66
ZB76K5E	12.0	28.8	17.3	16.7	1 3/4	1 1/4	3.4	280/280/534	61.2	TFD	20.4	118.0	67
ZB95K5E	13.0	36.4	21.1	20.7	1 3/4	1 1/4	3.4	280/280/552	64.9	TFD	28.2	140.0	69
ZB114K5E	15.0	43.4	25.1	24.1	1 3/4	1 1/4	3.4	280/280/552	66.2	TFD	33.5	174.0	72
ZBD Summit Digital Models													
ZBD76K5E	10.0	28.8	17.6	17.1	1 3/4	1 1/4	3.4	299/280/534	61.2	TFD	24.0	118.0	66
ZBD114K5E	15.0	43.3	25.5	24.1	1 3/4	1 1/4	3.4	299/280/552	68.9	TFD	33.3	174.0	71
ZF Summit Models with Liquid Injection													
ZF25K5E	7.5	21.4	4.9	4.3	1 1/4	1 1/4	1.9	246/257/452	39.5	TFD	16.0	102.0	70
ZF34K5E	10.0	29.1	6.1	5.9	1 3/4	1 1/4	3.4	280/280/534	63.1	TFD	25.0	100.0	68
ZF41K5E	13.0	35.3	7.6	7.3	1 3/4	1 1/4	3.4	280/280/534	63.1	TFD	29.0	118.0	69
ZF49K5E	15.0	42.4	9.1	8.6	1 3/4	1 1/4	3.4	280/280/552	66.2	TFD	30.0	139.0	72
ZF54K5E	17.0	48.3	10.0	9.5	1 3/4	1 1/4	3.4	363/312/552	66.2	TFD	31.0	168.0	78
ZF Summit Models with Vapor Injection													
ZF25K5E EVI	7.5	21.4	6.2	6.1	1 1/4	1 1/4	1.9	246/257/452	39.5	TFD	16.0	102.0	70
ZF34K5E EVI	10.0	29.1	8.1	8.0	1 3/4	1 1/4	3.4	280/280/534	63.1	TFD	25.0	100.0	68
ZF41K5E EVI	13.0	35.3	9.9	10.1	1 3/4	1 1/4	3.4	280/280/534	63.1	TFD	29.0	118.0	69
ZF49K5E EVI	15.0	42.4	11.8	12.1	1 3/4	1 1/4	3.4	280/280/552	66.2	TFD	30.0	139.0	72
ZF54K5E EVI	17.0	48.3	14.1	14.5	1 3/4	1 1/4	3.4	363/312/552	66.2	TFD	31.0	168.0	78
ZFD Summit Digital Models for Liquid and Vapor Injection													
ZFD41K5E	13.0	35.3	7.4	7.3	1 3/4	1 1/4	3.4	310/280/534	66.2	TFD	20.4	118.0	73
ZFD41K5E EVI	13.0	35.3	9.9	10.1	1 3/4	1 1/4	3.4	310/280/534	66.2	TFD	20.4	118.0	73

** 3 Ph : 380-420V/50Hz

*** @ 1m : sound pressure level at 1m distance from the compressor, free field condition

Conditions for ZB/ZBD: Evaporating -10°C, condensing 45°C, suction gas return 20°C, subcooling 0K

Conditions for ZF/ZFD: Evaporating -35°C, condensing 40°C, suction gas return 20°C, subcooling 0K

For more details, see copeland.com/en-gb

Copeland Europe GmbH
 Pascalstrasse 65 - 52076 Aachen, Germany
 Tel. +49 (0) 2408 929 0 - Fax: +49 (0) 2408 929 570 - Internet: copeland.com/en-gb
 The Copeland logo is a trademark and service mark of Copeland LP or one of its affiliates.
 Copeland Europe GmbH shall not be liable for errors in the stated capacities, dimensions, etc., as well as typographic errors.
 Products, specifications, assumptions, designs and technical data contained in this document are subject to modification by us without prior notice. Illustrations are not binding.
 ©2024 Copeland LP.