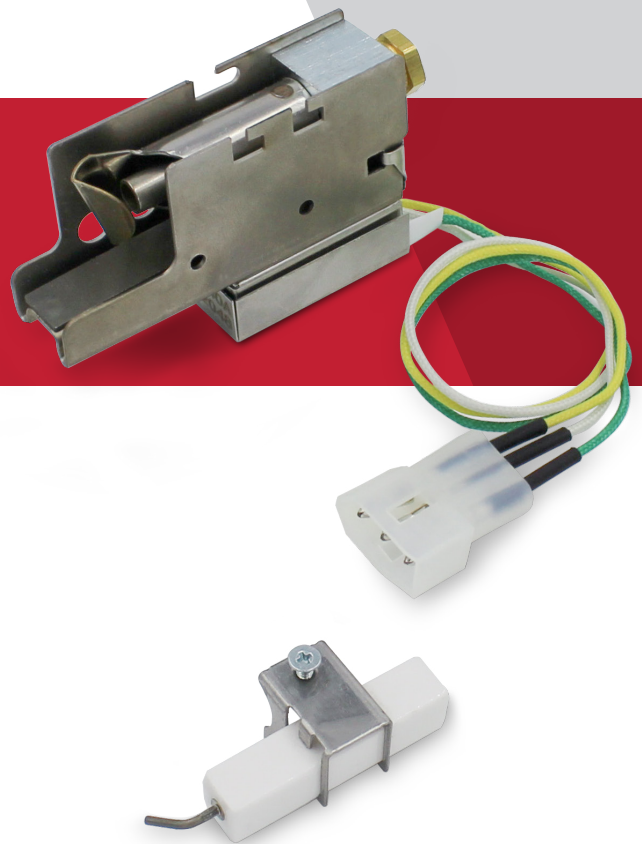


D
OEM Direct

Premium Carrier/ICP Pilot Burner Assembly

791P-751KT1

OEM quality for Carrier
replacements including
LH680005



OEM Quality

OEM qualified source made from
original factory tooling
3-wire OEM connector
Includes factory installed electrode
LP orifice included



Durable Design

100% Factory performance testing
Proprietary bi-metal switch protects
against oxidation and scaling
CSA certified

WHITE-RODGERS™


EMERSON™

791P-751KT1 Premium Carrier/ICP Pilot Burner Assembly

BENEFIT ANALYSIS:

Feature	Description	Benefit
Proprietary Design	The only Carrier (OEM qualified) source to produce these combustion ignition components	OEM Quality
Original Tooling	Critical components made using original factory tooling	OEM Quality
Proprietary Bi-metal Switch	Proprietary bi-metal switch manufactured using precious metals contacts to protect them from oxidation and scaling	OEM Quality
Factory Tested	100% performance tested including switch timing	Peace Of Mind Safe
Factory Calibrated	Each assembly ignited and calibrated using natural gas	Accurate Operation
Certified	CSA certified	Certification Backing
Warranty	3-Year Limited Warranty	Peace of Mind Backing

SPECIFICATIONS:

Input Voltage.....18-33 VAC, 60 Hz
 Input Current..... 1.0 Amp
 Operating Temperature Range..... -40 to 1225 °F (-40 to 662 °C)
 Lead Wire Length.....9.125”
 Lead Wire Gauge 18 AWG
 Spark GAP (Minimum)0.156”

Gas type	Input Rating	Orifice Size	Regulator Setting
Natural Gas	875 +/- 10% BTU/hr	0.018"	5.00 +/- 0.25"WC
LP Gas	725 +/- 10% BTU/hr	0.012"	11.00 +/- 0.25"WC

CROSS REFERENCES:

Carrier/ICP Brands	535-740 535-740A LH680005 LH33JZ053* AP5641413 P671-1406	Supco FLS0005 Robertshaw 1830-620 1830-620K	DiversiTech FC-74 MARS 67945	Generic (unspecified brand) PS730A White-Rodgers 791P-751KT1
---------------------------	---	---	---	---

* 2-wire assembly requires cutting connector and green ground wire on 791P-751KT1

THE WHITE-RODGERS MOBILE APP:

Answers at your fingertips, with your smartphone or tablet.

- ✓ Latest cross reference
- ✓ Installation instructions
- ✓ Spec sheets
- ✓ Product selection



R-5501 (12/21)

©2021 Emerson Electric Co. • White-Rodgers and Emerson are trademarks of Emerson Electric Co. All rights reserved • Customer Service or Technical Help: 888-725-9797 • Emerson.com/White-Rodgers

PILOT ASSEMBLY COMPONENTS:

- Pilot burner assembly with safety switch and OEM quick connect plug
- Factory installed electrode assembly

