

Trane single stage-80V ignitor HSI integrated furnace control kit

OEM replacement

*Direct replacement
is fast and easy*

50A65-5165

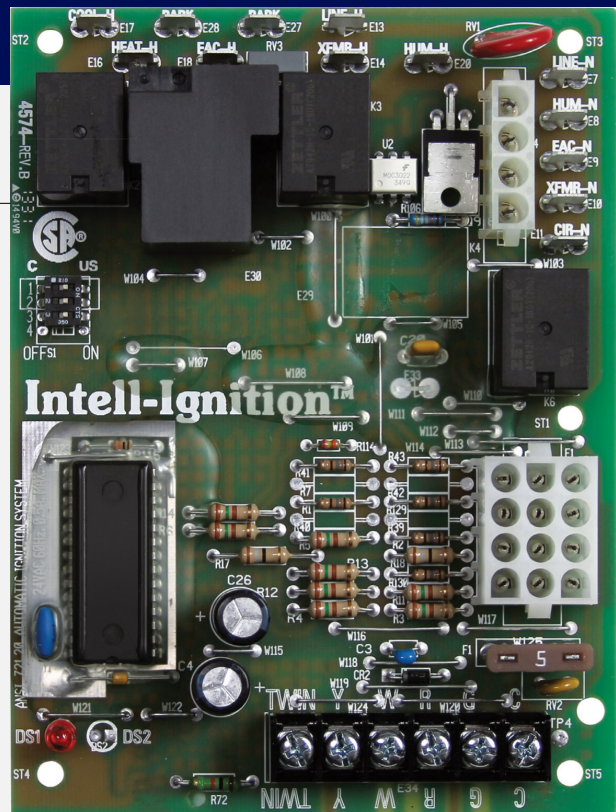
Replaces:

White-Rodgers by Copeland and Trane single stage HSI controls with 80V ignitors

50A65-5165 simplifies installation and ensures peak system performance

Easy install kit includes everything you need for quick and accurate replacement:

- Ignition control module
- Installation instructions and OEM cross-reference



Features:

- 80 VAC ignitor output
- 120 VAC humidifier output
- 120 VAC electronic air cleaner output
- 120 VAC 2-speed PSC circulator output
- Fuse protection — 5 amp
- Furnace status LED
- Heat fan OFF delay (dipswitch selectable)
- Y, W, R, G, C, TWIN terminals

50A65-5165 replaces:

Trane	White-Rodgers
CNT03076	50A65-474
CNT03798	50A65-475
CNT05164	50A65-476
CNT05165	50A65-476
D341213P01	
D341396P01	
D341396P03	
D341396P04	
D341396P05	

Specifications

Electrical ratings [@ 77°F (25°C)]

- Input voltage: 25 VAC 50/60 Hz
- Max. input current @ 25 VAC: 0.45 amp

Relay load ratings

- Valve relay: 1.5 amp @ 25 VAC 50/60 Hz 0.6 pf
- Ignitor relay: 2.0 amp @ 120 VAC 50/60 Hz (resistive)
- Inducer relay: 2.2 FLA–3.5 LRA @ 120 VAC
- Circulator relay: 14.5 FLA–25.0 LRA @ 120 VAC

Flame current requirements

- Minimum current to insure flame detection: 1 µA DC*
- Maximum current for non-detection: 0.1 µA DC*
- Maximum allowable leakage resistance: 100 M ohms

*Measured with a DC microammeter in the flame probe lead

Operating temperature range

-40° to 175°F (-40° to 80°C)

Humidity range

5% to 93% relative humidity (non-condensing)

Mounting

Surface mount multipoise

Timing specifications (@ 60 Hz**)

	Maximum
Flame establishing time:	0.8 sec
Flame failure response time:	2.0 sec

**At 50 Hz, all timing specifications should be increased by 20%

Gases approved: natural, manufactured, mixed, liquified petroleum and LP gas/ air mixtures are all approved for use.

Dimensions

- 4.4" W x 5.9" H x 1.25" D

For additional information

Visit www.copeland.com/white-rodgers

Timing specifications:

50A65-5165	
Pre-purge	0
Ignitor warm-up	20
Ignition activation period	2
Trial for ignition period	5
Retries	2 times
Valve sequence period	15
Interpurge	60
Post-purge	5
Lockout time	300
Heat delay to fan ON	45
Heat delay to fan OFF*	60/100/140/180
Cool delay to fan ON	2
Cool delay to fan OFF	0/80
Auto reset	15 minutes
Humidifier	Yes
Electronic air cleaner	Yes

* These times will vary depending on option switch position. See OPERATION section for further information.