

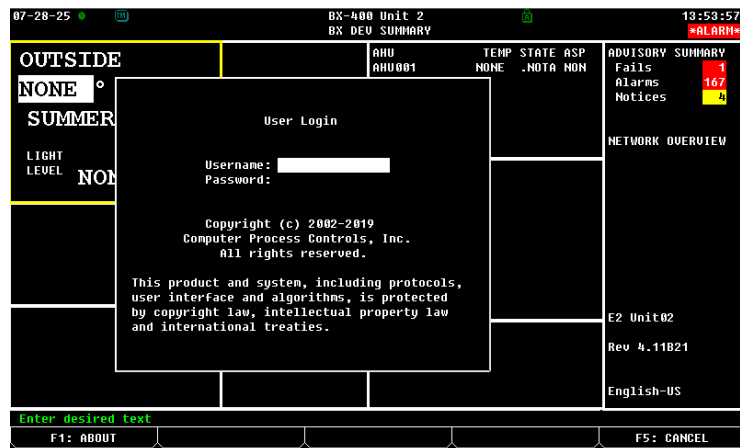
CC200 Software Retrofit





Software Backup Instructions for CC200 Retrofits using E2 Controllers

When preparing for retrofitting a CC200, follow the below instructions for software configuration:

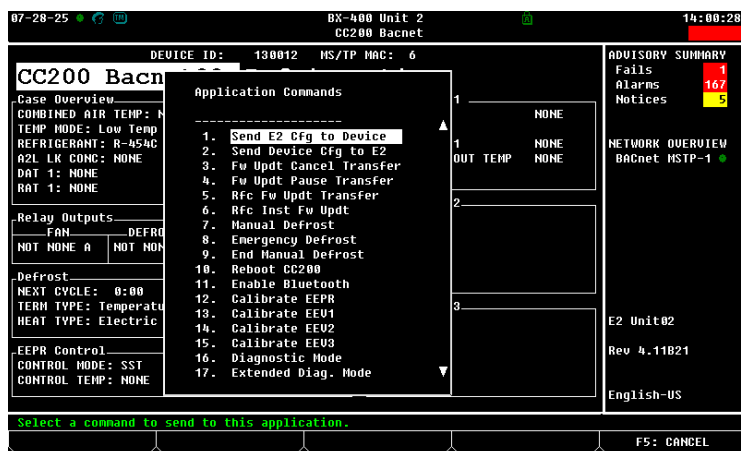


1. Log into your E2 controller:



2. Open the Application Instance that is being replaced.
3. Press the  key and select  - **Configured Applications**.
4. Choose the application from the list. You are now on the application **Status** screen.
5. From the application **Status** screen, press the  key for the **Actions** menu.
6. Choose  - **Application Commands**.

7. Choose **Send E2 Cfg to Device**.



8. Wait approximately 15 minutes for all the data to be synced.
9. In the **C1 - General** tab, set **Send E2 Cfg to Device**.



10. Safely power down the old CC200 controller being replaced.
11. Replace the old CC200 with the new CC200 controller. Power ON the new CC200.
 - **NOTE:** DO NOT connect the Ethernet or Comms cable before setup.
12. Set up the new CC200 with the information from the old CC200 being replaced:
 - IP address octet 1 (iP1)
 - Rack id (rid)
 - Circuit lineup id (Lid)
 - Case id (Cid)
 - Router
 - MS/TP related parameters (if BACnet MSTP)
 - Save and wait for the reboot
13. Reconnect the Comms cable and the Ethernet cable.
14. Confirm the new CC200 comes online and data is synced back to the device.

Visit our website at copeland.com/en-us/products/controls-monitoring-systems for the latest technical documentation and updates.
For Technical Support call **833-409-7505** or email ColdChain.TechnicalServices@Copeland.com