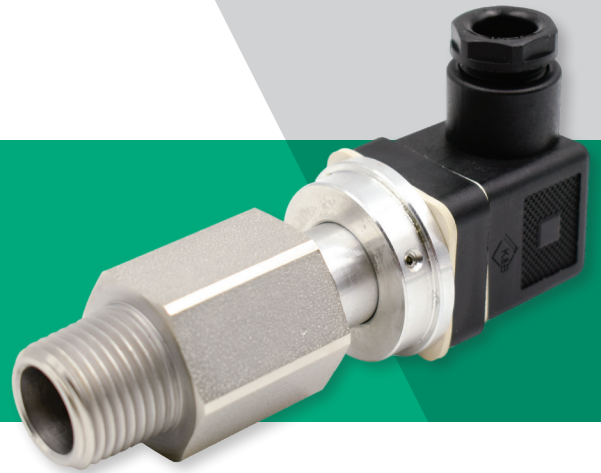


OLS

Optical Level Switch

Reliable detection for fluid levels



Reliable Performance

Digitally-conditioned output to eliminate false alarms for consistent monitoring



Simple Installation

Multiple connections available: UNF, NPT, Rotolock



Code Compliant

Electrical connection options: DIN, Junction Box, Free Leads



Refrigerant Compatible

For use with CO₂, natural refrigerants, A1 & A2L refrigerants and oils

SPECIFICATIONS

Housing Material:

Nickel plated steel

Male Conduit Connection:

Zinc plated steel

Mounting:

Horizontal only

Switch Inductive Rating:

36va pilot duty rated

Minimum Load:

2ma (without bleed resistor)

Power for Operation:

3.5ma AC

Contact Rating:

Over 1 million cycles at rated load

Temperature Rating:

0°-200° F (-18°-93° C)

Liquid Lever Switch Point:

Glass centerline

Pressure Rating:

1000 PSI (69 bar) working,
5000 PSI (345 bar) burst

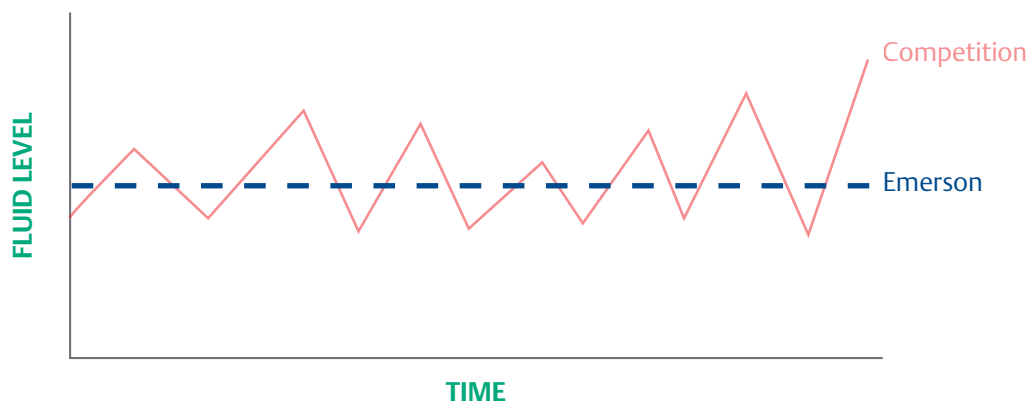
Internal Time Delay:

1.3 seconds

Agency Certification:

UL/CUL File Number E85974

DIGITALLY-CONDITIONED OUTPUT TO ELIMINATE FALSE ALARMS



Emerson provides consistent monitoring by eliminating data anomalies.

ORDERING INFORMATION

MODEL NUMBER
OLS DNP-240NO
OLS DNP-024NO
OLS DNP-024NC
OLS DNS-024NC
OLS FLP-024NO
OLS FLP-240NO
OLS FLR-120NO
OLS JBP-240NO
OLS JBS-240NO

AVAILABLE OPTIONS

Model Number Nomenclature - Example: OLS DNP-240NO

ELECTRICAL CONNECTIONS	TANK CONNECTIONS	INPUT VOLTAGE	SWITCH TYPE
DN	P	240	NO
JB = Junction Box with Leads FL = 6" Stripped Leads (For Conduit Fitting) DN = 4 Pin Din Plug (Size: M5) CB = 6' Cable (In Non-Shielded Jacket) SG = Sight Glass Only	P = 1/2" NPT R = 1 1/4" - 12 Rotolock S = 3/4" - 16 UNF Threads (Includes O-Ring)	024 = 24 VAC/DC 120 = 120 VAC 240 = 208/240 VAC	NC = Normally Closed NO = Normally Open

THE WHITE-RODGERS MOBILE APP:

Answers at your fingertips, with your smartphone or tablet.

- ✓ Latest cross reference
- ✓ Installation instructions
- ✓ Spec sheets
- ✓ Product selection

