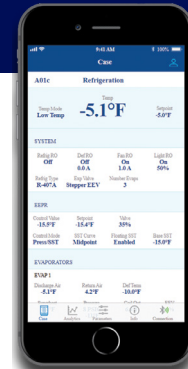


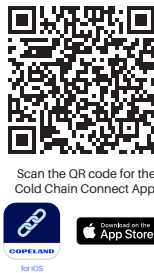
# Cold Chain Connect Mobile Application

*Cold Chain Connect is a mobile application for connecting to the CC200 refrigerated case controller. This document is a guide for using the Cold Chain Connect App to set parameters, graph inputs and outputs, set service overrides, and view alarms. Cold Chain Connect provides a window into CC200 operation and diagnostics directly at the location of the refrigerated fixture or walk-in box.*

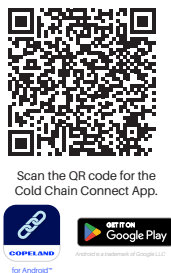


## Download the Cold Chain Connect Application

Download the Cold Chain Connect App from the App Store®:

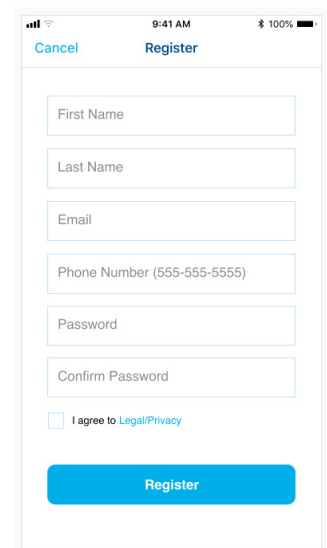
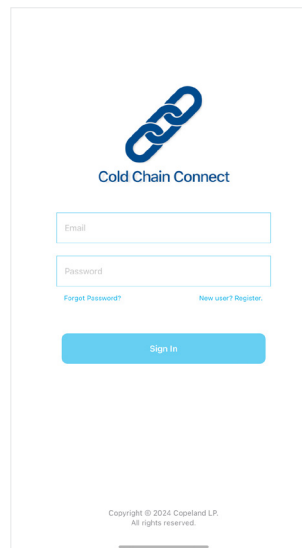


Download the Cold Chain Connect App for Android™ at the Google Play Store:



## Register the App

- Select **New User? Register**.
- Fill out all the required fields and press **Register**.
- You will receive an email once your account has been activated.



## How to Activate Bluetooth® on the CC200 Case Display

- a. **Step 1: Unlock Screen:** Press and hold for three seconds on the top right corner of the screen. Once the Display is unlocked, **SET** will be visible in the bottom left corner and **PRG** will be visible in the top right corner:



### NOTICE

After 5 minutes with no touch activity, the Display keyboard locks automatically.

- b. **Step 2: Virtual Keyboard:** Swipe left or right to navigate to the virtual keyboard:



- c. **Step 3: Turn ON Bluetooth®:** From the virtual keyboard, press and hold the Bluetooth® icon on the top right corner for three seconds.
- d. Once Bluetooth® is activated, a small Bluetooth® status icon in the lower right corner of the Display will begin to blink slowly, indicating the CC200 is ready for connection. The Bluetooth® status icon turns solid when Cold Chain Connect is actively connected.

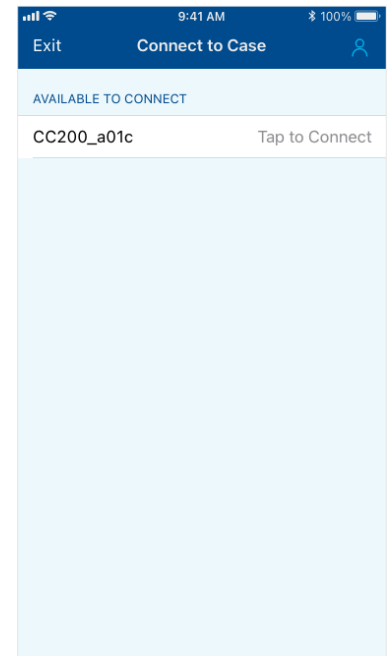


### NOTICE

After 10 minutes with no connection from Cold Chain Connect, Bluetooth® on the CC200 switches off automatically.

## Connecting to a Case

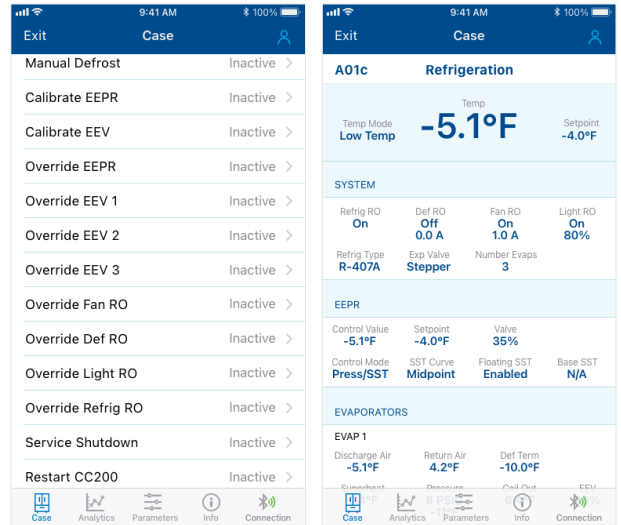
- a. Once the CC200 Bluetooth® is ON (refer to Step 3) and the Bluetooth® icon is blinking slowly, the CC200 is ready to connect to the Cold Chain Connect App.
- b. Turn Bluetooth® ON the mobile device or tablet. Open Cold Chain Connect and sign in. After signing in, Cold Chain Connect will scan for nearby CC200 controllers and available controllers will be displayed as shown in the below graphic.
- c. Tap the name of the CC200 you wish to connect to:




## Information on the Case Tab

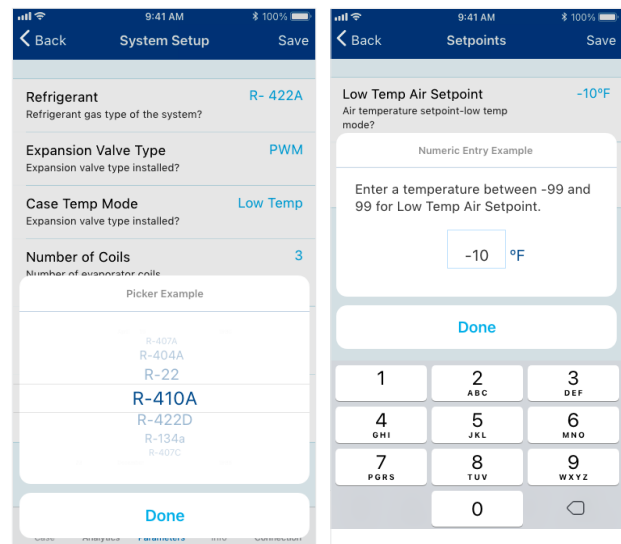
Once a connection with a CC200 has been established, the Case tab will appear with CC200 status information and available service commands.

- Case Temp
- Case Superheat
- Status of the relay outputs
- Overrides
- Pressures
- Alarms



## How to Set Parameters

- Select the **Parameters**  tab at the bottom of the application.
- On the Parameters screen, a list of parameter groups is shown.
- Touch the first group name to enter the group and begin the configuration process.
  - Each group will have a list of parameters and a description. The current value of the parameter is shown in blue to the right of the name.
- Touch the first parameter in the group to bring up the edit control.
  - Enter the desired value and press **Done**. The new edit will be displayed above the original value of the parameter.
- Edit all the desired parameters within the group.
  - Press **Save** in the top right corner of the Group screen.
- Repeat the procedure for all the groups.

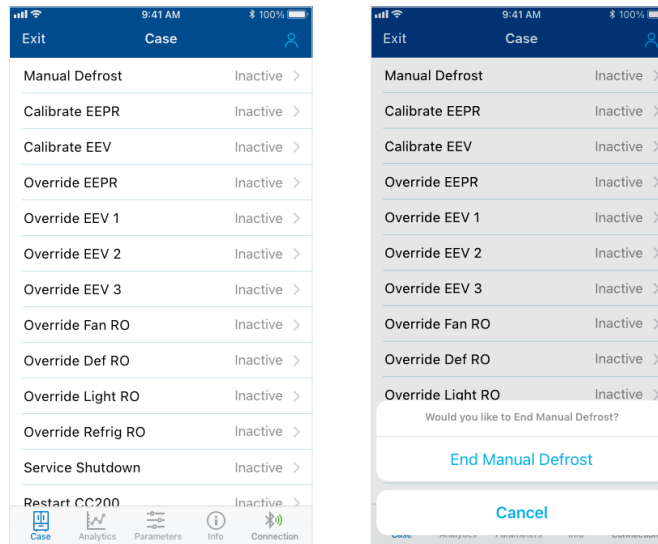


### NOTICE

Pressing Back discards any edits selected for that group and they will not be saved to the CC200.

## Manual Defrost

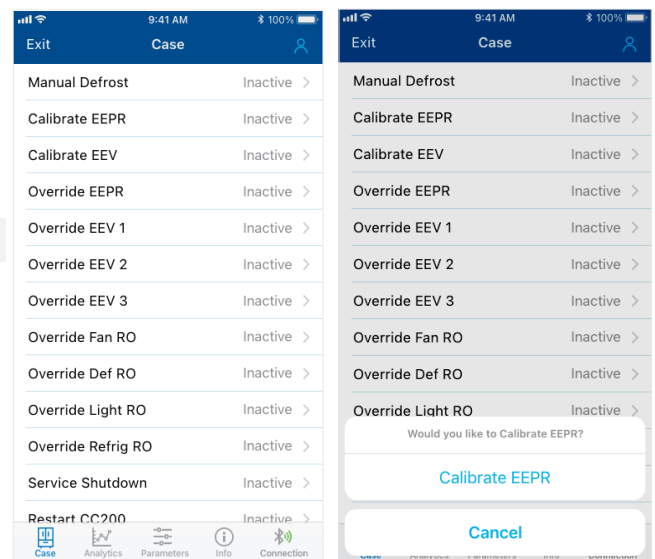
- From the dashboard, scroll down to **COMMANDS**.
- Select **Manual Defrost**.
- A pop-up will appear with two options:
  - **Manual Defrost** - This option puts the CC200 into a defrost cycle immediately. The CC200 will terminate the defrost according to the programmed defrost parameters as if it were a normally scheduled defrost cycle.
  - **Emergency Defrost** - This option puts the CC200 into a defrost cycle immediately; however, the CC200 will run the defrost cycle for the maximum period of time programmed in the defrost parameter group.
- To cancel the **Manual Defrost** or Emergency Defrost:
  - Select **Manual Defrost** again and now, a pop-up window to End Manual Defrost will appear. Select **End Manual Defrost** and the defrost is now cleared.



## Calibrate Valve

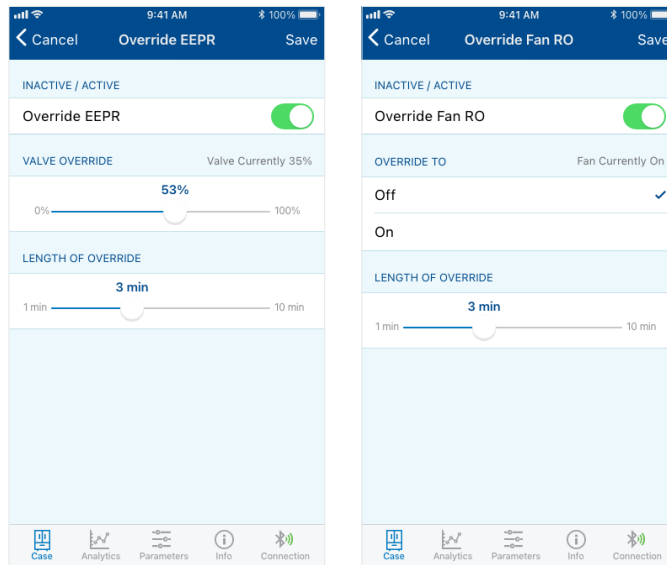
- From the dashboard, scroll down to **COMMANDS**.
- Select **Calibrate EEPR**.
- The valve will start calibrating.

**NOTICE** The calibration cannot be stopped once it has started.



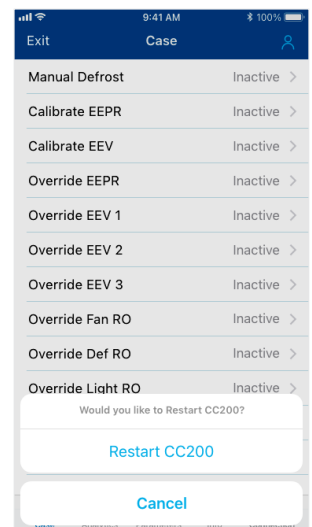
## Overrides

- a. From the dashboard, scroll down to **COMMANDS**.
  - You will see a list of overrides that can be manually configured.
  - All overrides are timed and with a maximum time of 10 minutes.
- b. Select the desired override to enter on the Override screen.
- c. In the Override screen, toggle the switch and two new fields will become visible.
- d. Select the override value and length of time. A maximum time duration of 10 minutes is allowed for all overrides.
- e. Once a value and length of time have been chosen, press **Save** to set the override. The override can be changed at any time by re-entering the screen, choosing a different value, and pressing **Save**.
- f. Active overrides will be highlighted blue in the dashboard for easy identification.
- g. To cancel an active override, tap the override from the main Case tab. Turn off the green toggle switch and press **Save**.






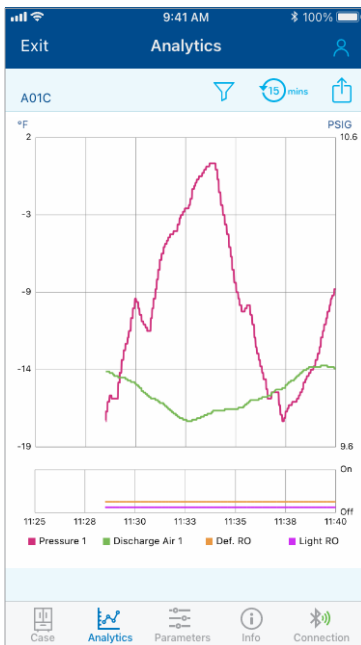
## Restart the CC200

For convenience and service there is a command to reboot the CC200. To reboot the CC200, select the Restart CC200 command from the list. A pop-up will be shown to confirm the action. The CC200 will perform a soft reboot and status information will be temporarily unavailable in the Cold Chain Connect dashboard.



## Real-Time Graphs

- Select the **Analytics**  tab at the bottom of the application.
- Select **Filter**  at the top of the application.
  - Select the desired values to graph from the list of available CC200 data points and press **Apply**. Cold Chain Connect will begin building the graph.
  - A maximum of two analog data types and two ON/OFF data types can be graphed simultaneously. Tap the graph line anywhere to see a plot marker of the value at that point in time.
- Select **15 mins** and you will be able to select three options:
  - 5 minutes
  - 10 minutes
  - 15 minutes
- Select **Share**  at the top of the application.
  - You will be prompted to share the graph.



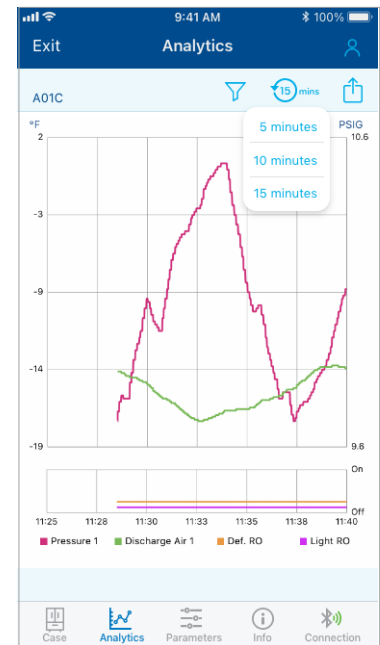
Choose up to 2 analog values to graph.

<input type="checkbox"/> Discharge Air 1	<input type="checkbox"/> Return Air 1
<input type="checkbox"/> Discharge Air 2	<input type="checkbox"/> Return Air 2
<input type="checkbox"/> Discharge Air 3	<input type="checkbox"/> Return Air 3
<input checked="" type="checkbox"/> Def Heater Amp	<input type="checkbox"/> Superheat 1
<input type="checkbox"/> Def Term 1	<input type="checkbox"/> Superheat 2
<input type="checkbox"/> Def Term 2	<input type="checkbox"/> Superheat 3
<input type="checkbox"/> Def Term 3	<input type="checkbox"/> Active Air SP
<input type="checkbox"/> Coil Out 1	<input type="checkbox"/> EEPR Position
<input type="checkbox"/> Coil Out 2	<input type="checkbox"/> EEPR Setpoint
<input type="checkbox"/> Coil Out 3	<input type="checkbox"/> EEPR Ctrl Value
<input type="checkbox"/> Fan Amp	<input type="checkbox"/> EEV 1 Position
<input type="checkbox"/> Pressure 1	<input type="checkbox"/> EEV 2 Position
<input type="checkbox"/> Pressure 2	<input type="checkbox"/> EEV 3 Position
<input type="checkbox"/> Pressure 3	<input checked="" type="checkbox"/> Superheat SP

Choose up to 2 binary values to graph.

<input checked="" type="checkbox"/> Def RO	<input type="checkbox"/> Light RO
<input checked="" type="checkbox"/> Fan RO	<input type="checkbox"/> Refrig RO

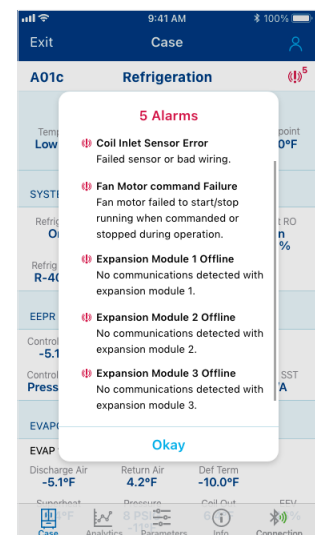
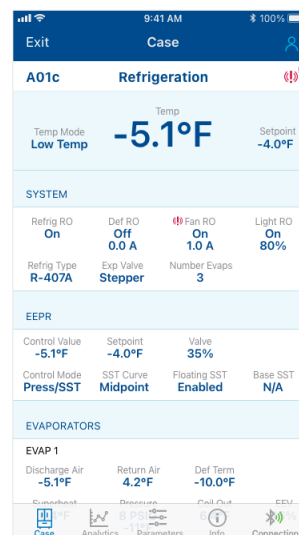
**Cancel** **Apply**




## Viewing Alarms

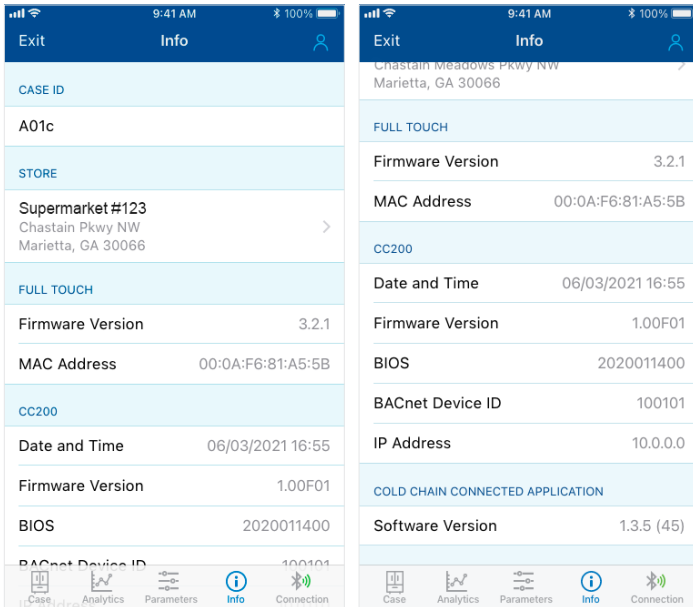
Active CC200 alarms can be viewed in the Case tab by tapping the alarm icon in the upper right corner of the Case screen. When one or more alarm conditions are active, the alarm icon will be red, if there are no active alarms the icon will be gray and the count will be zero.

An alarm icon will appear next to any piece of data in the Case tab that has an active alarm. Tap the icon next to the data point to see the description.




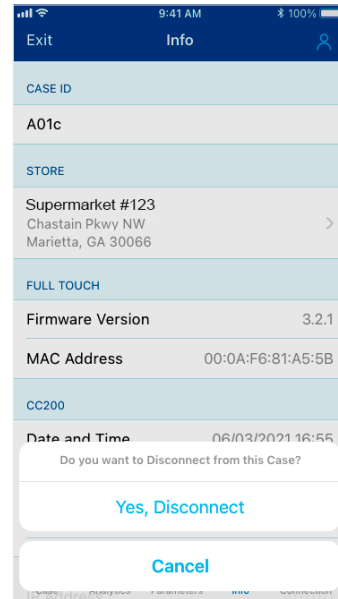
## Info

- a. Select **Info**  at the bottom of the application and you will see the Store info, CC200 version, and the Cold Chain Connect version:



## Disconnect from the Case

- a. Select **Connection**  at the bottom of the application.
- You will see a pop-up window asking you to Disconnect.
  - Select **Yes, Disconnect** and you will be disconnected from the Case.



### For Technical Support:

Call: 833-409-7505 or

Email: [ColdChain.TechnicalServices@copeland.com](mailto:ColdChain.TechnicalServices@copeland.com)

For the full user manual,  
scan the QR code:



Visit our website at [copeland.com/en-us/products/controls-monitoring-systems](https://copeland.com/en-us/products/controls-monitoring-systems) for the latest technical documentation and updates.

For Technical Support call 833-409-7505 or email [ColdChain.TechnicalServices@Copeland.com](mailto:ColdChain.TechnicalServices@Copeland.com)

026-4713 R7

The contents of this publication are presented for informational purposes only and they are not to be construed as warranties or guarantees, express or implied, regarding the products or services described herein or their use or applicability. Copeland reserves the right to modify the designs or specifications of such products at any time without notice. Responsibility for proper selection, use and maintenance of any product remains solely with the purchaser and end-user. ©2024 Copeland is a trademark of Copeland LP.

# COPELAND