

E2 Enhanced Reverse Logic on the Plug-in Digital I/O Card

Overview

The E2 Enhanced Plug-In Digital I/O Network Card (P/N 538-4880 and 537-4880) is an expansion card for the E2 Enhanced controller that adds two digital inputs and two digital outputs to the E2 processor board. These inputs and outputs function the same as points on the I/O network input and output boards, but they are controlled separately from the E2's I/O network and require no external wiring or powering to operate.

Reverse Logic of the Onboard I/O Relays

All E2 Enhanced controllers with FPGA Version 10 are affected:

- During system start-up of the E2 Enhanced controller, both relays (Digital Output 1 and Digital Output 2) are energized (ON) by default.
- When the Onboard I/O application commands the RELAY OUT 1 or RELAY OUT 2 to turn ON, the associated relay turns OFF.
- When the Onboard I/O application commands the RELAY OUT 1 or RELAY OUT 2 to turn OFF, the associated relay turns ON.

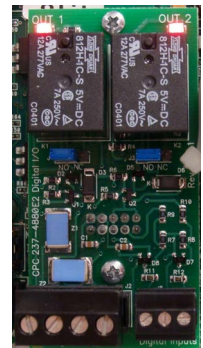


Figure 1 - Digital I/O Card

Locate Your FPGA Version

1. Press Alt+V to access the **Current Version Information** screen in the E2.
2. Verify that the E2 Enhanced circuit board **FPGA Version** is **10**.
3. Contact Copeland Technical Support at 833-409-7505 for arrangements to have the E2 Enhanced circuit board updated.

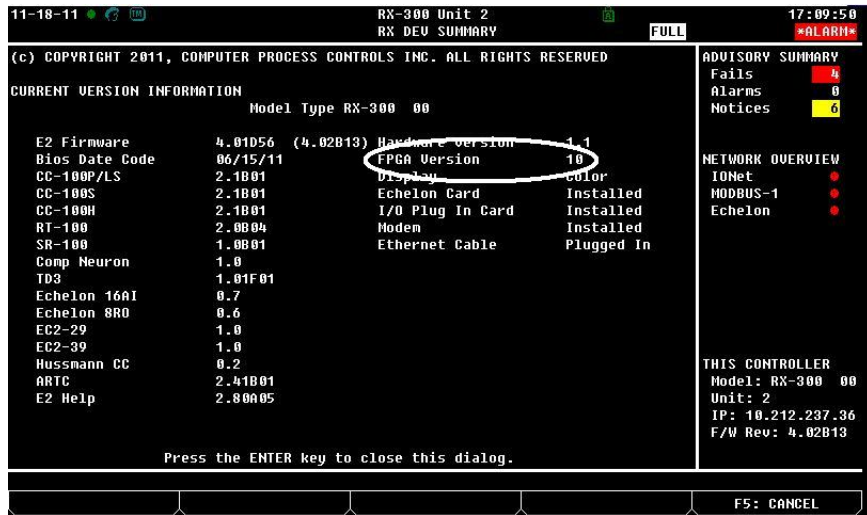


Figure 2 - Verifying the E2 E FPGA Version 10

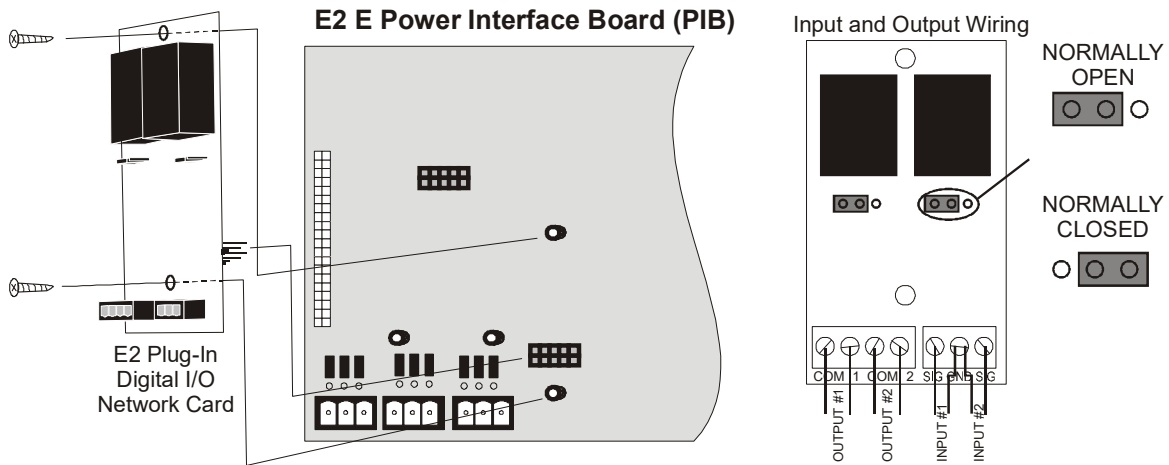


Figure 3 - Digital I/O Plug-In Layout

Visit our website at copeland.com/en-us/products/controls-monitoring-systems for the latest technical documentation and updates.
 For Technical Support call 833-409-7505 or email ColdChain.TechnicalServices@Copeland.com