

# Cargo Monitoring Solutions



Product Catalogue





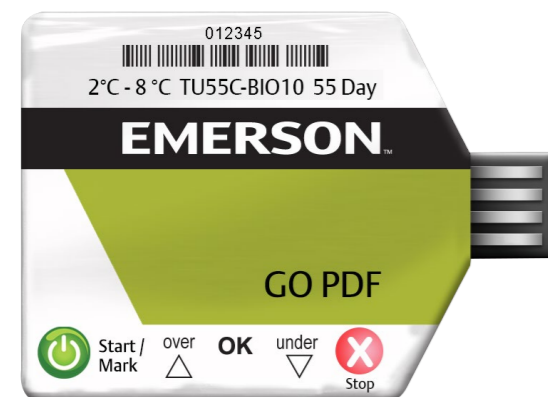
## Emerson Cargo Solutions

Modern vaccination efforts call for complete and accurate vaccine storage and in-transit monitoring solutions to support vaccine effectiveness and potency. Emerson Cargo Solutions enables improved shipment visibility with GO Trackers and Loggers. We help the pharmaceutical industry ensure the safety and efficacy of vaccines reaches its patients. Our core technologies coupled with our cold chain expertise provide complete real-time temperature and location monitoring solutions for our customers.

## GO PDF BIO Logger

Temperature monitoring logger

GO PDF Loggers are flat and feature an integrated USB connection point which can be plugged directly into the USB port of a computer. Once connected, the logger automatically generates a PDF file containing complete time and temperature history, including graphs and summary data. Suited for general monitoring of most perishable food and industrial products, GO PDF Loggers can also be optimized for monitoring vaccines, pharmaceuticals, biologics and other temperature sensitive products.



### Technical Specifications

<b>Alarm Configurations:</b>	Upper/lower/both/none, alerts are cumulative
<b>Alarm Indicators:</b>	LEDs indicate temp over/under/OK
<b>Calibration:</b>	Silicon based sensor is calibrated at the time of manufacture by Texas Instruments; NIST certificate of traceability available
<b>Certifications:</b>	FCC, CE, RCM, China RoHS, WEEE
<b>Embedded CSV File:</b>	Yes
<b>Export to Other Applications:</b>	Generates PDF with embedded CSV on PC plus NIST certificate of accuracy
<b>In-Use Life:</b>	Up to 110 days
<b>IP Rating:</b>	IP67
<b>Life Sciences Validation:</b>	Yes
<b>Marking Capabilities:</b>	Yes
<b>NIST Traceable:</b>	Yes
<b>Operating Environment:</b>	-25°C to 60°C (-13°F to 140°F)
<b>Operating System:</b>	Windows 32 bit, 64 bit
<b>Recording Interval:</b>	Every five or ten minutes
<b>Recycling Options:</b>	GO GreenSense™ Program
<b>Shelf Life:</b>	15 months
<b>Size:</b>	61 mm x 85 mm (2.4 in x 3.3 in)
<b>Stop Button:</b>	Yes
<b>Temperature Accuracy:</b>	±0.25°C typical -25°C to 60°C (-13°F to 140°F)
<b>Time Zone:</b>	UTC in logger
<b>Weight:</b>	14.2 g (0.5 oz)

## XpressPDF™ Logger

Temperature monitoring logger



XpressPDF Logger digitally monitors time and temperature of perishable products during distribution and storage. Loggers are flat and feature an integrated USB connection point which can be plugged directly into the USB port of a computer. Once connected, the logger automatically generates a PDF file containing complete time and temperature history, including graphs and summary data. XpressPDF Logger eliminates the need for reading devices and proprietary software and are optimal for applications requiring fully independent operation.

### Technical Specifications

<b>Certification:</b>	RCM, China RoHS, EN12830
<b>Embedded CSV File:</b>	Yes
<b>Export To Other Applications:</b>	Generates PDF with embedded CSV on PC
<b>In-Use Life:</b>	90 days, 110 days or 160 days
<b>Memory:</b>	25,920 data points
<b>Nist Traceable:</b>	Yes
<b>Operating Environment:</b>	-30°C to 70°C (-22°F to 158°F)
<b>IP Rating:</b>	IP67
<b>Marking Capabilities:</b>	Yes
<b>Operating System:</b>	Windows 32-bit, 64-bit
<b>Recording Interval:</b>	Every 5 minutes, 10 minutes or 15 minutes
<b>Shelf Life:</b>	15 months
<b>Size:</b>	58 mm x 36 mm x 5.4 mm (2.28 in x 1.42 in x .21 in)
<b>Start Delay:</b>	30 minutes
<b>Temperature Accuracy:</b>	Typical +/- 0.5°C
<b>Time Zone:</b>	UTC
<b>Weight:</b>	12 g (0.4 oz)



# GO NFC Logger

Time & temperature data through a mobile device



GO NFC Loggers monitor time and temperature of perishable products during distribution and storage. Loggers are flat and transfer data via short-range, near field communications (NFC) using phones and tablets. Logger data is immediately available via mobile application or using the GO NFC Pad Reader. In addition, GO NFC Loggers leverage the capabilities of Android and iOS phones and eliminate the need for proprietary readers. Data is easily sent to any email address via the mobile application.

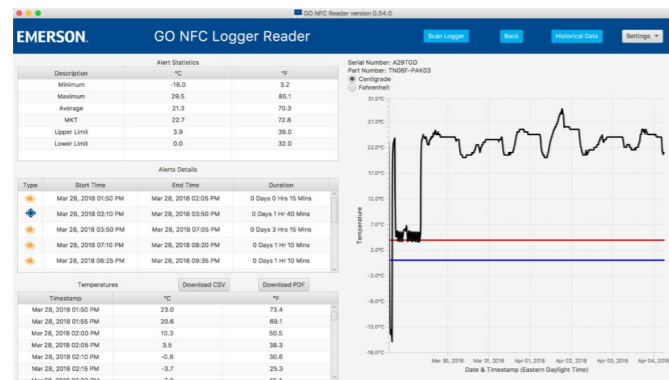
Cloud-based access customers who are interested in maintaining 24/7 historical records can subscribe to cloud upload capabilities where data can be accessed whenever needed.

## Technical Specifications

<b>Alarm Configurations:</b>	Upper/lower/both/none
<b>Alarm Indicators:</b>	LEDs indicate temp over/under/OK
<b>Certifications:</b>	FCC, CE, RCM, China RoHS, WEEE
<b>Memory:</b>	1922 hard data points
<b>Nist Traceable:</b>	Yes
<b>Operating Environment:</b>	-25°C to 60°C (-13°F to 140°F)
<b>Read Range:</b>	Up to 5.08 cm (2 in)
<b>Reading Redundancy:</b>	GO NFC Pad Reader
<b>Recycle Options:</b>	GO GreenSense™ Program
<b>In-Use Life:</b>	6 days, 15 days, 30 days, 60 days, or 90 days
<b>IP Rating:</b>	IP67
<b>Shelf Life:</b>	15 months
<b>Size:</b>	61 mm x 81 mm (2.4 in x 3.4 in)
<b>Start Delay:</b>	Standard 30 minutes, customizable
<b>Supported Readers:</b>	Android™ 4.1/ iPhone® 7 or newer with the NFC app, NFC-enabled tablets, NFC Pad Reader with software Mac and Windows compatible
<b>Temperature Accuracy:</b>	-25°C to 60°C (-13°F to 140°F): ±0.5°C (32.9°F)
<b>Temperature Resolution:</b>	0.1°C (32.2 °F)
<b>Temperature Sampling Frequency:</b>	One minute, 5 minute average record
<b>Weight:</b>	14.2 g (0.5 oz)



Scan the QR code and download the GO NFC Reader on your phone



# GO USB Logger

Reusable temperature logger with humidity and probe

The GO USB family of loggers offer a versatile solution to monitoring areas within your cold chain. With a LCD display and user configuration options, loggers are suitable for closed-loop scenarios as well as import/export applications. Depending on product model, the loggers measure ambient temperature and humidity, ambient temperature only, or ambient temperature and probe temperature. A range of useful information such as mean kinetic temperature, minimum and maximum temperatures and humidity, average temperature, alerts, and much more is presented in a secure PDF report which is generated automatically when connected to a PC.

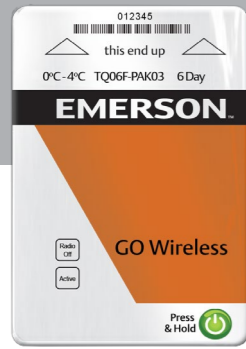
The configuration software allows users to customize the loggers to meet their cold chain measurement needs.

Data gathered and stored can be easily shared among key stakeholders. An audit trail is also generated within the PDF report with time stamps showing marked events and handling of the logger.



## Technical Specifications

	GO USB Temp (T1XD)	GO USB Humidity (TH1XD)	GO USB Probe (TP1XD)
<b>Alerts:</b>	Yes (user configurable)	Yes (user configurable)	Yes (user configurable)
<b>Battery Life:</b>	12-24 months (configuration dependent)	12-24 months (configuration dependent)	12-24 months (configuration dependent)
<b>Certifications:</b>	FCC, CE, RCM, EN12830	FCC, CE, RCM, EN12830	FCC, CE, RCM, EN12830
<b>Configuration Software:</b>	Yes	Yes	Yes
<b>Humidity Accuracy:</b>	N/A	At 25°C, between 0% and 95% RH: ±5%	N/A
<b>IP Rating (With Cap &amp; Plug):</b>	IP54	IP30	IP54
<b>LED:</b>	Green = On, Red = Alert	Green = On, Red = Alert	Green = On, Red = Alert
<b>LCD Information:</b>	Current temperature, Min/Max temperature, Avg temperature, MKT, Alert event, Battery level, Configured time (current or running total time)	Current temperature, Current humidity, Min/Max temperature, Min/Max humidity, MKT, Alert event, Battery level, Configured time (current or running total time)	Current temperature (ambient and probe), Min/Max temperature (ambient and probe), MKT & Avg (ambient and probe), Alert event, Battery level, Configured time (current or running total time)
<b>Memory Data Points:</b>	32,000 ambient temperature	16,000 ambient temperature / 16,000 humidity	16,000 ambient temperature / 16,000 probe
<b>Operating Environment:</b>	-30°C to +70°C (-22°F to +158°F)	-30°C to +70°C (-22°F to +158°F)	-30°C to +70°C (-22°F to +158°F)
<b>Operating System:</b>	Professional Versions of Vista, Windows 7, Windows 8, Windows 10, Adobe Reader SW (version 9 or later)	Professional Versions of Vista, Windows 7, Windows 8, Windows 10, Adobe Reader SW (version 9 or later)	Professional Versions of Vista, Windows 7, Windows 8, Windows 10, Adobe Reader SW (version 9 or later)
<b>Probe:</b>	N/A	N/A	1.5 m (4.9 ft) Weight 15 g (0.53 oz)
<b>Probe Measurement Range:</b>	N/A	N/A	-80°C to +70°C (-112°F to +158°F)
<b>Replaceable Battery:</b>	½ size AA (3.6V Lithium)	½ size AA (3.6V Lithium)	½ size AA (3.6V Lithium)
<b>Resolution:</b>	0.1°C (0.18°F)	0.1°C (0.18°F)	0.1°C (0.18°F)
<b>Shelf-Life:</b>	12 months	12 months	12 months
<b>Size:</b>	108 mm x 48 mm x 19 mm (4.25 in x 1.89 in x 0.74 in)	108 mm x 48 mm x 19 mm (4.25 in x 1.89 in x 0.74 in)	108 mm x 48 mm x 19 mm (4.25 in x 1.89 in x 0.74 in)
<b>Sound Alert (Buzzer):</b>	Yes (user configurable)	Yes (user configurable)	Yes (user configurable)
<b>Temperature Accuracy (Ambient):</b>	Typical: ±0.5°C (±0.9°F) between -20°C and +60°C (-4°F and 158°F) ±0.7°C (±1.4°F) other	Typical: ±0.5°C (±0.9°F) between -20°C and +60°C (-4°F and 158°F) ±0.7°C (±1.4°F) other	Typical: ±0.5°C (±0.9°F) between -20°C and +60°C (-4°F and 158°F) ±0.7°C (±1.4°F) other
<b>Temperature Accuracy (Probe):</b>	N/A	N/A	Typical: ±1.5°C (±2.7°F) between -80°C to -30°C (-112°F to -22°F ±2°C (±3.7°F) other
<b>Weight:</b>	52 g (1.83 oz)	52 g (1.83 oz)	52 g (1.83 oz)



# AutoSense™ Inbound

A complete automatic wireless temperature monitoring system

Inbound monitoring is self-contained, utilizes cellular networks, and does not require IT departments to oversee installation or ongoing maintenance. GO Wireless Loggers arrive at the location and are automatically uploaded by the readers. Temperature data is sent via a cellular modem to a cloud repository where text email alerts are created and delivered to predefined individuals.

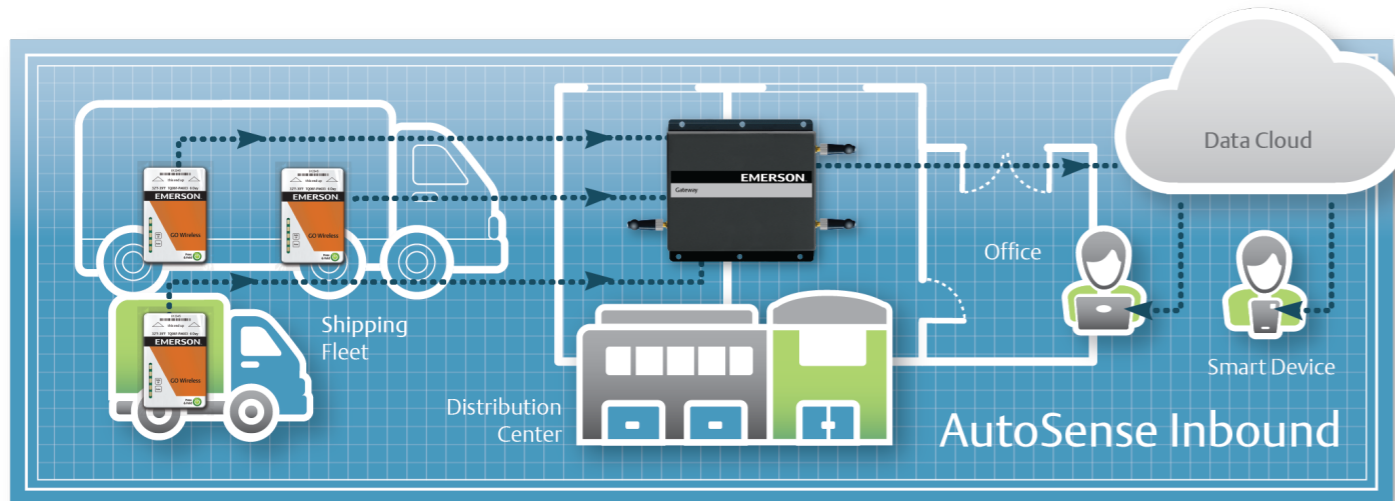
## Technical Specifications

### Go Wireless Logger

<b>Alarm Configurations:</b>	Upper/lower/both/none (consecutive)
<b>Calibration:</b>	Silicon based sensor is calibrated at the time of manufacture by Texas Instruments; NIST certificate of traceability available
<b>Frequency:</b>	US 915 MHz or EU 868 MHz
<b>In-Use Life:</b>	Up to 30 days, more in-use life with hibernation
<b>Memory:</b>	1922 hard data points
<b>Read Range:</b>	91 meters (300 feet)
<b>Shelf Life:</b>	12 months, Frozen SKU: 8 months
<b>Size:</b>	60 mm x 84 mm (2.4 in x 3.3 in)
<b>Start Delay:</b>	Standard 30 minutes, customizable
<b>Temperature Accuracy:</b>	+/- 0.5 typical between -20°C to 60°C (-4°F to 140°F)
<b>Temperature Resolution:</b>	0.1°C
<b>Temperature Sampling Frequency:</b>	One minute, five minute average record
<b>Weight:</b>	17 g (0.6 oz)

### Reader Specifications

<b>Frequency:</b>	US 915 MHz or EU 868 MHz
<b>Indicators:</b>	3-color LEDs showing system status and signal strength
<b>Internet Connectivity:</b>	Can utilize existing 802.11 WiFi or hardwire Ethernet connection at customer request; US 2.4Ghz ISM WiFi frequency band; multiband security mixed WPA/WPA2-PSK; FCC, IC, CE, RCM, WEB, WWAN 4G/3G/2G
<b>Power:</b>	110VAC
<b>Read Range:</b>	91 meters (300 feet)
<b>Installation &amp; Remote Maintenance:</b>	Performed by Emerson



# GO Bluetooth Plus Logger

Time, temperature, humidity and probe read with a mobile device



GO Bluetooth Loggers monitor time, temperature, humidity, and pulp temperature of perishable products in pre-cooling scenarios and during transit. Data is transferred wirelessly to most Bluetooth-enabled Android and iOS phones and tablets via the GO BT Reader mobile app. Data is received up to 30 meters away, eliminating the need for proprietary readers and software. For ease of use, the mobile application displays temperature and humidity data in a single graph.

The optional probe provides a wider temperature operating range and enables users to take both internal and external temperature readings. Loggers sample temperature every five minutes and both the temperature sensor and associated probe are NIST traceable.

### GO Bluetooth Probe:

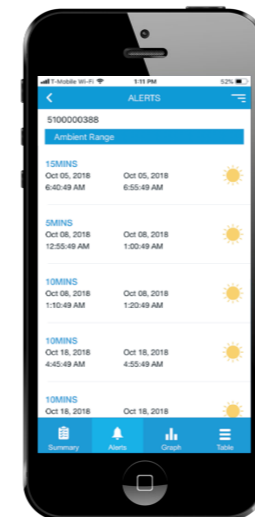
<b>Cable Length:</b>	1.5 m (5 ft) cable connection/ 3.5 mm (0.14 in) plug/weight 22.7 g (0.8 oz)
<b>Diameter:</b>	#PR1, 6 mm (0.24 in) #PR3, 3 mm (0.12 in)
<b>Probe Length:</b>	#PR1, 57 mm (2.25 in) #PR3, 150 mm (5.9 in)
<b>Probe Sensor Operating Environment:</b>	-50°C to 150°C (-58°F to 302°F)
<b>Temperature Accuracy:</b>	+/- 0.125°C typical at 25°C (+/- 0.225°F typical at 77°F) +/- 0.625°C max -50 to 150°C (+/- 1.125°F max -58°F to 302°F)



## Technical Specifications

### Device:

<b>Alarm Configurations:</b>	Programmable via GO BT Reader mobile application
<b>Calibration:</b>	Silicon based sensor is calibrated at the time of manufacture by Texas Instruments
<b>Certifications:</b>	FCC, IC, CE, RCM, NOM, Anatel, SRRC, RoHS, WEEE, DID, QQB, Bluetooth 4.0
<b>Export To Other Applications:</b>	Generates PDF or CSV
<b>IP Rating:</b>	IP30
<b>In-Use Life:</b>	Up to 180 days
<b>Memory:</b>	130,000 data points
<b>Humidity Accuracy:</b>	At 25°C, between 20%RH and 80%RH: ±5%RH
<b>Mobile Applications:</b>	GO BT Reader (available from Google Play, Apple Store, Baidu Store, company web site or QR code on logger)
<b>Nist Traceable:</b>	Yes
<b>Operating Range:</b>	Unit Sensor: -30°C to 60°C (-22°F to 140°F)
<b>Operating Relative Humidity:</b>	0 to 100% RH
<b>Read Range:</b>	Up to 30 meters (100 feet)
<b>Sampling Interval:</b>	5 minutes
<b>Shelf Life:</b>	15 months
<b>Size:</b>	68 mm x 39 mm x 13 mm (2.68 in x 1.54 in x 0.51 in)
<b>Supported Readers:</b>	iOS 9 and above, Android 4.3 and above, BT4.0 and above
<b>Temperature Accuracy:</b>	+/-0.5°C (Maximum) from 0°C to +65°C +/-1.0°C (Maximum) from -40°C to +125°C +/- 0.9°F (Maximum) from 32°F to 149°F +/-1.8°F (Maximum) from -40°F to 32°F and 149°F to 275°F
<b>Weight:</b>	34 g (1.2 oz)



Scan the QR code and download the GO Bluetooth Plus Logger Reader on your phone



# GO Real-Time 4G/5G Tracker

Temperature, location and security with dual-mode 4G/5G coverage

Keeping track of shipments has never been easier with the GO Real-Time 4G/5G Tracker. Using cellular technology, trackers provide temperature and location alerts as your shipment moves through the supply chain. And now, with our 4G/5G cellular technology, connectivity and access to your data is further enhanced. Rest assured that visibility to temperature, humidity, and location data will be available despite the ongoing transition in the cellular technology industry.

## Technical Specifications

<b>Battery:</b>	UN38.3 Compliant	<b>Oversight Dashboard:</b>	Emerson.com/Oversight
<b>Cellular:</b>	CAT M1/NB1: B1/B2/B3/B4/B5/B8/B12/B13/B18/B19/B20/B26/B28 EGPRS: 850/900/1800/1900MHz	<b>Shelf Life:</b>	Shipped with a minimum in-use and shelf life of approximately 6 months. Please check the "Activate By Date" on the product box and follow a first-in-first-out process.
<b>Certifications:</b>	FCC, IC, CE, PTCRB, RCM, IFETEL, RTCA/DO-160G Compliant	<b>Size:</b>	76 mm x 51 mm x 19 mm (3.0 in x 2.0 in x 0.75 in)
<b>Device Storage:</b>	Optimal: Below 20°C and 60% RH	<b>Temperature Range:</b>	-20°C to 60°C (-4°F to 140°F) operating environment
<b>Humidity Accuracy:</b>	At 25°C, between 20% RH and 80% RH: ±10% RH	<b>Temperature Accuracy:</b>	±0.5°C (0.9°F) typical between -20°C to 60°C (-4°F to 140°F)
<b>Humidity Range:</b>	20% to 95% operation typical	<b>Weight:</b>	68 g (0.15 lbs)
<b>In-Use Life:</b>	Tri-mode with up to 20 days of operation, 6-minute measurements reported at 18-minute intervals		
<b>IP Rating:</b>	IP44		
<b>Light Sensor Sensitivity:</b>	±0.5 Lux, minimum detectable 1.0 Lux		



EMERSON™

GO Real-Time XL 4G/5G



# GO Real-Time XL 4G/5G Tracker

Temperature, location and security with dual-mode 4G/5G coverage

Extended battery life provides full coverage for your products on the road, in the port and out on the water. When your ship leaves port, the GO Real-Time XL 4G/5G Tracker keeps track of the temperature and humidity. Every time the ship nears port, the unit automatically connects and uploads data before the ship reaches the docks. And now, with our tri-mode 4G/5G cellular technology, connectivity and access to your data is further enhanced. Rest assured that visibility to temperature and location data will be available despite the ongoing transition in the cellular technology industry. The GO Real-Time XL 4G/5G Tracker senses light when doors are opened and alerts you when your products are at risk on the road.

## Technical Specifications

<b>Battery:</b>	UN38.3 Compliant	<b>Oversight Dashboard:</b>	Emerson.com/Oversight
<b>Cellular:</b>	CAT M1/NB1: B1/B2/B3/B4/B5/B8/B12/B13/B18/B19/B20/B26/B28 EGPRS: 850/900/1800/1900MHz	<b>Shelf Life:</b>	Shipped with a minimum in-use and shelf life of approximately 6 months. Please check the "Activate By Date" on the product box and follow a first-in-first out process.
<b>Certifications:</b>	FCC, IC, CE, PTCRB, RCM, IFETEL, KCC, RTCA/DO-160G Compliant	<b>Size:</b>	76 mm x 51 mm x 19 mm (3.0 in x 2.0 in x 0.75 in)
<b>Device Storage:</b>	Optimal: Below 20°C and 60% RH	<b>Temperature Range:</b>	-20°C to 60°C (-4°F to 140°F) operating environment
<b>Humidity Accuracy:</b>	At 25°C, between 20% RH and 80% RH: ±10% RH	<b>Temperature Accuracy:</b>	±0.5°C (0.9°F) typical between -20°C to 60°C (-4°F to 140°F)
<b>Humidity Range:</b>	20% to 95% operation typical	<b>Weight:</b>	68 g (0.15 lbs)
<b>In-Use Life:</b>	Tri-mode with up to 60 days of operation, 10-minute measurements reported at 60-minute intervals		
<b>IP Rating:</b>	IP44		
<b>Light Sensor Sensitivity:</b>	±0.5 Lux, minimum detectable 1.0 Lux		

# GO Real-Time Reusable 4G/5G Tracker

Temperature, location and security dual-mode 4G/5G coverage

GO Real-Time Reusable 4G/5G Tracker is a temperature monitoring solution that does not require fixed installation or hardware maintenance, with continuous coverage for your products over the road. The reusable solution is designed for customers who would like to reuse the same tracker on multiple shipments. With our 4G/5G cellular technology and ability to recharge, access to your data is further enhanced. The GO Real-Time Reusable 4G/5G Tracker senses light when doors are opened and alerts you when your products are at risk on the road.

## Technical Specifications

<b>Battery:</b>	UN38.3 Compliant	<b>Light Sensor Sensitivity:</b>	±0.5 Lux, minimum detectable 1.0 Lux
<b>Cellular:</b>	CAT M1/NB1: B1/B2/B3/B4/B5/B8/B12/B13/B18/B19/B20/B26/B28 EGPRS: 850/900/1800/1900MHz	<b>Oversight Dashboard:</b>	Emerson.com/Oversight
<b>Certifications:</b>	FCC, IC, CE, PTCRB, RCM, IFETEL, RTCA/DO-160G Compliant	<b>Shelf Life:</b>	Shipped with a minimum in-use and shelf life of approximately 6 months. Please check the "Activate By Date" on the product box and follow a first-in-first out process.
<b>Device Storage:</b>	Optimal: Below 20°C and 60% RH	<b>Size:</b>	78 mm x 52 mm x 33 mm (3.07 in x 2.06 in x 1.31 in)
<b>Humidity Accuracy:</b>	At 25°C, between 20% RH and 80% RH: ±10% RH	<b>Temperature Range:</b>	-20°C to 60°C (-4°F to 140°F) operating environment
<b>Humidity Range:</b>	20% to 95% operation typical	<b>Temperature Accuracy:</b>	±0.5°C (0.9°F) typical between -20°C to 60°C (-4°F to 140°F)
<b>In-Use Life:</b>	Tri-mode with up to 60 days of operation, 10-minute measurements reported at 60-minute intervals	<b>Weight:</b>	136 g (0.30 lbs)
<b>IP Rating:</b>	IP44		





# GO Real-Time 4G/5G Global Tracker

Temperature, humidity, location and security using cellular M2M technology



Tracking your shipments with GO Real-Time 4G/5G Global Trackers simplifies and strengthens your cold chain by providing up to date temperature and location alerts. And now, strengthened with our tri-mode 5G cellular technology (CATM/NB1oT/GSM), connectivity and access to your data is further enhanced. Rest assured that visibility to temperature, humidity, and location data will be available despite the ongoing transition in the cellular technology industry. For enhanced functionality, GO Real-Time 4G/5G Global Trackers offer external probes for pulp temperature or dry ice applications. The tracker is also available in a reusable model for customers who would like to reuse the same tracker on multiple shipments.

## Technical Specifications

<b>Battery:</b>	UN38.3 Compliant	<b>Light Sensor Sensitivity:</b>	±0.5 Lux, minimum detectable 1.0 Lux
<b>Cellular:</b>	CAT M1/NB1: B1/B2/B3/B4/ B5/B8/B12/ B13/B18/B19/ B20/B26/B28/B39 EGPRS: 850/900/1800/1900MHz	<b>Oversight Dashboard:</b>	Emerson.com/Oversight
<b>Certifications:</b>	FCC, PTCRB, CE, IC	<b>Probe:</b>	<b>Optional</b> (-200°C to 100°C operating)
<b>Device Storage:</b>	Optimal: Below 20°C and 60% RH	<b>Shelf Life:</b>	Shipped with a minimum in-use and shelf life of approximately 6 months. Please check the "Activate By Date" on the product box and follow a first-in-first out process.
<b>Humidity Accuracy:</b>	At 25°C, between 20% RH and 80% RH: ±5% RH	<b>Size:</b>	73 mm x 95 mm x 25 mm (2.9 in x 3.8 in x 1.0 in)
<b>Humidity Range:</b>	20% to 95% operation typical	<b>Temperature Range:</b>	-20° C to 60° C (-4° F to 140° F) operating environment
<b>In-Use Life:</b>	Tri-mode with up to 20 days of operation, 6-minute measurements reported at 18-minute intervals	<b>Temperature Accuracy:</b>	0.9°F (±0.5°C) typical between -20°C to 60°C (-4°F to 140°F)
<b>IP Rating:</b>	IP62	<b>Weight:</b>	91 g (0.2 lbs)

# GO Real-Time 4G/5G Global Plus Tracker

Temperature, humidity, location and security using cellular M2M technology



Extended battery life provides full coverage for your products on the road, in the port and out on the water. When your ship leaves port, the GO Real-Time 4G/5G Global Plus Tracker keeps track of the temperature and humidity. Every time the ship nears port, the unit automatically connects and uploads data before the ship reaches the docks. The GO Real-Time 4G/5G Global Plus Tracker senses light when doors are opened and alerts you when your products are at risk. And now, with our tri-mode 5G cellular technology (CATM/NB1oT/GSM), connectivity and access to your data is further enhanced. Rest assured that visibility to temperature and location data will be available despite the ongoing transition in the cellular technology industry. For enhanced functionality, GO Real-Time 4G/5G Global Plus Tracker offer external probes for pulp temperature or dry ice applications. The tracker is also available in a reusable model for customers who would like to reuse the same tracker on multiple shipments with up to 90 days of operation.

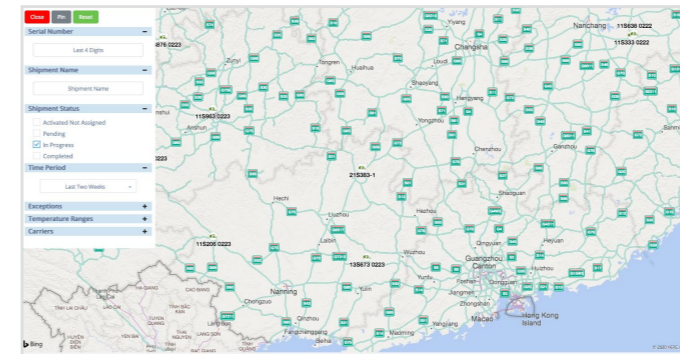
## Technical Specifications

<b>Battery:</b>	UN38.3 Compliant	<b>Oversight Dashboard:</b>	Emerson.com/Oversight
<b>Cellular:</b>	CAT M1/NB1: B1/B2/B3/B4/ B5/B8/B12/B13/ B18/B19/ B20/B26/B28/B39 EGPRS: 850/900/1800/1900MHz	<b>Probe:</b>	<b>Optional</b> (-200°C to 100°C operating)
<b>Certifications:</b>	FCC, PTCRB, CE, IC	<b>Shelf Life:</b>	Shipped with a minimum in-use and shelf life of approximately 6 months. Please check the "Activate By Date" on the product box and follow a first-in-first out process.
<b>Device Storage:</b>	Optimal: Below 20°C and 60% RH	<b>Size:</b>	83 mm x 124 mm x 53 mm (3.2 in x 4.9 in x 2.1 in)
<b>Humidity Accuracy:</b>	At 25°C, between 20% RH and 80% RH: ±5% RH	<b>Temperature Range:</b>	-20° C to 60° C (-4° F to 140° F) operating environment
<b>Humidity Range:</b>	20% to 95% operation typical	<b>Temperature Accuracy:</b>	0.9°F (±0.5°C) typical between -20°C to 60°C (-4°F to 140°F)
<b>In-Use Life:</b>	<b>Tri-mode with up to 90 days of operation,</b> 60-minute measurements reported at 60-minute intervals	<b>Weight:</b>	363 g (0.8 lbs)
<b>IP Rating:</b>	IP32		
<b>Light Sensor Sensitivity:</b>	±0.5 Lux, minimum detectable 1.0 Lux		

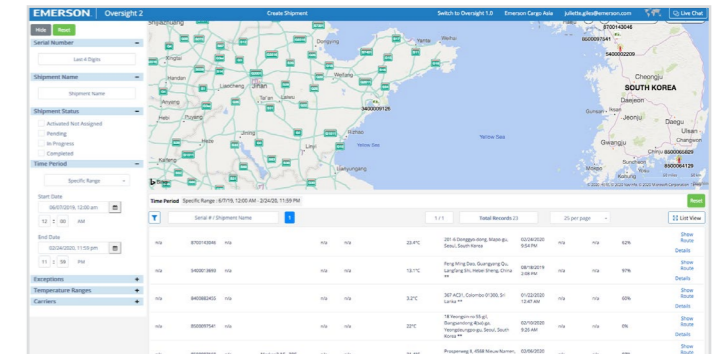
# Oversight Software and Services

## Oversight Dashboard

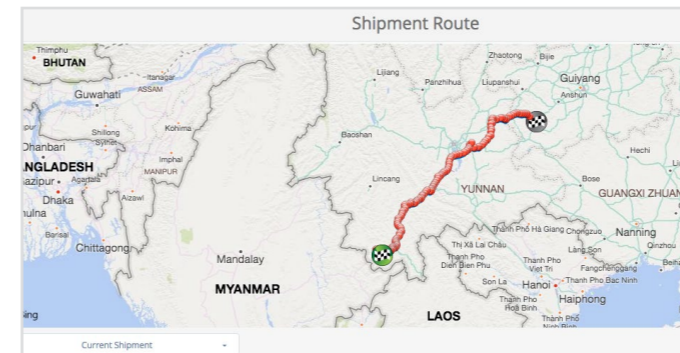
Comprehensive and automated reporting is provided through the Oversight Dashboard. Visit Emerson.com/Oversight and enter the GO Real-Time Tracker serial number. Access real-time information about your shipment or login to your secure web portal and see all of your shipments at a glance.



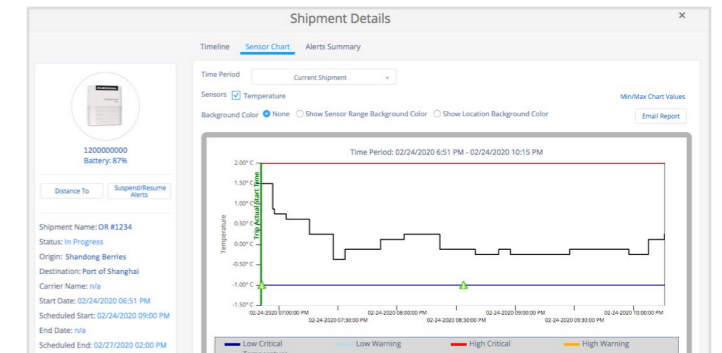
Oversight Map View



Oversight Shipment View



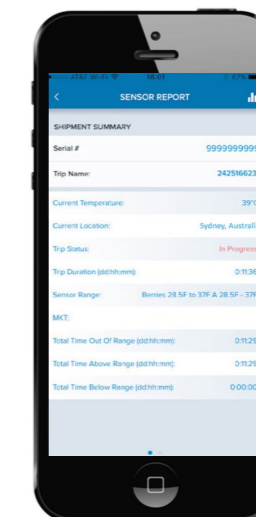
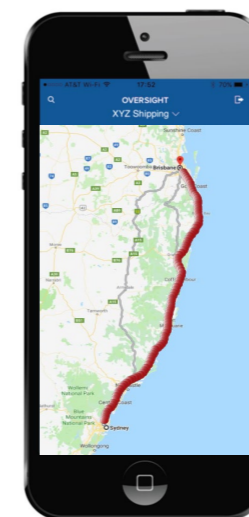
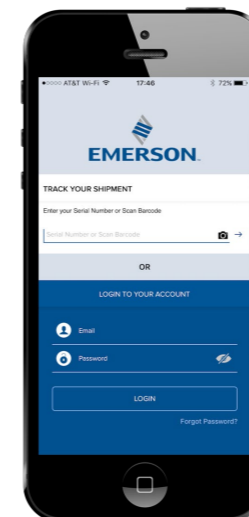
Oversight Shipment Route



Oversight Shipment Details

## Oversight Mobile

Oversight mobile enables you to view critical shipment details including temperature and location in real-time, direct from your smartphone. GO Real-Time Tracker are placed on perishable shipments and communicate data via cellular connectivity. Simply open the Oversight Mobile app to view data or set up alerts to be sent directly to your smartphone. Available on Android and iOS devices.



Scan the QR code and download Oversight on your phone





## Oversight Cargo Services

### Track Your Shipment

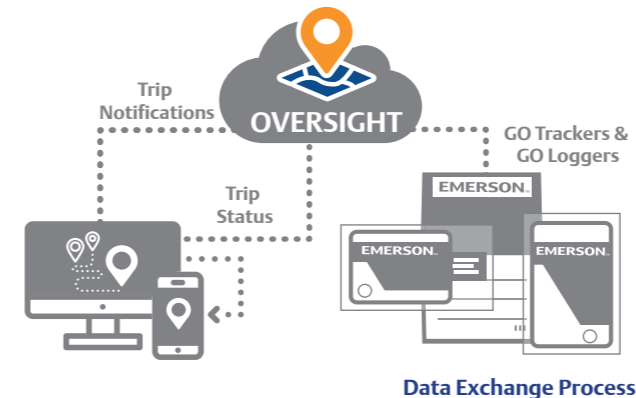
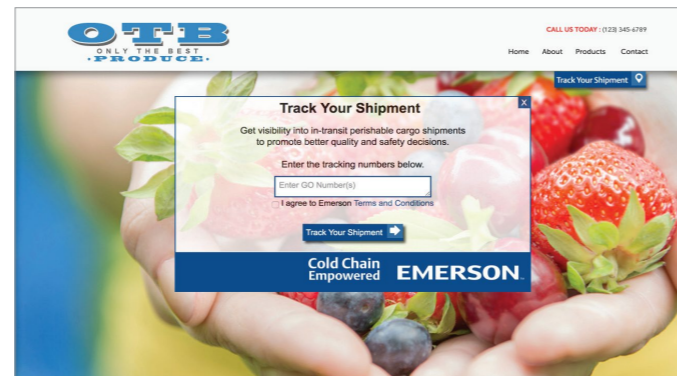
Provide customers and employees direct access to track real-time critical shipments

Designed with growers and producers in mind, the Track Your Shipment module provides quick and easy access to real-time in-transit, perishable shipment data. Our website widget can be easily embedded on the homepage of your website for easy customer access. Or, the widget can be placed on your internal intranet enabling employees to do quick order and quality tracking.

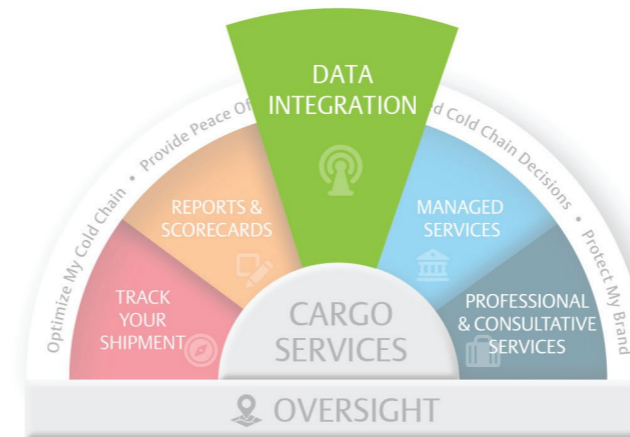
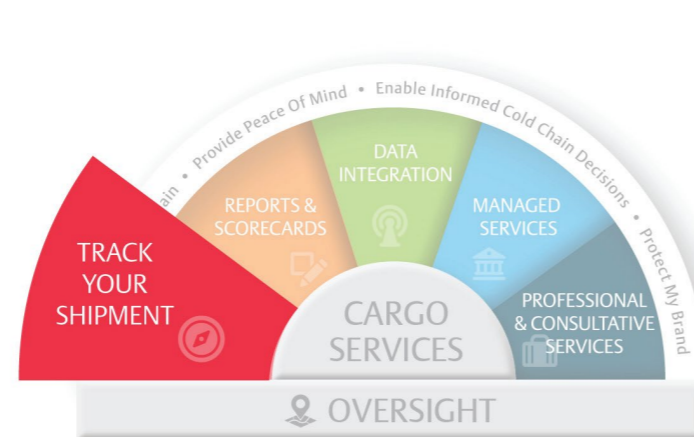
The interface allows users to simply input a GO Real Time Tracker serial number to gain visibility to location and temperature data. Choose from five color options to customize the user experience to your website and brand standards.

#### Benefits

- No cost and convenient method to track perishable shipments and obtain visibility to shipment and temperature data
- Improve operational efficiency, enhance transparency and promote food quality and safety
- Match design to fit existing branding, customize the experience and elevate your brand



Data Exchange Process



### Data Integration

Consolidate and automate data streams of shipment information into the platform of your choice

Consolidating data streams of shipment information and scores of temperature monitoring data can drastically improve the efficiency of your operation. We provide seamless in-transit cold chain data integration for those seeking to consolidate shipment data into existing software platforms.

- Eliminate disparate platforms, siloed data streams and countless logins
- Reduce duplicate work by streamlining shipment creation and processes into one system
- Receive shipment updates, temperature and sensor alerts in a single view

All while enjoying the robust cold chain data provided by Oversight, our cloudbased temperature monitoring portal.

#### Benefits

- Automate create shipment process and receive logger or tracker data seamlessly
- Seek to lessen overhead costs and utilize staff for other priority responsibilities
- Simplify your operation and consolidate in-transit cold chain data

# Contact Lists

## Asia Pacific Headquarters

Suite 2503-10A, 25/F, Exchange Tower,  
33 Wang Chiu Road, Kowloon Bay,  
Kowloon, Hong Kong  
Tel: (852) 2866 3108  
Fax: (852) 2520 6227

## Australia

356 Chisholm Road  
Auburn NSW 2144, Australia  
Tel: (612) 9795 2800  
Fax: (612) 9738 1699

## China - Beijing

Room 1203-1205,  
North Wing Junefield Plaza Central Tower,  
No. 10 Xuan Wu Men Wai Street,  
XiCheng District, Beijing, PRC  
Tel: (8610) 5095 2188

## China - Guangzhou

Guangzhou Office  
Unit 2202B, 22/F, Leatop Plaza,  
32 Zhujiang East Road, Tianhe Dist.,  
Guangzhou 510623, PRC  
Tel: (8620) 8595 5188

## China - Shanghai

Shanghai Sales Office  
7/F, Emerson Building, 1582 Gumei  
Rd, Shanghai, PRC  
Tel: (8621) 3338 7333

## India - Mumbai

601-602, 6/F Delphi B-Wing,  
Central Avenue,  
Hiranandani Business Park,  
Powai, Mumbai 400076, India  
Tel: (9122) 6786 0793  
Fax: (9122) 6662 050

## India - Pune

Plot No. 23, Rajiv Gandhi Infotech Park,  
Phase - II, Hinjewadi,  
Pune 411 057, Maharashtra, India  
Tel: (9120) 4200 2000  
Fax: (9120) 4200 2099

## Indonesia

23/F North Tower,  
Sampoerna Strategic Square-  
Jl. Jend. Sudirman Kav. 45-46,  
12930, Jakarta Indonesia  
Tel: (6221) 2509 1400,  
(6221) 5793 1000  
Fax: (6221) 5793 0883

## Japan

No. 3-9-5 Shin-Yokohama,  
Shin-yokohama Tosho Building,  
Kohoku-ku, Yokohama,  
222-0033 Japan  
Tel: (8145) 475 6371  
Fax: (8145) 475 3565

## Malaysia

No. 1, Block A  
Jalan SS13/5 Subang Jaya  
Selangor 47500, Malaysia  
Tel: (603) 5624 2888

## Middle East & Africa

PO Box 26382  
Jebel Ali Free Zone - South  
Dubai, UAE  
Tel: (9714) 811 8100  
Fax: (9714) 886 5465

## Philippines

10/F SM Cyber West Avenue,  
EDSA cor. West Avenue,  
Barangay Bungad, Diliman,  
Quezon City 1105, Philippines  
Tel: (632) 689 7200 ext. 4395

## Saudi Arabia

PO Box 34332  
3620 Building 7874, Unit 1,  
67th street 2nd Industrial City  
Dammam, Saudi Arabia  
Toll Free: 800 844 3426  
Tel: (966) 3814 7560  
Fax: (966) 3814 7570

## South Korea

5/F, NIA Building,  
Cheonggyecheon-ro,  
Jung-gu 04520, Seoul Korea  
Tel: (822) 3483 1500  
Fax: (822) 592 7883

## Taiwan

3/F, No. 122 Lane 235,  
Pao Chiau Rd., XinDianv Dist.,  
New Taipei City 23145, Taiwan (R.O.C.)  
Tel: (8862) 8912 1360  
Fax: (8862) 8912 1890

## Thailand

34/F, Interlink Tower,  
1558/133, Bangna Tai,  
Bangkok 10260, Thailand  
Tel: (662) 716 4700  
Fax: (662) 751 4241

## United Arab Emirates

PO Box 26382  
Jebel Ali Free Zone  
Dubai, UAE  
Toll Free: 800 441 3428  
Tel: (971) 4811 8100  
Fax: (971) 4886 5465

## Vietnam

6/F, Melinh Point Tower,  
2 Ngo Due Ke, District 1,  
Ho Chi Minh City, Vietnam  
Tel: (84) 908 009 189

Technical Support is available 24 hours a day, 7 days a week.

Toll Free: +1-877-998-7299 | Direct: +1-877-832-07200 | Email: [CargoAsia@Emerson.com](mailto:CargoAsia@Emerson.com)

## Emerson.com

Asia 03 00 Issued 10/2021 Emerson is a trademark of Emerson Electric Co. or one of its affiliated companies.  
©2021 Emerson Electric Co. All rights reserved.

Scan to visit:



Emerson Asia



Cargo Solutions



@EmersonComResAP