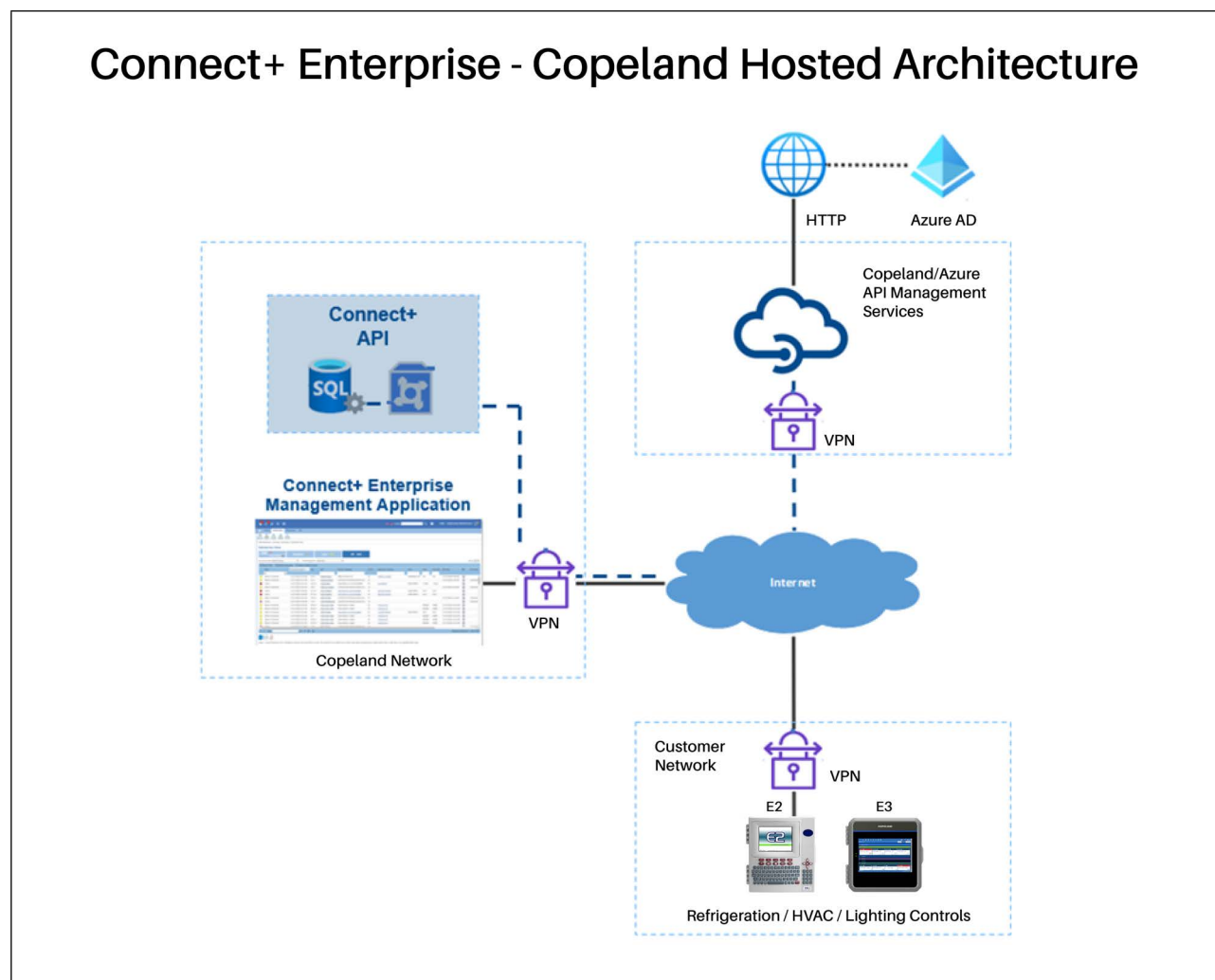


Connect+

API Documentation April 2023

Connect+ API Overview

The Connect+ API is organized around REST. Our API accepts form-encoded request bodies, returns JSON-encoded responses, and uses standard HTTP response codes, authentication, and verbs.



Controller Support

CONTROLLER	REAL TIME DATA	RETRIEVE LOG	WRITE-TO
E2 (3.08F03 and later)	Yes	Yes	Yes
E2E (4.08F03 and later)			
E3 (2.16F02 and later)	Yes	Yes	Yes
Site Supervisor (2.12F02 and later)	Yes	Yes	Yes
EVO	No	No	No
Danfoss	No	No	No

Getting Started

The API Developer will need to register and be invited into the Copeland API developer portal. Contact your Copeland Sales representative or Customer Success ColdChainCustomerSuccess@Copeland.com to begin this process.

An additional requirement is that you have a hosted instance of Connect+ fully licensed and supported.

The Following REST APIs Currently Available

The following REST APIs are currently available. Contact your Copeland Sales representative to activate the links below:

[Home - Copeland API developer portal](#) Once you are enrolled with a subscription, you can view the full details and documentation and run some test calls on our sandbox environment.

[ComRes_DSCC_Advisory_API-v1](#) Get case controller advisories from all sites that users have permission to access and pageable historical advisories for multiple sites.

GET Case Controller Advisories

GET Historical Advisories

[ComRes_DSCC_CaseController_API-v1](#) Internal Only - Gets the time spent with sensor above the setpoint or below the setpoint, as well as the total time spent out of setpoint boundaries. Only those sites that have case controllers will be returned in the result - sites that do not have case controllers will be omitted. Gets the percentage of time and total time spend above or below setpoints. Only those sites that have case controllers will be returned in the result - sites that do not have case controllers will be omitted. Gets a unified view of time spent with sensor above the setpoint or below the setpoint and the time of time spent above or below the setpoint, as well as the total time spent out of bounds. Additionally, if requested, this response also returns details about each point used in the above calculations.

GET Case Controller Downtime

GET Case Controller Performance

GET Case Controller Status

[ComRes_DSCC_Demand_Response_API-v1](#) Post an asynchronized shed command and get command status.

GET Shed Command

POST Shed Command

[ComRes_DSCC_Demand_Bump_API-v1](#) Changes/Writes or "bumps" point or setpoint value of the controller overwriting its previous value for a specified duration.

GET Devices

GET Point Values

POST Setpoint Bump

[ComRes_DSCC_Domain_API-v1](#) Gets a description of all categories, including the name and all associated device types, including details and real time points values by Category and Site ID.

GET Categories

GET Point Values

[ComRes_DSCC_Inventory_API-v1](#) Gets all Devices or a requested site, points for a given device or Sites for which the user has permission to view.

GET Devices

GET Points

GET Sites

[ComRes_DSCC_Log_API-v1](#) Gets log data for given points from system database, presuming log data has been periodically retrieved. A maximum of 24 hours of log data can be retrieved in one request, or 30 days for a single point.

GET Log Group by Site

GET Logs by Point

GET Logs by Point Type and Site

GET Logs on Demand

POST Point Log Config

[ComRes_DSCC_Point_API-v1](#) Get and Post Point value change operations, which could change a list of points for a single site, or only a single point. Supports modify parameters and override input or output.

POST Batch Change Point Value

POST Modify Point Value

GET Point Values

[ComRes_DSCC_User_API-v1](#) Allows users to authenticate themselves to OAuth server to retrieve bearer token.

POST Auth

[ComRes_DSCC_Controller_Status-v1](#) Controller status API, view control unit and IO board status.

GET Controller Status

Additional APIs and points may be available upon request. Contact your Copeland Sales representative or Customer Success ColdChainCustomerSuccess@Copeland.com to begin this process.

Weather API

Copeland also supports a Weather API, which is available through a separate license. The weather API can be used to input real time weather data in place of physical weather stations traditionally on premise to obtain this information.

Weather data is fetched based on site geographic information from the OpenWeather service and sent those data to a weather EAS application in the controller, which is deployed through Connect+. A configurable schedule runs the weather data service.

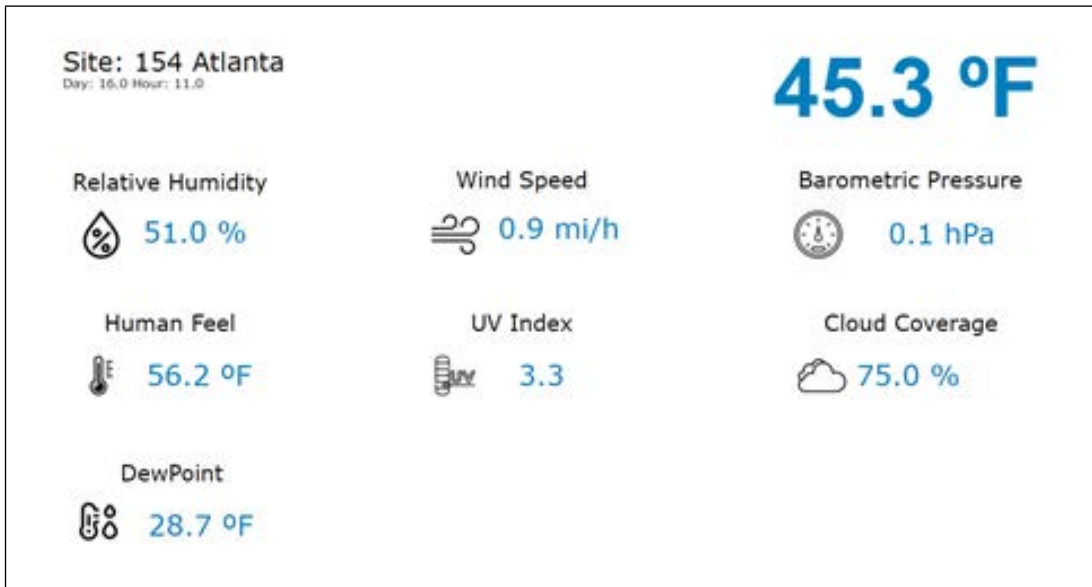
Controller Support

CONTROLLER	REAL TIME WEATHER DATA
E2 (3.08F03 and later)	Yes
E2E (4.08F03 and later)	Yes
E3 (2.18F01 and later)	Yes
Site Supervisor (2.18F01 and later)	Yes
EVO	No
Danfoss	No

Weather EAS Application



Weather Graphical Screen in Controller



Additional APIs and points may be available upon request. Contact your Copeland Sales representative or Customer Success ColdChainCustomerSuccess@Copeland.com to begin this process.

Disclaimer: Access to Copeland's API interfaces (MQTT, REST, C+ API, SOAP) is provided with the understanding that improper use can severely impact the operation of your establishment. Misconfiguration and/or misuse may result in equipment malfunctions, increased energy consumption, perishable food loss, and/or potential voiding of equipment warranties. It is critical that only experienced and authorized personnel utilize these interfaces. Any integration attempts should be thoroughly tested in a controlled environment prior to deployment. Copeland assumes no responsibility for any negative outcomes, including operational disruptions arising from the use or misuse of these APIs and by using such APIs, you agree to indemnify Copeland fully from any such negative outcomes whether direct or indirect and in any form. Unless you have a written, fully-executed agreement with Copeland, all services are provided by Copeland subject to Copeland's Terms, including Copeland Cold Chain Terms of Service, available at www.copeland.com/en-us/terms, incorporated by this reference.

Visit our website at copeland.com/en-us/products/controls-monitoring-systems for the latest technical documentation and updates.
For Technical Support call **833-409-7505** or email ColdChain.TechnicalServices@Copeland.com