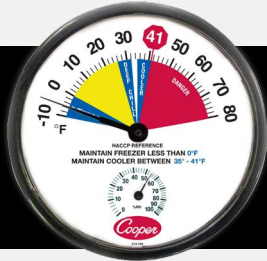


# 212 series wall thermometers spec sheet

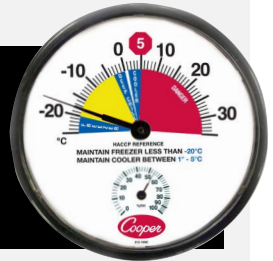
*12-inch oversized wall thermometers for easy viewing from across the storage room*



212-150 Indoor / Outdoor Thermometer



212-159 Freezer and Cooler Thermometer

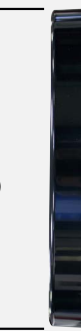


212-159C-8 Freezer and Cooler Thermometer, Celsius

The 212 series wall thermometers all have a large, easy-to-read dial, 12" (305 mm) in diameter. The 212-159 features brightly colored HACCP reference color-zones on the dial face for easy viewing, as well as increasing employee awareness while monitoring temperatures. All three units have a 0% to 100% Relative Humidity dial. Easy to mount with back hanger and plastic lens with UV protection for outdoor environments.



305 mm  
(12" Dia.)



**Note:**  
All three units  
have the same  
dimensions

32 mm  
(1.25")

## Specifications

- Temperature Accuracy:  $\pm 3^{\circ}\text{F}$
- Humidity Range: 0% to 100% RH
- Humidity Accuracy:  $\pm 5\%$
- Dial Diameter: 12" (305 mm)
- Bi-metal coil movement
- Large black pointer makes viewing easy
- Limited Warranty: 1 year

### 212-150 Indoor / Outdoor Thermometer

- Unit Range:  $-40^{\circ}$  to  $120^{\circ}\text{F}$  ( $-40^{\circ}$  to  $50^{\circ}\text{C}$ )
- Resolution:  $2^{\circ}\text{F}$  ( $1^{\circ}\text{C}$ ) increments

### 212-159 Freezer and Cooler Thermometer

- Unit Range:  $-10^{\circ}$  to  $80^{\circ}\text{F}$
- Resolution:  $2^{\circ}\text{F}$  increments
- HACCP reference color-zoned dial

### 212-159C-8 Freezer and Cooler Thermometer Celsius

- Unit Range:  $-25^{\circ}$  to  $35^{\circ}\text{C}$
- Resolution:  $1^{\circ}\text{C}$  increments
- HACCP reference color-zoned dial

## Packaging

- Individual Package Weight: 1 lb. 4 oz. (567 g)
- Package Dimensions: 12.25" x 12.25" x 1.375" (311 mm x 311 mm x 35 mm)
- Package Cube: 0.12
- Ten (10) per master carton



Copeland Cold Chain LP  
67-924 | V0924

To learn more, visit [copeland.com/cooper-atkins](http://copeland.com/cooper-atkins)

©2024 Copeland LP.

**COOPER-ATKINS**