

Trane two-stage furnace control for variable speed blower & inducer motors

50V54-820

*Direct OEM replacement for
80V or 120V ignitor applications*



Direct OEM replacement

- Fast drop-in OEM mounting for XV95 furnaces
- Includes 120V ignitor and harness to service 80V and 120V applications
- Detailed installation instructions



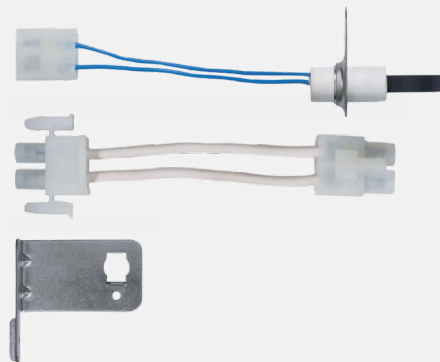
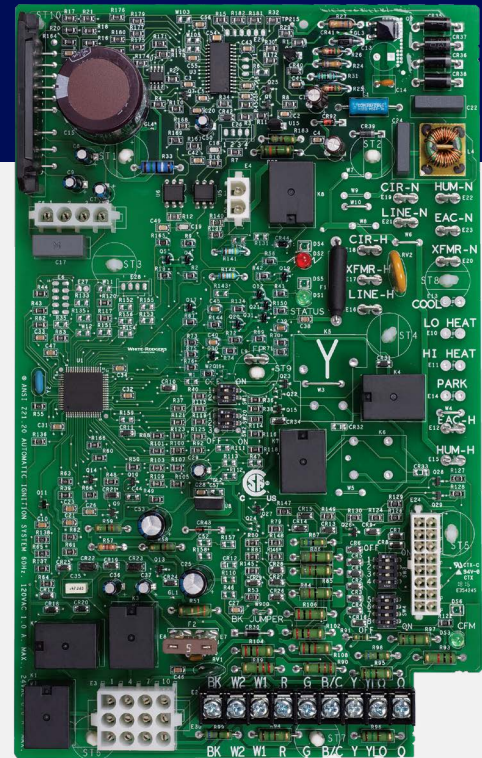
Advanced diagnostics

- LED fault recall and status codes



Complete cross reference

- Extensive and up-to-date cross reference by OEM model number



*50V54-820 replaces
previous model 50V64-743*

WHITE RODGERS
by **COPELAND**

Specifications:

Electrical ratings:

- Input voltage: 25VAC, 60 Hz
- Max input current: @ 25VAC 525 mA + MV
- Inducer output: 3 phase

Relay contact ratings:

- Gas valve relay: 1.5A @ 30 VAC, 0.6 pf
- Ignitor relay: 2.0A @ 120 VAC
- Humidifier load: 1.0A @ 120 VAC
- Electronic air cleaner load: 1.0A @ 120 VAC

Flame current requirements:

- Min current to insure flame detection: 1.0 μ A DC*
- Max current for non-detection: 0.1 μ A DC*
- Max allowable leakage resistance: 100 M ohms

* Measured with a DC microammeter in series with the flame probe lead

Timing specifications:

(All times are in seconds unless noted otherwise)

20	2	45	5	60/100*/140/180	0
Ignition warm-up	Ignition activation period	Heat ON delay	Post-purge	Blower OFF delay	Cooling ON delay

* Denotes factory default

50V54-820 cross reference replacement:

Trane/American Standard brands

CNT03777
CNT04678
CNT04985
CNT05160
CNT06017
CNT06585
D342062P01

White-Rodgers

D342263P01
D342263P02
D342263P03
D342263P04
D343687P01
D343687P02
KIT15816

50V54-507
50V54-571
50V54-820
50V64-495
50V64-507
50V64-743

Operating temperature range:

-40° to 176° F (-40° to 80° C)

Humidity range:

5 to 95% relative humidity (non-condensing)

Agency approvals:

CSA - USA/Canada

Gases approved:

Natural, manufactured, mixed, liquefied petroleum, and LP gas-air mixtures are all approved for use

1 Year Limited Warranty

Trane OEM direct replacement 120V ignitor

789A-820

Included in furnace control kit but also sold separately

- Ignitor with OEM wiring plug connector
- Trane mounting bracket plus screws



Replaces Trane models:

- D156805P01
- IGN00146
- IGN00152

The White-Rodgers mobile app:

- Latest cross reference
- Installation instructions
- Spec sheets
- Product selection



Customer Service or Technical Help: 888-725-9797
R-4826 ©2024 Copeland LP.

WHITE RODGERS
by **COPELAND**