

Connect+ General User Guide





Emerson Digital Solutions
1065 Big Shanty Road NW, Suite 100
Kennesaw, GA 30144 USA
770-425-2724 • 1-800-829-2724

www.climate.emerson.com

Email: ColdChain.TechnicalServices@Emerson.com

Contents

1 GENERAL INFORMATION	1
1.1 TERMINOLOGY	1
2 LOGGING INTO CONNECT+.....	2
2.1 LOG IN	2
2.2 NAVIGATE CONNECT+.....	3
2.2.1 <i>Connect+ Enterprise Toolbar Navigation</i>	4
2.2.2 <i>Store Hierarchy by Navigation Tree</i>	4
2.2.2.1 <i>Definition of Tree Hierarchy</i>	5
2.2.2.2 <i>Tree Levels</i>	6
2.2.3 <i>Menu Access Summary</i>	7
2.3 COMPLETE MY PROFILE AND SET PREFERENCE	8
2.3.1 <i>Profile & Preference</i>	8
2.3.2 <i>Set Connect+ Homepage</i>	9
2.4 MANAGE YOUR OWN LIST	11
3 ADVISORY MAP, ADVISORY VIEW AND LIVE ADVISORIES	13
3.1 ADVISORY MAP	14
3.1.1 <i>Access problematic stores via Advisory Map</i>	14
3.1.2 <i>Your Advisory Map Setting</i>	15
3.2 ADVISORY VIEW.....	16
3.2.1 <i>Advisory List View</i>	17
3.2.2 <i>Read Alarm Related Log Graph</i>	18
3.2.3 <i>Other Quick Links</i>	18
3.2.4 <i>Filter Advisory List View</i>	19
3.2.5 <i>Customized Advisory List View</i>	19
3.2.6 <i>Access Advisory List View from Navigation Tree</i>	20
3.3 VIEW AND PROCESS LIVE ADVISORIES	20
3.3.1 <i>View Live Advisory</i>	20
3.3.2 <i>Process Live Advisories</i>	21
4 VIEW SITES NOT SENDING ALARMS	23
5 MONITOR SITE FROM GRAPHICAL SCREENS	25
5.1 GRAPHICAL SCREEN	25
5.2 WHAT YOU CAN DO WITH GRAPHICAL SCREENS.....	25
5.3 OVERRIDE POINT	26
5.4 MODIFY POINTS.....	27
5.4.1 <i>View Real Time Graph</i>	28
5.5 SYSTEM SUMMARY SCREEN	28
5.6 VIEW CUSTOMIZED SCREENS	30
6 WATCH AND GRAPH POINTS	31
6.1 WATCH POINTS.....	31
6.2 WHAT ELSE YOU CAN DO WITH THESE POINTS	32
6.2.1 <i>Display Log Graph</i>	33
6.2.2 <i>Retrieve Logs</i>	33
6.2.3 <i>Export</i>	34
7 ACCESS CONTROL.....	35
7.1 TERMINAL MODE.....	35

7.3 NETWORK STATUS	36
8 CONTROLLER ACTIVITY	37
8.1 MANUAL DEFROST	37
8.1.1 Refresh Controller & Application	38
8.2 SCHEDULE CONTROLLER ACTIVITY	39
8.2.1 Add a New Schedule	39
8.2.2 Schedule Manager	40
8.2.3 Schedule Assistant	41
8.3 VIEW ACTIVITIES STATUS	41
9 GLOBAL SEARCH	43
10 VIEW ENTERPRISE SUMMARY	44
11 INSTALLING CUSTOM SCREENS IN SITE SUPERVISOR	45
APPENDIX A: SUMMARY OF EXPORT CAPABILITY	A-1
APPENDIX B: SYSTEM SUMMARY SCREENS	B-1

1 General Information

Connect+ is enterprise management software designed to monitor your store or region performance in real time. Currently Connect+ supports Emerson Controllers E2, Site Supervisor, and Dixell.

This document provides a step-by-step guide for **Store Managers or Monitoring Technicians** on how to use Connect+ to monitor your stores or regions. The following topics are included in this user guide:

- How to use an Advisory Map to locate your problematic sites.
- How to locate sites that are not sending alarms.
- How to diagnose advisories .
- How to review Live Advisories from controllers.
- How to monitor stores in real time and compare store/device performance.
- How to access controllers and schedule jobs to read data.
- Tips to process Live Advisories.
- How to override and manual defrost.
- How to search a site, a controller or a device in your enterprise.
- Review Enterprise Summary including stores, controllers and devices information.
- How to export store data.

•**Application Type:** The type of application that has been set up inside a unit (controller)
Example: AHR, Circuits, Condenser, Lighting Schedule, User Access are all App Type.

•**Application:** Apps are programmed inside a controller to access a physical device or define the controller setting.

•**Point:** Application's data attributes.

• **Activity:** A job that a user conducts to access the controller.

•**Obtain Controller Information:** Obtain controller hierarchy including every controller, application, and points.

•**Refresh Unit:** Refresh controller Information.

•**Refresh Application:** Refresh the applications of a controller.

•**Refresh Point List:** Refresh all the points of an application type/application.

•**Retrieve Logs:** Get log data from one or multiple points.

•**Manual Defrost:** Defrost a freezer manually.

•**Override/Modify:** Change a Point Value.

•**Display Log/Real Time Graph:** Display log graph or real time graph for a specific point.

1.1 Terminology

- **Advisory:** Alarm/Notice generated from controller, or notification from Connect+.
- **Graphical Screen:** Floor Plans or Summary Screens for real time store monitoring.
- **Tree Hierarchy:**
 - Directory:** A region or a banner of a customer.
 - Site:** A store in a region or banner.
 - Control System:** A set of controllers within one store.
 - Unit:** Controller

2 Logging into Connect+

2.1 Log In

Before logging into Connect+, contact your manager or IT department to obtain your Connect+ login credentials.



Figure 2-1 - Connect+ Login

Upon your first login to Connect+, you will be asked to change your password. Please enter the generic password you received as Current Password. Select a password with no less than 8 characters.



Figure 2-2 - Reset Your Password



Figure 2-3 - Connect+ Login

If you have forgotten your Password or Login ID, click **Forgot Password** or **Forgot Login ID**. You must have a valid email in your user profile with Connect+ in order to receive the temporary password or Login ID.

2.2 Navigate Connect+

Once logged in, you will see the Connect+ UI is designed with four areas.

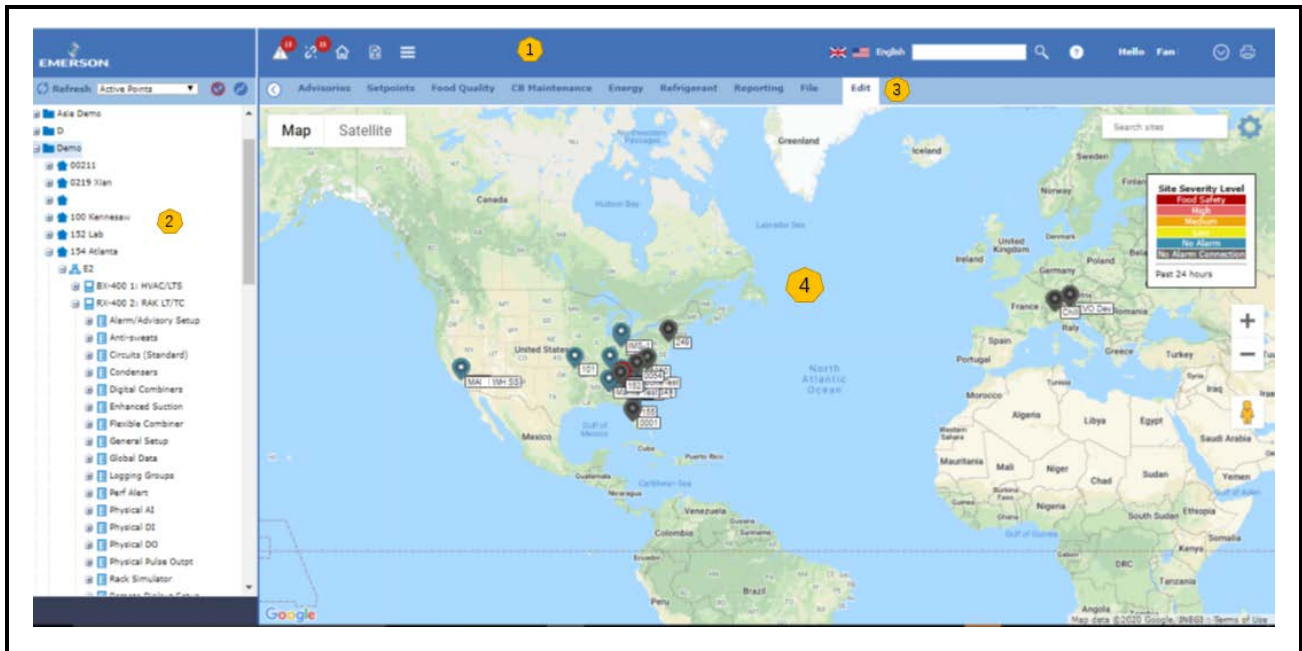


Figure 2-4 - Navigation Panel

- **Area 1** contains main toolbar icons for you to access **Enterprise Level Information**, such as alarms, sites without alarm connection, Store/ Device Summary, Schedule Jobs, Global Search etc.
- **Area 2** is the **Navigation Tree**, which is set by your Administrator to reflect your Enterprise Hierarchy. The navigation tree starts from the Directory level, which reflects the region or banner you belong to, then the Site level, which reflect your stores. Under each store, you can review the controllers installed, down to the devices the controller controls and device attributes. When you right-click on each level in Navigation Tree, you will see the **Right-Click Menu**, which is provided to review information or perform activities to access controllers.
- **Area 3** is the **Context Menu**, which is associated with your Navigation Tree level. The Context Menu is same as the **Tree Right-Click Menu**.
- **Area 4** is the major **Review** area. When you click the enterprise toolbar and Navigation Tree right-click menu or context menu, the information or controller activity progress/result would be displayed in this area.

Advisory	Count indicates the Total Number of Active Alarms in the Past 24 Hours. Users will be directed to View Advisories upon selecting.
Sites without Connection	Count indicates the total number of sites without connection in the past 24 Hours. Users will be directed to the Connection Verification Report upon selecting.
Homepage	Users will be directed to their own Connect+ Homepage once preferences are set.
Enterprise Summary	Enterprise Summary contains region, site, controller and device information.
Header Menu	Access to Schedule Manager and Activity History to <ul style="list-style-type: none"> • Schedule different activities to execute job on the controller • View activity result and detail
Language Setting	Allow user to change Language Setting
Global Search	Offers Global Search for your Site Homepage and global search for any sites, controller, devices or points.

Table 2-1 - Toolbar Navigation Legend

Note: Details about Advisory Map, Advisory View, Site without Connection, List Power Builder, Schedule Manager, Enterprise Summary and Global Search would be covered in later sections.

2.2.1 Connect+ Enterprise Toolbar Navigation

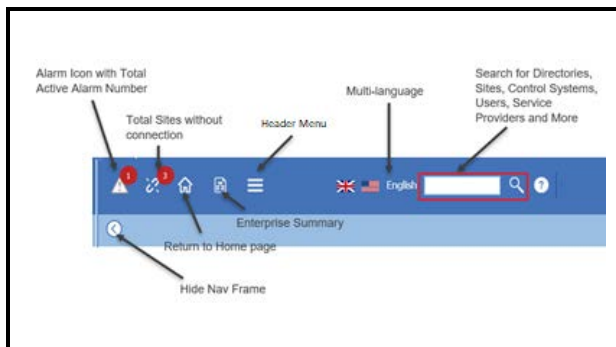


Figure 2-5 - Toolbar Navigation

2.2.2 Store Hierarchy by Navigation Tree

As you can see from the **Navigation Tree** of Connect+ landing page interface, a store hierarchy is reflected by the Tree listed with the concept of **Directory, Site, Control System, Unit, Application Type, Application and Point**.

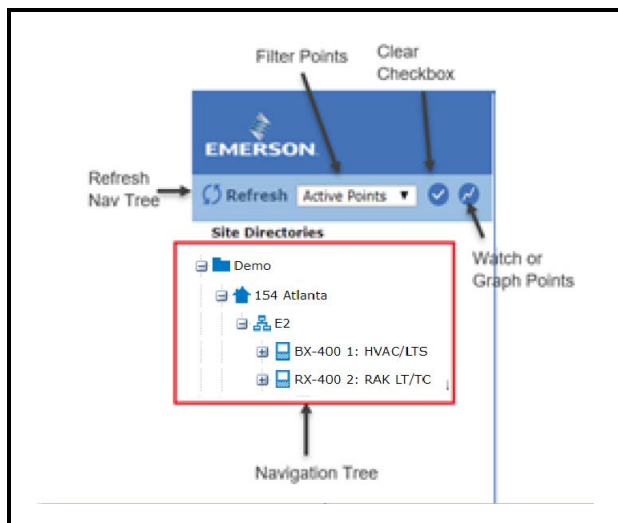


Figure 2-6 - Forget Password

2.2.2.1 Definition of Tree Hierarchy

Directory

Directory is a region or a banner of a customer. Connect+ offers a sub-directory under the parent directory to reflect a customer's own organization structure.

Sites

Sites are stores in a customer's organization. One site belongs to only one Directory.

Control System

A control system is a set of controllers within one localized store. A typical grocery store control system would contain building management controllers and refrigeration controllers.

Unit

A unit is an individual controller at a site belonging to a control system. There may be more than one unit in each control system. One controller would be configured as the gateway in the control system to communicate with Connect+.

Application Type

An application type is the type of application that has been set up inside a unit (controller). There are many types of applications programmed into the controller. All application types contain applications that belong to the same application type.

Application types ranges from **physical applications** that connect to a real device, such as air handlers, standard circuit, sensor control analog and digital combiners.

Or **logical applications** such as zones, power monitoring, global data, time and dates, time schedules, user access and more.

See below for a REF Controller Application Types and Building Controller Application Types examples:

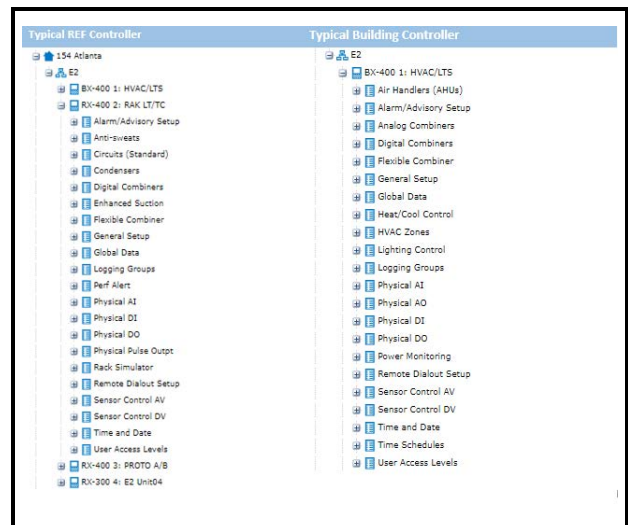


Figure 2-7 - Application Types

Application Instance

An application instance shows the application (if available) that has been programmed inside a controller to access a physical device or define the controller setting. Through the application instance, users can either access a physical device's data points, such as an ice cream case controller. Or access to applications that are programmed to configure the controller, such as user access or alarm settings.

Point

Application points are attributes that have been programmed inside a controller application. Access to application points allows the user to view details about the points, graph points, retrieve logs, and make changes. In Connect+, there are three categories of points: Input, Output or Parameters.

An input point can be associated with an output point of the same data type, and vice versa (for example, digital outputs to digital inputs, analog inputs to analog outputs). An input point cannot be associated to another input point, likewise, an output point cannot be hooked to another output point.

- Active Points is the default each time the user starts up the browser and will show all configured points in the controller.
- Active with Logs shows active points that have a controller log available.
- Points with Logs shows points that have a controller log available.
- All Points shows all possible points for an application instance, whether a point is configured or not. An icon will appear next to the point if the point has a log.

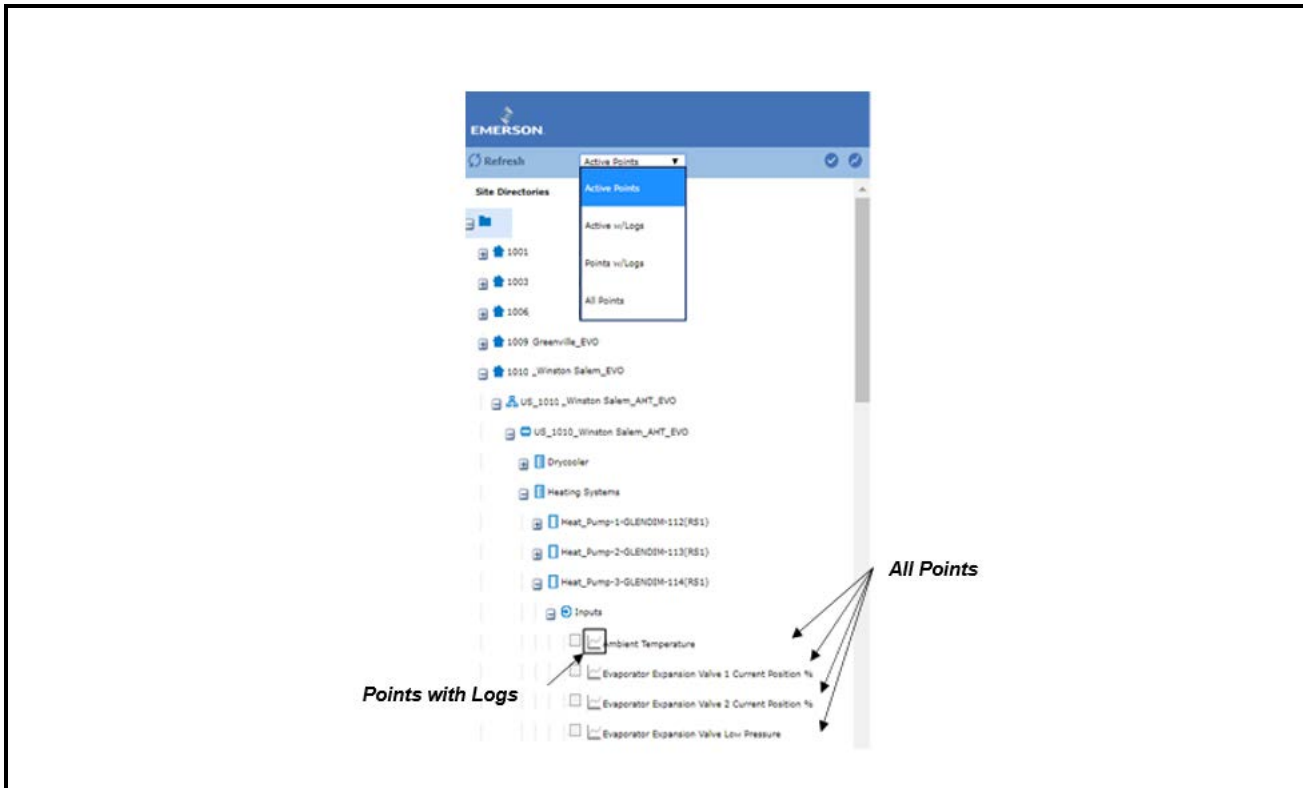


Figure 2-8 - Active Points

2.2.2.2 Tree Levels

- **Advisory View:** At any level, you will have access to Advisory View, which allows you to review advisories for a region, store, controller or device.
- **Graphical Screens:** You can also access different summary information at each level, which is illustrated as System Graphical Screens.
- **Controller Access:** You can only access a controller at the control system level and controller level. From the controller level, you can remote login using Terminal Mode.
- **Controller Activity:** you can perform three types of job at different levels:
 - **Any Level:** Retrieve logs
 - **Directory/Site/Control System/Controller Level:** Obtain controller information
 - **Controller Level:** Refresh application
 - **Application Type Level:** Refresh point list
 - **Application Level:** Manual defrost freezer or cases
 - **Point Level:** Override/modify point value, display log/real time graph

Tree Level	System Screens	Controller Activity	Controller Access
Directory	Advisory Map	Obtain Controller Information Retrieve Logs	NA
Site	Ref Summary Building Summary Other Summary	Obtain Controller Information Retrieve Logs	NA
Control System	NA	Obtain Controller Information Refresh Units Retrieve Logs	View Network Status
Unit	Controller Summary	Obtain Controller Information Refresh Units Retrieve Logs	Terminal Mode View Network Status Controller Logs & Status
App Type	App Summary Defrost Summary	Refresh Point List Retrieve Logs	NA
Application	Status Graphical Summary	Refresh Point List Retrieve Logs	NA
Point	NA	Override Modify Display Log Graph Real Time Graph	NA

Table 2-2 - Tree Levels

2.2.3 Menu Access Summary

In addition to the top menu and tree hierarchy right-click menu, you can also access the right-click menu from the **Graphical Screen** or **Watch Point Lists**.

Below table summarizes menu access for advisory and controller activity at each entry point:

	Top Menu	Tree Right-Click Menu	Graphical Screen Right-click Menu	Watch Point Right-click Menu
Advisory View	Enterprise	Any Level	Point Level	Point Level
	<i>Run Once or Schedule</i>	<i>Only Run Once from Right-Click Menu</i>		
Activity	From Schedule Manager, user can choose Run Once or Run by Schedule	Retrieve Logs Obtain Controller Info Refresh Units Refresh Application Refresh Point List Manual Defrost Override Modify Display Log Graph Real Time Graph	Retrieve Logs Override Modify Display Log Graph Real Time Graph	Retrieve Logs Override Modify Display Log Graph Real Time Graph

Table 2-3 - Menu Access Summary

2.3 Complete My Profile and Set Preference

2.3.1 Profile & Preference

You might want to check your User Info to complete and set preferences. Click the icon next to your name and then click **User Info**.

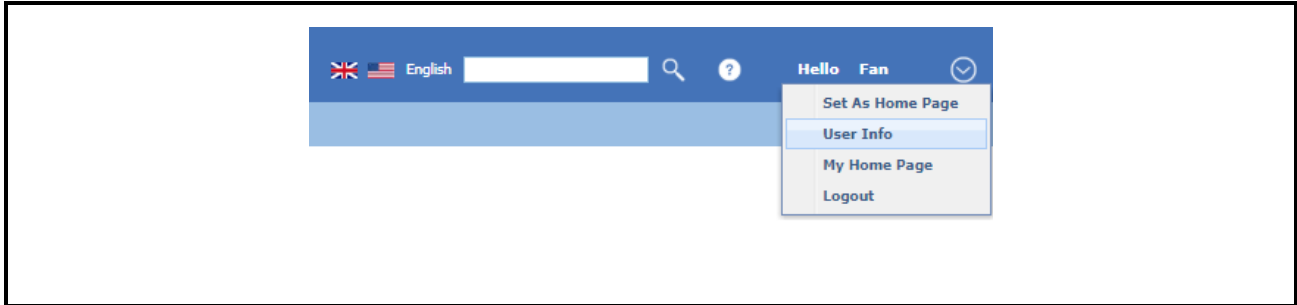


Figure 2-9 - User Info

Complete Email

If you do not currently have an email, we recommend you enter that information. Without email information:

- You cannot receive emails from Connect+ when you forget a password or forget the login ID process.
- You also cannot receive the verification code during login if your organization decides to turn on Multifactor Authentication.

Updated Password

If your organization has activated Reset Password Every 90 days, you will be reminded to update your password when your current password is expiring within 14 days.

A screenshot of a web form titled 'Update Your Password'. The form is divided into several sections. On the left, under 'User Information', there are fields for 'Login ID' (value: f), 'First Name' (value: Fa), and 'Last Name' (value: D). Below this is a section for updating the password with fields for 'Current Password', 'New Password', and 'Retype New Password'. An 'E-mail' field contains the placeholder 'yourname@email.com'. To the right of the password fields is a 'Preferences' section with several checkboxes: 'Show GS Screen Edit Tool' (unchecked), 'Enable Home Page' (checked), 'Hide Nav Frame' (unchecked), and 'Enable GS Screen Auto Log Off' (checked). Below the checkboxes are 'Cancel' and 'Save' buttons. On the far right, there is a 'Units' section with three tabs: 'English', 'Metric', and 'Global'. The 'Metric' tab is selected. Below the tabs is a list of units with dropdown menus: Temperature (Fahrenheit (DF)), Temp. Change (Delta Fahrenheit (DDF)), Temp. Rate Change (degrees F/hour (DFH)), Pressure, Large (pound/sq in (PSI)), Pressure, Small (in of water (INW)), Velocity, Air (feet/minute (FPM)), Velocity, Liquid (gallons/minute (GPM)), Liquid Volume (gallons (GAL)), Volume Flow (cubic feet/minute (CFM)), Current (amperes (A)), Light (foot-candles (FTC)), Weight (pounds (LBS)), and Enthalpy (Btu/lb).

Figure 2-10 - Update Your Password

Setting Preferences

- Show GS Screen Edit Tool: This allows GS Screen menu visible on the right-click tree menu, default is not enabled.
- Enable Home Page: This allows you to set your Connect+ Homepage, default is not enabled.
- Hide Nav Frame: This allows you to hide the Navigation Tree. Default is a visible Navigation Tree.
- Enable GS Screen Auto Logout: This allows you automatically logged off due to GS Screen page inactivity for 30 minutes.
- Engineering Units: English/Metric/Global; default is set to English Units.

The screenshot shows the 'User Information' and 'Units' settings page. The 'User Information' section includes fields for Login ID (f), First Name (Fa), Last Name (D), and an 'Update Your Password' section with fields for Current Password, New Password, Retype New Password, and E-mail (youname@email.com). Below this is the 'Preferences' section with checkboxes for 'Show GS Screen Edit Tool' (unchecked), 'Enable Home Page' (checked), 'Hide Nav Frame' (unchecked), and 'Enable GS Screen Auto Log Off' (checked). The 'Current Home Page' is set to 'System Advisory Screen'. There are 'Cancel' and 'Save' buttons at the bottom. The 'Units' section has three tabs: 'English' (selected), 'Metric', and 'Global'. A list of units is shown with dropdown menus for each: Temperature (Fahrenheit (DF)), Temp. Change (Delta Fahrenheit (DDF)), Temp. Rate Change (degrees F/hour (DFH)), Pressure, Large (pound/sq in (PSI)), Pressure, Small (in of water (INW)), Velocity, Air (feet/minute (FPM)), Velocity, Liquid (gallons/minute (GPM)), Liquid Volume (gallons (GAL)), Volume Flow (cubic feet/minute (CFM)), Current (amperes (A)), Light (foot-candles (FTC)), Weight (pounds (LBS)), and Enthalpy (Btu/lb).

Figure 2-11 - Enable GS Screen

- You can set your language preference directory from the enterprise toolbar. Currently you can choose English or Spanish.

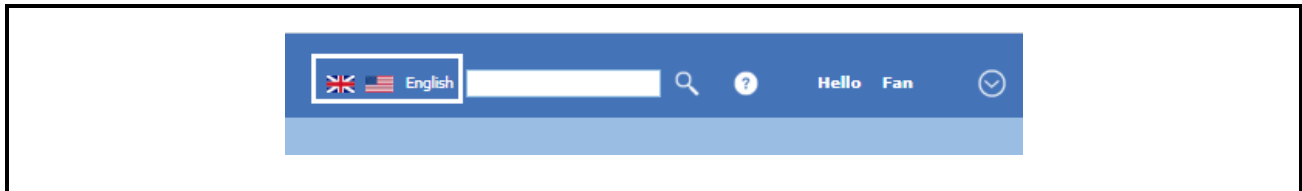


Figure 2-12 - Language Preference

2.3.2 Set Connect+ Homepage

When you enable the Homepage setting, you will see the Set as Homepage menu option when you click the user profile icon next to your name. Currently Connect+ allows you to set Graphical Screens as your Connect+ Homepage.

We recommend you set the Enterprise Advisory Map as your Connect+ Homepage to better optimize your Enterprise overall performance.

If Advisory Map has been enabled for your organization, you can access Advisory Map at the Directory level. Click your organization's parent directory, or access from right-click menu > **Advisory Map**

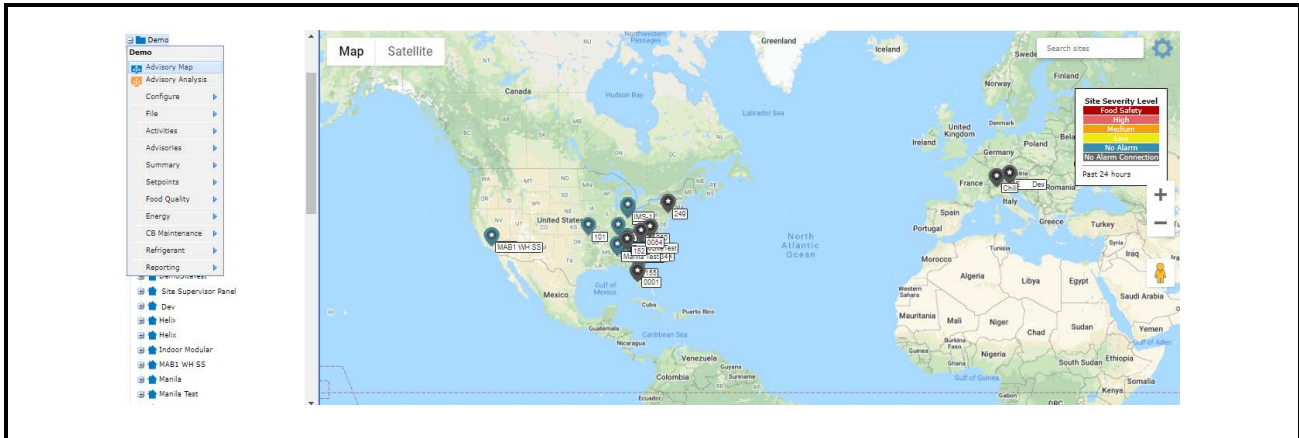


Figure 2-13 - Advisory Map Page

When you are on the Advisory Map page, you will see all sites in different alarming states. Advisory Map allows you to have a quick glance on your Sites' status in the past 24 hours. Click **Set As Home Page** from the user profile icon next to your name.

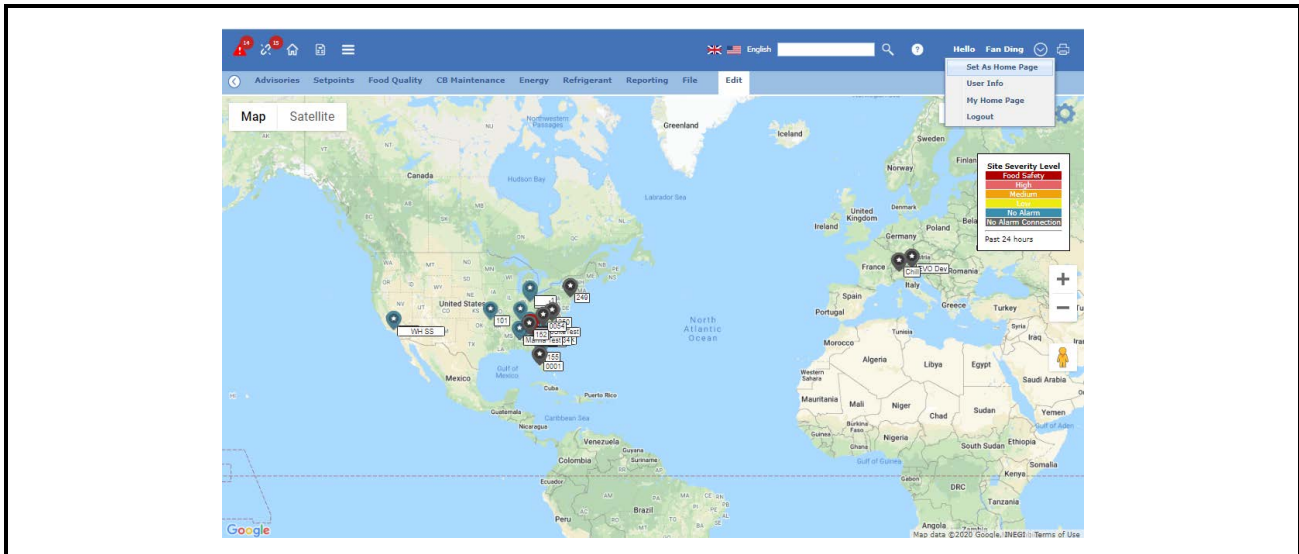
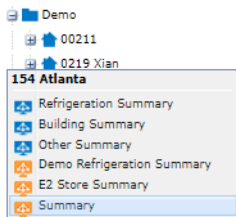


Figure 2-15 - Graphical Screen

You can also set other Graphical Screens as your Homepage. As introduced in the What is Connect+ session, Graphical Screens are Floor Plans or Summary Screens for real time store monitoring. You can access these Graphical Screens from the Navigation Tree, when you right-click on any level, you will see a list of System Summary Screens indicated with blue icon, and customized graphical screens with an orange icon.



Open any Graphical Screen at any tree level, then click **User Profile > Set As Homepage**, then the Graphical Screen will be set as your Connect+ Homepage.

Note: You can also set Homepage for each site, this will be covered when we review more details into Graphical Screen Session.

2.4 Manage Your Own List

A list contains points that you are interested in. You have flexibilities to choose your preferred points from different stores, controllers for same application type to compare store performance. Or you can also select a number of points for a single store or controller to monitor.

You can also create list for yourself via **List Power Builder**. Access List Power Builder from the link of Watch or Graph Points page.

Watch Or Graph Points

Select points to watch or graph by using the checkboxes in the tree.

Load Selection from list

Notes:

Disabled point names indicate points which only have logs and cannot retrieve real time values.

[List Power Builder](#)

Figure 2-18 - Watch or Graph Points

Watch Points Lists

Select a list to load or type in a new List Name to create a new List.

Load List:

List Name:

Criteria

Use * (asterisk) for wildcard at the start or end of a match string. Separate multiple matches in a single field with commas. [Additional Help](#)

Directory:

Site:

Control System:

Unit:

Application Type:

Instance:

Point Category:

Point:

Add To List

List Size: 0

No.	Dir	Site	CS	Unit	App Type	App Inst	Category	Point

Figure 2-16 - List Power Builder

You can create a new list by entering your criteria to the right. For example, if you want to get all Case Controller Temperature points, you can leave Directory/Site/Control System/Unit blank, fill in your Case Controller Application Type name. If there are multiple names, separate them by commas. Then enter the Point Name as the same name from your tree. Click **Add to List** and the list of points would be retrieved as below.

You can also filter points and remove filtered items to further refine your List.

Watch Points Lists

Select a list to load or type in a new List Name to create a new List.

Load List:

List Name:

Criteria

Use * (asterisk) for wildcard at the start or end of a match string. Separate multiple matches in a single field with commas. [Additional Help](#)

- Directory
- Site
- Control System
- Unit
- Application Type
- Application Instance
- Point Category
- Point

List Size: **10000**

No.	Dir	Site	CS	Unit	App Type	App Inst	Category	Point
<input checked="" type="checkbox"/>		Site 2	SS	BXe:HVAC/Lite	AHULarge	AHU 1	Params	A FreezeStat input is too low1
<input checked="" type="checkbox"/>		Site 2	SS	BXe:HVAC/Lite	AHULarge	AHU 1	Params	A FreezeStat input is too low1--Category
<input checked="" type="checkbox"/>		Site 2	SS	BXe:HVAC/Lite	AHULarge	AHU 1	Params	A FreezeStat input is too low1--Display Message
<input checked="" type="checkbox"/>		Site 2	SS	BXe:HVAC/Lite	AHULarge	AHU 1	Params	A FreezeStat input is too low1--Monitor Alarm
<input checked="" type="checkbox"/>		Site 2	SS	BXe:HVAC/Lite	AHULarge	AHU 1	Params	A FreezeStat input is too low1--Repeat Rate
<input checked="" type="checkbox"/>		Site 2	SS	BXe:HVAC/Lite	AHULarge	AHU 1	Params	A FreezeStat input is too low2
<input checked="" type="checkbox"/>		Site 2	SS	BXe:HVAC/Lite	AHULarge	AHU 1	Params	A FreezeStat input is too low2--Category
<input checked="" type="checkbox"/>		Site 2	SS	BXe:HVAC/Lite	AHULarge	AHU 1	Params	A FreezeStat input is too low2--Display Message
<input checked="" type="checkbox"/>		Site 2	SS	BXe:HVAC/Lite	AHULarge	AHU 1	Params	A FreezeStat input is too low2--Monitor Alarm
<input checked="" type="checkbox"/>		Site 2	SS	BXe:HVAC/Lite	AHULarge	AHU 1	Params	A FreezeStat input is too low2--Repeat Rate

Showing 1 - 10 of 10000 Page Size:

Figure 2-17 - Watch Point Lists

Enter a unique name for your list. **Save As a New List** button will display when you have a valid list name. Click **Save**, and you can later use this point list to watch your store.

Watch Or Graph Points

NOTE: Only the first 15 points will be used on the graph.

Point
<input checked="" type="checkbox"/> 1. HVAC/LTS/Air Handlers (AHUs)/1-MAIN AHU/Outputs/SPACE TEMP OUT
<input checked="" type="checkbox"/> 2. HVAC/LTS/Air Handlers (AHUs)/SALES AREA/Outputs/SPACE TEMP OUT
<input checked="" type="checkbox"/> 3. HVAC/LTS/Air Handlers (AHUs)/RTU-1 BAKERY/Outputs/SPACE TEMP OUT
<input checked="" type="checkbox"/> 4. HVAC/LTS/Air Handlers (AHUs)/RTU-2A PRODUCE/Outputs/SPACE TEMP OUT
<input checked="" type="checkbox"/> 5. HVAC/LTS/Air Handlers (AHUs)/RTU-2B PRODUCE/Outputs/SPACE TEMP OUT
<input checked="" type="checkbox"/> 6. HVAC/LTS/Air Handlers (AHUs)/RTU-3 KITCHEN/Outputs/SPACE TEMP OUT
<input checked="" type="checkbox"/> 7. HVAC/LTS/Air Handlers (AHUs)/RTU-4 CONF RM/Outputs/SPACE TEMP OUT
<input checked="" type="checkbox"/> 8. HVAC/Air Handlers (AHUs)/IT STORAGE/Outputs/SPACE TEMP OUT
<input checked="" type="checkbox"/> 9. HVAC/Air Handlers (AHUs)/RECEPTION AREA/Outputs/SPACE TEMP OUT
<input checked="" type="checkbox"/> 10. HVAC/Air Handlers (AHUs)/REFG LAB/Outputs/SPACE TEMP OUT
<input checked="" type="checkbox"/> 11. HVAC/Air Handlers (AHUs)/SIDNEY CONF RM/Outputs/SPACE TEMP OUT

Figure 2-18 - Watch or Graph Points

3 Advisory Map, Advisory View and Live Advisories

Advisories are defined as the notifications or alarms generated from Controllers to report store a crisis. Currently Connect+ support receives Advisories directly from Emerson Controllers E2, Site Supervisor, and Dixell. Connect+ can also receive Advisories from Danfoss if a Danfoss Site is sending an alarm to Emerson ProAct Alarm Service.

Advisory Type by Controller:

- E2: Alarm, Device Failure, Notice.
- Site Supervisor: Critical, Non-Critical, Notice.
- Dixell: NA
- Danfoss: Severe, Critical, Normal, Log Only

Advisory State:

Each advisory in Connect+ would have two states: **Active** or **Return to Normal**.

An advisory would remain active until the condition to generate the advisory returns to normal.

Active

Advisory occurs when a controller generates the alarm based on Alarm parameter configured. Alarm Parameters involved in Advisory Occurrence are High/Low limit and Alarm Delay.

For example, a technician can configure Case Controller Temperature Alarm Hi/Low limits for the normal temperature range and a 10-minute Alarm Delay. Once temperature is above or below setpoint, even above Hi Limit or below Low Limit, the controller will wait until the Alarm Delay passes, then generate the alarm.

The alarm will remain Active from the Advisory Occurrence Time until the point value returns to normal.

Return to Normal

An advisory will Return to Normal once the point value is back inside the normal range. There is another Alarm Configuration that will affect Advisory Return to Normal time: Alarm Hysteresis. When Alarm hysteresis is configured, the advisory will change to state Return to Normal only when current point value is in range of (Hi Limit – Alarm Hysteresis) and (Low Limit + Alarm Hysteresis).

Advisory Priority:

Advisory Priority is a concept with Emerson Controllers E2 and Dixell. Connect+ provides the same concept for these controller types:

- E2 1-99
- Site Supervisor NA
- Dixell 1-99
- Danfoss NA

Urgency Level

Urgency Level is a Connect+ defined Advisory Property. When you have multiple controllers across an organization, it is difficult to tell which advisories need your immediate attention with different advisory definitions for different controllers.

In order to solve this problem, Connect+ defined Urgency Levels as shown below. This allows users to have a consistent view of an advisory’s severity. Currently the definition is default in Connect+:

Urgency	Priority	State	Example Alarm Type
High	1 to 20	Active	Room Temp Alarm
Food Safety			Case Temp & Prod Temp
Medium			Heat Pump Status Block Alarm
Low			HRC Alarm from Heat Pump
Low	1 to 99	RTN	

Table 3-1 - Advisory Priority Explained for E2 and Dixell

Urgency	Type	State	Example Alarm Type
High	Critical	Active	Room Temp Alarm
Food Safety			Case Temp & Prod Temp
Medium			Heat Pump Status Block Alarm
Low	Non-Critical		
Low	Notice		
Low	Any	RTN	

Table 3-2 - Advisory Priority Explained for Site Supervisor

Urgency	Type	State
High	Severe or Critical	Active
Medium	Normal	
Low	Log Only	
Low	Any	RTN

Table 3-3 - Advisory Priority Explained for Danfoss

3.1 Advisory Map

3.1.1 Access problematic stores via Advisory Map

If your organization has enabled Advisory Maps, when you click on the parent directory in the Navigation Tree, you will see an Advisory Map as shown below with the Advisory Urgency legends. You can set this page as your Connect+ Home page for Enterprise View.

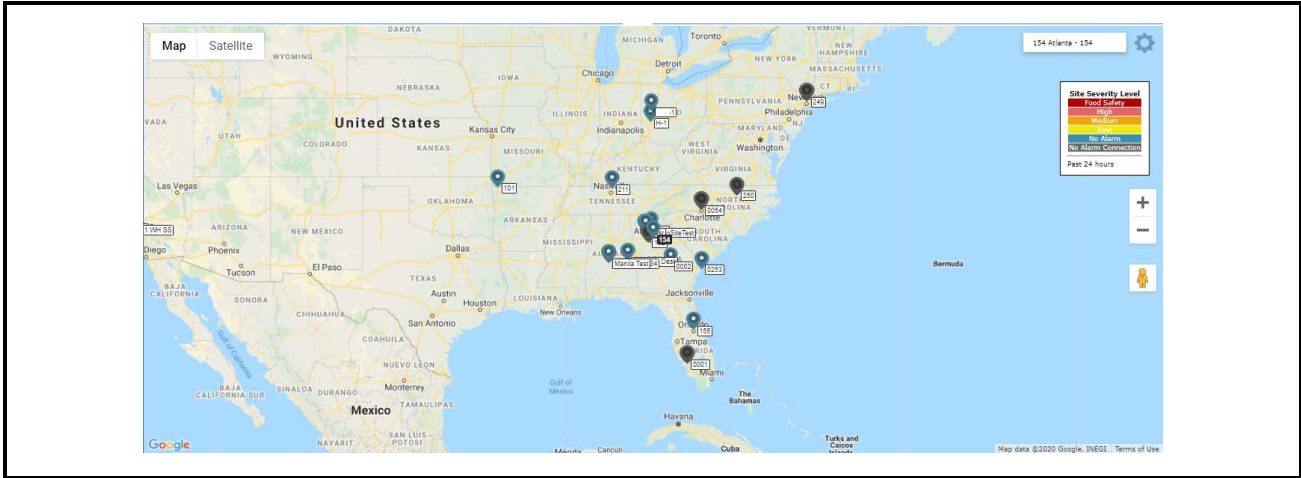
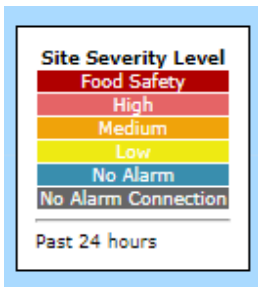


Figure 3-1 - Advisory Map

Sites in the Advisory Map are indicated with Alarm Urgency Level in the past 24 hours. You can click on any problematic sites to further investigate based on the below legends:



- Red indicates Sites with Food Safety Alarms/High Alarms.
- Orange indicates sites with medium urgency Alarms
- Yellow Indicates sites with low urgency Alarms.
- Green indicates sites that does not have active Alarms.
- Gray and flashing indicates s there is no Alarm Connection

If you know your Site Name, you can also enter the site name in the search box. The search result will flash for five (5) seconds on the Advisory Map for you to check further details.

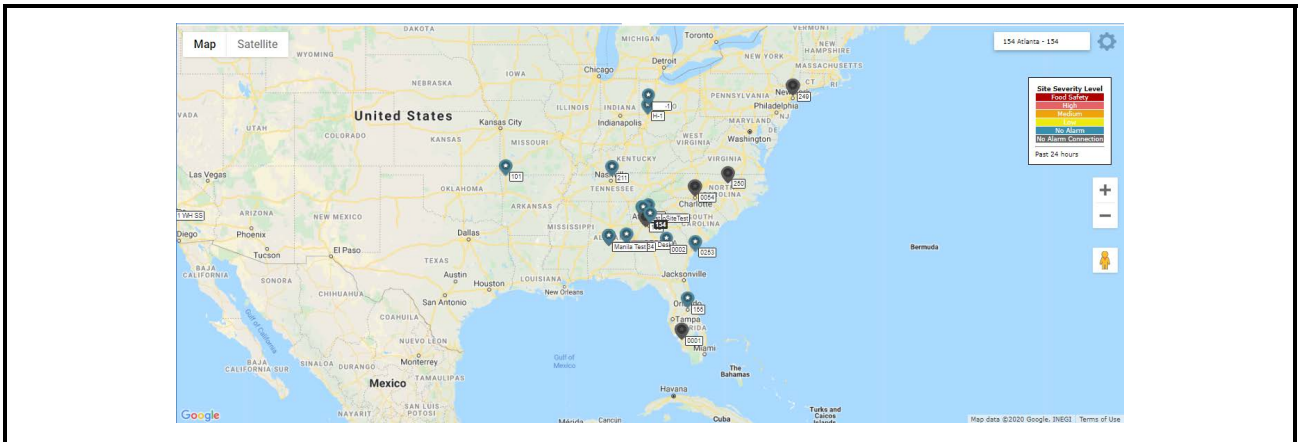


Figure 3-2 - Search Box

Clicking on the Site, you will see a snapshot of the Site, which includes Site Name, Site Address, and several quick links.

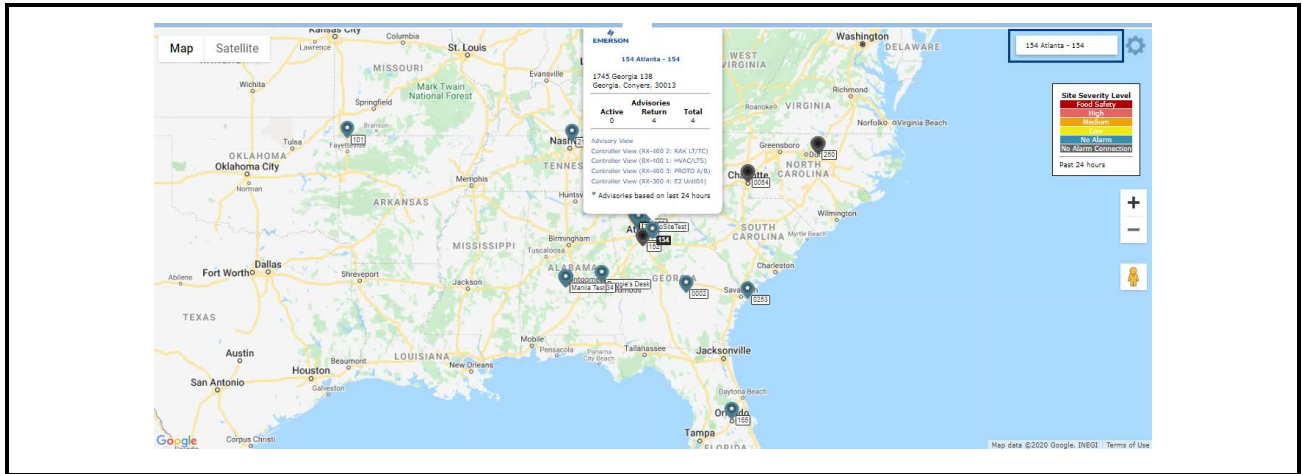


Figure 3-3 - Site Snapshot



154 Atlanta - 154

1745 Georgia 138
Georgia, Conyers, 30013

Active	Advisories Return	Total
0	4	4

Advisory View
Controller View (RX-400 2: RAK LT/TC)
Controller View (BX-400 1: HVAC/LTS)
Controller View (RX-400 3: PROTO A/B)
Controller View (RX-300 4: E2 Unit04)

* Advisories based on last 24 hours

- When clicking Site Name, you will be directed to your Site Home Screen if set.
- When clicking Advisory View, you will be directed to View Advisories.
- When clicking Controller View, you will be logged into the controller’s Terminal Mode.

Advisory Map View allows you to review your stores and locate problem sites as quickly as possible. The quick links for each site provides access to locate the advisory information and take further actions. From Advisory View, you can review Alarm Details and Log Graph. From the controller View, you can access Terminal Mode if you need to change settings to clear the alarm.

3.1.2 Your Advisory Map Setting

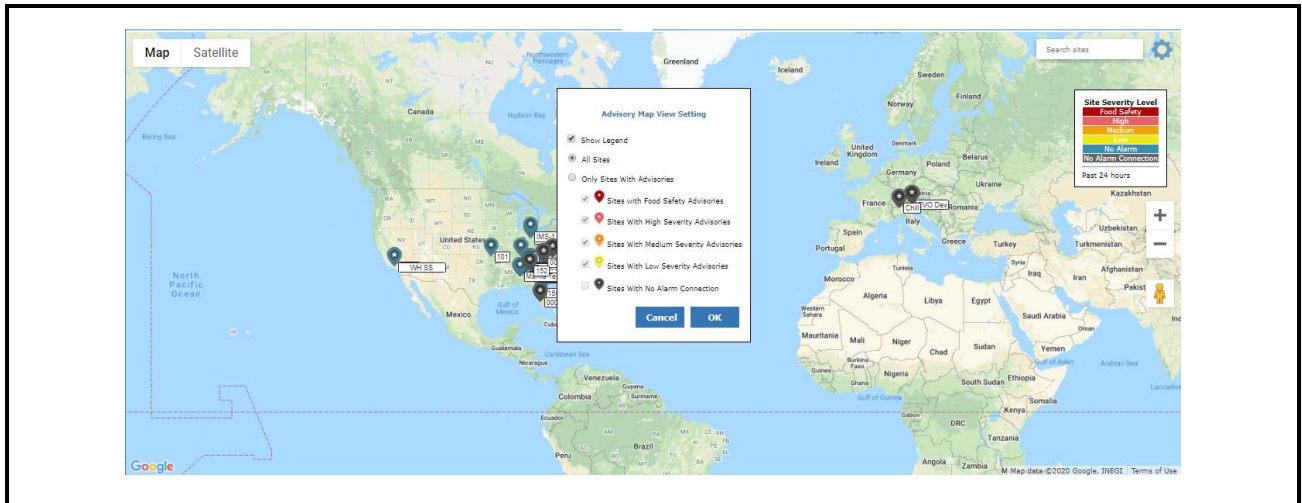


Figure 3-4 - Advisory Map Setting

1. **Map or Satellite View:** Allows you to switch Google Map View or satellite view. With satellite view, you can review a real time picture of your stores, see roof top units if available, and more.

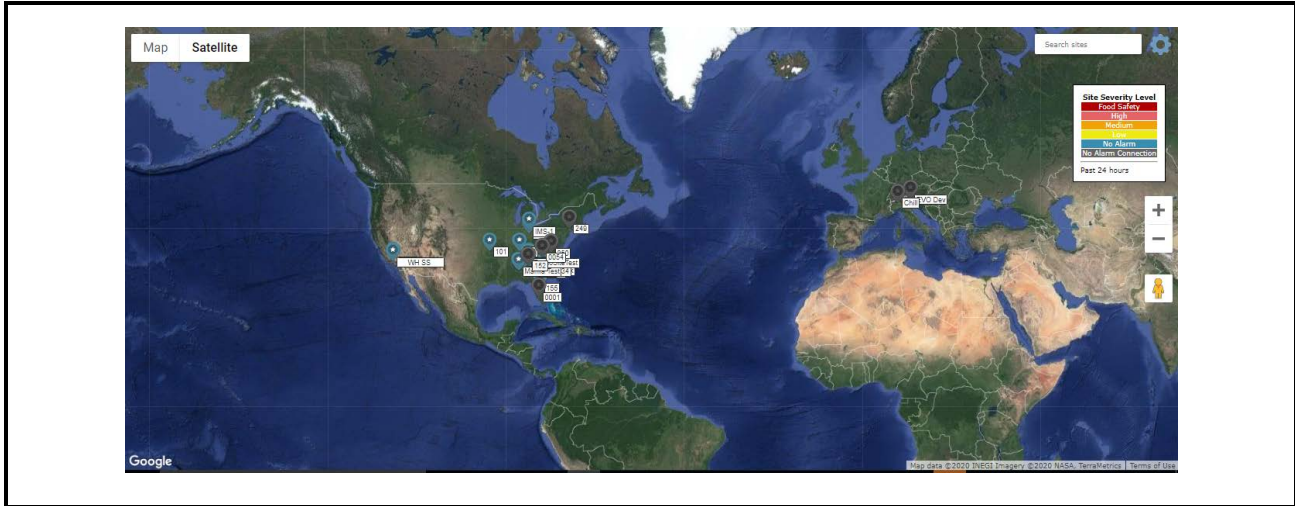


Figure 3-5 - Map or Satellite View

2. **Setting:** If you have a large number of stores, your Advisory Map may appear full. You can filter your stores in the Advisory Map to have focused views.

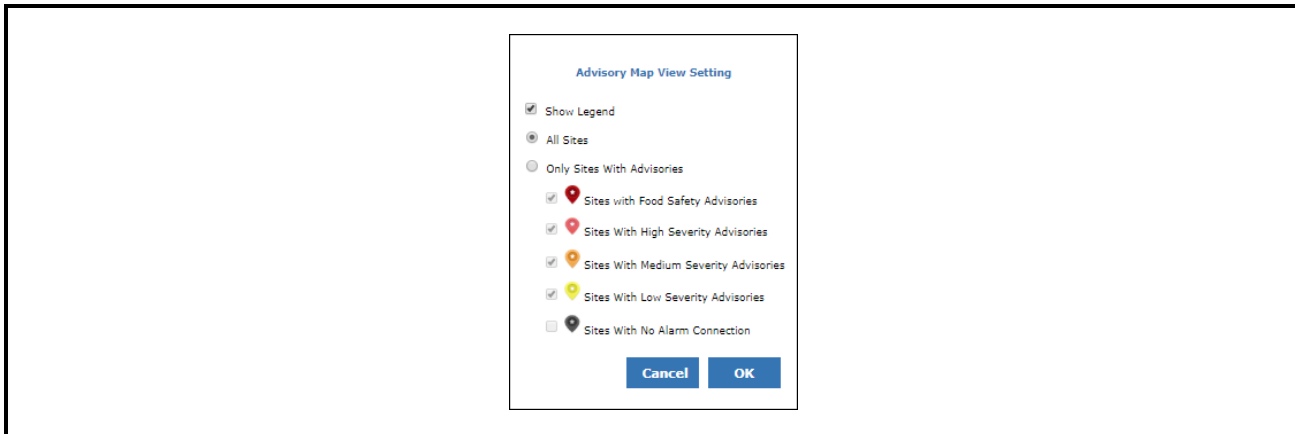


Figure 3-6 - Advisory Map View Setting

Once you click **OK**, your Advisory Map Preference will be saved. When you view the Directory Advisory Map again, it will only show the sites with your preferences.

3.2 Advisory View

The enterprise toolbar alarm icon provides a quick overview on **how many total active alarms you have across your stores in the past 24 hours**. Whenever there is new alarm received by Connect+, the number will add and flash for several seconds.



Figure 3-7 - Advisory View Legend

3.2.1 Advisory List View

You can access the **Advisory List View** when you click this tool bar. As Advisory Map View, the Advisory List View is organized by Advisory Urgency Level. Mouse over the **Urgency** button to see the definition of each urgency level.

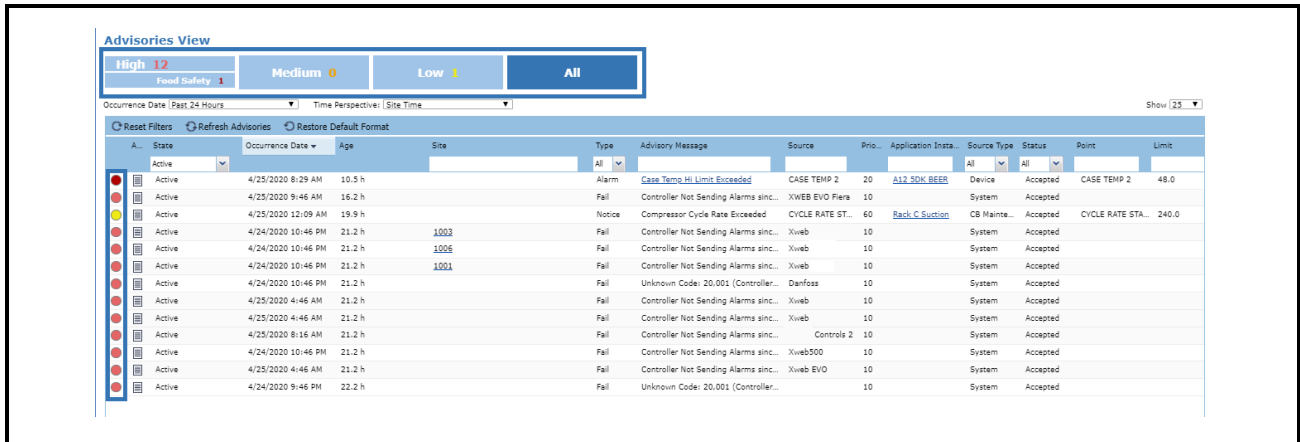


Figure 3-8 - Advisory List View

Column Name	Description
Occurrence Date	Shows the date and time when the advisory was generated on controller.
Received Date	Shows the date and time when the advisory was received in Connect+
Alarm Age	Shows advisory duration. <ul style="list-style-type: none"> If the advisory is still active, Alarm Age = Current Date time – Occurrence Date. If the advisory is return to normal, Alarm Age = Return to Normal Date – Occurrence Date.
RTN Date	Shows the date time when the advisory is back to normal.
Source	Shows controller, application, and property information from where the advisory was generated.
Source Type	Connect+ will also generate advisories in addition to controllers. Such as Controller Offline Alarm, Predictive Maintenance Alarm, and more. Source Type indicates if it is from the controller or Connect+ Apps.
Point	Shows the point from which the advisory was generated.
Limit	Shows the high or low limit the advisory will exceeded to generate the advisory. This is usually configured by your Technician during commissioning phase on the Controller.
Trip Value	Shows the point value when advisory is generated.
Advisory Message	Shows an explanation of the advisory. This is usually configured by your Technician during commissioning phase on the Controller.
Add Comment	Users can enter a comment for the selected advisory.
Comment	Shows the latest comment a user entered.
Type	Different controllers using different Type to categorize Alarm Severity. <ul style="list-style-type: none"> E2: Alarm, Fail & Notice for E2 Site Supervisor: Critical, Non-critical and Notice
Priorities	It shows urgency level of advisories as numerical (1-99). It is configurable in Controller

Table 3-3 - Advisory List

3.2.2 Read Alarm Related Log Graph

From Advisory List View, you can access the **Advisory Detail Information** and login to the controller if needed.

- Access Point Log Graph from Advisory Message link

From Advisory View, you can only see alarm-related points log graph. The same applies to log graph in advisory email. You can read multiple points Log Graph from Watch Points and Graphical Screens, which will be introduced in a later session.



Figure 3-9 - Log Graph

The information below will help you to read the Log Graph:

Item	Description
Log Graph Range	Set the time range of the data to show points logged in a graph.
Alarm Status	Shows advisory points and its related points value and alarm status.
Point Log	Shows advisory point and its related points log in graph.
Defrost Cycle	Shows defrost status in graph.
Setting	You can choose time perspective, download, print, and save log graph date range as default.

Table 3-4 - Reading the Log Graph

3.2.3 Other Quick Links

From Advisory List View, there are other quick links to:

- Access Site Home Screen from Site Link
- Access Controller Summary Screen from Unit Link
- Access Application Summary Screen from Application Type Link

3.2.4 Filter Advisory List View

Filter Advisory List by Urgency Level or Occurrence Time.

A...	State	Occurrence Date	Age	Site	Type	Advisory Message	Source	Pri...	Application Insta...	Source Type	Status	Point	Limit
●	Active	4/25/2020 8:29 AM	10.6 h		Alarm	Case Temp Hi Limit Exceeded		20	A12 SDK BEER	Device	Accepted	CASE TEMP 2	48.0
●	Active	4/25/2020 9:46 AM	16.3 h		Fail	Controller Not Sending Alarms sinc...		10		System	Accepted		
●	Active	4/24/2020 10:46 PM	21.3 h		Fail	Controller Not Sending Alarms sinc...		10		System	Accepted		
●	Active	4/24/2020 10:46 PM	21.3 h		Fail	Controller Not Sending Alarms sinc...		10		System	Accepted		
●	Active	4/24/2020 10:46 PM	21.3 h		Fail	Controller Not Sending Alarms sinc...		10		System	Accepted		
●	Active	4/24/2020 10:46 PM	21.3 h		Fail	Controller Not Sending Alarms sinc...		10		System	Accepted		
●	Active	4/25/2020 4:46 AM	21.3 h		Fail	Controller Not Sending Alarms sinc...		10		System	Accepted		
●	Active	4/25/2020 4:46 AM	21.3 h		Fail	Controller Not Sending Alarms sinc...		10		System	Accepted		
●	Active	4/25/2020 8:16 AM	21.3 h		Fail	Controller Not Sending Alarms sinc...		10		System	Accepted		
●	Active	4/24/2020 10:46 PM	21.3 h		Fail	Controller Not Sending Alarms sinc...		10		System	Accepted		
●	Active	4/25/2020 4:46 AM	21.3 h		Fail	Controller Not Sending Alarms sinc...		10		System	Accepted		
●	Active	4/24/2020 9:46 PM	22.3 h		Fail	Unknown Code: 20,001 (Controller...		10		System	Accepted		

Figure 3-10 - Filter Advisory List

Filter Advisories by Filed Filter. For example, if you enter “Case Temp” in the **Advisory Message** field, you will filter all the alarms with an advisory message that contains “Case Temp”.

A...	State	Occurrence Date	Age	Site	Type	Advisory Message	Source	Pri...	Application Insta...	Source Type	Status	Point	Limit
●	Active	4/25/2020 8:29 AM	10.7 h		Alarm	Case Temp Hi Limit Exceeded		20	A12 SDK BEER	Device	Accepted	CASE TEMP 2	48.0

Figure 3-11 - Filter Advisories

3.2.5 Customized Advisory List View

You can customize your Advisory List View by:

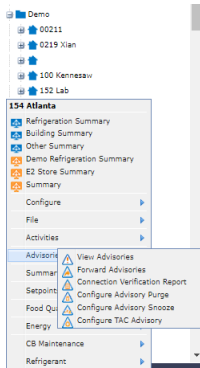
- Adding or removing more columns as indicated below.
- Dragging the column header to reorganize your field sequence.
- Clicking each column header to sort the list.

Your preferences will be saved for future viewing.

A...	State	Occurrence Date	Age	Site	Type	Advisory Message	Source	Pri...	Application Insta...	Source Type	Status	Point	Limit
●	Active	4/25/2020 8:29 AM	10.6 h		Alarm	Case Temp Hi Limit Exceeded		20	A12 SDK BEER	Device	Accepted	CASE TEMP 2	48.0
●	Active	4/25/2020 9:46 AM	16.3 h		Fail	Controller Not Sending Alarms sinc...		10		System	Accepted		
●	Active	4/24/2020 10:46 PM	21.3 h		Fail	Controller Not Sending Alarms sinc...		10		System	Accepted		
●	Active	4/24/2020 10:46 PM	21.3 h		Fail	Controller Not Sending Alarms sinc...		10		System	Accepted		
●	Active	4/24/2020 10:46 PM	21.3 h		Fail	Controller Not Sending Alarms sinc...		10		System	Accepted		
●	Active	4/24/2020 10:46 PM	21.3 h		Fail	Controller Not Sending Alarms sinc...		10		System	Accepted		
●	Active	4/25/2020 4:46 AM	21.3 h		Fail	Controller Not Sending Alarms sinc...		10		System	Accepted		
●	Active	4/25/2020 4:46 AM	21.3 h		Fail	Controller Not Sending Alarms sinc...		10		System	Accepted		
●	Active	4/25/2020 8:16 AM	21.3 h		Fail	Controller Not Sending Alarms sinc...		10		System	Accepted		
●	Active	4/24/2020 10:46 PM	21.3 h		Fail	Controller Not Sending Alarms sinc...		10		System	Accepted		
●	Active	4/25/2020 4:46 AM	21.3 h		Fail	Controller Not Sending Alarms sinc...		10		System	Accepted		
●	Active	4/24/2020 9:46 PM	22.3 h		Fail	Unknown Code: 20,001 (Controller...		10		System	Accepted		

Figure 3-12 - Advisory Manage

3.2.6 Access Advisory List View from Navigation Tree



You can also access Advisory View from all levels in the Navigation Tree by clicking **Right-click Menu > Advisories > View Advisories**.

This allows you additional flexibility to access advisories at a certain site, controller, device or a known point.

3.3 View and Process Live Advisories

3.3.1 View Live Advisory

If your organization does not enable Advisory Receiving in Connect+, then Live Advisories will be where your advisories can be reviewed. Connect+ will access the control system or controller to get Live Advisories on the controller when you click **Right-Click Menu > Advisories > View Live Advisories from Navigation Tree at Control System or Controller Level**.

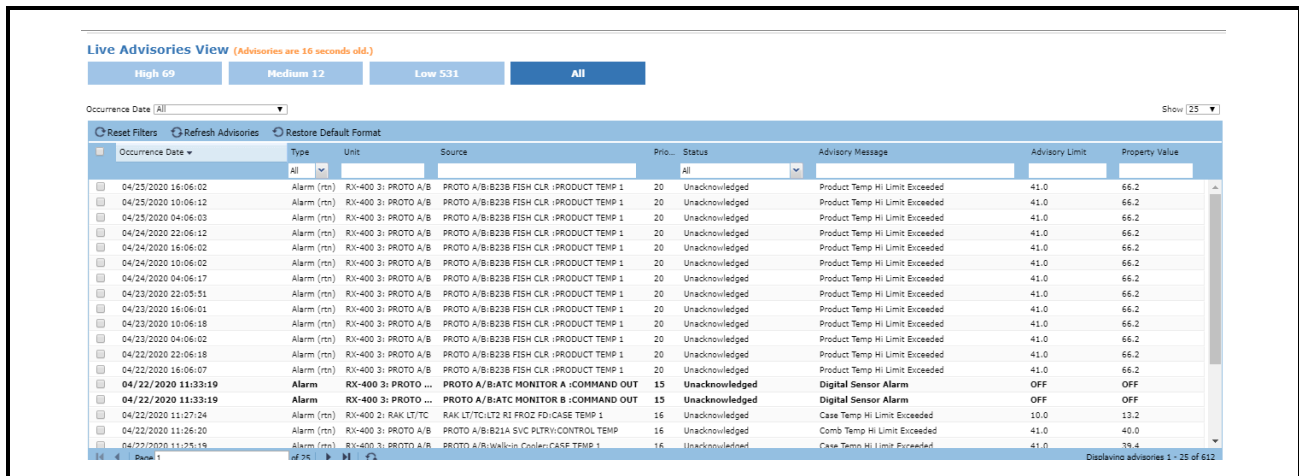


Figure 3-13 - Live Advisories View

Field Name	Description
Cleared Date	Shows the date time when advisory is cleared on controller.
Status	Shows whether the advisory has been Acknowledged, Unacknowledged, or Muted.

Table 3-5 - Live Advisories

When you select one advisory, you will see the option to view Expanded Info, or connect to Terminal Mode if you have the permission.

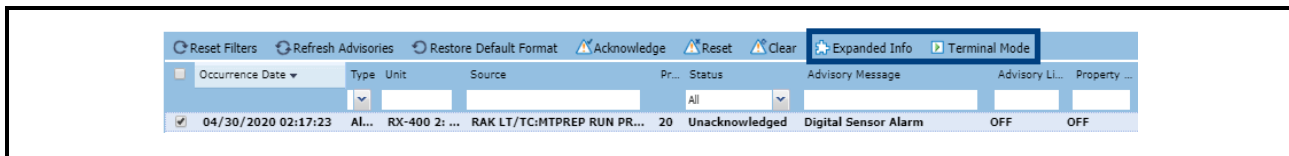


Figure 3-14 - Expanded Info or Terminal Mode

Click on Expanded Info, you will see the Advisory Details:

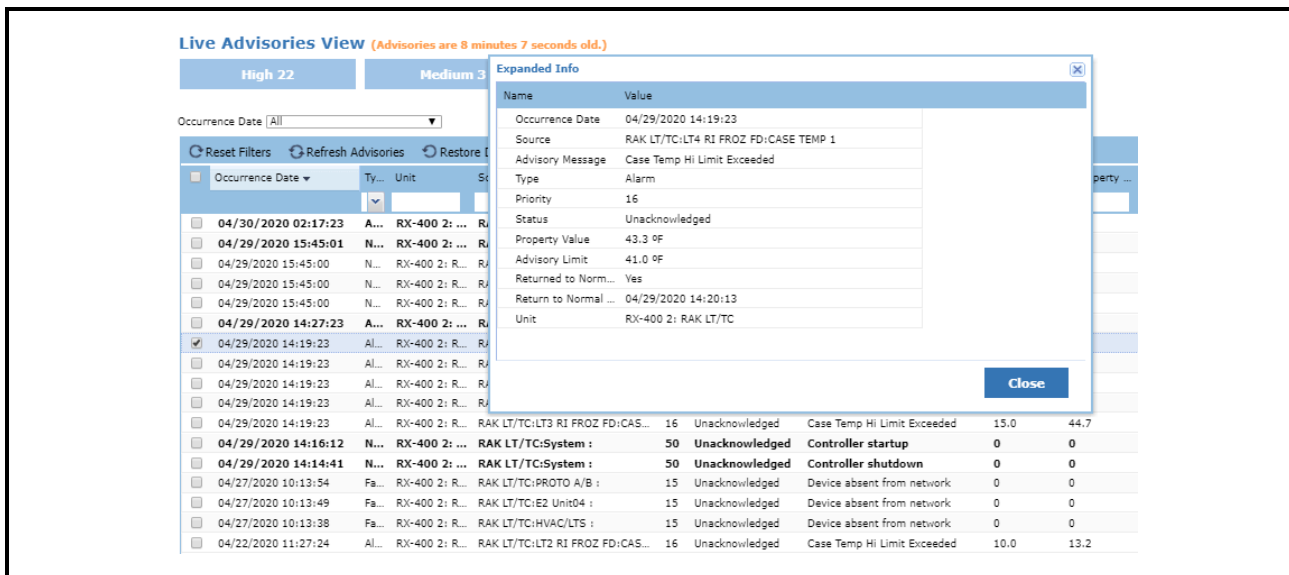


Figure 3-15 - Expanded Info

As an Advisory View, you can sort, filter and add more columns for your review. You can also export to Excel, PDF or HTML file types.

3.3.2 Process Live Advisories

When you select one or multiple live advisories, you will see three options to process live advisories as shown below: Acknowledge, Reset and Clear for E2 advisories:

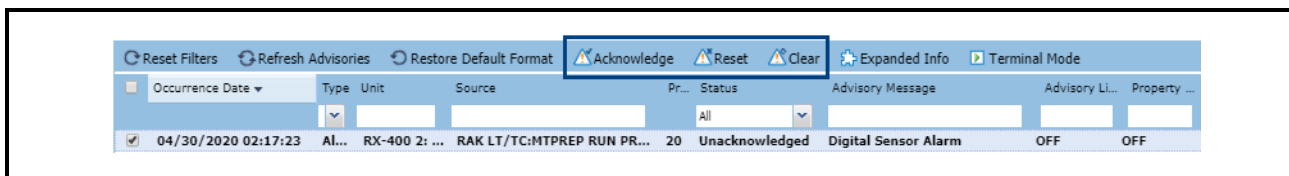


Figure 3-16 - Three Options

Acknowledge, Reset and Mute for Site Supervisor Advisories:

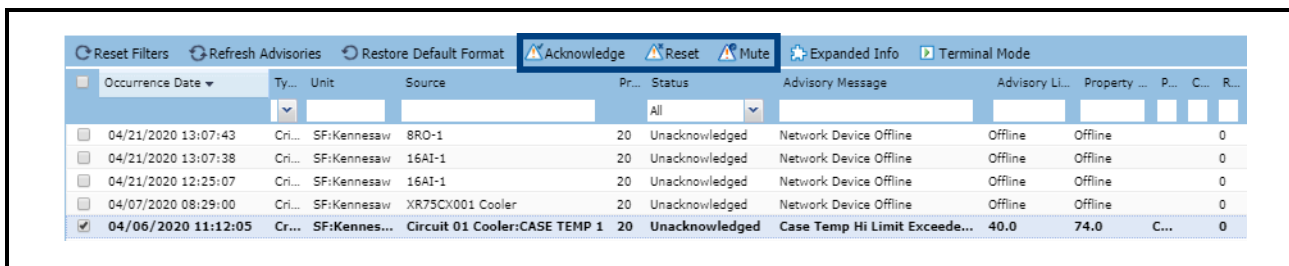


Figure 3-17 - Acknowledge, Reset and Mute

Acknowledge Advisories

When you acknowledge an Advisory, you prevent it from ever annunciating again in any way until you **manually** reset or clear the Advisory. A condition that causes an Advisory will never automatically return to normal when it is acknowledged. When an Advisory is **acknowledged**, the advisory stays in the controller Advisory Log, but all annunciation of the advisory is suspended until the alarm is reset or cleared.

Reset Advisories

When you reset an Advisory, you force the Advisory to a normal condition and the Advisory remains in the Controller Advisory Log. Currently Reset-To-Normal Alarms will not be marked as Return-To-Normal in Connect+.

Clear/Mute Advisories

The option to clear an advisory completely removes an advisory from the Controller Advisory Log.

TIPS: ACKNOWLEDGEMENT VS. RESETTING

- Reset an alarm if you believe the condition that caused it is fixed, but you wish for a new alarm to occur if the problem happens again.
- You **MUST** Reset an alarm that has been previously acknowledged to re-enable the alarm. Failure to do so will cause the alarm to remain in ACK, and the alarm will not be generated again. AN ACKNOWLEDGED ALARM WILL NOT AUTOMATICALLY RESET.
- Acknowledge an alarm to silence alarm panel horns or lights, ONLY IF technicians have been notified of the problem and have been dispatched. Technicians, after fixing the problem, **MUST** Reset or Clear the alarm to re-enable alarming.

4 View Sites Not Sending Alarms

You have seen many sites that are not sending alarms from the Advisory Map. Those sites are grayed out and flashing to bring attention to them. If you want to know how many sites are not sending alarms and more information, you can click on **Sites not Sending Alarms** icon on the enterprise toolbar.



Figure 4-1 - Site Not Sending Alarms Legend

You will see a list of sites that are not sending alarms in the Connection Verification Report.

Directory	Site	Control System	Test Connections Per Day	Number Of Missed Connections	Last Received Time	Next Received Time	Commissioned Time
Demo			2	2	2/18/20 1:57 PM	4/25/20 5:12 AM	10/23/19 4:52 PM
L				1	6/12/19 2:52 PM		4/9/19 6:12 PM
L				1	6/12/19 2:52 PM		5/17/18 1:14 PM
Asia Demo			1	1	5/8/19 3:29 PM	4/25/20 11:02 AM	4/8/19 10:55 AM
Demo			24	24	1/31/19 10:11 PM	4/24/20 8:07 PM	11/7/18 3:02 PM
L				1	12/6/18 8:51 AM		5/2/18 4:35 PM
Demo			1	1	7/2/18 7:37 AM	4/24/20 9:07 PM	6/15/18 9:40 AM
Demo				1			9/18/19 9:49 AM
Demo				1			11/29/18 3:46 AM
Demo				1			9/4/19 5:01 PM
Demo				1			3/3/20 7:03 AM
Asia Demo				1			4/2/19 1:24 PM
Scott				1			1/29/20 10:53 AM
Demo				1			10/18/19 2:20 AM
Demo				1			10/4/19 4:56 PM

Figure 4-2 - Connection Verification Report

Field Name	Description
Test Connections per Day	Shows the number of connection tests that occurred in the controller in the last 24 hours.
Number of Missed Connections	Shows the number of connection test missed in the controller in the last 24 hours.
Last Received Time	Shows the date and time when latest connection test or alarm was received.
Next Received Time	Shows the date and time when the next test connection will happen.
Commissioned Date	Shows the date and time when you configured to send advisory configuration information such as connection test time and advisory filter priorities for alarms, failures, and notices for E2 and Site Supervisor. And shows the first refresh unit date time as commissioned Date for XWEB and Danfoss.

Table 4-1- Connection Verification Report

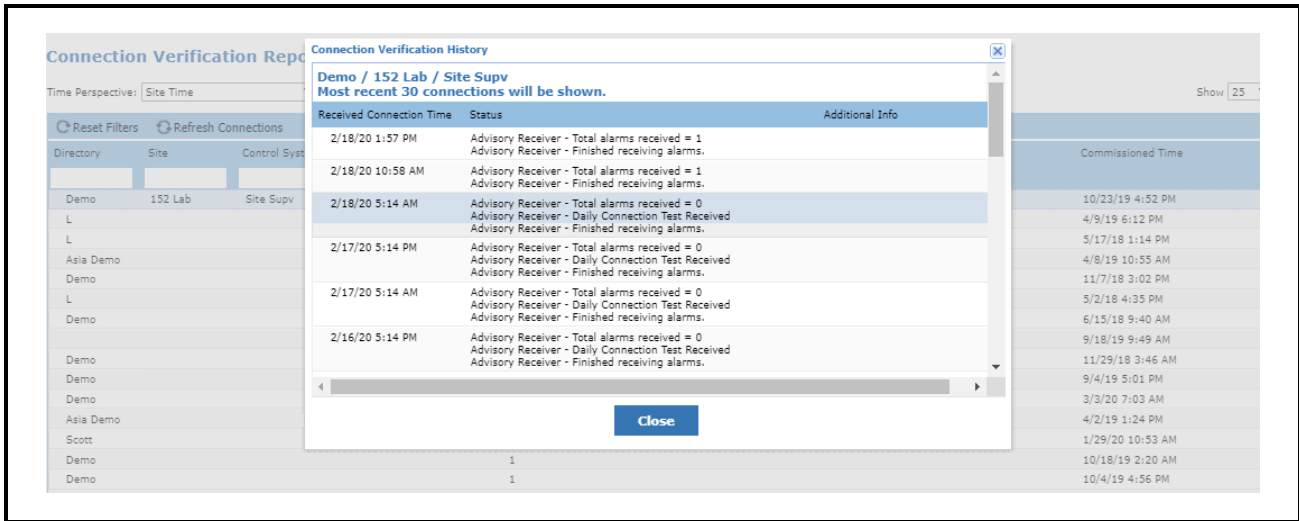


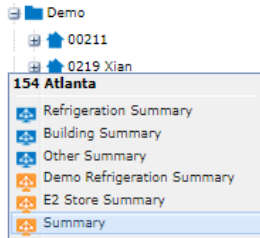
Figure 4-3 - Connection Verification History

As in the Advisory View, you can sort, filter and add more columns for your review. You can also export to Excel, PDF or HTML file types.

5 Monitor Site from Graphical Screens

5.1 Graphical Screen

As introduced in the What is Connect+ session, Graphical Screens are Floor Plans or Summary Screens for real time store monitoring. You can access these Graphical Screens from the Navigation Tree, when you right-click on any level, you will see a list of system screens indicated with a blue icon, and customized screens with an orange icon.



- **System Screens** are provided by Connect+ with predefined summaries at site, controller, application type and application level.
- **Customized Screens** can be developed by your Administrator or Emerson to facilitate your customized needs to monitor or compare store performance.

5.2 What You Can Do with Graphical Screens

You can right-click on Point Value and Override a Point, and also Display Log Graph, Real-Time Graph and view advisories for the point. You can also override a point from graphical screens. Note that you can only use the right-click menu in the **Point Value** field.

Unit	Suction Group	Suction	Suct SP	Suct Temp	Disch	Active Stages	Total Stages	% Cap	Status
No application instances of this type									
Unit	Enhanced Suct Grp	Suction	Suct SP	Suct Temp	Disch	Active Stages	Total Stages	% Cap	Status
RX-400 2: RAK LT/TC	RACK LT	17.0 PSI	15.0 PSI	NONE	0	4	2	100.0 %	OK
RX-400 2: RAK LT/TC	RACK TC	20.0 PSI	15.0 PSI	NONE	0	2	6	100.0 %	OK
RX-400 3: PROTO A/B	PROTOCOL A	54.0 PSI	50.0 PSI	NONE	0	6	6	100.0 %	OK
RX-400 3: PROTO A/B	PROTOCOL B	63.9 PSI	54.0 PSI	NONE	0	6	6	50.0 %	OK

Unit	Condenser	P Ctrl	P Set	PM	VS %	State
RX-300 4: E2 Unit04	CONDENSER	NONE PSI	200.0 PSI	??	??	Fan(s) On
RX-400 2: RAK LT/TC	CONDENSER LT	216.2 PSI	210.0 PSI	??	??	Fan(s) On
RX-400 2: RAK LT/TC	CONDENSER TC	172.4 PSI	180.0 PSI	??	??	Fan(s) On
RX-400 3: PROTO A/B	CONDENSER A	??	??	??	??	Fan(s) Off
RX-400 3: PROTO A/B	CONDENSER B	150.0 PSI	222.0 PSI	??	??	Fan(s) Off

Unit	Circuit (CC)	Alarm	State	Temp	Setpt
No application instances of this type					
Standard	Alarm	State	Temp	Setpt	
..	REFRIGERATION	-9.3 °F	-12.0 °F		
TD	REFRIGERATION	-1.4 °F	0.0 °F		
TD	REFRIGERATION	0.0 °F	0.0 °F		
TD	REFRIGERATION	-2.2 °F	0.0 °F		
TD	REFRIGERATION	-1.7 °F	0.0 °F		
MT	REFRIGERATION	1.0 °F	0.0 °F		
TD	REFRIGERATION	-0.5 °F	0.0 °F		
..	REFRIGERATION	-1.6 °F	-1.0 °F		
..	REFRIGERATION	0.1 °F	0.0 °F		
..	REFRIGERATION	25.0 °F	28.0 °F		
..	REFRIGERATION	-7.5 °F	0.0 °F		
..	REFRIGERATION	42.7 °F	50.0 °F		

Figure 5-1 - Refrigeration Summary

5.3 Override Point

You can override input points and output points from a graphical screen. When you right-click on point value, you will see **Override** in the right-click menu. To override, enable the **Override** check-box.

If you enter **Fixed** and a value, that point value would be overridden permanently until further changes are made.

Refrigeration Summary

Unit	Suction Group	Suction	Suct SP	Suct Temp	Disch	Active Stages	Total Stages	% Cap	Status
No application instances of this type									

Unit	Enhanced Suct Grp	Suction	Suct SP	Suct Temp	Disch	Active Stages	Total Stages	% Cap	Status
RX-400 2: RAK LT/TC	RACK LT	17.0 PSI	15.0 PSI	NONE °F	NONE PSI	4	4	100.0 %	OK
RX-400 2: RAK LT/TC	RACK TC	20.0 PSI	15.0 PSI	NONE °F	NONE PSI	2	2	100.0 %	OK
RX-400 3: PROTO A/B	PROTOCOL A	54.0 PSI	50.0 PSI	NONE °F	150.0 PSI	6	6	100.0 %	OK
RX-400 3: PROTO A/B	PROTOCOL B	59.5 PSI	54.0 PSI	NONE °F	NONE PSI	3	6	50.0 %	OK

Unit	Condenser	RPM	VS %	State
RX-300 4: E2 Unit04	CONDENSER	??	??	Fan(s) On
RX-400 2: RAK LT/TC	CONDENSER LT	??	??	Fan(s) On
RX-400 2: RAK LT/TC	CONDENSER TC	??	??	Fan(s) On
RX-400 3: PROTO A/B	CONDENSER A	??	??	Fan(s) Off
RX-400 3: PROTO A/B	CONDENSER B	??	??	Fan(s) Off

Unit	Circuit (CC)	Alarm	State	Temp
No application instances of this type				

Override

FILTERED PRES

Override

Type: **Fixed**

Value: 20.0

Pressure Per Square Inch

Note:

Cancel **Ok**

Unit	Standard Alarm	State	Temp Setpt
RX-400 2: RAK LT/TC LT3 RI FROZ FD	..	REFRIGERATION	-9.3 °F -12.0 °F
RX-400 2: RAK LT/TC LT3 RI FROZ FD	..	REFRIGERATION	0.4 °F 0.0 °F
RX-400 2: RAK LT/TC LT4 RI FROZ FD	..	REFRIGERATION	1.7 °F 0.0 °F
RX-400 2: RAK LT/TC LT4 RI FROZ FD	..	REFRIGERATION	1.0 °F 0.0 °F
RX-400 2: RAK LT/TC LT5 RI FROZ FD	..	REFRIGERATION	-1.5 °F 0.0 °F
RX-400 2: RAK LT/TC LT6 MD FROZ MT	..	REFRIGERATION	-1.0 °F 0.0 °F
RX-400 2: RAK LT/TC LT7 RI FROZ FD	..	REFRIGERATION	-0.2 °F 0.0 °F

Figure 5-2 - Fixed Override Point

If **Timed** is selected, you must enter a time in the field. A point value will be overridden for a time period as specified after you click **OK**. The point of Site Supervisor only supports the **Timed** override.

Refrigeration Summary

Unit	Suction Group	Suction	Suct SP	Suct Temp	Disch	Active Stages	Total Stages	% Cap	Status
No application instances of this type									

Unit	Enhanced Suct Grp	Suction	Suct SP	Suct Temp	Disch	Active Stages	Total Stages	% Cap	Status
RX-400 2: RAK LT/TC	RACK LT	17.0 PSI	15.0 PSI	NONE °F	NONE PSI	4	4	100.0 %	OK
RX-400 2: RAK LT/TC	RACK TC	20.0 PSI	15.0 PSI	NONE °F	NONE PSI	2	2	100.0 %	OK
RX-400 3: PROTO A/B	PROTOCOL A	54.0 PSI	50.0 PSI	NONE °F	150.0 PSI	6	6	100.0 %	OK
RX-400 3: PROTO A/B	PROTOCOL B	59.5 PSI	54.0 PSI	NONE °F	NONE PSI	4	6	65.7 %	OK

Unit	Condenser	RPM	VS %	State
RX-300 4: E2 Unit04	CONDENSER	??	??	Fan(s) On
RX-400 2: RAK LT/TC	CONDENSER LT	??	??	Fan(s) On
RX-400 2: RAK LT/TC	CONDENSER TC	??	??	Fan(s) On
RX-400 3: PROTO A/B	CONDENSER A	??	??	Fan(s) Off
RX-400 3: PROTO A/B	CONDENSER B	??	??	Fan(s) Off

Unit	Circuit (CC)	Alarm	State	Temp
No application instances of this type				

Override

FILTERED PRES

Override

Type: **Timed**

Time: 0:00:00

Value: 20.0

Pressure Per Square Inch

Note:

Cancel **Ok**

Unit	Standard Alarm	State	Temp Setpt
RX-400 2: RAK LT/TC LT3 RI FROZ FD	..	REFRIGERATION	-9.3 °F -12.0 °F
RX-400 2: RAK LT/TC LT3 RI FROZ FD	..	REFRIGERATION	-1.4 °F 0.0 °F
RX-400 2: RAK LT/TC LT4 RI FROZ FD	..	REFRIGERATION	-1.0 °F 0.0 °F
RX-400 2: RAK LT/TC LT4 RI FROZ FD	..	REFRIGERATION	3.3 °F 0.0 °F
RX-400 2: RAK LT/TC LT5 RI FROZ FD	..	REFRIGERATION	-1.5 °F 0.0 °F
RX-400 2: RAK LT/TC LT6 MD FROZ MT	..	REFRIGERATION	1.3 °F 0.0 °F
RX-400 2: RAK LT/TC LT7 RI FROZ FD	..	REFRIGERATION	1.0 °F 0.0 °F
RX-400 2: RAK LT/TC LT8A DT MEAT	..	REFRIGERATION	-2.4 °F -1.0 °F
RX-400 2: RAK LT/TC LT8B DT MEAT	..	REFRIGERATION	-1.7 °F 0.0 °F
RX-400 2: RAK LT/TC LT8C DT MEAT	..	REFRIGERATION	27.2 °F 28.0 °F
RX-400 2: RAK LT/TC LT9 SEAFO FRZR	..	REFRIGERATION	-7.5 °F 0.0 °F
RX-400 2: RAK LT/TC MEAT PREP 30	..	REFRIGERATION	43.5 °F 50.0 °F

Figure 5-3 - Timed Override Point

You can also override a point from the Navigation Tree or Watch Point List (covered in next section):

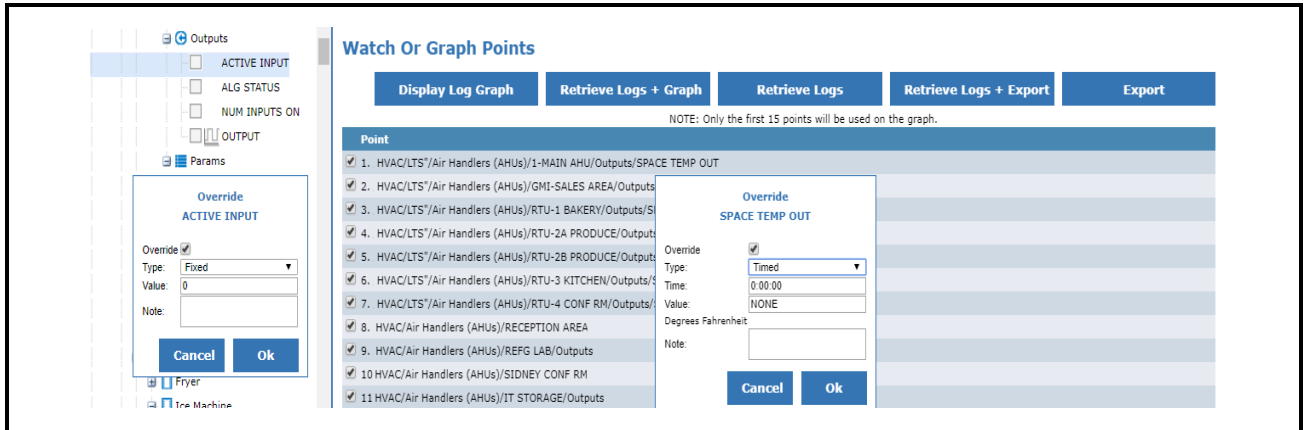


Figure 5-4 - Watch or Graph Points

5.4 Modify Points

You can modify parameter points from a Graphical Screen.

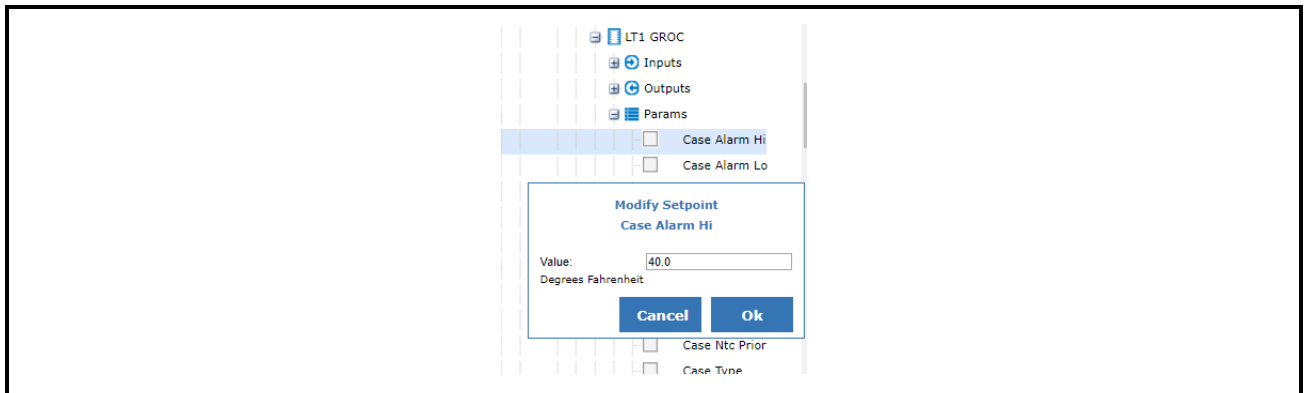


Figure 5-5 - Modify Parameter Points

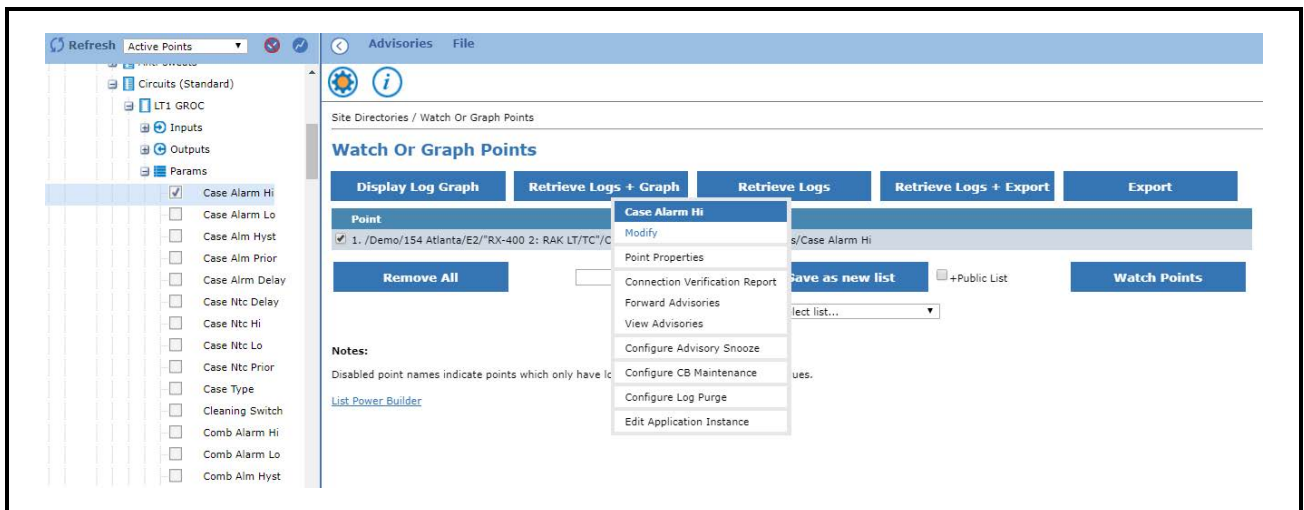


Figure 5-6 - Case Alm Hi

5.4.1 View Real Time Graph

While you can view point log graphs from the Advisory View, Advisory Email, Watch Points, and Graphical Screens, you can only view point real time graphs from graphical screens.

The Real Time Graph allows you to watch the point value change in real time for different time intervals from five (5) minutes up to one (1) hour. You can also add more points from the graphical screen to the real time graph by right-clicking the point value. The point path will be displayed in the real time graph.

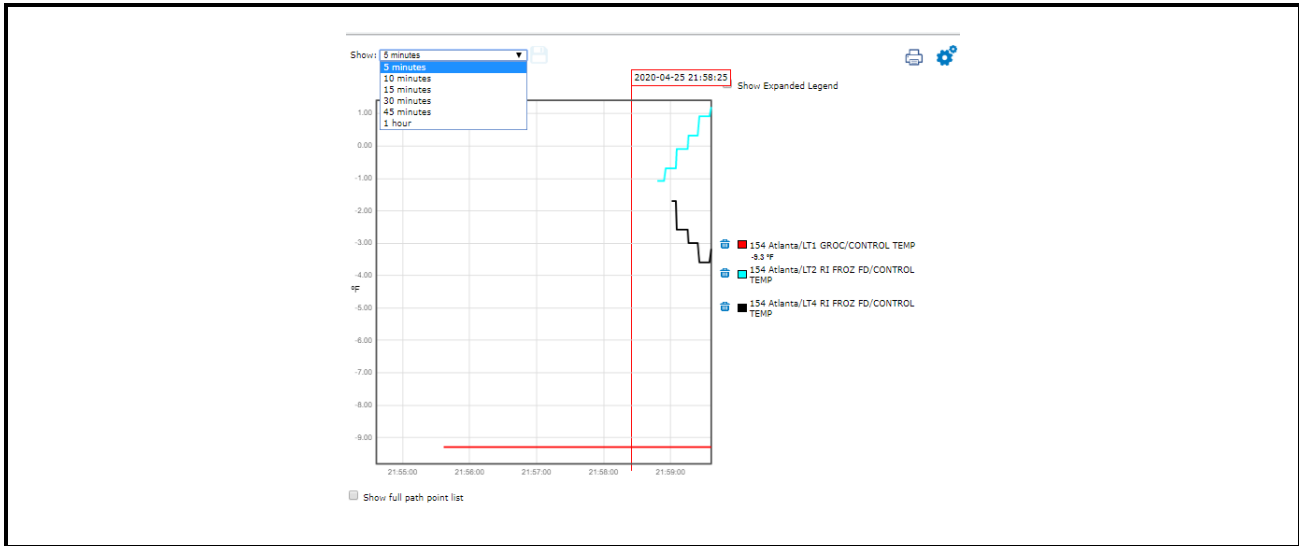


Figure 5-7 - Real Time Graph

5.5 System Summary Screen

Tree Level	Name	Description
Site	Refrigeration Summary	Include critical points from Suction Group, Condenser, and Case Controllers
	Building Summary	Include critical points from Outside/Inside Temp and Humidity, AHU Temp and Status, Lighting Status and Schedules
	Other Summary	Include critical points from Anti-Sweat, Demand Control, Power Channel, Analog Sensor, and Digital Sensor

Table 5-1 - System Summary Screen

Tree Level	Name	Description
Unit	Controller Summary	Sites that usually have multiple controllers: <ul style="list-style-type: none"> • Building Controller Summary is a subset of Site Building Summary for that specific controller. • Ref Controller Summary is a subset of Site REF Summary for that specific controller.
App Type	Summary	Include critical points for the below Application Types: Circuits and other Case Controllers, Condenser, Suction Group, Physical AI/DI/DO, Sensor Control AV/DV, HVAC Zone, Lighting Control, Power Monitoring, Anti-Sweat, Analog Combiner, Digital Combiner, Flexible Combiner, and more.
	Defrost Summary	Only applies to Case Controller Application Types
App Ins	Status	Include critical input, setpoint and output points properties for application instance. Only Application Instance from an Application Type that has Summary Screen will have Status Screen. (See App Type->Summary)
	Graphical Summary	Can be found in Application Instances from AHU, Condenser, Circuits, Suction Group, Sensor AV/DV for graphical presentation of the physical device.

Table 5-1 - System Summary Screen

How to Read Summary Screens

Each Summary comprise several tables. Table header is defined as:

Unit	"Application Type Name"	"Point Name"	"Point Name"	"Point Name"
"Controller Name"	"App. Instance Name"	Point Value	Point Value	Point Value

As you can see from the example below, each table header has **Unit** as fixed header, with different Application Types such as Enhanced Suction Group, Condenser, Circuit (CC) and Circuit (Standard). For each Application Type, point is also different.

The screenshot displays several summary tables. The top table is titled 'Enhanced Suct Grp' and has columns: Unit, Enhanced Suct Grp, Suction, Suct SP, Suct Temp, Disch, Active Stages, Total Stages, % Cap, and Status. It lists data for units RX-400 2 and RX-400 3. A red arrow points to a 'NONE' value in the Suct Temp column, labeled 'Alarming!'.

Below it is a table titled 'Controller Name/App. Ins. Name' with columns: Unit, Condenser, P Ctrl, P Setpt, T Setpt, T Ctrl, VS RPM, VS %, and State. It lists data for units RX-300 4, RX-400 2, RX-400 3, and RX-400 4.

At the bottom left is a 'Summary Table Header' with columns: Unit, Circuit (CC), Alarm, State, Temp, and Setpt. It shows 'No application instances of this type'.

At the bottom right is a 'Unit/Application Type Name' table with columns: Unit, Circuit (Standard), Alarm, State, Temp, and Setpt. It lists various refrigeration units and their setpoints.

Figure 5-8 - Read Summary Screens

5.6 View Customized Screens

Your organization Admin, Service Provider, or Emerson Project Team might have developed customized screens to match your requirements. Connect+ Graphical Screen Tools provide different image libraries and widgets to allow vivid visual presentations of your store to be created.

You can view store floor plans as indicated below, or pull data from several stores to compare Food Safety Setpoints. Talk to your Admin, Service Provider, or Emerson Project Team about what is right for you. You can set customized screens as a Homepage or Site Homepage for quicker access.



Figure 5-9 - Customized Screen

6 Watch and Graph Points

6.1 Watch Points

When you click the Watch Points icon, you will be directed to Watch or the Graph Points page.

Watch Or Graph Points

Select points to watch or graph by using the checkboxes in the tree.

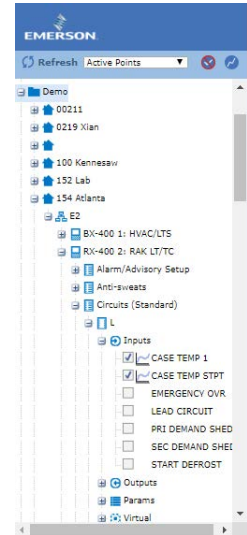
Load Selection from list

Notes:

Disabled point names indicate points which only have logs and cannot retrieve real time values.

[List Power Builder](#)

You can select points to watch or graph using the check-boxes in the tree. Or load points from a list.



Select Points to Watch From the Tree

Load Points From a List

Watch Or Graph Points

Select points to watch or graph by using the checkboxes in the tree.

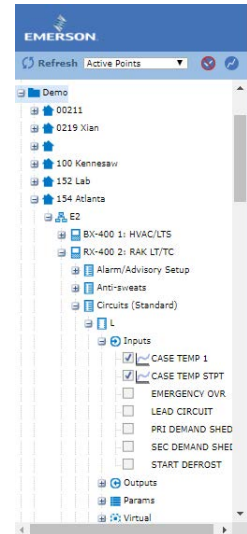
Load Selection from list

AHU List
REF Points

Notes:

Disabled point names indicate points which only have logs and cannot retrieve real time values.

[List Power Builder](#)



In the example below many points are contained in the review area. Click **Watch Points** at the bottom right corner.

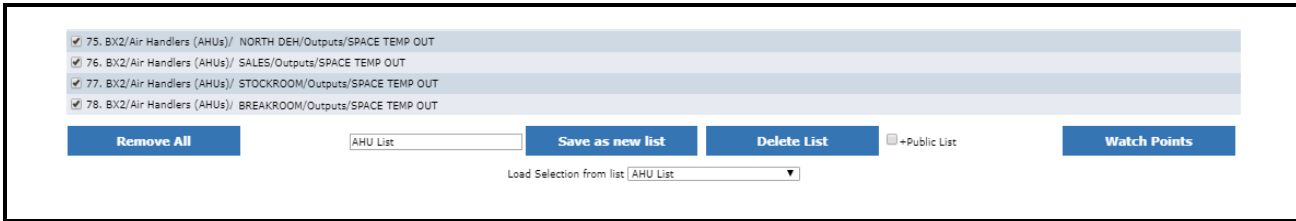


Figure 6-1 - Click on Watch Points

Wait several seconds for Connect+ to establish the real time communication to your controllers. You will see the value change from “?” to meaningful values.

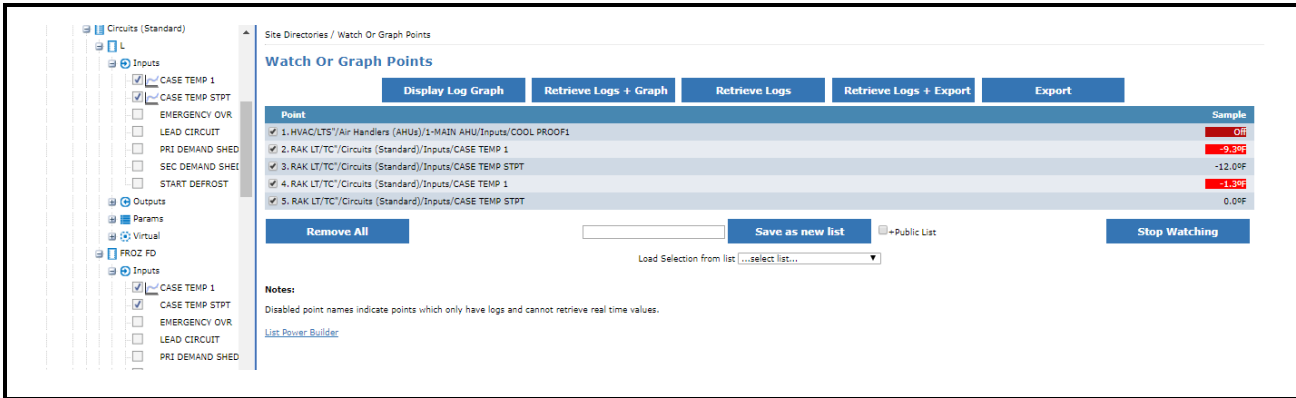


Figure 6-2 - Click on Watch Points

6.2 What Else You Can Do With These Points

In the Watch or Graph Points Page, besides the Watch Points’ real value, you can also:

- Display Log Graph, Retrieve Logs and Export for multiple points selected.
- Right-click on each point to access Display Point Graph, Real Time Graph, and View Advisories.

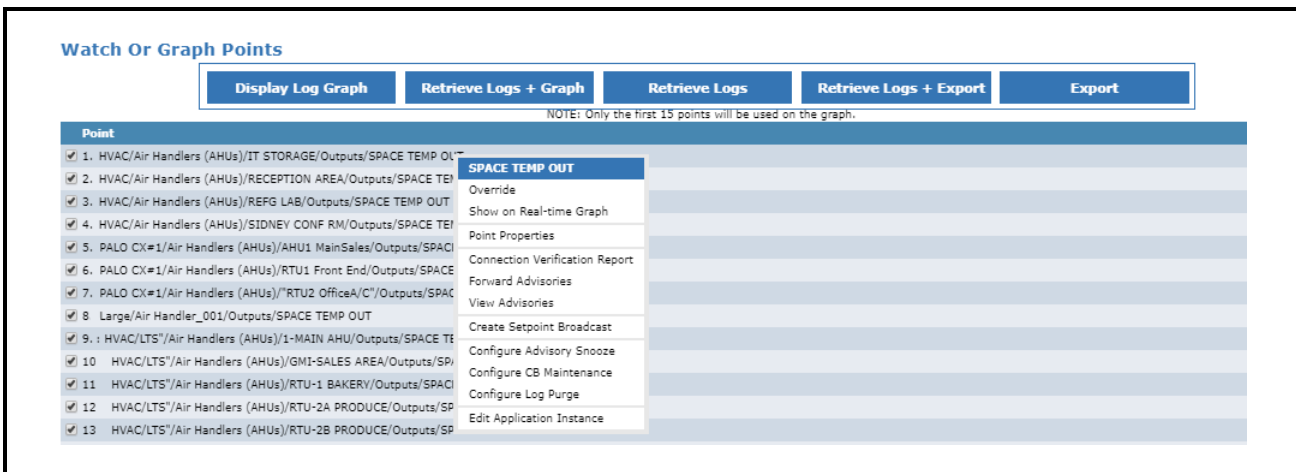


Figure 6-3 - Other Points

6.2.1 Display Log Graph

We have introduced how to read log graph in the Advisory View session. You can also choose to **Display Log Graph** from Watch Points.

- If you want to see an alarming point's log graph, right-click on the point name and choose **Display Log Graph**. The log graph you see is the same as the one you see from the Advisory View.
- If you want to see multiple points' log graph, just click **Display Log Graph**, all selected points' log graph would be shown for the same time period.



Figure 6-4 - Display Log Graph

6.2.2 Retrieve Logs

If the points you selected do not have logs retrieved, consider retrieving logs first and then displaying the log graph.

When you Retrieve Logs, Connect+ will display the Activity progress:

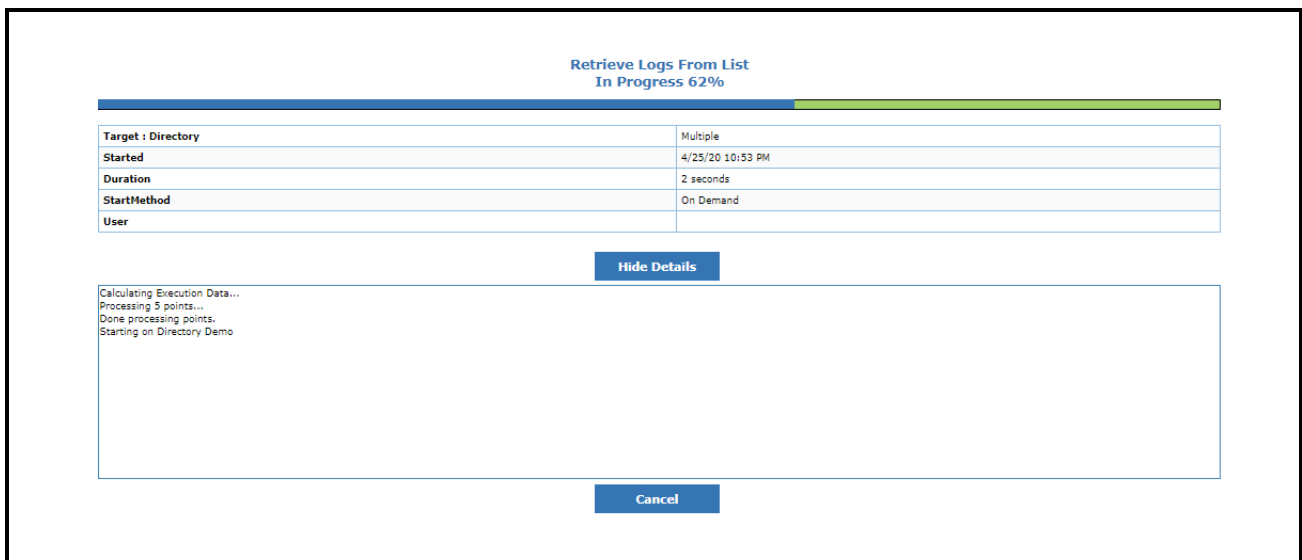


Figure 6-5 - Retrieve Logs

Upon completion, you can go to the **Header Menu > Activities > View My Activity History** to check the Retrieve Logs status.

Activity	Started	Duration	Target	Result	Exceptions Report
Retrieve Logs From List	4/25/20 8:25 PM	00:00:03	Multiple	Completed	
Retrieve Logs From List	4/25/20 8:24 PM	00:00:02	Multiple	Completed	

Figure 6-6 - Retrieve Logs

6.2.3 Export

You may also want to export log data for these points. Click **Export**, fill the time range and click **Go**. Export will be in progress. Upon completion, an Excel file will be downloaded to your computer.

From: 2020-04-24 00:00:00 To: 2020-04-26 23:59:59 Time Perspective: Site Time File Type: Comprehensive **Go**

Figure 6-6 - Export

7 Access Control

Monitoring your store from an Advisory Map, Graphical Screen, or Watch Point Lists may not always be sufficient. Connect+ allows you to connect to your controller remotely to access the controller to change settings or get more information.

7.1 Terminal Mode

You can remote login to Terminal Mode. You can access Terminal Mode from two places: Right-click menu at the controller level or from the Advisory View controller link.

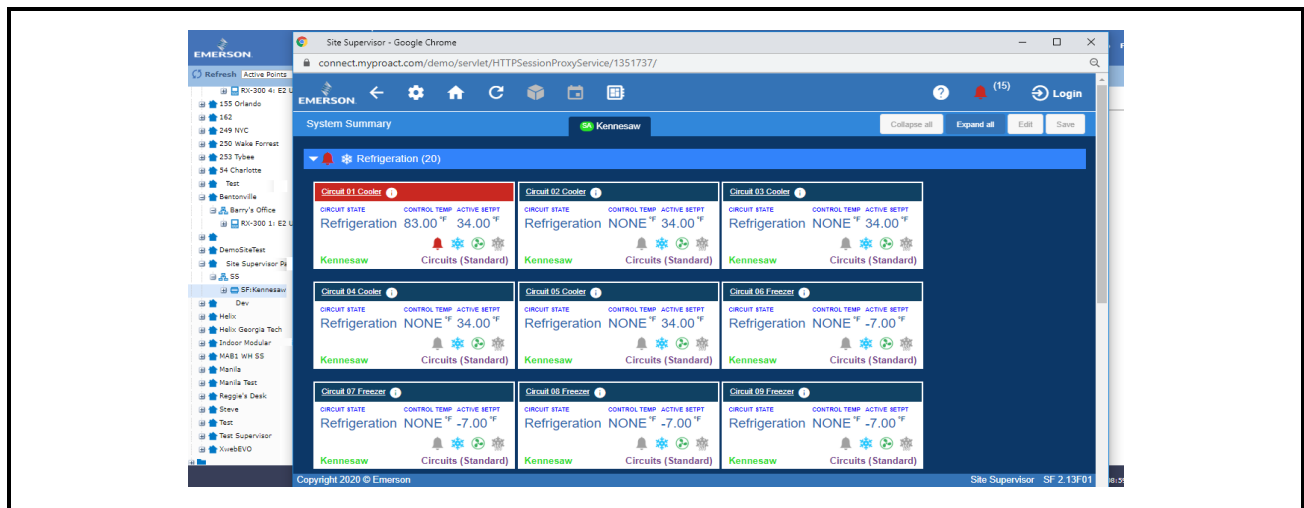


Figure 7-1 - Terminal Mode

7.2 Controller Logs & Stats

You can also view Controller Logs & Status from the right-click menu at the controller level. Below is a list of Controller Logs & Status Reports you can view directly from Connect+:

- Monitor Master
- Monitory Relay
- Check Status Usage
- Communication Statistics
- Schedule Statistics
- CPU Usage Report
- Description File Report
- Free Memory and Disk Space
- License Report
- System Logging Report
- Task Details Report
- Task Statistics
- Assertion Log
- Exception Log
- Maintenance Log
- Monitoring Connection Log
- Monitoring Log
- Monitoring Pending Log
- Override Log
- RMS Log
- Service Log
- Stpt Change Log
- System Update Log
- User Access Log

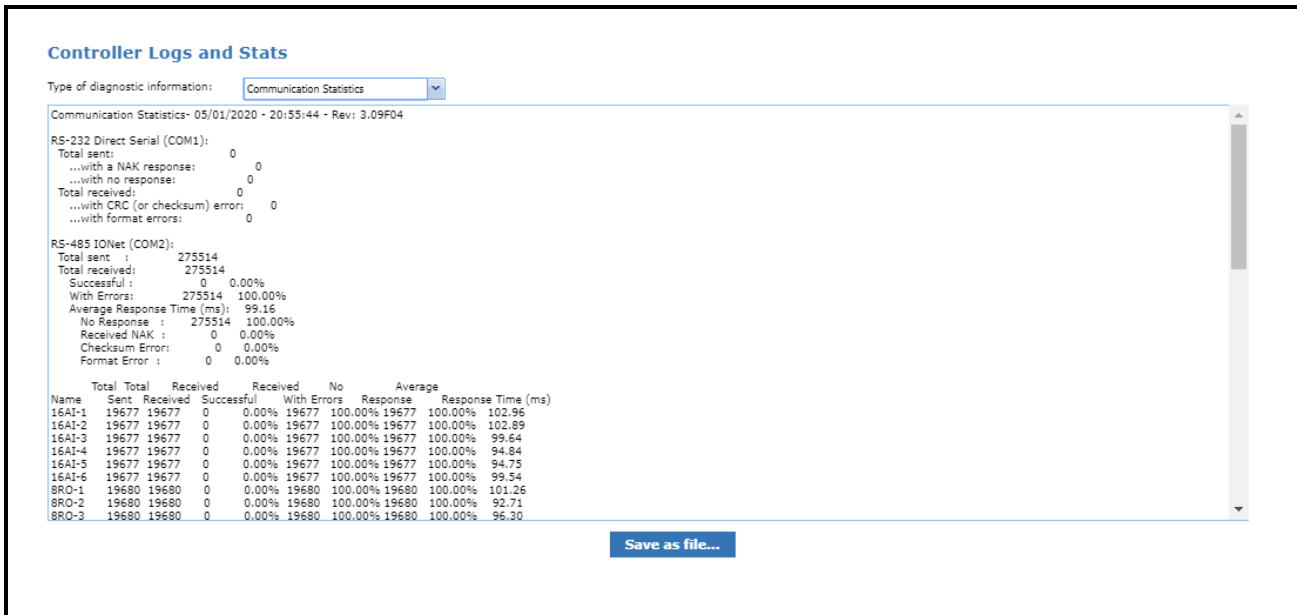


Figure 7-2 - Controller Logs and Stats

7.3 Network Status

You can view Network Status from the right-click menu on both the Control System and Unit levels. Network Status provides real time controller/device connectivity. You can view if a controller or a device is online or offline from Network Status screen.

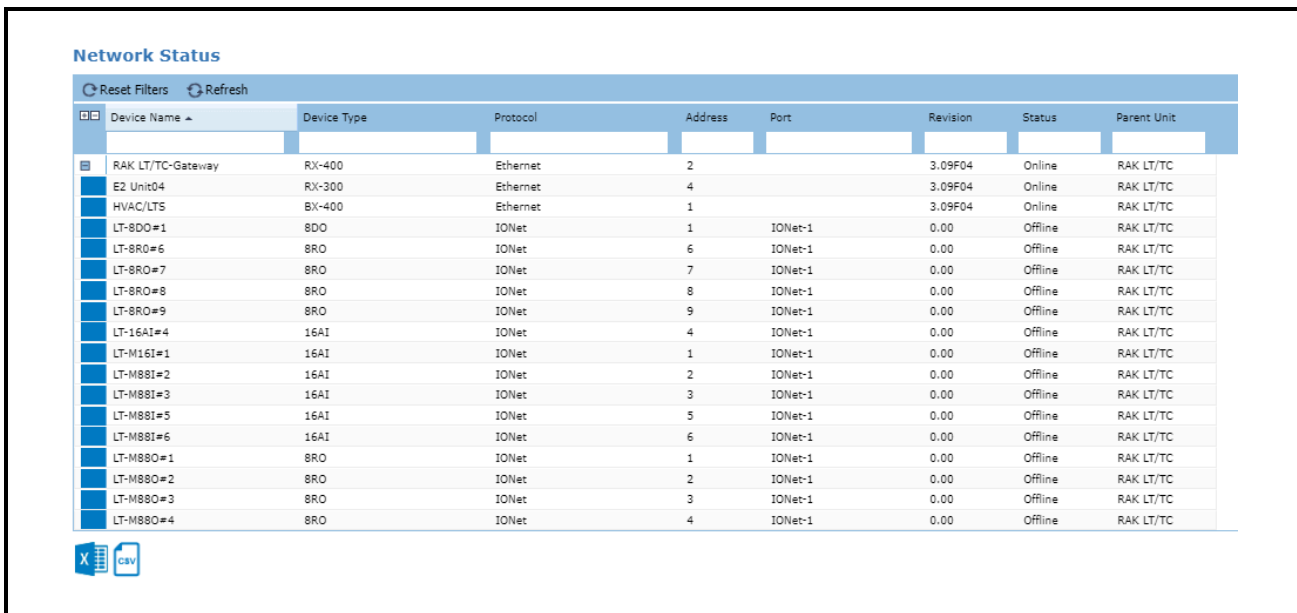


Figure 7-3 - Network Status

8 Controller Activity

We have covered Point Level Activities such as Override/Modify, Display Log Graph, Real Time Graph in Advisory, Graphical Screen & Watch Point Session. This session will cover Controller Activities from the Navigation Tree right-click menu.

8.1 Manual Defrost

Manual Defrost allows users to start a defrost for a freezer or refrigerated case that is outside its normal scheduled routine. Manual Defrost is available only for supported controllers (E2 and Site Supervisor) and applications (Standard Circuits, Case Control Circuits, XM Circuits and MultiFlex CUB).

To start a manual defrost, right-click the application instance (circuit) where the freezer or refrigerated case to be defrosted is associated, and click **Manual Defrost**.

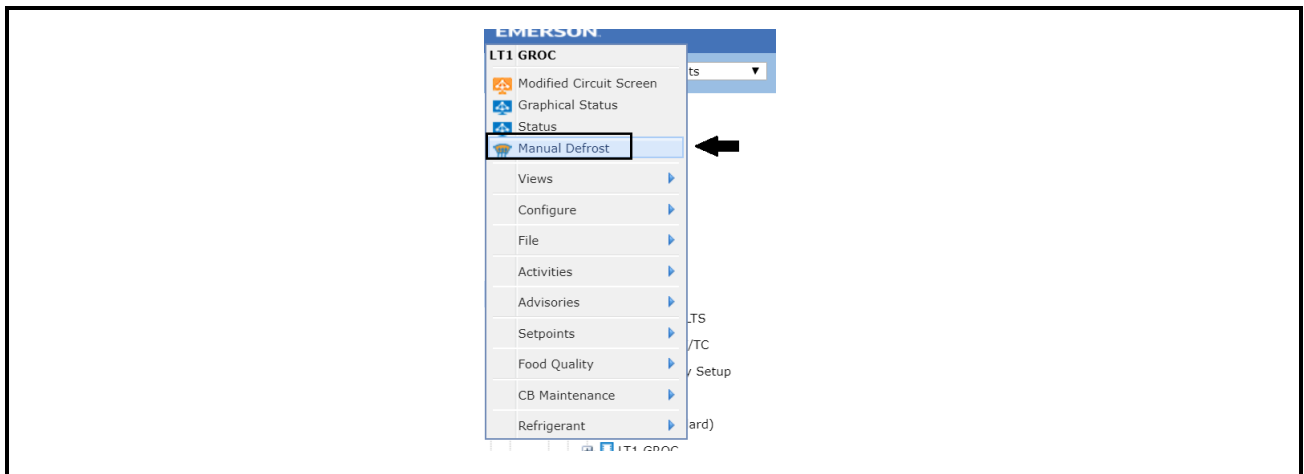


Figure 8-1 - Manual Defrost

The **Manual Defrost** box will appear with the name of the application instance displayed.

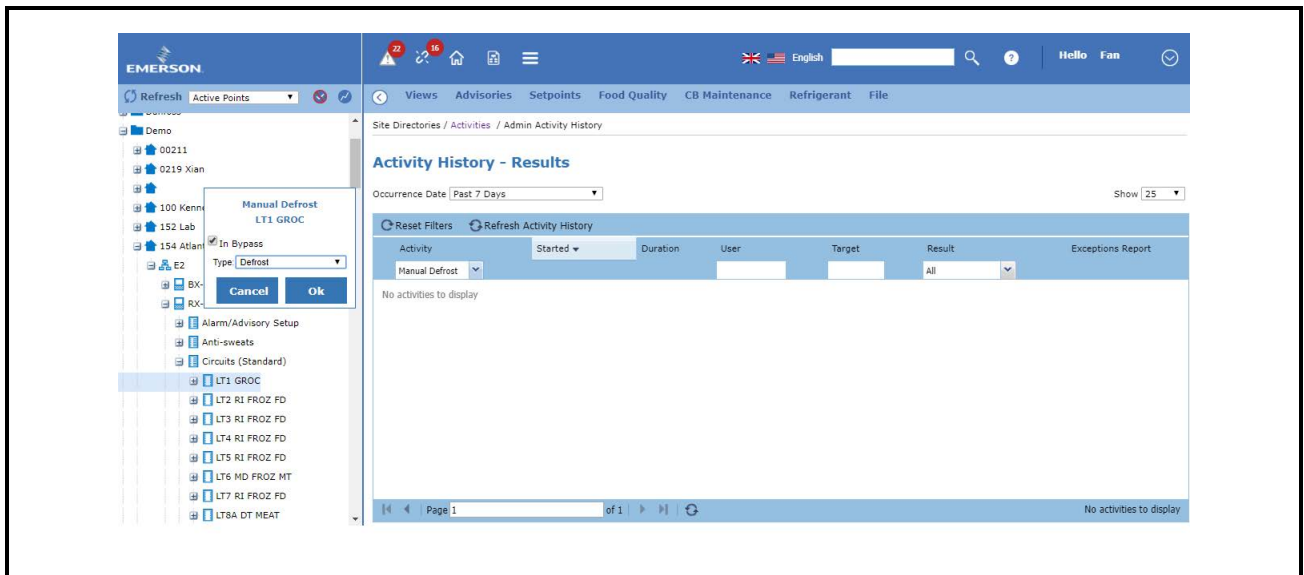


Figure 8-2 - Manual Defrost with Application Name

Once set, the manual defrost command is sent to the controller. Details of the Manual Defrost activity (whether Completed or Failed) will be recorded in the Activity History page.

Activity	Started	Duration	User	Target	Result	Exceptions Report
Manual Defrost	5/3/20 10:10 AM	00:00:01	Fan	LT1_GROC	Completed	
Get Manual Defrost Types	5/3/20 10:07 AM	00:00:00	Fan	LT1_GROC	Completed	

Figure 8-3 - Activity History Results

When **Bypass** is selected, a drop-down list appears and contains different types of Manual Defrost to choose from:

- Defrost - Puts the unit in its normal defrost routine.
- Emergency Defrost - Begins defrosting immediately. This event continues until the bypass is removed.
- Start Cleaning - Starts the clean or wash mode. Refrigeration cycle ends without any defrost action. The normal time programmed for cleaning mode also applies.
- Refrigeration Override - Appears only if the Application Instance is a MultiFlex CUB application.

A message displays if the Application Instance on which Manual Defrost is being run does not have data in the database. In this case, run a Refresh Point List first and configure the manual defrost again. See the *Refresh Point List section on page 39*.

8.1.1 Refresh Controller & Application

Obtain Controller Information

The Obtain Controller Information activity connects to a given Control System, refreshes the Unit list, refreshes the Application List for each Unit, and refreshes the points for any Application Instances that have “out of date” points, which means the point list will be retrieved for any applications that have never had a point list retrieved, and also for any applications that have changed since the last time the point list information was checked.

Obtain Controller Information will need to be run (or equivalent operation) for Connect+ to display the current information in the controller and synchronize the updates from the controller configuration and the GS Screen. Note that if the configuration of the controller changes while a

GS Screen is being viewed, the system will not pick up configuration changes between the time the application data inventory is being received.

Refresh Unit

Refresh units is an activity that may be performed at the control system level. When a Refresh Units is performed, information is pulled from the controller and is posted to Connect+.

Right-click on the desired Control System from the main Navigation Tree to bring up the pop-up menu and select Refresh Units. Once this activity has been triggered, the Activity Status page will be displayed.

Refresh Application

Right-click on the desired unit from the main Navigation Tree to bring up the pop-up menu and select **Refresh Applications**. Once this activity has been triggered, the Activity Status page will be displayed.

When the activity has completed successfully, the changes, if any, will be evident automatically on the Navigation Tree under the selected unit or click the **Refresh** button in the navigation frame.

Refresh Point List

Refresh Point List is an activity that may be performed only at the Application Type and Application Instance levels on the Navigation Tree. When a Refresh Point List is performed, information is pulled from the controller and is posted to the database.

Right-click the desired application type or instance from the main navigation tree to bring up the pop-up menu and select **Refresh Point List**. Once this activity has been triggered, the Activity Status page will be displayed.

When the activity has completed successfully, the changes, if any, will be evident automatically on the Navigation Tree under the selected application or click the **Refresh** button in the navigation frame.

8.2 Schedule Controller Activity

When you perform an activity from the Navigation Tree/Graphical Screen/Watch Point right-click menu, you start a **Run Once** activity. You can also schedule a recurring controller activity from the top **Header Menu > Activity**. You can add a new Schedule by accessing **Schedule Manager > Add New**.

8.2.1 Add a New Schedule

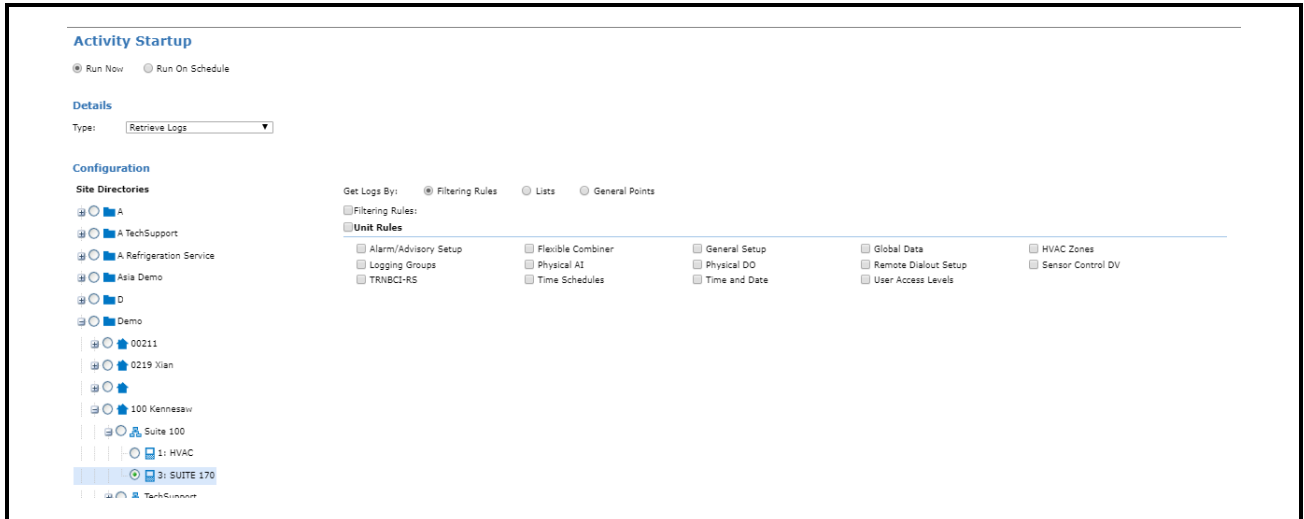


Figure 8-4 - Add a New Schedule

When adding a new schedule, you can choose **Run Now**. The activity would just run once.

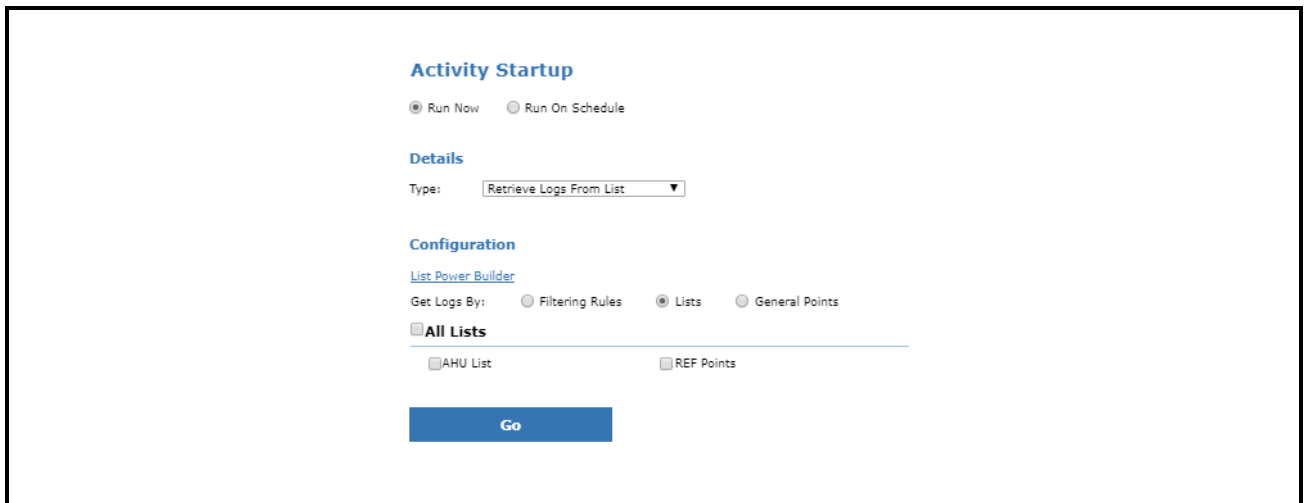


Figure 8-5 - Activity Startup

You can also choose **Run On Schedule** and specify the days/hours that you want this activity to run.

8.2.2 Schedule Manager

Schedule Manager

All schedules are based on the server's time zone: (GMT -05:00) Eastern Standard Time - America/New_York (EST) (DST)

Run Now Run On Schedule

Details

Enabled:

Name:

Type:

Schedule

- (GMT -05:00) Eastern Standard Time - America/New_York (EST) (DST)

Run Once Interval Based Calendar Based

Start Date/Time:

End Date/Time:

Every Day Days of Week Days of Month

Hours [0](#) [1](#) [2](#) [3](#) [4](#) [5](#) [6](#) [7](#) [8](#) [9](#) [10](#) [11](#) [12](#) [13](#) [14](#) [15](#) [16](#) [17](#) [18](#) [19](#) [20](#) [21](#) [22](#) [23](#)

Minutes [0](#) [5](#) [10](#) [15](#) [20](#) [25](#) [30](#) [35](#) [40](#) [45](#) [50](#) [55](#)

All

Clear

All

Clear

Notification

On Success On Unsuccessful

Figure 8-6 - Schedule Manager

You can view your Schedule in the Schedule Manager:

Schedule Manager

All schedules are based on the server's time zone: (GMT -05:00) Eastern Standard Time - America/New_York (EST) (DST)

Schedule Assistant Show System Schedules Show:

Name	Type	User	Schedule	Next Run Time	Last Run Time	Last Status
CB Maintenance		jmitchell	Every Day At 12:05 AM	5/2/20 12:05 AM	5/1/20 12:05 AM	Partially Completed
FQR Demo	FQR Data Gathering	engadmin	Every Day At 2:20 AM	5/2/20 2:20 AM	5/1/20 2:20 AM	Partially Completed
Setpoint Mgmt	Setpoint Resolution	administrator	Every Day At 5:05 AM	5/2/20 5:05 AM	5/1/20 5:05 AM	Partially Completed
M-Data Logs	Retrieve Logs	administrator	Every Day At 7:00 AM	5/2/20 7:00 AM	5/1/20 7:00 AM	Failed
100 Knaw Energy Logs	Retrieve Logs	administrator	Every Day At 7:30 AM	5/2/20 7:30 AM	5/1/20 7:30 AM	Completed
Logs	Retrieve Logs	administrator	On Mon, Wed, Fri and Sat At 5:25 PM	5/2/20 5:25 PM	5/1/20 5:25 PM	Completed
Setpoint Resolution	Setpoint Resolution	administrator	On Tue At 4:40 AM	5/5/20 4:40 AM	4/28/20 4:40 AM	Partially Completed
Indoor Modular Soln Wkly Lo...	Retrieve Logs From List	anicholson	On Thu In Apr, May, Jun and Jul At 10:00 P...	5/7/20 10:00 PM	4/30/20 10:00 PM	Completed
Backups	Backup	administrator	On the 24th Of Jan, Apr, Jul and Oct At 1:30...	7/24/20 1:30 PM	4/24/20 1:30 PM	Completed
	Retrieve Logs From List	jmitchell	Every Day At Many Different Times	disabled	2/15/19 4:25 PM	Failed
Power Monitoring	Retrieve Logs	jmitchell	Every Day At 7:00 AM	disabled	5/10/19 7:00 AM	Partially Completed
Advisory Monthly Report	Reporting - Emailing	engadmin	One Time Only		10/18/19 12:55 PM	Completed
Kathy test	Backup	khart	One Time Only		3/15/19 2:02 AM	Failed
KHart Test	Refresh Point List	khart	One Time Only		3/13/19 9:06 AM	Completed
Sample AHU KT	Setpoint Broadcast	jmitchell	One Time Only		6/6/19 2:30 PM	Completed

Displaying Schedules 1 - 17 of 17

Figure 8-7 - View Schedule

8.2.3 Schedule Assistant

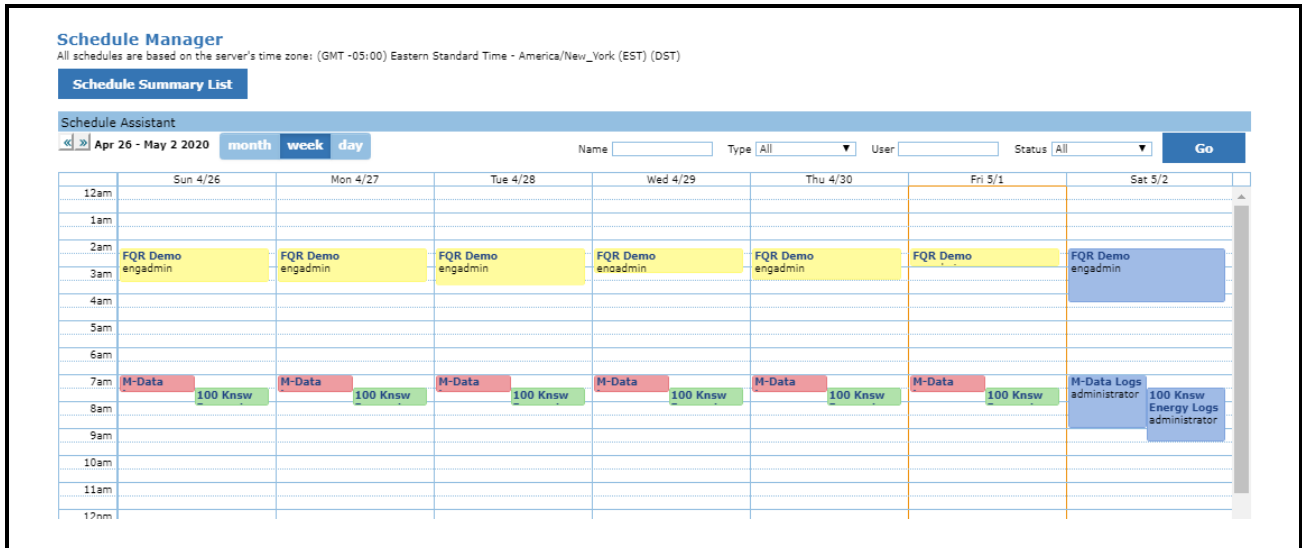


Figure 8-8 - Schedule Assistant

8.3 View Activities Status

You can check the Activity Status in Activity History whether the activity is started from any menu or if it is **Run Once** or **Run On Schedule**. You can access Activity History from the top menu or right-click menu at each Navigation Tree Level.

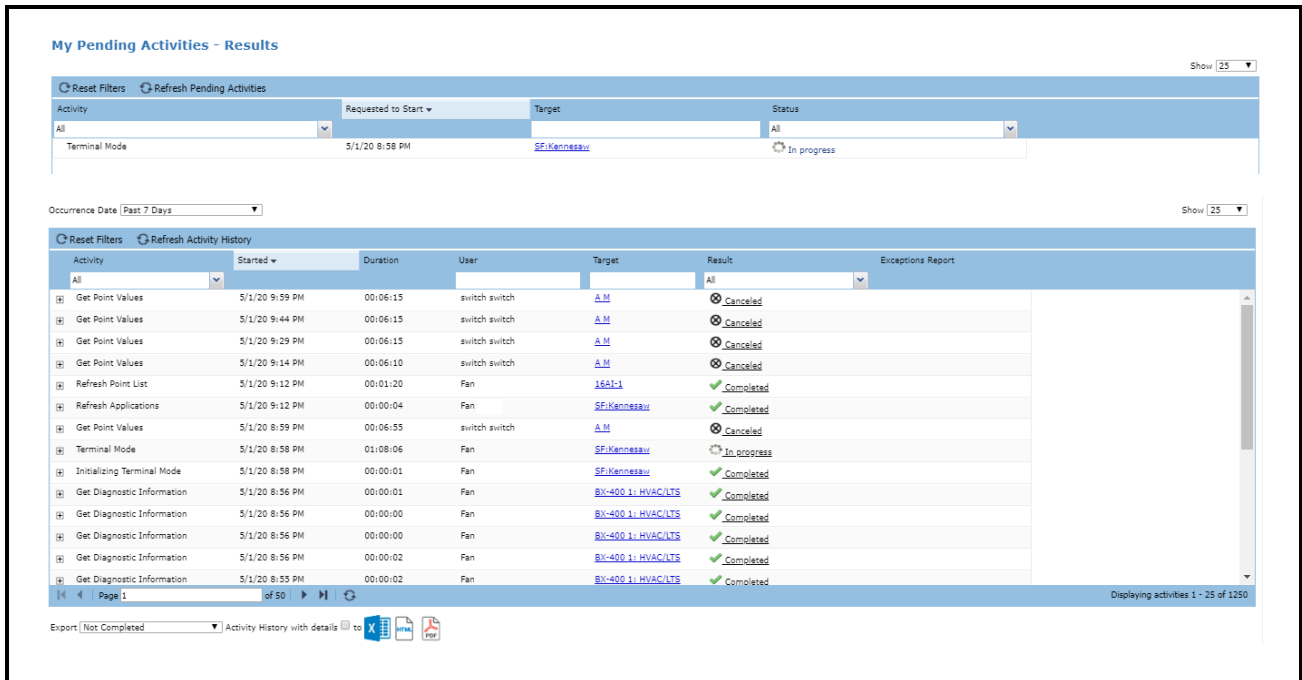


Figure 8-9 - Pending Activities

Field Name	Description
Activity	An activity includes all system and user-performed activities in Connect+. You may see some activities you that may not have been performed, such as Get Point Value. These activities can be called by other activities that have been performed such as Retrieve Logs.
Started	Time when the activity has been started
Duration	How long it takes Connect+ to perform the activity
User	Who performed this activity
Target	Directory/Site/Control System/Units/Application Type/Application/Points ***see below explanation for compound activity with multiple target
Result	In Progress, Complete, Partial Complete, Fail ***see below explanation for Partial Complete
Exception Report	When activities are partially complete or have failed, this report will include the reason for diagnosis.

Table 8-1 - View Activities Status

Tips: Certain Activities are compound activity. For compound activities, you can expand the parent activity to check each children activity's Target and Result. For example, Obtain Controller Information is an activity that contains Refresh Units, Refresh Application, and Refresh Point Lists. If you start Obtain Controller Information at the Directory Level, it would then apply to any site and controller. You would see an expanded list of sub-activities with Targets and Results. If any sub-activities have failed, the parent activity Result would be partially complete.

9 Global Search

A search can be performed by entering criteria into the search field (look for the magnifying glass) on the Connect+ header. You can search for a site's home screen, or for a specific directory, sites, controller, devices or points.



Figure 9-1 - Search Field

When a site is configured as the Site Home Screen, you can search the home screen by filling in the site name.

If you do not click the search button and wait for the site's home screen name to show up like a drop-down item, by clicking the site home screen name, you can be directed to that site's Home Screen directly.



Figure 9-2 - Site Home Page

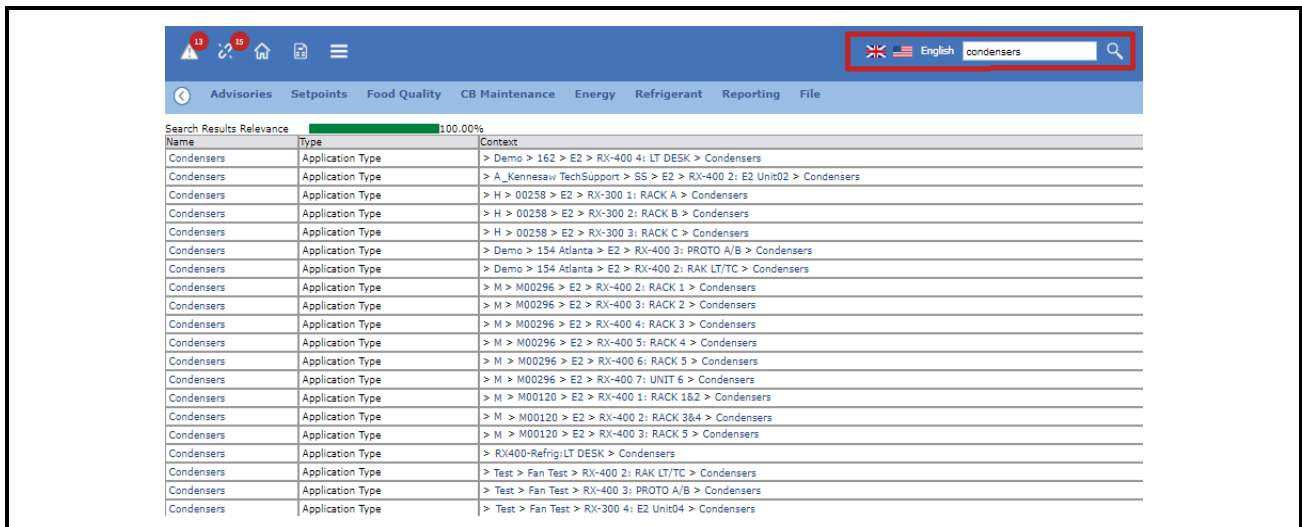


Figure 9-3 - Search Result

10 View Enterprise Summary

If you want to have an overall understanding of your Enterprise Assets such as:

- How many stores do I have?
- How many controllers do I have?
 - How many are building controllers?
 - How many are Ref Controllers?
 - How many are E2 and how many are Site Supervisor?
- How many Case Controllers do I have?
- How many Rooftop Units do I have?

The Enterprise Summary in the toolbar menu is the right place for you to find these answers.



You can view the Enterprise Summary from a Directory to Application Instance. Each contains different information.

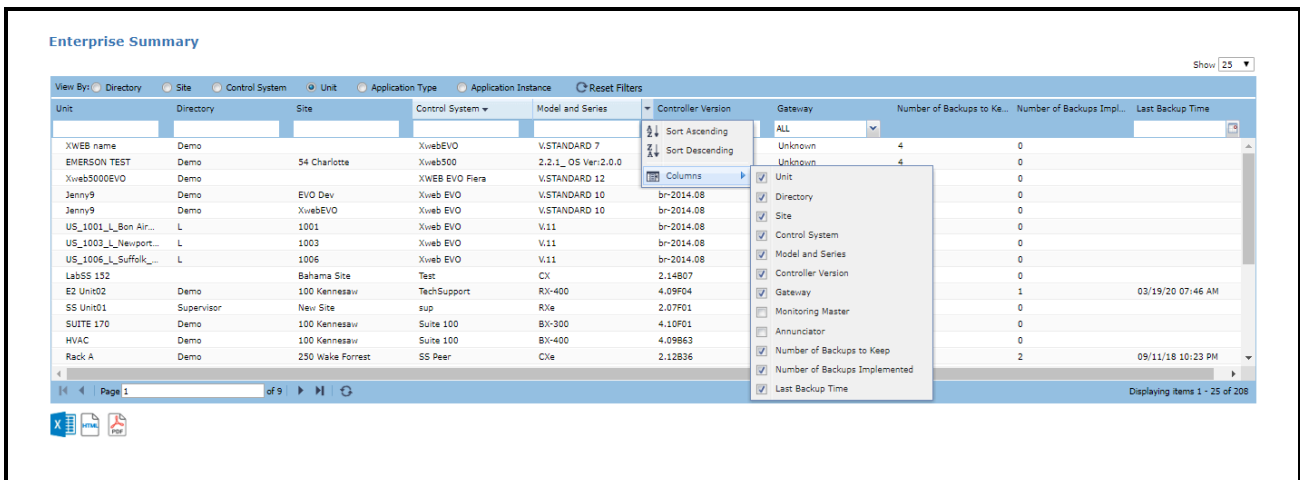


Figure 10-1 - Enterprise Summary

With the Advisory View, you can sort, filter and add more columns for your review. You can also export to Excel, PDF or HTML file types.

11 Installing Custom Screens in Site Supervisor

- 1. Log in to the Supervisor using a **One-Day Password**. Please send an e-mail to *SolutionsTechSup@Emerson.com* for the password.
- 2. After logging in, click the **Floorplan** icon.

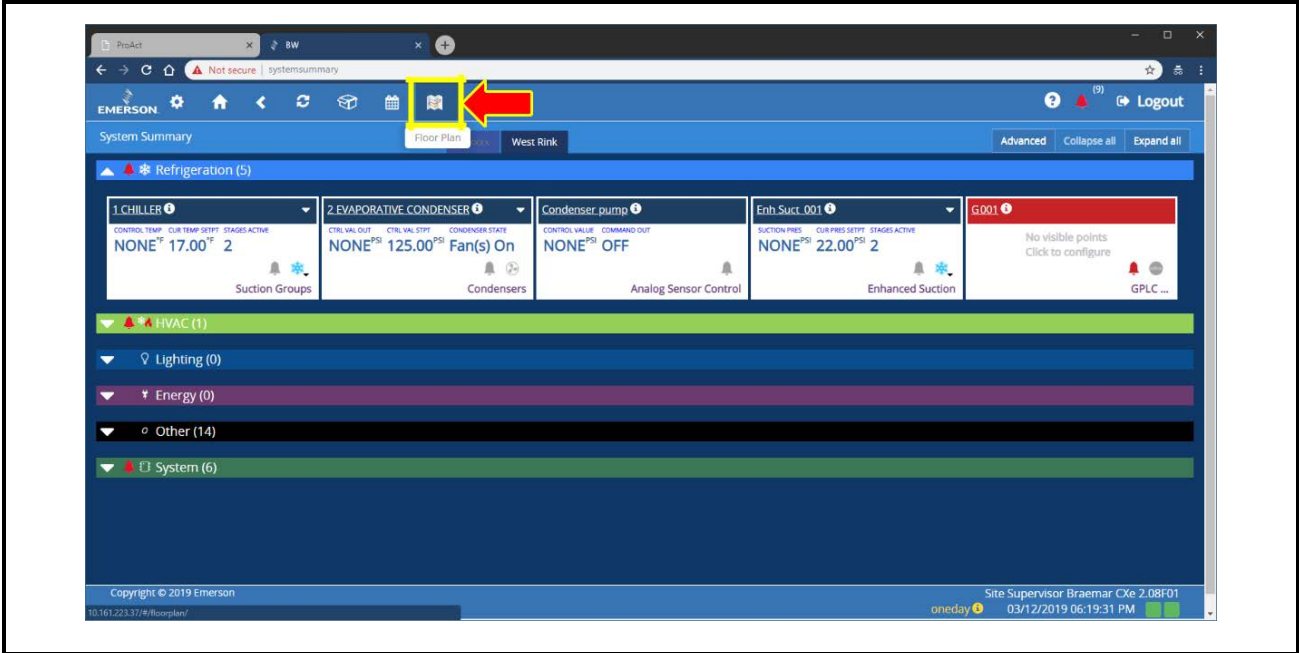


Figure 11-1 - Floor Plan Icon

- 3. Then click **Go to install**.

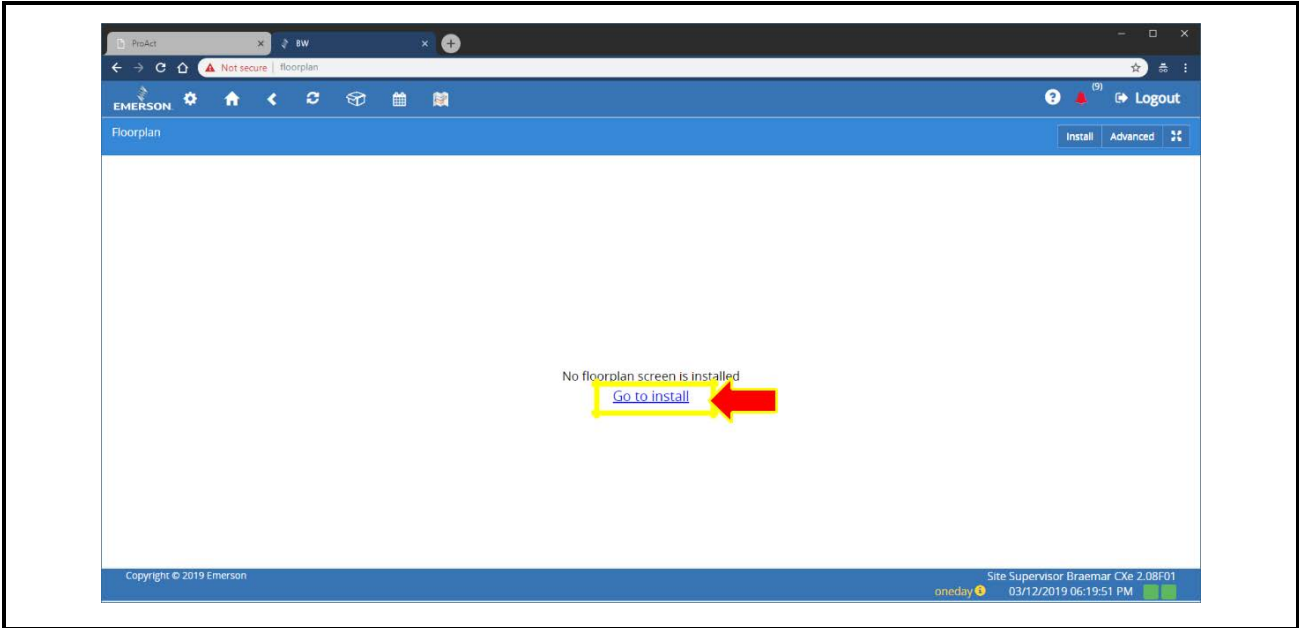


Figure 11-2 - Go to Install

4. Click **Install Floorplan** button.

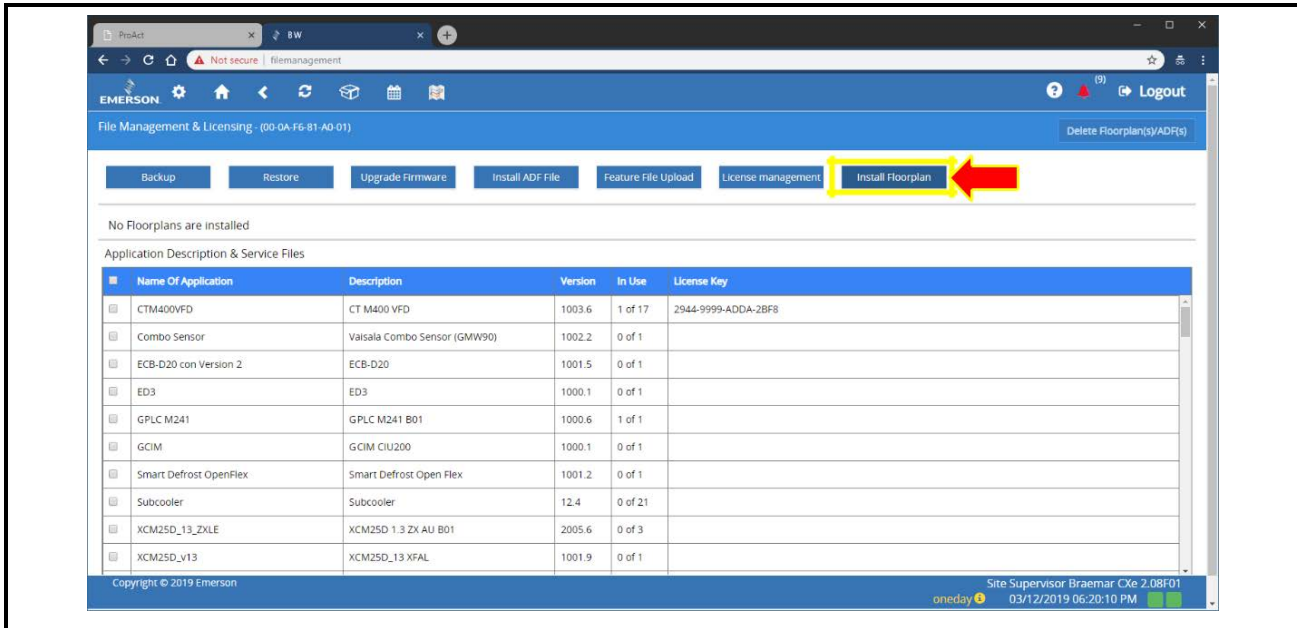


Figure 11-3 - Install Floorplan Button

5. A window will pop out where users will have the option of getting the custom screen file from the local PC or the controller's SD memory card. For this example, click **Local PC or other devices**.

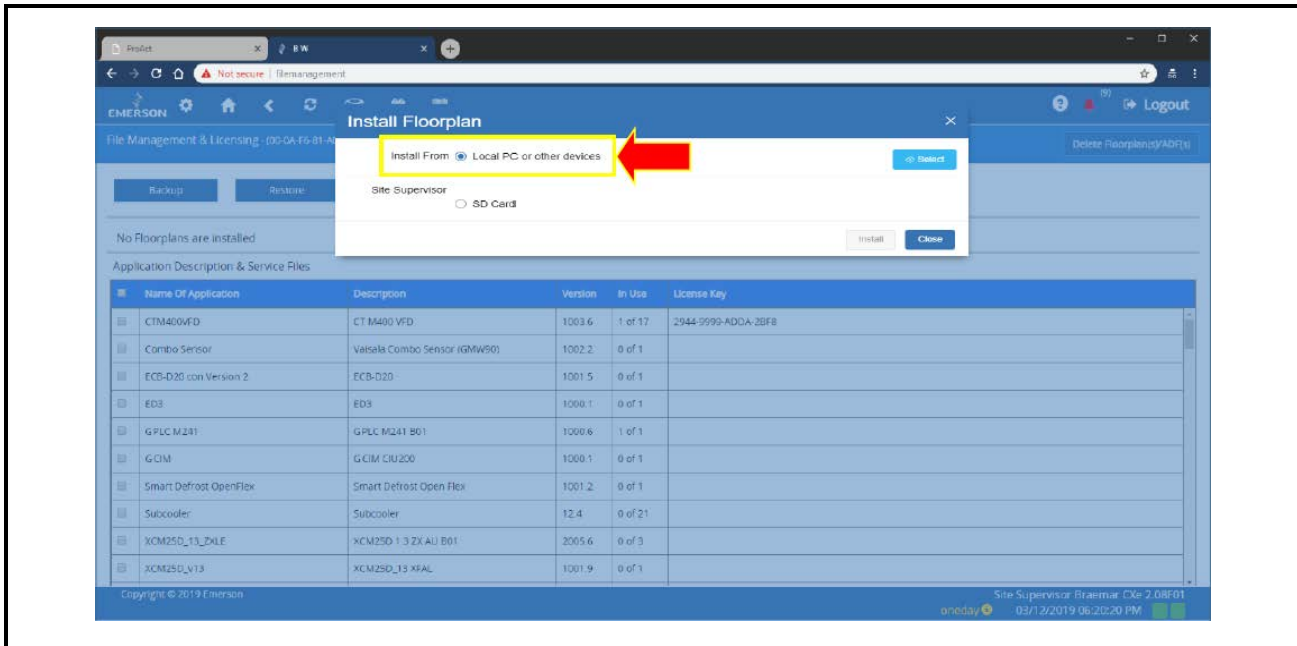


Figure 11-4 - Install Floorplan Window

- Another window will pop out. This time, navigate to the location of the custom screen file. Highlight the file, and click the **Open** button.

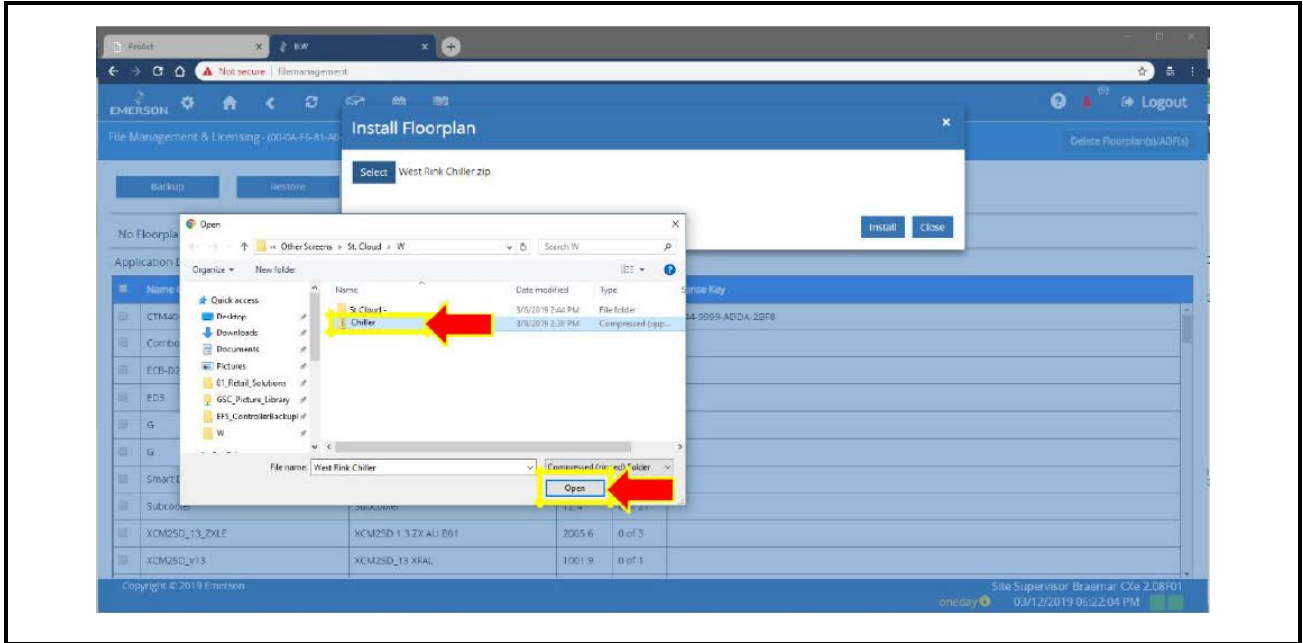


Figure 11-5 - Open Button

- Click the **Install** button.

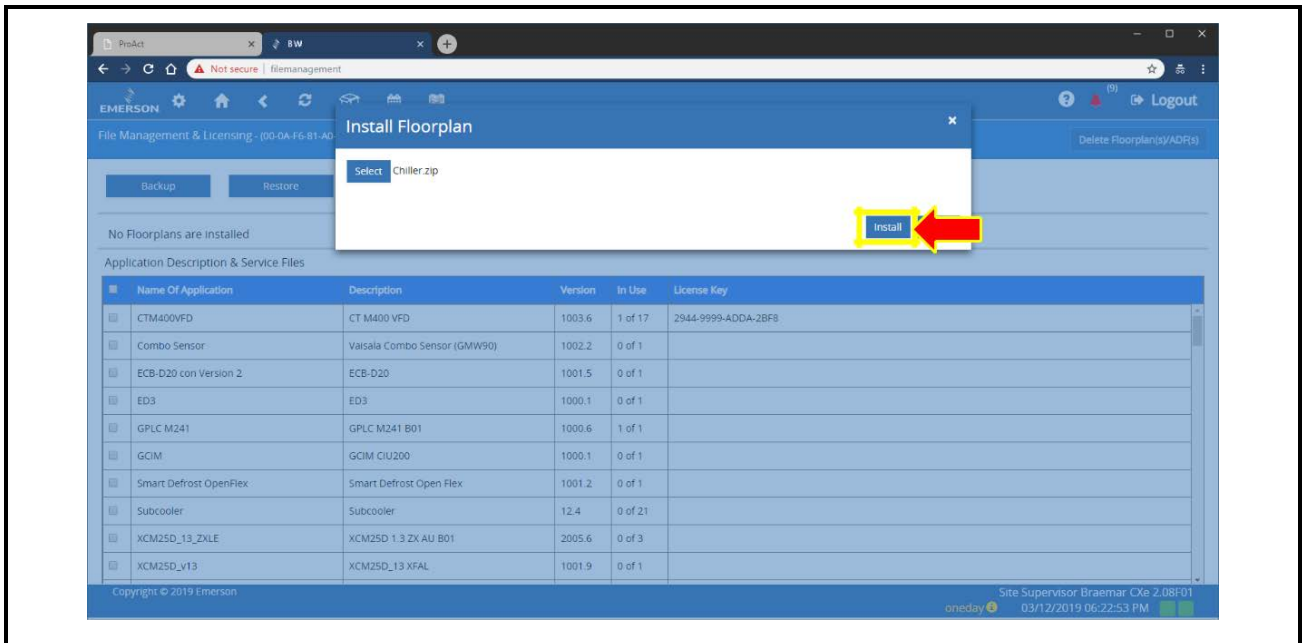


Figure 11-6 - Install Button

8. Wait while the floorplan is being installed. Once completed, you may click the **Ok** button.

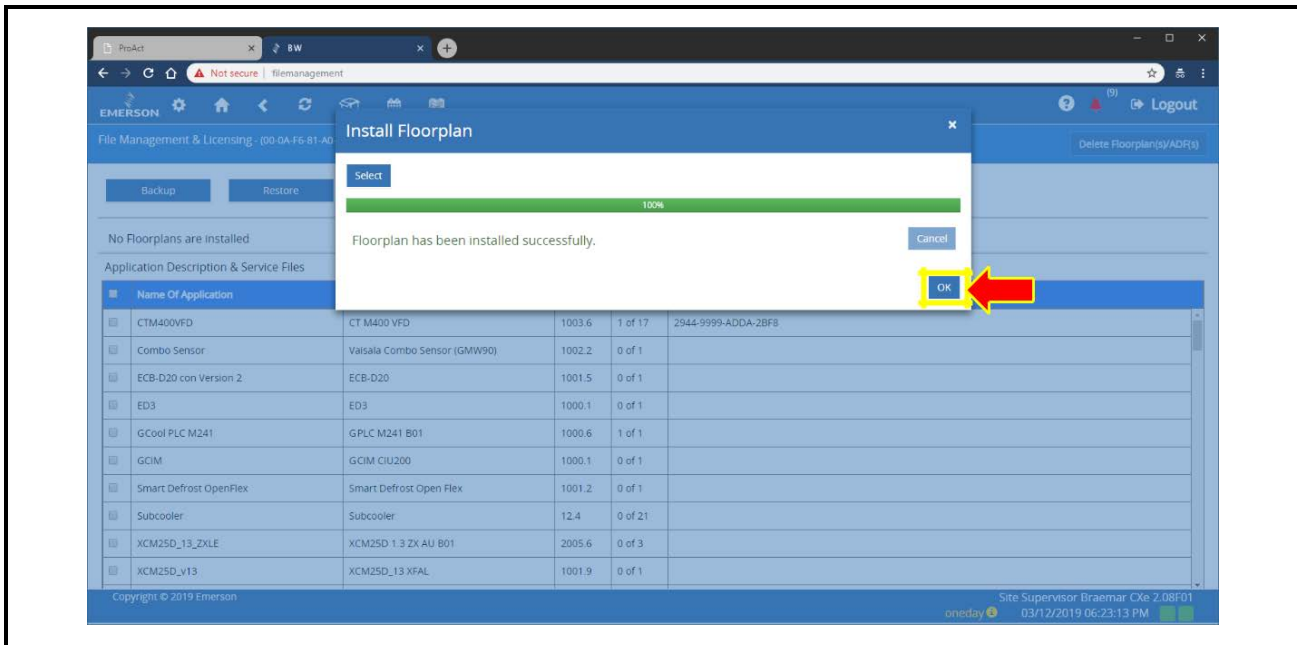


Figure 11-7 - OK Button

9. To access the screen, click the **Floorplan** button on the Main Menu.

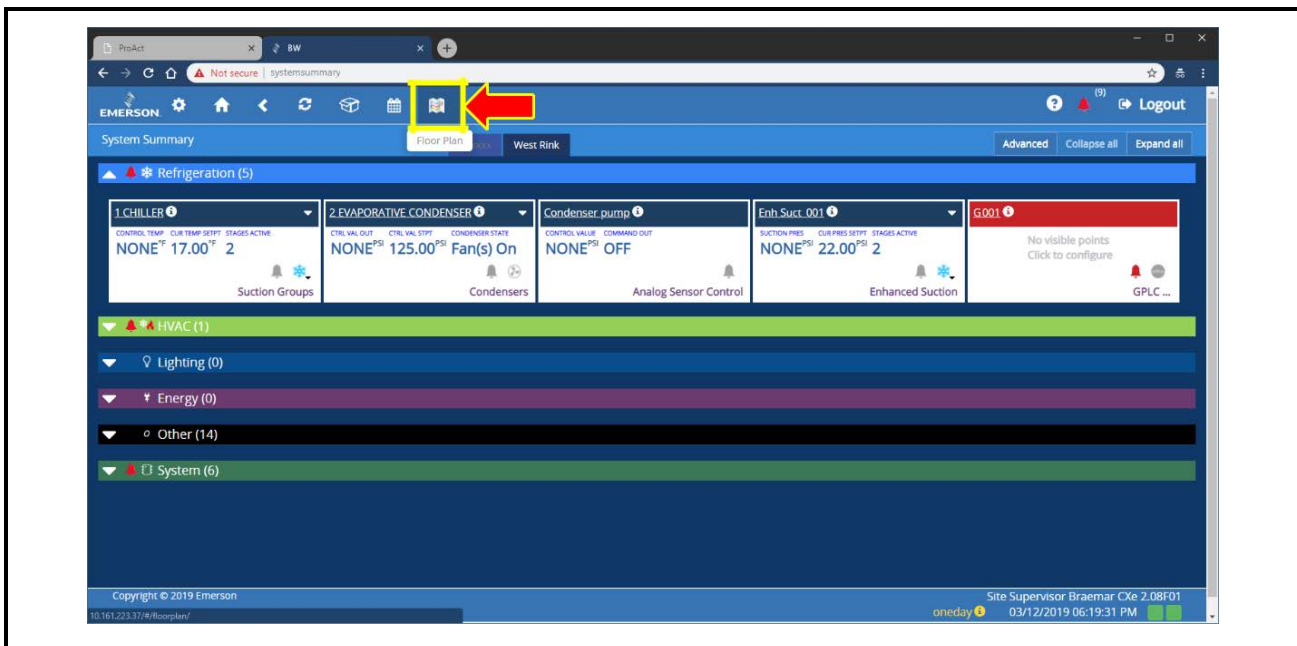


Figure 11-8 - Floorplan on Main Menu

10. The screen will then be shown.

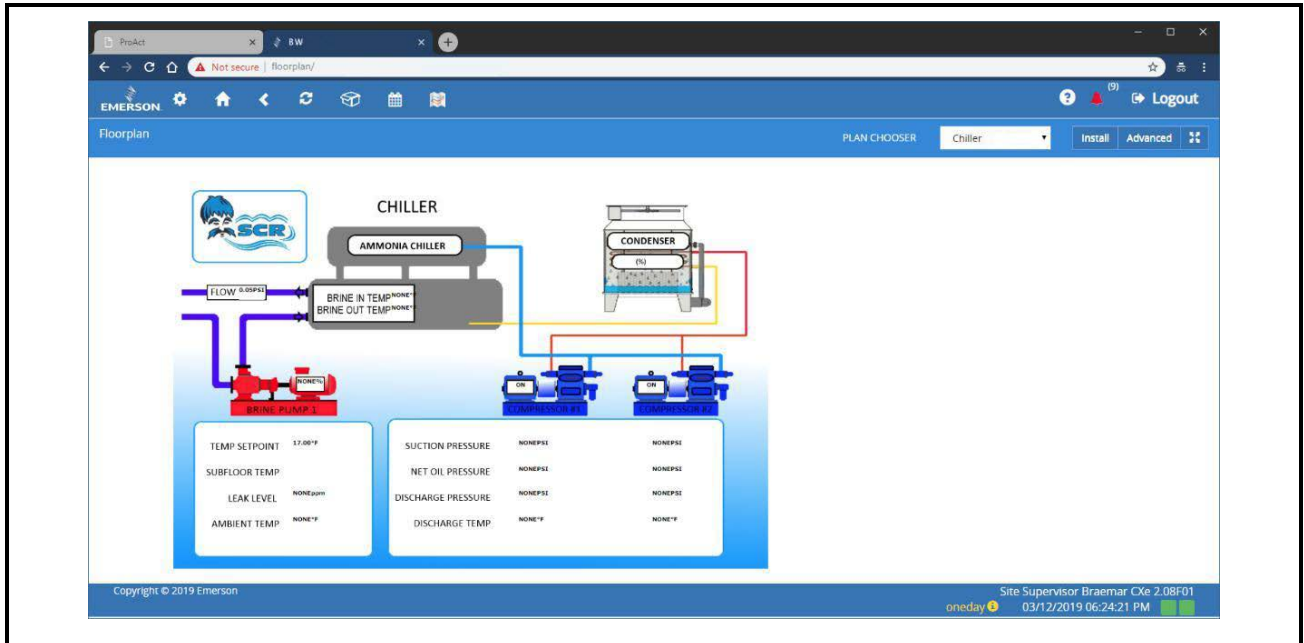


Figure 11-9 - Screen

11. Going back to the Home Page, click on the Gear icon.

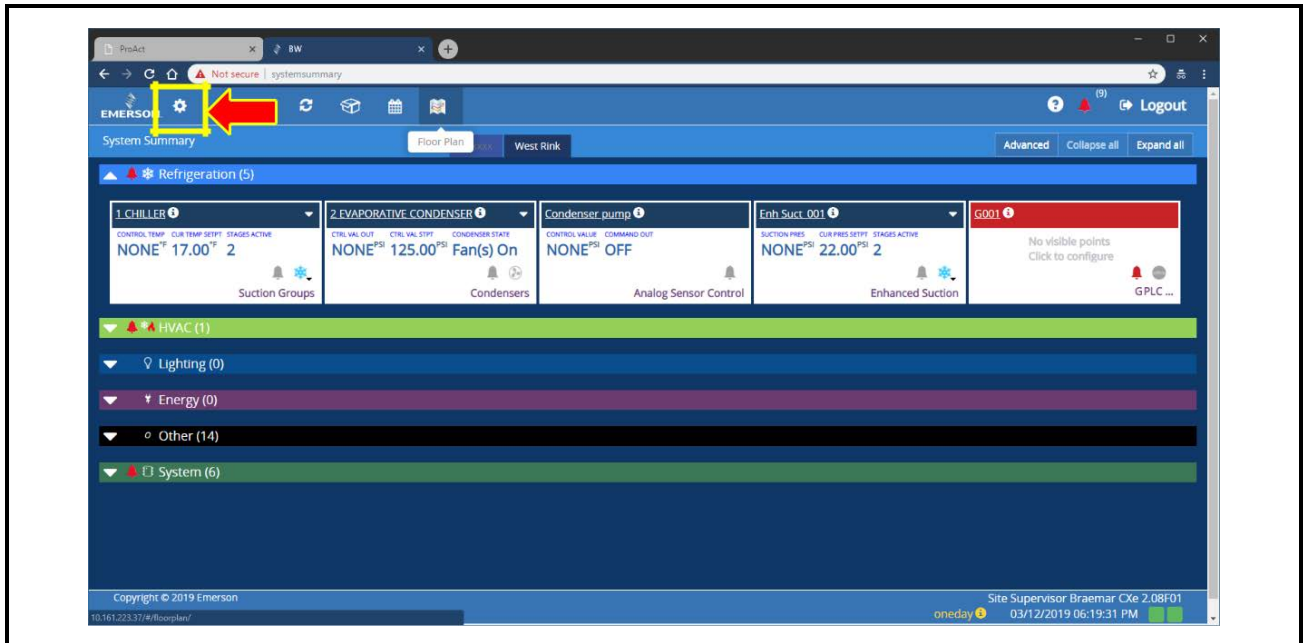


Figure 11-10 - Gear Icon

12. Select **My Profile** on the drop-down menu.

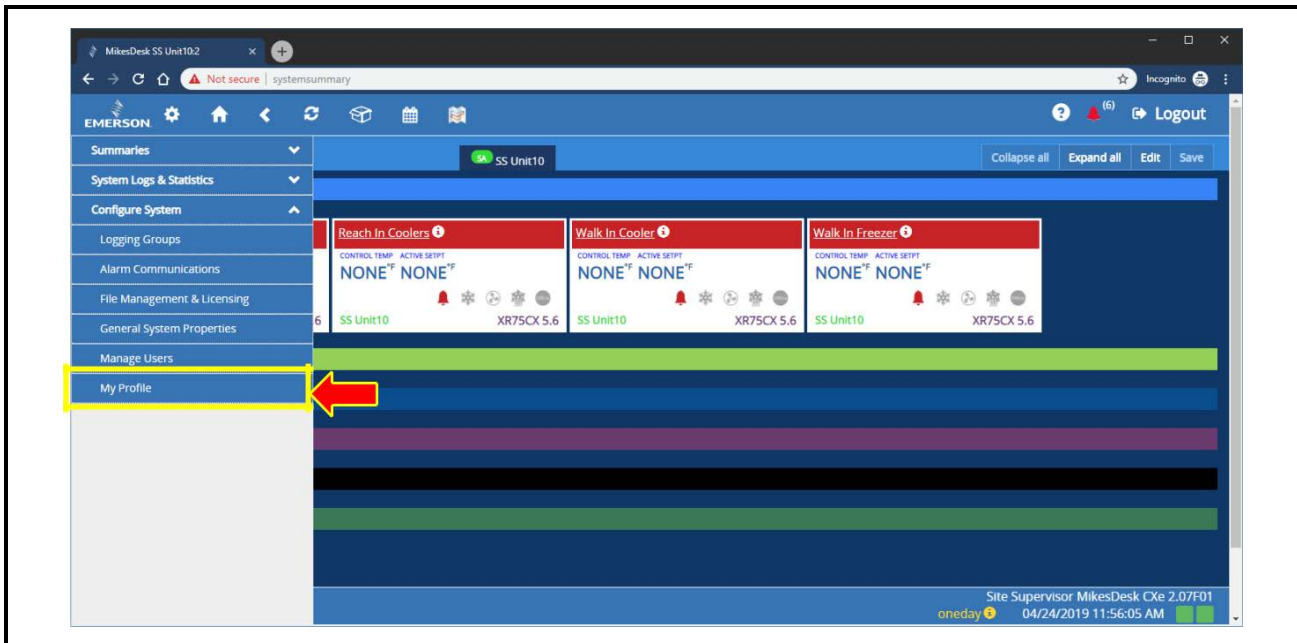


Figure 11-11 - My Profile

13. On my profile, click on selection beside **Set Home As** then chose **Floorplan** on the drop-down menu.

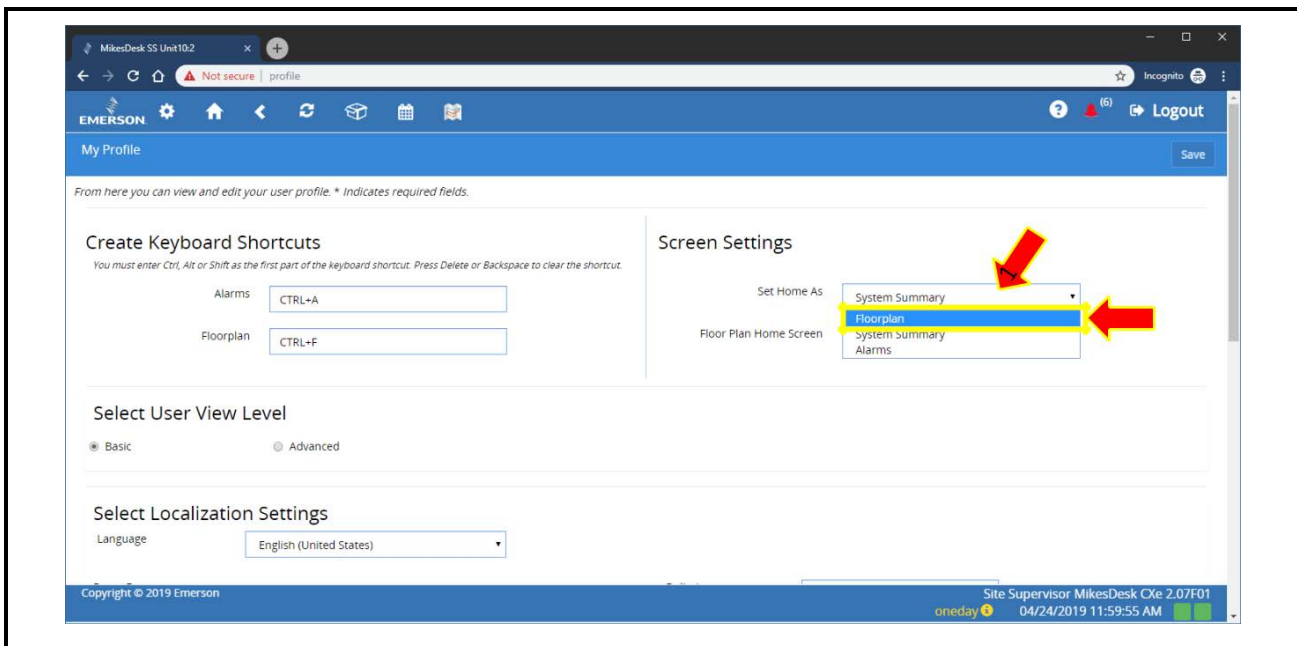


Figure 11-12 - Choose Floorplan

14. Check if the Custom Screen name is automatically filled in on the Home Screen. If not, click on the selection and chose the screen.

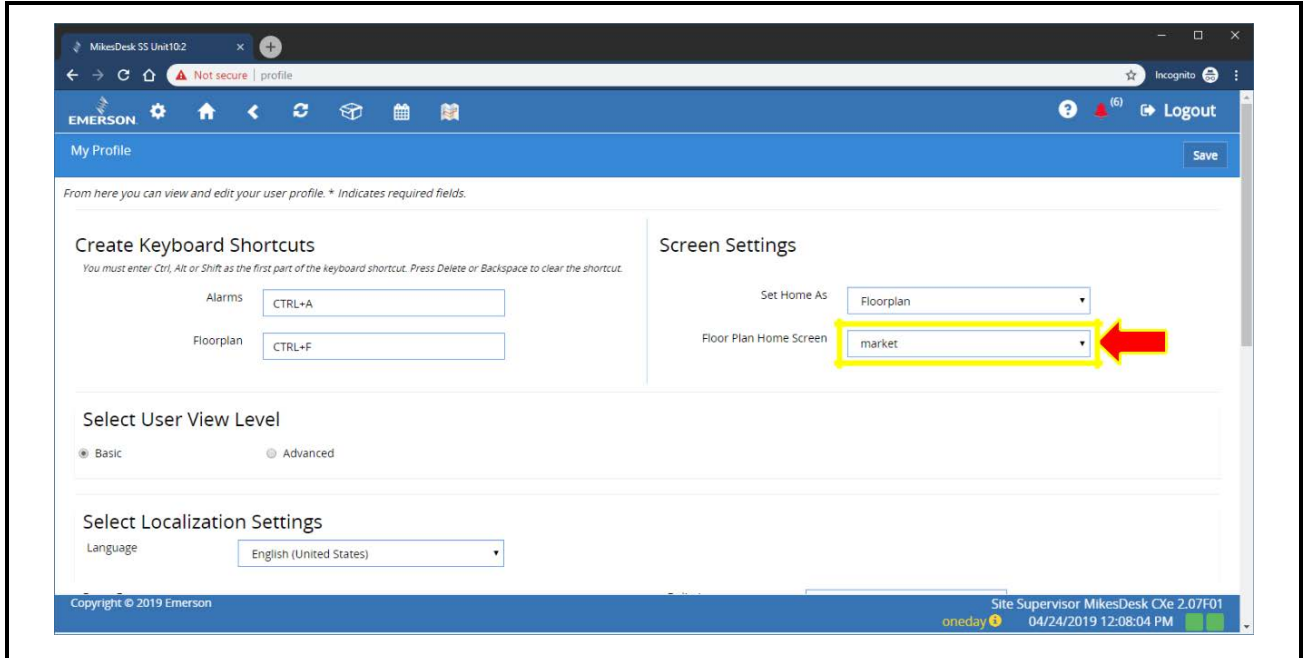


Figure 11-13 - Custom Screen

15. Click on the **Save** button to finish.

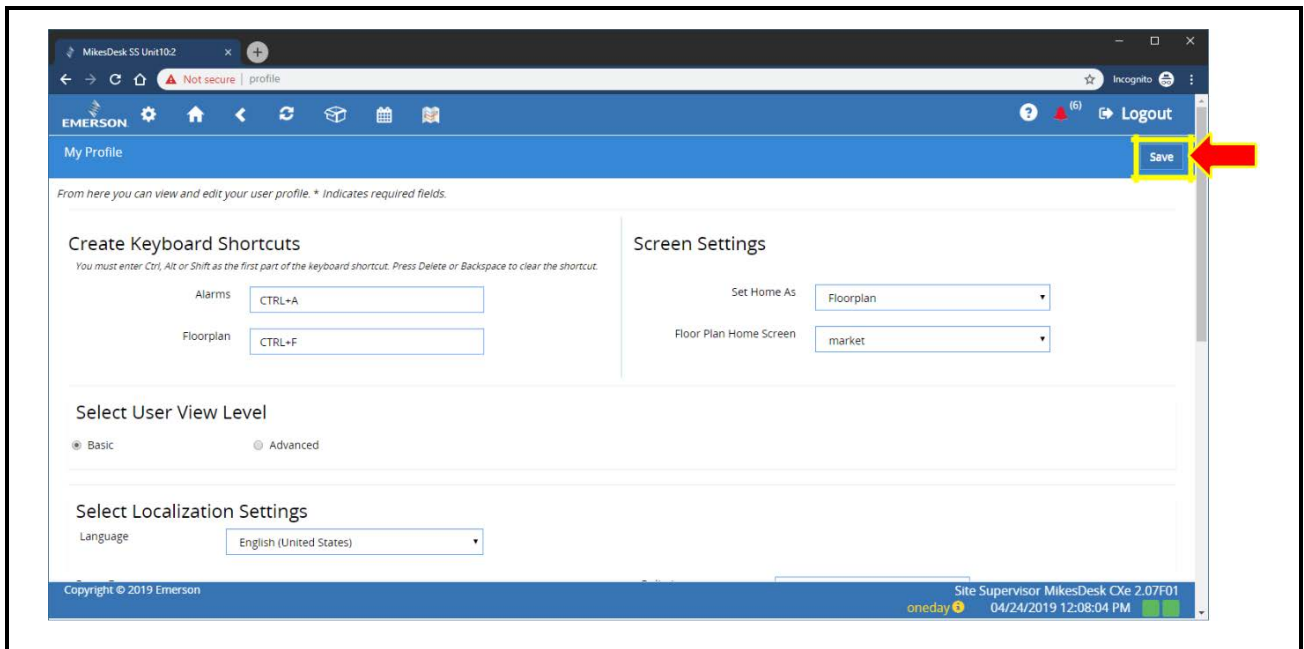


Figure 11-14 - Save Button

Appendix A: Summary of Export Capability

Data to Export	Connect+ Page	UI Access
Advisories	Advisory View	Toolbar Menu and Navigation Tree
Live Advisories	Live Advisory	Tree Control System
Log Data	Watch Points	Watch Point Page
	Log Graph	Advisories View->Log Graph->Setting Watch Points->Log Graph->Setting Graphical Screens->Log Graph->Setting
Connection Verification Report	Site not Sending Alarms	Toolbar Menu
Enterprise Summary	Enterprise Summary	Toolbar Menu

Table A-1 - Summary of Export

Appendix B: System Summary Screens

System Summary Screen	UI Access Level
Refrigerant Summary	Site
Building Summary	Site
Other Summary	Site
Summary (Controller)	Unit
Summary (Application)	Application Type
Defrost Summary	Application Type
Graphical Status	Application Instance
Status	Application Instance

Table B-1 - System Summary Screens

Site Level: Refrigeration Summary

Refrigeration Summary

Unit	Suction Group	Suction	Suct SP	Suct Temp	Disch	Active Stages	Total Stages	% Cap	Status
No application instances of this type									

Unit	Enhanced Suct Grp	Suction	Suct SP	Suct Temp	Disch	Active Stages	Total Stages	% Cap	Status
RX-400 2: RAK LT/TC	RAK LT	17.0 PSI	15.0 PSI	NONE °F	NONE °F	4	4	100.0 %	OK
RX-400 2: RAK LT/TC	RAK TC	20.0 PSI	15.0 PSI	NONE °F	NONE °F	2	2	100.0 %	OK
RX-400 3: PROTO A/B	PROTOCOL A	54.0 PSI	50.0 PSI	NONE °F	NONE °F	6	6	100.0 %	OK
RX-400 3: PROTO A/B	PROTOCOL B	63.9 PSI	54.0 PSI	NONE °F	NONE °F	6	6	50.0 %	OK

Unit	Condenser	P Ctrl	P Set
RX-300 4: E2 Unit04	CONDENSER	NONE PSI	200.0 PSI
RX-400 2: RAK LT/TC	CONDENSER LT	216.2 PSI	210.0 PSI
RX-400 2: RAK LT/TC	CONDENSER TC	172.4 PSI	180.0 PSI
RX-400 3: PROTO A/B	CONDENSER A	??	??
RX-400 3: PROTO A/B	CONDENSER B	150.0 PSI	222.0 PSI

Unit	Circuit (CC)	Alarm	State	Temp	Setpt
No application instances of this type					

[Back](#)
[Home](#)
[Building Summary](#)
[Other Summary](#)

Site Level: Building Summary

/Demo/154 Atlanta

Building Summary

Unit	Outside Temp	Outside Hum	Inside Hum	Outside Light
BX-400 1: HVAC/LTS	NONE °F	NONE RH	NONE RH	NONE Ftc
RX-300 4: E2 Unit04	NONE °F	NONE RH	NONE RH	NONE Ftc
RX-400 2: RAK LT/TC	NONE °F	NONE RH	NONE RH	NONE Ftc
RX-400 3: PROTO A/B	NONE °F	NONE RH	NONE RH	NONE Ftc

Unit	AHU	Temp	Setpt	Status	Occupied
BX-400 1: HVAC/LTS	1-MAIN AHU	NONE °F	NONE °F	No Ctrl	UNOCC
BX-400 1: HVAC/LTS	AHU1	NONE °F	NONE °F	No Ctrl	UNOCC
BX-400 1: HVAC/LTS	GMI-SALES AREA	NONE °F	NONE °F	No Ctrl	UNOCC
BX-400 1: HVAC/LTS	RTU-1 BAKERY	NONE °F	NONE °F	No Ctrl	UNOCC
BX-400 1: HVAC/LTS	RTU-2A PRODUCE	NONE °F	NONE °F	No Ctrl	UNOCC
BX-400 1: HVAC/LTS	RTU-2B PRODUCE	NONE °F	NONE °F	No Ctrl	UNOCC
BX-400 1: HVAC/LTS	RTU-3 KITCHEN	NONE °F	NONE °F	No Ctrl	UNOCC
BX-400 1: HVAC/LTS	RTU-4 CONF RM	NONE °F	NONE °F	No Ctrl	UNOCC

Unit	ARTC	Temp	Occup	Unit	Lighting (ENH)	Output	Unit	Schedule	Output
No application instances of this type									
BX-400 1: HVAC/LTS				BX-400 1: HVAC/LTS	OUTSIDE LIGHTS	On	BX-400 1: HVAC/LTS	10101	na
BX-400 1: HVAC/LTS				BX-400 1: HVAC/LTS	PARKING LOT	On	BX-400 1: HVAC/LTS	MAIN OCCUPANCY	Off
BX-400 1: HVAC/LTS				BX-400 1: HVAC/LTS	SALES LIGHTS	On	BX-400 1: HVAC/LTS	RTU-1 OCCUPANCY	na
BX-400 1: HVAC/LTS				BX-400 1: HVAC/LTS	STOCK LIGHTS	Off	BX-400 1: HVAC/LTS	RTU-2A OCCUPANCY	On
							BX-400 1: HVAC/LTS	RTU-2B OCCUPANCY	On
							BX-400 1: HVAC/LTS	RTU-3 OCCUPANCY	On
							BX-400 1: HVAC/LTS	RTU-4 OCCUPANCY	On

[Back](#)
[Home](#)
[Refrigeration Summary](#)
[Other Summary](#)

Site Level: Other Summary

Other Summary

Unit	Anti-Sweat	Dewpoint	ON %
RX-400 2: RAK LT/TC	ANTI-SWEAT01	NONE °F	0.0
RX-400 2: RAK LT/TC	ANTI-SWEAT02	NONE °F	0.0
RX-400 2: RAK LT/TC	ANTI-SWEAT03	NONE °F	0.0

Unit	Demand Control	Instant	Status
No application instances of this type			

Unit	Power Channel	KW	Avg KW	Shed	Time in Shed
BX-400 1: HVAC/LTS	MAIN POWER MON	0.0 KW	0.0 KW	RESTORE 0	

Unit	Analog Sensor	Value	Command
BX-400 1: HVAC/LTS	COMPRESOR ROOM	NONE °F	Off
BX-400 1: HVAC/LTS	COMPUTER ROOM	NONE °F	Off
BX-400 1: HVAC/LTS	PHARMACY TEMP	NONE °F	Off
RX-400 2: RAK LT/TC	AMB TMP SEL LT	NONE °F	Off
RX-400 2: RAK LT/TC	AMB TMP SEL TC	90.0 °F	Off
RX-400 2: RAK LT/TC	AMB TMP CALC LT	90.0 °F	Off
RX-400 2: RAK LT/TC	AMB TMP CALC TC	NONE °F	Off
RX-400 2: RAK LT/TC	DIS TEMP RK LT	NONE °F	Off
RX-400 2: RAK LT/TC	DIS TEMP RK TC	NONE °F	Off
RX-400 2: RAK LT/TC	DISCH TEMP LT	NONE °F	On

Unit	Digital Sensor	Ctrl Value	Command
BX-400 1: HVAC/LTS	Load	Off	Off
RX-400 2: RAK LT/TC	12VDC PWR RX #2	Off	On
RX-400 2: RAK LT/TC	ALARM DISABLE	na	Off
RX-400 2: RAK LT/TC	ATC BYPASS LT	Off	Off
RX-400 2: RAK LT/TC	ATC BYPASS TC	Off	Off
RX-400 2: RAK LT/TC	ATC CONTROL LT	Off	On
RX-400 2: RAK LT/TC	ATC CONTROL TC	Off	On
RX-400 2: RAK LT/TC	MTPREP RUN PRF	Off	On
RX-400 3: PROTO A/B	ALARM DISABLE	na	Off
RX-400 3: PROTO A/B	ATC CONTROL A	Off	On

Back
Home
Refrigeration Summary
Building Summary

Controller Unit Level: Controller Summary

Building Controller Summary

Controller Summary

Outside Temp	Outside Hum	Inside Hum	Outside Light
NONE °F	NONE RH	NONE RH	NONE Ftc

AHU	Temp	Setpt	Status	Occupied
1-MAIN AHU	NONE °F	NONE	No Ctrl	UNOCC
AHU1	NONE °F	NONE	No Ctrl	UNOCC
AREA	NONE °F	NONE	No Ctrl	UNOCC
RTU-1 BAKERY	NONE °F	NONE	No Ctrl	UNOCC
RTU-2A PRODUCE	NONE °F	NONE	No Ctrl	UNOCC
RTU-2B PRODUCE	NONE °F	NONE	No Ctrl	UNOCC
RTU-3 KITCHEN	NONE °F	NONE	No Ctrl	UNOCC
RTU-4 CONF RM	NONE °F	NONE	No Ctrl	UNOCC

ARTC	Temp	Occup
No application instances of this type		

Lighting (ENH)	Output
OUTSIDE LIGHTS	On
PARKING LOT	On
SALES LIGHTS	On
STOCK LIGHTS	Off

Schedule	Output
10101	na
MAIN OCCUPANCY	Off
RTU-1 OCCUPANCY	na
RTU-2A OCCUPANCY	On
RTU-2B OCCUPANCY	On
RTU-3 OCCUPANCY	On
RTU-4 OCCUPANCY	On

Ref Controller Summary

Controller Summary

Suction Group	Suction	Suct SP	Suct Temp	Disch	Active Stages	Total Stages	% Cap	Status
No application instances of this type								

Enhanced Suct Grp	Suction	Suct SP	Suct Temp	Disch	Active Stages	Total Stages	% Cap	Status
RACK LT	17.0 PSI	15.0 PSI	NONE °F	NONE PSI	4	4	100.0 %	OK
RACK TC	20.0 PSI	15.0 PSI	NONE °F	NONE PSI	2	2	100.0 %	OK

Condenser	P Ctrl	P Setpt	T Ctrl	T Setpt	VS RPM	VS %	State
CONDENSER LT	211.3 PSI	210.0 PSI	??	??	??	??	Fan(s) On
CONDENSER TC	171.9 PSI	180.0 PSI	??	??	??	??	Fan(s) On

Circuit (CC)	Alarm	State	Temp	Setpt	Circuit (Standard)	Alarm	State	Temp	Setpt
No application instances of this type									
GROC	..	REFRIGERATION	-9.3 °F	-12.0	GROC	..	REFRIGERATION	-9.3 °F	-12.0
FROZ FD	..	REFRIGERATION	0.3 °F	0.0	FROZ FD	..	REFRIGERATION	0.3 °F	0.0
FROZ FD	..	REFRIGERATION	1.3 °F	0.0	FROZ FD	..	REFRIGERATION	1.3 °F	0.0
FROZ FD	..	REFRIGERATION	0.2 °F	0.0	FROZ FD	..	REFRIGERATION	0.2 °F	0.0
FROZ FD	..	REFRIGERATION	-1.4 °F	0.0	FROZ FD	..	REFRIGERATION	-1.4 °F	0.0
FROZ MT	..	REFRIGERATION	0.2 °F	0.0	FROZ MT	..	REFRIGERATION	0.2 °F	0.0
FROZ FD	..	REFRIGERATION	-0.3 °F	0.0	FROZ FD	..	REFRIGERATION	-0.3 °F	0.0
DT MEAT	..	REFRIGERATION	-0.7 °F	-1.0	DT MEAT	..	REFRIGERATION	-0.7 °F	-1.0
DT MEAT	..	REFRIGERATION	-1.7 °F	0.0	DT MEAT	..	REFRIGERATION	-1.7 °F	0.0
DT MEAT	..	REFRIGERATION	22.0 °F	28.0	DT MEAT	..	REFRIGERATION	22.0 °F	28.0
FRZR	..	REFRIGERATION	-7.5 °F	0.0	FRZR	..	REFRIGERATION	-7.5 °F	0.0
MEAT PREP 30	..	REFRIGERATION	50.1 °F	50.0	MEAT PREP 30	..	REFRIGERATION	50.1 °F	50.0

Application Type Level: Summary Screens

Circuits (Standard)

[Back](#)
[Home](#)

Name	State	Temp	Setpt	Alarm	Refr	Defr
GROC	REFRIGERATION	-9.3 °F	-12.0	..	On	Off
RI FROZ FD	REFRIGERATION	-0.6 °F	0.0	..	Off	Off
RI FROZ FD	REFRIGERATION	1.4 °F	0.0	..	Off	Off
RI FROZ FD	REFRIGERATION	-2.8 °F	0.0	..	Off	Off
RI FROZ FD	REFRIGERATION	-0.9 °F	0.0	..	Off	Off
MD FROZ MT	REFRIGERATION	1.0 °F	0.0	..	Off	Off
RI FROZ FD	REFRIGERATION	-1.8 °F	0.0	..	Off	Off
MEAT	REFRIGERATION	-2.2 °F	-1.0	..	Off	Off
MEAT	REFRIGERATION	1.7 °F	0.0	..	On	Off
MEAT	REFRIGERATION	27.1 °F	28.0	..	Off	Off
FRZR	REFRIGERATION	-7.5 °F	0.0	..	On	Off
MEAT PREP 30	REFRIGERATION	47.0 °F	50.0	..	Off	Off
SRVC FISH	REFRIGERATION	-3.5 °F	34.0	..	On	Off
RI ICREAM	REFRIGERATION	-5.3 °F	-10.0	..	On	Off
RI ICREAM	REFRIGERATION	-1.7 °F	-10.0	..	On	Off
RI FRZ FD	REFRIGERATION	-0.2 °F	0.0	..	On	Off
FRZ SEAFD	REFRIGERATION	-1.6 °F	-2.0	..	On	Off

Defrost Summary


[Back](#)
[Home](#)

Circuit	Defr 1	Defr 2	Defr 3	Defr 4	Defr 5	Defr 6	Defr 7	Defr 8	Defr 9	Defr 10	Defr 11	Defr 12	Defr 13	Defr 14	Defr 15	Defr 16	Defr 17	Defr 18	Defr 19	Defr 20	Defr 21	Defr 22	Defr 23	Defr 24	Type	Max Time	
GROC	0:30	6:30	16:30	?	?	?	?	?	?	?	?	?	?	?	?	?	?	?	?	?	?	?	?	?	?	HOT GAS 0:35	
FROZ	1:00	?	?	?	?	?	?	?	?	?	?	?	?	?	?	?	?	?	?	?	?	?	?	?	?	HOT GAS 0:20	
FROZ FD	1:30	?	?	?	?	?	?	?	?	?	?	?	?	?	?	?	?	?	?	?	?	?	?	?	?	HOT GAS 0:20	
FROZ FD	2:00	?	?	?	?	?	?	?	?	?	?	?	?	?	?	?	?	?	?	?	?	?	?	?	?	HOT GAS 0:20	
FROZ FD	2:30	6:00	14:30	20:30	?	?	?	?	?	?	?	?	?	?	?	?	?	?	?	?	?	?	?	?	?	HOT GAS 0:20	
FROZD MT	3:00	9:00	15:00	21:00	?	?	?	?	?	?	?	?	?	?	?	?	?	?	?	?	?	?	?	?	?	HOT GAS 0:20	
FROZ FD	3:30	?	?	?	?	?	?	?	?	?	?	?	?	?	?	?	?	?	?	?	?	?	?	?	?	HOT GAS 0:20	
MEAT	4:00	16:00	?	?	?	?	?	?	?	?	?	?	?	?	?	?	?	?	?	?	?	?	?	?	?	HOT GAS 0:20	
MEAT	?	?	?	?	?	?	?	?	?	?	?	?	?	?	?	?	?	?	?	?	?	?	?	?	?	HOT GAS 0:20	
MEAT	?	?	?	?	?	?	?	?	?	?	?	?	?	?	?	?	?	?	?	?	?	?	?	?	?	HOT GAS 0:20	
SEAFD	4:30	10:30	16:30	22:30	?	?	?	?	?	?	?	?	?	?	?	?	?	?	?	?	?	?	?	?	?	HOT GAS 0:25	
FRZR	MEAT PREP 302:00	?	?	?	?	?	?	?	?	?	?	?	?	?	?	?	?	?	?	?	?	?	?	?	?	OFF CYCLE	2:00
SRVC FISH	2:00	14:00	?	?	?	?	?	?	?	?	?	?	?	?	?	?	?	?	?	?	?	?	?	?	?	HOT GAS 0:18	
RI ICREAM	5:30	17:30	?	?	?	?	?	?	?	?	?	?	?	?	?	?	?	?	?	?	?	?	?	?	?	HOT GAS 0:22	
RI ICREAM	0:00	12:00	?	?	?	?	?	?	?	?	?	?	?	?	?	?	?	?	?	?	?	?	?	?	?	HOT GAS 0:22	
RI FRZ FD	3:00	15:00	?	?	?	?	?	?	?	?	?	?	?	?	?	?	?	?	?	?	?	?	?	?	?	HOT GAS 0:20	
FRZ SEAFD	1:00	7:00	13:00	19:00	?	?	?	?	?	?	?	?	?	?	?	?	?	?	?	?	?	?	?	?	?	HOT GAS 0:18	

Application Instance Level: Status Screen & Graphical Status

Status: REFRIGERATION

INPUT STATUS	
Control Temp	-9.3 °F
Case Temp Setpoint	-12.0 °F
Term Type	TIME



OUTPUT STATUS	
Refrigeration	On
Defrost	Off
Fan	On
LLS	INACTV
Clean Switch	NONE

Case	Case Temp
1	-9.3 °F

/Demo/154 Atlanta/E2/"RX-400 2: RAK LT/TC"/Circuits (Standard)/LT1 GROC

Standard Circuits Status

Input Property:	Value:	Setpoint Property	Value:	Output Property:	Value:
EMERGENCY OVR	na	Term Type	TIME	CIRCUIT STATE	REFRIGERATION
CASE TEMP 1	-9.3 °F	CASE TEMP STPT	-12.0 °F	REFRIG SOLENOID	On
CONTROL TEMP	-9.3 °F	CASE ALM HI SP	41.0 °F	DEFROST	Off
		CASE ALM LO SP	-15.0 °F	PEAK DEF TEMP	66.2 °F
		COMB ALM HI SP	NONE °F	FAN	On
		COMB ALM LO SP	NONE °F	BYPASS STATE	NORMAL
		ACTIVE SETPT	-12.0 °F	ALARM OUT	..
				ALG STATUS	OK
				CASE ALM OUT 1	..

For Technical Support call 833-409-7505 or email ColdChain.TechnicalServices@Emerson.com

The contents of this publication are presented for informational purposes only and they are not to be construed as warranties or guarantees, express or implied, regarding the products or services described herein or their use or applicability. Emerson reserves the right to modify the designs or specifications of such products at any time without notice. Responsibility for proper selection, use and maintenance of any product remains solely with the purchaser and end-user. ©2022 Emerson is a trademark of Emerson Electric Co.