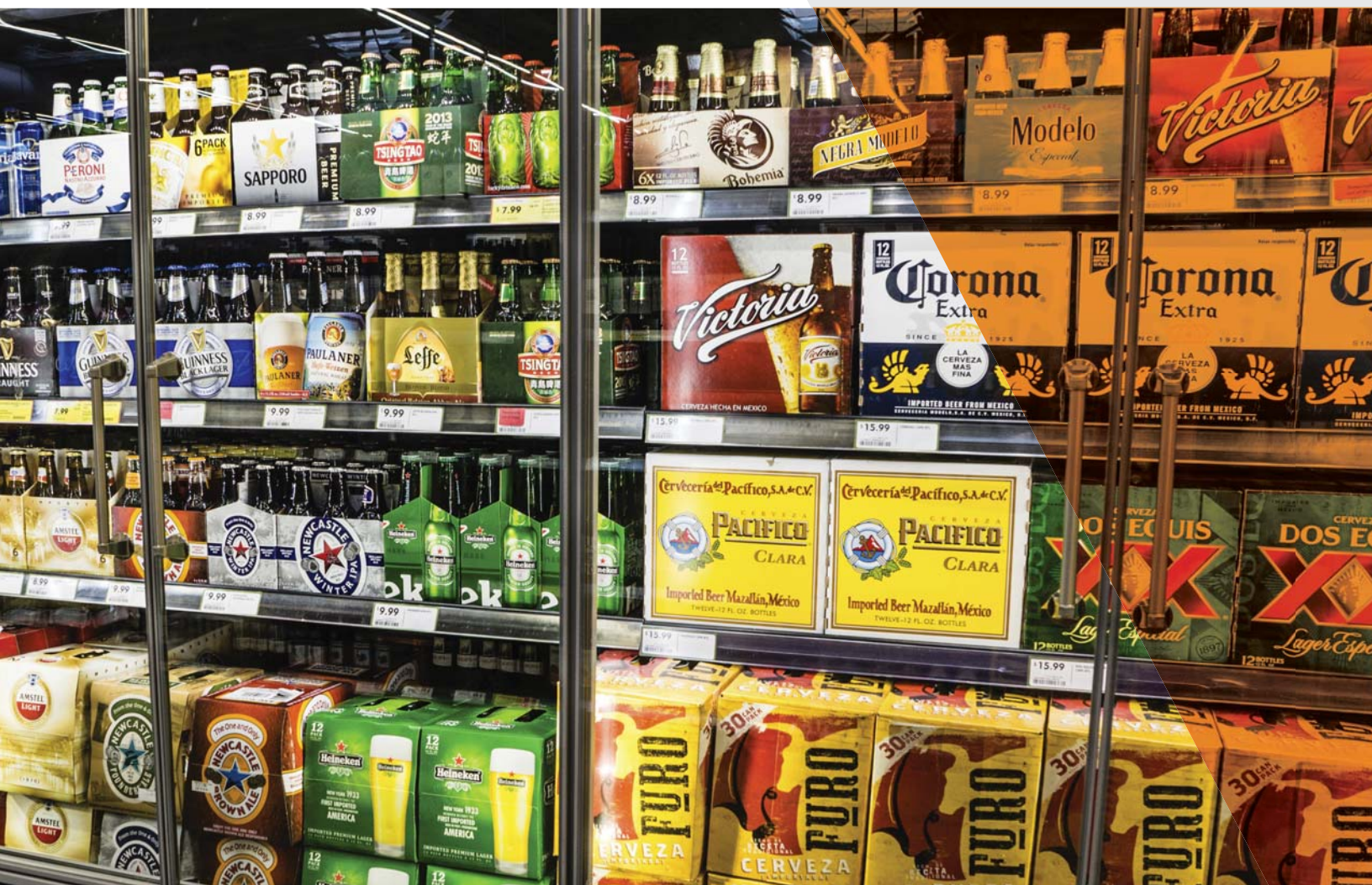


Life is full of hard choices

Choosing a condensing unit shouldn't be one of them.



Copeland™ fractional horsepower condensing units



Install confidence. It's your reputation.

In the fast paced world of retail establishments, servicing refrigeration equipment can be challenging. Customers are demanding, the work environment is less than optimal, and time is at a premium. Emerson Climate Technologies can help with the Copeland™ Value-Add line of condensing units.

Keep your customers happy

There are numerous refrigeration applications that utilize fractional horsepower sized condensing units. Reach-in cases, food prep tables, and under-counters are just a few examples. Servicing this equipment can be difficult due to limited space. Using a fractional unit with factory installed system protection devices saves on installation time and reduces disruptions to foodservice operations. You win and your customer wins.

Benefits for foodservice operators

- Less disruption to their business
- Less equipment downtime
- Increased equipment reliability
- No additional cost

Benefits for contractors

- Lower installation costs
- Fewer job site problems
- Lower warranty expense
- Reduced call backs
- Greater billing efficiency

Factory installed system protection

- Provides higher system reliability
- Provides a solution to working in restricted spaces

These fractional horsepower models offer factory installed filter driers and moisture indicators so there is no need to purchase these components separately.

To avoid installation issues be sure to select the appropriate condensing unit based on your application requirements and replacement needs.

How to choose the right condensing unit in 5 easy steps:

- 1 What is the application? (MT or LT)
- 2 What refrigerant is currently being used in the application?
- 3 What is the applied voltage?
- 4 What is the capacity/BTUs needed for the application?
- 5 What is the physical size?



Make your business more productive

A labor cost savings solution...a fractional horsepower condensing unit with factory installed components significantly reduces on-site tube prepping, brazing, supplies and materials. In addition, it diminishes the need for frequent leak inspections since all filter drier and moisture indicator braze joints have been factory tested. Fewer job site problems and fewer call backs. Units with pressure controls have the new Emerson™ Electronic Unit Control (EUC) that allows pressure settings to be set and verified in less than a minute.

Make your business more profitable

Fractional units reduce installation costs, reduce call backs and cut warranty expense. This translates into increased billing efficiency and a better bottom line. So the next time you replace a fractional horsepower condensing unit ask for one from Emerson Climate Technologies.

Selection guide

Medium/High Temperature														
1	H.P.	Model	3 Electrical	Std. BOM	Alternate BOM	4 Refrigerant BTUH @ 90°F Ambient /+25°F Evap			L	W	H	Suction	Liquid	Compressor
						R-404A	R-407C	R-448A/449A						
2 Medium Pressure Refrigerants	1/5	M6ZM-0021	IAA	177, 179	028, 078	1950	1760	1820	16.58	12.68	11.73	1/4	5/16	ASE12C4E
	1/4	M6JM-H028	IAA / IAV	177, 179	028, 078	2730	2810	2610	14.11	11.45	11.37	1/4	3/8	ASE20C4E
	1/3	M6JM-H035	IAA / IAV	177, 179	212, 272	3390	n/a	3350	14.39	11.57	11.37	1/4	3/8	ASE28C5E
	1/2	M6ZP-0053	IAA / IAV	177, 179	212, 272	4980	4360	4590	17.36	13.52	11.75	3/8	1/2	RST45C1E
	3/4	M6KP-0075	CAA / CAV	177, 179	020, 072, 212, 272	6660	5990	6430	24	16.41	13.08	3/8	3/8	RST55C1E
	1	M6KP-0102	CFA / CAV	177, 179	020, 072	9150	8660	8970	24	18.3	16.16	3/8	3/8	RST64C1E
	1 1/4	M6KP-0127	CFV	177, 179	020, 072	11000	9950	10500	24	18.45	16.16	3/8	1/2	RST80C1E
	1 1/2	M6KP-0142	CFV	177, 179	020, 072	11900	11100	11400	24	18.45	16.16	3/8	1/2	RST97C1E
Low Pressure Refrigerants						R-134a	R-450	R-513						
	1/8	M7JH-0012	IAA	177, 179	028, 078	1150	1010	1200	14.1	11.45	11.37	1/4	5/16	ARE13C4E
	1/5	M7JH-0018	IAA	177, 179	028, 078	1820	1610	1890	14.13	12.12	11.37	1/4	3/8	ARE25C4E
	1/4	M7JH-0026	IAA	177, 179	212, 272	2410	2140	2500	14.1	11.45	11.37	1/4	5/16	ARE35C5E
	1/3	M7JH-H029	IAA / IAV	177, 179	212, 272	2640	2320	2810	14.39	11.57	11.37	1/4	3/8	ARE35C5E
	1/2	M7ZH-H046	IAA / IAV	177, 179	212, 272	4210	3800	4440	17.45	13.46	11.71	3/8	1/2	RRT62C1E
	3/4	M7KH-0075	CFA / CFV	177, 179	020, 072, 212, 272	6720	6010	6850	24	16.27	13.08	1/4	5/8	RRT81C1E
	1	M7KH-0096	CFA / CFV	177, 179	020, 072	8440	7630	8570	24	18.45	16.16	3/8	1/2	RRT10K1E

Low Temperature														
1	H.P.	Model	Electrical	Std. BOM	Alternate BOM	Refrigerant BTUH @ 90°F Ambient /-10°F Evap			L	W	H	Suction	Liquid	Compressor
						R-404A	R-407C	R-448A/449A						
Medium Pressure Refrigerants	1/5	M6JL-0021	IAA	177, 179	028, 078	872	n/a	891	14.1	11.45	11.37	1/4	5/16	AFE08C4E
	1/4	M6JL-0026	IAA	177, 179	028, 078	1130	n/a	1020	14.1	11.45	11.37	1/4	5/16	AFE11C4E
	1/3	M6ZL-0031	IAA	177, 179	028, 078	1270	n/a	1090	16.58	12.68	11.73	1/4	5/16	AFE11C4E
	1/2	M6JL-H048	IAA / IAV	177, 179	212, 272 (IAA) / 028, 078 (IAV)	1940	n/a	1710	14.39	11.57	11.37	1/4	3/8	AFE17C4E
	3/4	M6ZL-0078	IAA / IAV	177, 179	212, 272	3130	n/a	2550	17.36	13.67	11.71	3/8	3/8	RFT26C1E
	1	M6KL-0101	CAA / CAV	177, 179	072	4060	n/a	3570	24	16.39	13.08	1/2	3/8	RFT32C1E
	1 1/4	M6KL-0123	CFA / CFV	177, 179	020, 072, 212, 272	4900	n/a	4250	24	16.39	13.08	3/8	3/8	RFT42C1E
Low Pressure Refrigerants						R-134a	R-450	R-513						
	1/5	M7JP-0020	IAA	177, 179	028, 078	825	709	874	14.37	12.11	11.38	1/4	5/16	AFF07C1E
	1/4	M7JP-0029	IAA / IA3	177, 179	028, 078	1230	1080	1310	14.37	12.11	11.38	1/4	5/16	AFF10C1E
	1/3	M7JP-0031	IAA / IA3	177, 179	028, 078	1400	1250	1500	14.37	12.11	11.38	1/4	5/16	AFF13C1E
1/2	M7GP-H066	CFA	177, 179	212, 272	2650	2410	3100	18.82	14.34	12.29	3/8	1/2	RFT18C1E	

Unit features

BOM	Suction Valve	Receiver w/Valve	Fan Guard	Filter Drier	Moisture Indicator	B/X Conduit	UL/UR	EUC
072	•	•	•	•	•	•	UL	•
272	•	•	•	•	•	•	UR	

Electric nomenclature

voltage-phase-hertz		
Motor Run Type	115-1-60	208/230-1-60
Capacitor Run (CAA/CFA, CAV/CFV)	CAA/CFA	CAV/CFV
Induction Run (IAA/IAV)	IAA	IAV

Cross reference

Nominal HP	Tecumseh		Danfoss		Embraco		Old Copeland™		New Copeland		
	Model	BTU	Model	BTU	Model	BTU	Model	BTU	Model	BTU	
R-404A MT/HT (25/90) Air Cooled											
1/4	AE4430Z*	2,170	OP-UCGC0025R	2150					M6JM-H023	2180	
	AE4440Z*	2,590						M4FH-0025	2430	M6JM-H028	2730
1/3			OP-HCGC0033R	3100	UNE6181GK	3306				M6ZM-0032	3080
	AKA9430Z*	3,400			UNE6195GK	3335	M4FH-A036	3370		M6JM-H035	3390
					UNE6210GK	3562				M6ZM-0038	3660
1/2			OP-HCGC0055R	4850	UNE9213GK	4525	M4FH-0050	4380		M6QM-H049	4250
	AKA9442Z*	5,150					M4FF-0056	5180		M6ZP-H059	5060
3/4					UT6217GK	5371				M6GP-H064	5490
	AKA9457Z*	6,300	OP-HCGC0075R	7150	UT6220GK	6810	M4FF-0075	6660		M6KP-0075	6660
1	AKA9463Z*	6,970			UT6222GK	6924	M4FF-0080	7640		M6KP-0092	7750
	AJA7480Z*	8,450	OPHCGC0100U	9950	U(N)J9226GK	8638	FJAF-0106	8500		M6KP-0102	9150
R-404A LT (-10/90) Air Cooled											
1/4	AEA9415Z*	835	OP-UCHC0020R	764				M4FL-H025	876	M6JL-0021	872
	AE2410Z.*	890									
1/3	AEA2411Z*	1340	OP-UCHC0025R	1303				M4FL-0033	1390	M6JL-H030	1240
	AEA2415Z.*	1370								M6ZL-0031	1270
	AE2415Z.*	1380									
	AEA2411Z*	1381									
1/2	AJA2422Z*	2180	OP-UCHC0050R	1959				M4FL-H051	2150	M6JL-H048	1940
					UT2155GK-	2330				M6ZL-0055	2350
3/4	AKA2430Z*	3364	OP-LCHC0060R	2941				M4FL-A067	3170	M6GL-H079	3280
	AJB2439Z*	3898	OP-LCHC0075U	3460	UT2178GK	3644	M4CL-0075	3790		M6GP-H090	4010
1	AJB2447Z*	4,649	OP-LCHC0100U	5329	U(N)J2212GK	4527	FJAF-0108	4690		M6KP-0106	4690
							FJAL-0105	4960		M6KL-0123	4900
R-134a (25/90) Air Cooled											
1/4	AEA4430Y*	2030	MCGA0020R	1860	UF10HBX	2272	M2FH-0026	2080		M7JH-0018	1820
	TPB9417Y*	2242	MCGB0025R	2095							
1/3	AEA4440Y*	2620	MCGB0033R	2717	UNE6210Z	2541	M2FH-A033	2620		M7JH-H029	2640
	TPB9423Y*	2911			UNE6187Z	2576	M2FH-H040	2860		M7JH-H038	3450
	AEA4448Y*	3060			UFU130HAX	3208					
					UF12HBX	3263					
1/2	AKA7437Y*	4080	MCGA0050R	4264				M2FH-H049	3690	M7JH-H042	3830
	AKA7437Y*	4700	OP-UCGC005R	4264	UT6213ZA	4002	M2FH-A050	4060		M7ZH-H046	4210
3/4			MCGB0055R	5009	UT6215Z	4540	M2FH-A056	5100		M7GH-H057	5060
	AJA7455Y*	6116			UJ6220Z	6168	M2FH-0074	6370		M7ZH-H067	6070