



# EMERSON™

## COMPRESSION TECHNOLOGY Product Specification

### HERMETIC RECIPROCATING COMPRESSOR **Model – CS13K7ME-TFM-XXX**

Status – Preliminary

Design Engineering & Solutions Testing Center, Karad - India  
**Emerson Climate Technologies (India) Private Limited**

			ECN No	F45-1120-0132
Shweta Chavan	Sunil Sutar	Mayur Nadgouda	Rev No / Date	A2 / 24.11.2020
Prepared By	Checked By	Approved By	Doc No– CS13K7ME-TFM-XXX	

**CS13K7ME-TFM-XXX**

R-404A, 50 Hz, 3 -Phase, 380-420 V

Medium Temperature

Production Status: Available for Sale for All Customers. Please check with your local Emerson Climate Technologies Representative for international availability.

**Performance**

**Mechanical**

<table border="0"> <tr><td>Evaporator Temp. (°F)</td><td>20</td><td></td></tr> <tr><td>Condensing Temp. (°F)</td><td>120</td><td></td></tr> <tr><td>Return Gas Temp. (°F)</td><td>40</td><td></td></tr> <tr><td>Liquid Temp. (°F)</td><td>120</td><td></td></tr> <tr><td>Capacity (Btu/hr)</td><td>11590</td><td></td></tr> <tr><td>Power (W):</td><td>1815</td><td></td></tr> <tr><td>Current (Amps)'</td><td>3.7</td><td></td></tr> <tr><td>EER (Btu/Wh):</td><td>6.4</td><td></td></tr> <tr><td>Mass Flow (lbs/hr):</td><td></td><td></td></tr> <tr><td><u>Sound Data :</u></td><td></td><td></td></tr> <tr><td>Sound Power (dBA):</td><td>72 Avg.</td><td>75Max.</td></tr> <tr><td>Vibration mils (peak-peak):</td><td>5</td><td></td></tr> <tr><td>Record Date:</td><td>15-Sep-20</td><td></td></tr> </table>	Evaporator Temp. (°F)	20		Condensing Temp. (°F)	120		Return Gas Temp. (°F)	40		Liquid Temp. (°F)	120		Capacity (Btu/hr)	11590		Power (W):	1815		Current (Amps)'	3.7		EER (Btu/Wh):	6.4		Mass Flow (lbs/hr):			<u>Sound Data :</u>			Sound Power (dBA):	72 Avg.	75Max.	Vibration mils (peak-peak):	5		Record Date:	15-Sep-20		<table border="0"> <tr><td>Displacement (in^3/Rev):</td><td>3.14</td></tr> <tr><td>Displacement(ft^3/hr)</td><td>327.08</td></tr> <tr><td>Overall Length (in):</td><td>10.68</td></tr> <tr><td>Overall Width (in):</td><td>9.54</td></tr> <tr><td>Overall Height (in):</td><td>14</td></tr> <tr><td>Mounting Length (in):</td><td>7.5</td></tr> <tr><td>Mounting Width (in):</td><td>7.5</td></tr> <tr><td>Mounting Height (in):</td><td>0.75</td></tr> <tr><td>Suction Size (in),Type:</td><td>1-1/4 SPUD</td></tr> <tr><td>Discharge Size (in),Type:</td><td>1 SPUD</td></tr> <tr><td>Initial Oil Charge (oz):</td><td>45</td></tr> <tr><td>Oil Recharge (oz)'</td><td>43</td></tr> <tr><td>Net Weight (lbs):</td><td>72</td></tr> <tr><td>Internal Free Volume(in^3):</td><td>500</td></tr> <tr><td>Horse Power:</td><td></td></tr> </table> <p>'Overall compressor height on Copeland Brand Product's specified mounting grommets.</p>	Displacement (in^3/Rev):	3.14	Displacement(ft^3/hr)	327.08	Overall Length (in):	10.68	Overall Width (in):	9.54	Overall Height (in):	14	Mounting Length (in):	7.5	Mounting Width (in):	7.5	Mounting Height (in):	0.75	Suction Size (in),Type:	1-1/4 SPUD	Discharge Size (in),Type:	1 SPUD	Initial Oil Charge (oz):	45	Oil Recharge (oz)'	43	Net Weight (lbs):	72	Internal Free Volume(in^3):	500	Horse Power:	
Evaporator Temp. (°F)	20																																																																					
Condensing Temp. (°F)	120																																																																					
Return Gas Temp. (°F)	40																																																																					
Liquid Temp. (°F)	120																																																																					
Capacity (Btu/hr)	11590																																																																					
Power (W):	1815																																																																					
Current (Amps)'	3.7																																																																					
EER (Btu/Wh):	6.4																																																																					
Mass Flow (lbs/hr):																																																																						
<u>Sound Data :</u>																																																																						
Sound Power (dBA):	72 Avg.	75Max.																																																																				
Vibration mils (peak-peak):	5																																																																					
Record Date:	15-Sep-20																																																																					
Displacement (in^3/Rev):	3.14																																																																					
Displacement(ft^3/hr)	327.08																																																																					
Overall Length (in):	10.68																																																																					
Overall Width (in):	9.54																																																																					
Overall Height (in):	14																																																																					
Mounting Length (in):	7.5																																																																					
Mounting Width (in):	7.5																																																																					
Mounting Height (in):	0.75																																																																					
Suction Size (in),Type:	1-1/4 SPUD																																																																					
Discharge Size (in),Type:	1 SPUD																																																																					
Initial Oil Charge (oz):	45																																																																					
Oil Recharge (oz)'	43																																																																					
Net Weight (lbs):	72																																																																					
Internal Free Volume(in^3):	500																																																																					
Horse Power:																																																																						
<b>Electrical</b>	<p><b>Capacitors</b></p> <table border="0"> <thead> <tr> <th>Type</th> <th>Part NO</th> <th>Low MFD</th> <th>High MFD</th> <th>Volts</th> <th>User Description</th> </tr> </thead> <tbody> <tr> <td>Start Capacitor</td> <td></td> <td></td> <td></td> <td></td> <td>Not Applicable</td> </tr> <tr> <td>Start Capacitor</td> <td></td> <td></td> <td></td> <td></td> <td>Not Applicable</td> </tr> <tr> <td>Run Capacitor</td> <td></td> <td></td> <td></td> <td></td> <td>Not Applicable</td> </tr> </tbody> </table>	Type	Part NO	Low MFD	High MFD	Volts	User Description	Start Capacitor					Not Applicable	Start Capacitor					Not Applicable	Run Capacitor					Not Applicable																																													
Type	Part NO	Low MFD	High MFD	Volts	User Description																																																																	
Start Capacitor					Not Applicable																																																																	
Start Capacitor					Not Applicable																																																																	
Run Capacitor					Not Applicable																																																																	
<table border="0"> <tr><td>LRA-High"(Amp):</td><td>28</td></tr> <tr><td>LRA Low" (Amp):</td><td>NA</td></tr> <tr><td>LRA-Half Winding (Amp):</td><td>NA</td></tr> <tr><td>MCC (Amps)</td><td>6.1</td></tr> <tr><td>Max Operating Current(Amp):</td><td></td></tr> <tr><td>RLA, MCC/1.4:use for contactor selection (Amp):</td><td>4.4</td></tr> <tr><td>RLA, MCC/1.56: use for breaker &amp; wire size selection (Amp):</td><td>3.9</td></tr> <tr><td>RPM</td><td>2900</td></tr> <tr><td>UL File No:</td><td>NA</td></tr> <tr><td>UL File Date:</td><td>NA</td></tr> </table> <p>'Low and High refer to the low and high nominal voltage ranges for which the motor is approved.</p>	LRA-High"(Amp):	28	LRA Low" (Amp):	NA	LRA-Half Winding (Amp):	NA	MCC (Amps)	6.1	Max Operating Current(Amp):		RLA, MCC/1.4:use for contactor selection (Amp):	4.4	RLA, MCC/1.56: use for breaker & wire size selection (Amp):	3.9	RPM	2900	UL File No:	NA	UL File Date:	NA																																																		
LRA-High"(Amp):	28																																																																					
LRA Low" (Amp):	NA																																																																					
LRA-Half Winding (Amp):	NA																																																																					
MCC (Amps)	6.1																																																																					
Max Operating Current(Amp):																																																																						
RLA, MCC/1.4:use for contactor selection (Amp):	4.4																																																																					
RLA, MCC/1.56: use for breaker & wire size selection (Amp):	3.9																																																																					
RPM	2900																																																																					
UL File No:	NA																																																																					
UL File Date:	NA																																																																					

**Alternate Applications**

<u>Refrigerant</u>	<u>Voltage</u>	<u>Phase</u>	<u>Freq (Hz)</u>	<u>Application</u>

**Rating Conditions**

40 °F Return Gas Temp  
 0K Subcooling  
 95 °F Ambient Air over

**Medium  
 Temperature**

**CS13K7ME-TFM-XXX**

**R404A**  
 Hermetic Reciprocating Compressor @ TFM  
 380-420-3-50

Declared as 65 °F Return Gas

50 Hz Operation

Condensing Temperature °C (°F)

(Sat. Dew Pt. Pressure, psig)

Evaporating Temperature °F (Sat. Dew Pt. Pressure, psig)

	-31.7 (-25)	-26.1 (-15)	-23.3 (-10)	-12.2(10)	-6.7 (20)	-1.1 (30)	1.7 (35)	5 (41)	7.2 (45)
<b>60 (140)</b>									
<b>C</b>			2471	5571	7535	9807	17003	19721	22440
<b>P</b>			1253	1679	1893	2102	2528	2671	2813
<b>A</b>			2.5	3.4	3.8	4.3	5.1	5.4	5.7
<b>M</b>									
<b>E</b>			2.0	3.3	4.0	4.7	6.7	7.4	8.0
<b>%</b>									
<b>54.4 (130)</b>									
<b>C</b>		2491	3262	7102	9520	12301	19699	22047	24394
<b>P</b>		1140	1251	1669	1861	2046	2360	2473	2587
<b>A</b>		2.3	2.5	3.4	3.8	4.1	4.8	5.0	5.2
<b>M</b>									
<b>E</b>		2.2	2.6	4.3	5.1	6.0	8.3	8.9	9.4
<b>%</b>									
<b>48.9 (120)</b>									
<b>C</b>	1665	3248	4164	8726	11590	14868	20931	23558	26186
<b>P</b>	905	1139	1250	1641	1815	1974	2262	2353	2444
<b>A</b>	1.8	2.3	2.5	3.3	3.7	4.0	4.6	4.8	5.0
<b>M</b>									
<b>E</b>	1.8	2.9	3.3	5.3	6.4	7.5	9.3	10.0	10.7
<b>%</b>									
<b>43.3 (110)</b>									
<b>C</b>	2290	4112	5169	10431	13727	17498	23380	26277	29174
<b>P</b>	904	1138	1243	1600	1751	1892	2130	2199	2267
<b>A</b>	1.8	2.3	2.5	3.2	3.5	3.8	4.3	4.5	4.6
<b>M</b>									
<b>E</b>	2.5	3.6	4.2	6.5	7.8	9.2	11.0	12.0	12.9
<b>%</b>									
<b>37.8 (100)</b>									
<b>C</b>	3022	5074	6266	12211	15931	20182	27076	29588	32100
<b>P</b>	905	1127	1224	1549	1682	1803	1975	2023	2114
<b>A</b>	1.8	2.3	2.5	3.1	3.4	3.7	4.0	4.1	4.3
<b>M</b>									
<b>E</b>	3.3	4.5	5.1	7.9	9.5	11.2	13.7	14.6	15.2
<b>%</b>									
<b>32 (90)</b>									
<b>C</b>	3852	6124	7447	14053	18188	22910	29990	34081	38171
<b>P</b>	896	1106	1198	1493	1609	1713	1896	1956	2016
<b>A</b>	1.8	2.2	2.4	3.0	3.3	3.5	3.8	4.0	4.1
<b>M</b>									
<b>E</b>	4.3	5.5	6.2	9.4	11.3	13.4	15.8	17.4	18.9
<b>%</b>									
<b>26.7 (80)</b>									
<b>C</b>	4771	7253	8701	15950	20490	25673	32975	37361	41748
<b>P</b>	882	1081	1167	1437	1538	1625	1828	1911	1957
<b>A</b>	1.8	2.2	2.4	2.9	3.1	3.3	3.7	3.9	4.0
<b>M</b>									
<b>E</b>	5.4	6.7	7.5	11.1	13.3	15.8	18.0	19.6	21.3
<b>%</b>									
<b>21.1 (70)</b>									
<b>C</b>	5769	8450	10020	17892	22827	28461	36087	40762	45438
<b>P</b>	866	1057	1138	1384	1472	1544	1747	1816	1849
<b>A</b>	1.8	2.1	2.3	2.8	3.0	3.1	3.5	3.7	3.7
<b>M</b>									
<b>E</b>	6.7	8.0	8.8	12.9	15.5	18.4	20.7	22.4	24.6
<b>%</b>									

C: Capacity (Btu/hr), P: Power {W}, A: Current (Amps}, M: Mass Flow (lb/hr), E: EER {Btu/Wh}, %: Isentropic Efficiency {%

Nominal Performance Values (+5%) based on 72 hours run in. Subject to change without notice. Current @ 230

**CS13K7ME-TFM-XXX**

R-404A, 50 Hz, 3 -Phase, 380-420 V

Medium Temperature

Production Status: Available for Sale for All Customers. Please check with your local Emerson Climate Technologies Representative for international availability

**Electrical Components**

Internal Protector	
Part No:	Usage Description
<u>Vendor Part Number</u>	<u>Vendor Name</u>
34HM-200-56	T1

Stator			
Part No:			
Resistance:	± 7%	Start Wdg:	Run Wdg: 4.96

Potential	
Part No:	Usage Description
<u>Vendor Part Number</u>	<u>Vendor Name</u>

Start Capacitor		
Part No:		Low MFD:0.00
Type:	Start Capacitor	High MFD:0.00
User Description:	High Torque	Volts: 0

Start Capacitor		
Part No:		Low MFD :
Type:	Start Capacitor	High MFD:
User Description:	High Torque	Volts

Run Capacitor		
Part No		Low MFD:0.00
Type	Run Capacitor	High MFD:0.00
User Description		Volts: 370

**CS13K7ME-TFM-XXX**

R-404A, 50 Hz, 3 -Phase, 380-420 V

Medium Temperature

Production Status: Available for Sale for All Customers. Please check with your local Emerson Climate Technologies Representative for international availability

**Service Parts**

<u>Reference</u>	<u>Component</u>	<u>Quantity</u>	<u>Description</u>	<u>Comment</u>
1	NA			
2	NA			
3	NA			

**CS13K7ME-TFM-XXX**

R-404A, 50 Hz, 3 -Phase, 380-420 V

Medium Temperature

Production Status: Please check with your local Emerson Climate Technologies Representative for international availability

### Accessories

<u>Category</u>	<u>Part Number</u>	<u>Description</u>
Crankcase Heater	018-0088-00	40 @ 240V
Electrical		
Miscellaneous		
Mounting		

**CS13K7ME-TFM-XXX**

R-404A, 50 Hz, 1 -Phase, 380-420 V

Medium Temperature

**METRIC UNIT**

Production Status: Available for Sale for All Customers. Please check with your local Emerson Climate Technologies Representative for international availability.

**Performance**

**Mechanical**

<table style="width: 100%; border-collapse: collapse;"> <tr><td>Evaporator Temp. (°C)</td><td style="text-align: right;">-6.7</td></tr> <tr><td>Condensing Temp. (°C)</td><td style="text-align: right;">48.9</td></tr> <tr><td>Return Gas Temp. (°C)</td><td style="text-align: right;">4.4</td></tr> <tr><td>Liquid Temp. (°C)</td><td style="text-align: right;">48.9</td></tr> <tr><td>Capacity (W)</td><td style="text-align: right;">3397</td></tr> <tr><td>Power (W):</td><td style="text-align: right;">1416</td></tr> <tr><td>Current (Amps)'</td><td style="text-align: right;">6.9</td></tr> <tr><td>COP (W/W):</td><td style="text-align: right;">2.4</td></tr> <tr><td>Mass Flow (lbs/hr):</td><td></td></tr> <tr><td colspan="2"><u>Sound Data :</u></td></tr> <tr><td>Sound Power (dBA):</td><td style="text-align: right;">74 Avg.      78 Max.</td></tr> <tr><td>Vibration mils (peak-peak):</td><td style="text-align: right;">3.5 Max</td></tr> <tr><td>Record Date:</td><td></td></tr> </table>	Evaporator Temp. (°C)	-6.7	Condensing Temp. (°C)	48.9	Return Gas Temp. (°C)	4.4	Liquid Temp. (°C)	48.9	Capacity (W)	3397	Power (W):	1416	Current (Amps)'	6.9	COP (W/W):	2.4	Mass Flow (lbs/hr):		<u>Sound Data :</u>		Sound Power (dBA):	74 Avg.      78 Max.	Vibration mils (peak-peak):	3.5 Max	Record Date:		<table style="width: 100%; border-collapse: collapse;"> <tr><td>Displacement (cc/Rev):</td><td style="text-align: right;">51.5</td></tr> <tr><td>Displacement(m<sup>3</sup>/hr):</td><td style="text-align: right;">9.3</td></tr> <tr><td>Overall Length (mm):</td><td style="text-align: right;">271</td></tr> <tr><td>Overall Width (mm):</td><td style="text-align: right;">242</td></tr> <tr><td>Overall Height (mm):</td><td style="text-align: right;">356</td></tr> <tr><td>Mounting Length (mm):</td><td style="text-align: right;">191</td></tr> <tr><td>Mounting Width (mm):</td><td style="text-align: right;">191</td></tr> <tr><td>Mounting Height (mm):</td><td style="text-align: right;">19</td></tr> <tr><td>Suction Size (mm), Type:</td><td style="text-align: right;">32 SPUD</td></tr> <tr><td>Discharge Size (mm), Type:</td><td style="text-align: right;">25 SPUD</td></tr> <tr><td>Initial Oil Charge (ml):</td><td style="text-align: right;">1331</td></tr> <tr><td>Oil Recharge (ml)'</td><td style="text-align: right;">1272</td></tr> <tr><td>Net Weight (kg):</td><td style="text-align: right;">32.7</td></tr> <tr><td>Internal Free Volume (cm<sup>3</sup>):</td><td style="text-align: right;">8194</td></tr> <tr><td colspan="2">Horse Power:</td></tr> <tr><td colspan="2">'Overall compressor height on Copeland Brand Product's specified mounting grommets.</td></tr> </table>	Displacement (cc/Rev):	51.5	Displacement(m <sup>3</sup> /hr):	9.3	Overall Length (mm):	271	Overall Width (mm):	242	Overall Height (mm):	356	Mounting Length (mm):	191	Mounting Width (mm):	191	Mounting Height (mm):	19	Suction Size (mm), Type:	32 SPUD	Discharge Size (mm), Type:	25 SPUD	Initial Oil Charge (ml):	1331	Oil Recharge (ml)'	1272	Net Weight (kg):	32.7	Internal Free Volume (cm <sup>3</sup> ):	8194	Horse Power:		'Overall compressor height on Copeland Brand Product's specified mounting grommets.	
Evaporator Temp. (°C)	-6.7																																																										
Condensing Temp. (°C)	48.9																																																										
Return Gas Temp. (°C)	4.4																																																										
Liquid Temp. (°C)	48.9																																																										
Capacity (W)	3397																																																										
Power (W):	1416																																																										
Current (Amps)'	6.9																																																										
COP (W/W):	2.4																																																										
Mass Flow (lbs/hr):																																																											
<u>Sound Data :</u>																																																											
Sound Power (dBA):	74 Avg.      78 Max.																																																										
Vibration mils (peak-peak):	3.5 Max																																																										
Record Date:																																																											
Displacement (cc/Rev):	51.5																																																										
Displacement(m <sup>3</sup> /hr):	9.3																																																										
Overall Length (mm):	271																																																										
Overall Width (mm):	242																																																										
Overall Height (mm):	356																																																										
Mounting Length (mm):	191																																																										
Mounting Width (mm):	191																																																										
Mounting Height (mm):	19																																																										
Suction Size (mm), Type:	32 SPUD																																																										
Discharge Size (mm), Type:	25 SPUD																																																										
Initial Oil Charge (ml):	1331																																																										
Oil Recharge (ml)'	1272																																																										
Net Weight (kg):	32.7																																																										
Internal Free Volume (cm <sup>3</sup> ):	8194																																																										
Horse Power:																																																											
'Overall compressor height on Copeland Brand Product's specified mounting grommets.																																																											
<b>Electrical</b>																																																											
<table style="width: 100%; border-collapse: collapse;"> <tr><td>LRA-High"(Amp):</td><td style="text-align: right;">28</td></tr> <tr><td>LRA Low" (Amp):</td><td style="text-align: right;">NA</td></tr> <tr><td>LRA-Half Winding (Amp):</td><td style="text-align: right;">NA</td></tr> <tr><td>MCC (Amps)</td><td style="text-align: right;">6.1</td></tr> <tr><td>Max Operating Current(Amp):</td><td></td></tr> <tr><td>RLA, MCC/1.4:use for contactor selection (Amp):</td><td style="text-align: right;">4.4</td></tr> <tr><td>RLA, MCC/1.56:use for breaker &amp; wire size selection (Amp):</td><td style="text-align: right;">3.9</td></tr> <tr><td>RPM</td><td style="text-align: right;">2900</td></tr> <tr><td>UL File No:</td><td style="text-align: right;">NA</td></tr> <tr><td>UL File Date:</td><td style="text-align: right;">NA</td></tr> <tr><td colspan="2">'Low and High refer to the low and high nominal voltage ranges for which the motor is approved.</td></tr> </table>	LRA-High"(Amp):	28	LRA Low" (Amp):	NA	LRA-Half Winding (Amp):	NA	MCC (Amps)	6.1	Max Operating Current(Amp):		RLA, MCC/1.4:use for contactor selection (Amp):	4.4	RLA, MCC/1.56:use for breaker & wire size selection (Amp):	3.9	RPM	2900	UL File No:	NA	UL File Date:	NA	'Low and High refer to the low and high nominal voltage ranges for which the motor is approved.		<p><b>Capacitors</b></p> <table style="width: 100%; border-collapse: collapse;"> <thead> <tr> <th style="text-align: left;"><u>Type</u></th> <th style="text-align: left;"><u>Part NO</u></th> <th style="text-align: left;"><u>Low MFD</u></th> <th style="text-align: left;"><u>High MFD</u></th> <th style="text-align: left;"><u>Volts</u></th> <th style="text-align: left;"><u>User Description</u></th> </tr> </thead> <tbody> <tr> <td>Start Capacitor</td> <td>Not Applicable</td> <td>NA</td> <td></td> <td></td> <td></td> </tr> <tr> <td>Start Capacitor</td> <td>Not Applicable</td> <td>NA</td> <td></td> <td></td> <td></td> </tr> <tr> <td>Run Capacitor</td> <td>Not Applicable</td> <td>NA</td> <td></td> <td></td> <td></td> </tr> </tbody> </table>	<u>Type</u>	<u>Part NO</u>	<u>Low MFD</u>	<u>High MFD</u>	<u>Volts</u>	<u>User Description</u>	Start Capacitor	Not Applicable	NA				Start Capacitor	Not Applicable	NA				Run Capacitor	Not Applicable	NA															
LRA-High"(Amp):	28																																																										
LRA Low" (Amp):	NA																																																										
LRA-Half Winding (Amp):	NA																																																										
MCC (Amps)	6.1																																																										
Max Operating Current(Amp):																																																											
RLA, MCC/1.4:use for contactor selection (Amp):	4.4																																																										
RLA, MCC/1.56:use for breaker & wire size selection (Amp):	3.9																																																										
RPM	2900																																																										
UL File No:	NA																																																										
UL File Date:	NA																																																										
'Low and High refer to the low and high nominal voltage ranges for which the motor is approved.																																																											
<u>Type</u>	<u>Part NO</u>	<u>Low MFD</u>	<u>High MFD</u>	<u>Volts</u>	<u>User Description</u>																																																						
Start Capacitor	Not Applicable	NA																																																									
Start Capacitor	Not Applicable	NA																																																									
Run Capacitor	Not Applicable	NA																																																									

**Alternate Applications**

<u>Refrigerant</u>	<u>Voltage</u>	<u>Phase</u>	<u>Freq (Hz)</u>	<u>Application</u>

**Rating Conditions**

40 °F Superheat  
 0 Subcooling  
 95 °F Ambient Air Over

**Medium Temperature**

**CS13K7ME-TFM-XXX**

**R404A**  
 Hermetic Reciprocating Compressor @ PFV  
 380/420-1-50

Declared as 65 °F Return Gas

50 Hz Operation

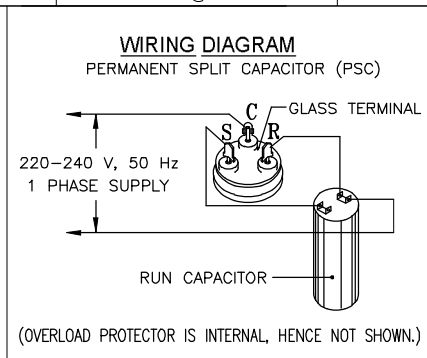
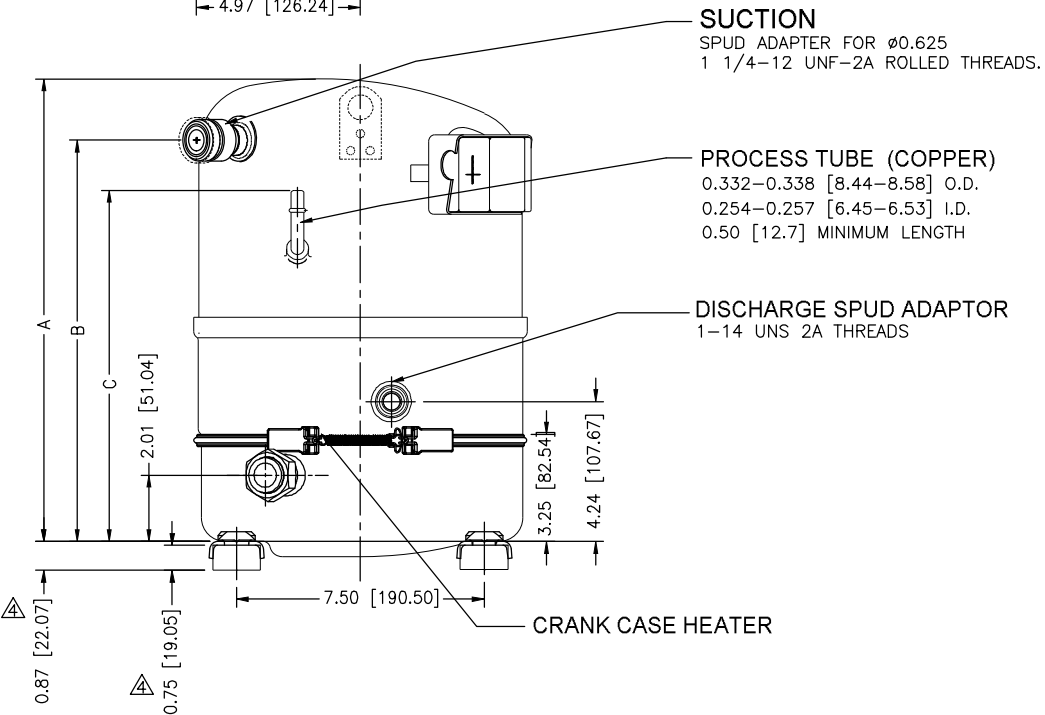
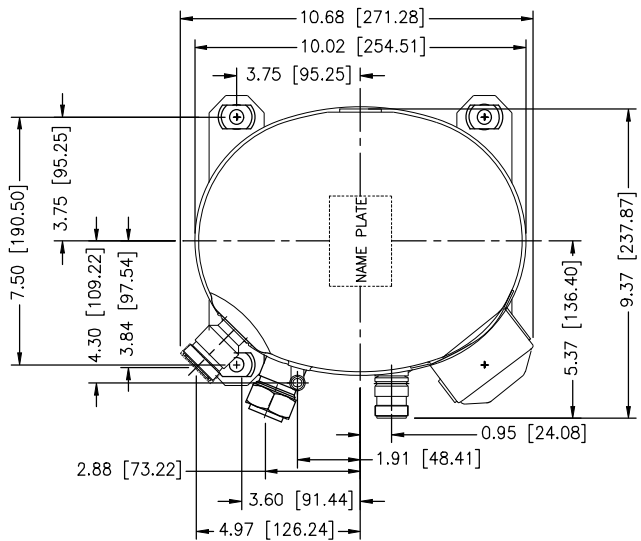
Condensing Temperature °C (°F)

Evaporating Temperature °C (°F)

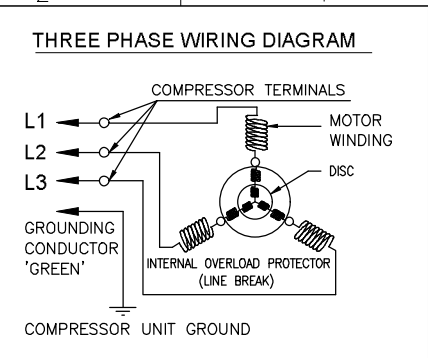
	-31.1(-25)	-26.1(-15)	-23.3(-10)	-12.2(10)	-6.7(20)	-1.1(30)	-1.7(35)	5(41)	7.2(45)
<b>60(140)</b>									
<b>C</b>			724	1633	2208	2882	4983	5780	6576
<b>P</b>			981	1311	1479	1643	1976	2087	2199
<b>A</b>			4.8	6.4	7.2	8.0	9.7	10.2	10.7
<b>M</b>									
<b>E</b>			0.7	1.2	1.5	1.8	2.5	2.8	3.0
<b>%</b>									
<b>54.4(130)</b>									
<b>C</b>		730	956	2081	2790	3609	5773	6461	7149
<b>P</b>		892	980	1304	1454	1599	1844	1933	2022
<b>A</b>		4.4	4.8	6.4	7.1	7.8	9.0	9.4	9.9
<b>M</b>									
<b>E</b>		0.8	1.0	1.6	1.9	2.3	3.1	3.3	3.5
<b>%</b>									
<b>48.9(120)</b>									
<b>C</b>	488	952	1220	2557	3397	4359	6134	6904	7674
<b>P</b>	708	891	977	1283	1416	1542	1767	1838	1909
<b>A</b>	3.5	4.4	4.8	6.3	6.9	7.5	8.6	9.0	9.3
<b>M</b>									
<b>E</b>	0.7	1.1	1.2	2.0	2.4	2.8	3.5	3.8	4.0
<b>%</b>									
<b>43.3(110)</b>									
<b>C</b>	671	1205	1515	3057	4023	5130	6852	7701	8550
<b>P</b>	707	890	972	1250	1368	1478	1664	1717	1771
<b>A</b>	3.5	4.3	4.7	6.1	6.7	7.2	8.1	8.4	8.7
<b>M</b>									
<b>E</b>	0.9	1.4	1.6	2.4	2.9	3.5	4.1	4.5	4.8
<b>%</b>									
<b>37.8(100)</b>									
<b>C</b>	886	1487	1836	3579	4669	5915	7935	8671	9408
<b>P</b>	709	881	958	1211	1314	1409	1544	1581	1652
<b>A</b>	3.5	4.3	4.7	5.9	6.4	6.9	7.5	7.7	8.1
<b>M</b>									
<b>E</b>	1.2	1.7	1.9	3.0	3.6	4.2	5.1	5.5	5.7
<b>%</b>									
<b>32.0(90)</b>									
<b>C</b>	1129	1795	2183	4119	5330	6711	8789	9988	11187
<b>P</b>	702	866	937	1167	1258	1338	1481	1528	1575
<b>A</b>	3.4	4.2	4.6	5.7	6.1	6.5	7.2	7.5	7.7
<b>M</b>									
<b>E</b>	1.6	2.1	2.3	3.5	4.2	5.0	5.9	6.5	7.1
<b>%</b>									
<b>26.7(80)</b>									
<b>C</b>	1398	2126	2550	4674	6005	7513	9664	10950	12235
<b>P</b>	691	846	913	1123	1202	1270	1429	1493	1530
<b>A</b>	3.4	4.1	4.5	5.5	5.9	6.2	7.0	7.3	7.5
<b>M</b>									
<b>E</b>	2.0	2.5	2.8	4.2	5.0	5.9	6.8	7.3	8.0
<b>%</b>									
<b>21.1(70)</b>									
<b>C</b>	1691	2476	2937	5244	6690	8316	10576	11946	13316
<b>P</b>	678	827	890	1083	1151	1208	1367	1421	1447
<b>A</b>	3.3	4.0	4.3	5.3	5.6	5.9	6.7	6.9	7.1
<b>M</b>									
<b>E</b>	2.5	3.0	3.3	4.8	5.8	6.9	7.7	8.4	9.2
<b>%</b>									

C: Capacity (Btu/hr), P: Power {W}, A: Current (Amps), M: Mass Flow (lb/hr), E: EER {W/W}, %: Isentropic Efficiency (%)  
 Nominal Performance Values (+5%) based on 72 hours run in. Subject to change without notice. Current @ 230V





VIEW 'P'



VIEW 'Q'

- NOTES :**
1. FOOT MOUNTING BOLT TORQUE SHOULD NOT EXCEED 12 lb-ft (16.27 N-m).
  2. COMPRESSOR COLOUR - BLACK.
  3. BRACKETED DIMENSIONS ARE IN mm.
  4. RUBBER GROMMET MAY COMPRESS BY 0.075 [1.91] ±0.025 [0.63] APPROXIMATELY DUE TO COMPRESSOR WEIGHT. THE RELATED DIMENSIONS MAY VARY ACCORDINGLY.
  5. FOR PERFORMANCE DETAILS, REFER PRODUCT SPECIFICATION.

**GUIDELINES FOR HANDLING AND DISPOSAL OF PRODUCTS :**

1. HANDLE PRODUCT WITH CARE AND IN UPRIGHT POSITION TO AVOID SPILLAGE OF COMPRESSOR OIL.
2. DISPOSE OFF RUBBER TUBE PLUGS THROUGH GOVERNMENT AUTHORIZED SCRAP CENTERS.
3. IF PRODUCT IS TO BE DISPOSED OFF THEN, PLEASE DO IT THROUGH GOVERNMENT AUTHORISED SCRAP CENTERS.

PRELIMINARY

	<small>INTERPRET PER ASME Y14.5M-1994 AND EMERSON DESIGN STANDARDS DS2002</small> <b>DO NOT SCALE DRAWING</b>		<small>CONFIDENTIALITY NOTICE</small> THIS DRAWING AND INFORMATION CONTAINED HEREIN ARE THE EXCLUSIVE PROPERTY OF EMERSON CLIMATE TECHNOLOGIES, INC. AND/OR ITS AFFILIATES COLLECTIVELY EMERSON AND SHALL BE RETURNED UPON DEMAND AND SHALL NOT BE REPRODUCED IN WHOLE OR IN PART, DISCLOSED TO ANYONE ELSE OR USED, WITHOUT THE WRITTEN CONSENT OF EMERSON.		
	<small>CRITICAL PRODUCT CHARACTERISTIC</small> UNLESS OTHERWISE SPECIFIED DIMENSIONS ARE INCH OR [MILLIMETER] TOLERANCES: 2-PLACE ± 0.005 3-PLACE ± 0.005 ANGULAR ± 0.3°	<small>DATE</small> 10.10.2020	<small>SCALE</small> 1:2	<small>DATE FORMAT</small> MM-DD-YY	<small>SHEET</small> 1 OF 2
	<small>TITLE</small> REF DWG-WELD COMP ASSM		<small>DRAWING NUMBER</small> T012-497-A033-00		<small>DWG SIZE</small> 4

COPYRIGHT EMERSON - CONFIDENTIAL

8	7	6	5	4	3	2	1
MODEL	TOTAL HEIGHT 'A'	SUCTION HEIGHT 'B'	PROCESS HEIGHT 'C'	WIRING DIAGRAM	CRANKCASE HEATER		
CS10K7ME-PFZ-137	13.00	11.15	11.77	VIEW 'P'	40@ 240		
CS10K7ME-TFM-13A	13.24	11.38	10.25	VIEW 'Q'	40@ 240		
CS13K7ME-PFZ-137	13.75	11.90	10.52	VIEW 'P'	40@ 240		
CS13K7ME-TFM-13A	13.24	11.38	10.25	VIEW 'Q'	40@ 240		
CS17K7ME-PFZ-137	13.75	11.90	10.52	VIEW 'P'	40@ 240		
CS17K7ME-TFM-13A	13.50	11.65	10.52	VIEW 'Q'	40@ 240		
CS20K7ME-PFZ-137	14.26	12.40	12.87	VIEW 'P'	40@ 240		
CS20K7ME-TFM-13A	14.00	12.15	10.52	VIEW 'Q'	40@ 240		

PRELIMINARY



INTERPRET PER ASME  
Y14.5M-1994 AND  
EMERSON DESIGN  
STANDARDS DS3002

DO NOT SCALE DRAWING

CRITICAL PRODUCT CHARACTERISTIC

UNLESS OTHERWISE SPECIFIED  
DIMENSIONS ARE INCH OR (MILLIMETER)

TOLERANCES:  
2-PLACE ± 0.005  
3-PLACE ± 0.005  
ANGULAR ± 0.3°

ECN	2	DRAWING UPDATED.	10.29.20	DVM	MMN
ECN	1	MODEL NAME UPDATED.	10.14.20	DVM	MMN
ECN	0	RELEASED	10.10.20	DVM	MMN
ENG NOTICE NO.	REV.NO.	REVISIONS	DATE	BY	CHKD
35		CONFIDENTIALITY NOTICE THIS DRAWING AND INFORMATION CONTAINED HEREIN ARE THE EXCLUSIVE PROPERTY OF EMERSON CLIMATE TECHNOLOGIES, INC. AND/OR ITS AFFILIATES (COLLECTIVELY "EMERSON") AND SHALL BE RETURNED UPON DEMAND AND SHALL NOT BE REPRODUCED IN WHOLE OR IN PART, DISCLOSED TO ANYONE ELSE OR USED, WITHOUT THE WRITTEN CONSENT OF EMERSON.			
MATERIAL SPECIFICATION		DRAWN BY DVM	SUPERSEDES DWG. NO. / REV. NO. ---- / ----		
DATE 10.10.2020		SCALE 1:2	DATE FORMAT: MM-DD-YY		
TITLE REF DWG-WELD COMP ASSM			DRAWING NUMBER	SHEET 1 OF 1	DWG 4 SIZE
			T012-497-A033-00		

UNCONTROLLED COPY - DO NOT MODIFY

© COPYRIGHT EMERSON | CONFIDENTIAL