



## 50Hz Water cooled semi-hermetic condensing units

Product catalogue

**COPELAND™**

  
**EMERSON™**

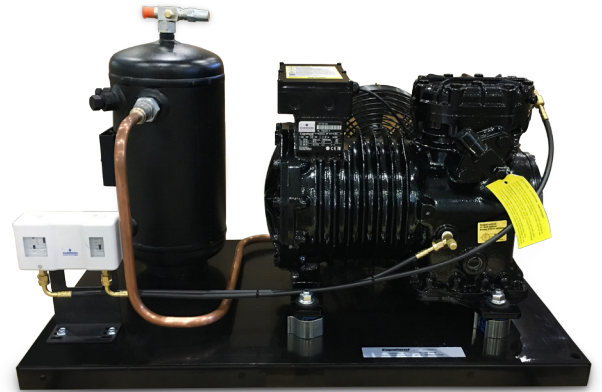


## General information

The WH range of water cooled condensing units are suitable for medium and low temperature refrigeration applications:

Medium Temperature                      WDH R134a, WMH R404a  
 Low Temperature                         WDH R404a

The high side heat exchangers are specifically designed for chilled water loops.



## Features

### Copeland semi-hermetic compressor

- Suction and discharge valves
- Oil sight Glass
- Mounting springs
- Motor protection by INT69 thermistor module
- Discharge vibration eliminator
- Side mounted compressor fan for optimal compressor cooling
- POE Oil
- Internal oil pump for enhanced lubrication

### Tube in Shell Hermetic Condenser

- Shell and connections : carbon steel
- Tube : copper
- Built in receiver
- Refrigerant side connections : rotalock type
- 1/2" NPT provision for safety relief valve
- Compliant to PED 97/23/EC Directive
- Maximum Pressure Limits  
 : Refrigerant side 30 bar  
 : Water side 10 bar

### Compressor cooling fan

- External rotor, axial fan with guard grill ( Form V )
- 230V single phase
- Power / Current Input: 72 W / 0.53 A
- Fan pre-wired to compressor terminal box

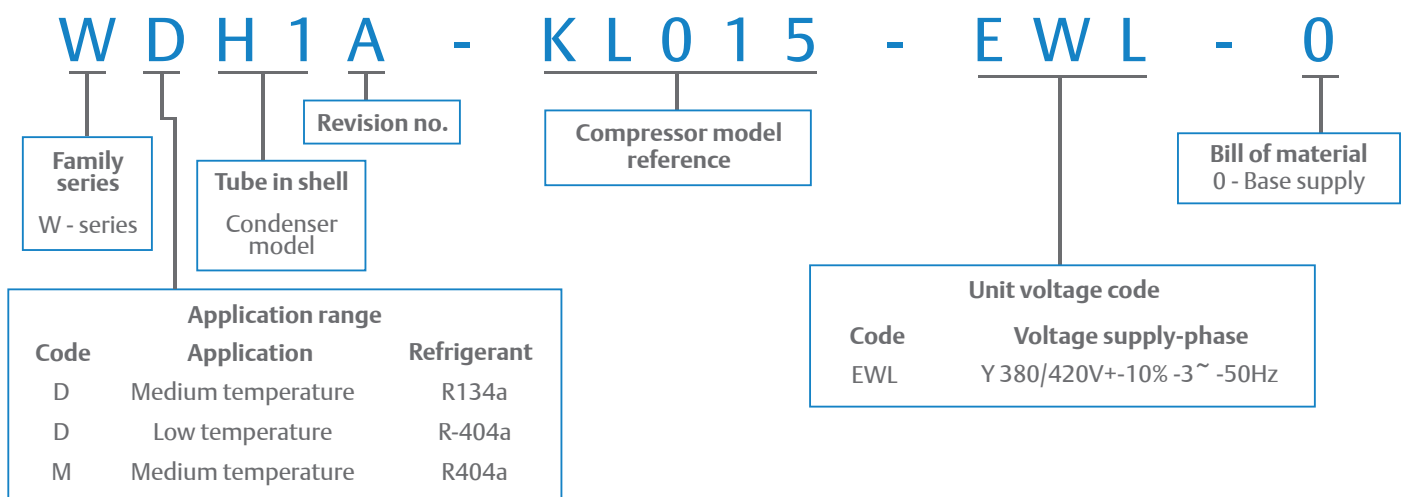
### Accessories

- HP/LP dual pressure safety switch, auto reset

### Capacity Data

- Units are rated at 30 °C Condensing, 3K Sub Cooling, 20°C Suction Gas Return, 7 °C Water Inlet Temperature

## Nomenclature



# Performance data

Condensing unit model		R404a					R134a				
		Evaporating temperature (°C)									
		-40	-35	-30	-25	-20	-15	-10	-5	0	5
WDH1A-KJ007-EWL	Capacity (kW)	0.75	1.03	1.36	1.75	2.21	1.49	1.90	2.39	2.95	3.61
	Power Input (kW)	0.64	0.72	0.78	0.85	0.90	0.58	0.61	0.64	0.66	0.66
	Flowrate (l/s)	0.02	0.03	0.04	0.05	0.06	0.04	0.05	0.06	0.07	0.09
	Pressure Drop (kPa)	0.08	0.17	0.26	0.42	0.62	0.22	0.37	0.56	0.86	1.38
WDH1A-SJ010-EWL	Capacity (kW)	1.00	1.34	1.75	2.23	2.79	1.82	2.31	2.89	3.56	4.35
	Power Input (kW)	0.83	0.92	1.01	1.10	1.18	0.70	0.75	0.79	0.81	0.82
	Flowrate (l/s)	0.03	0.04	0.05	0.06	0.08	0.05	0.06	0.07	0.09	0.12
	Pressure Drop (kPa)	0.17	0.26	0.41	0.67	1.15	0.37	0.56	0.86	1.47	2.33
WDH1A-KL015-EWL	Capacity (kW)	1.17	1.56	2.03	2.58	3.22	2.12	2.68	3.35	4.13	5.03
	Power Input (kW)	0.91	1.01	1.11	1.21	1.31	0.86	0.92	0.97	1.00	1.02
	Flowrate (l/s)	0.04	0.05	0.06	0.08	0.10	0.05	0.07	0.09	0.11	0.15
	Pressure Drop (kPa)	0.22	0.37	0.62	1.00	1.64	0.46	0.80	1.30	2.12	3.49
WDH1A-SL020-EWL	Capacity (kW)	1.44	1.93	2.53	3.24	4.07	2.69	3.41	4.26	5.26	6.43
	Power Input (kW)	1.04	1.21	1.38	1.55	1.72	1.05	1.14	1.22	1.28	1.32
	Flowrate (l/s)	0.04	0.06	0.08	0.11	0.14	0.07	0.09	0.12	0.16	0.22
	Pressure Drop (kPa)	0.33	0.56	1.00	1.83	3.12	0.86	1.47	2.43	4.15	7.34
WDH2A-LF020-EWL	Capacity (kW)	1.53	2.24	3.07	4.06	5.22	3.59	4.61	5.82	7.23	8.87
	Power Input (kW)	1.14	1.38	1.62	1.86	2.11	1.29	1.41	1.50	1.57	1.60
	Flowrate (l/s)	0.04	0.06	0.08	0.11	0.15	0.08	0.11	0.14	0.19	0.26
	Pressure Drop (kPa)	0.32	0.70	1.33	2.50	4.47	1.42	2.38	4.15	7.34	12.87
WDH2A-LJ020-EWL	Capacity (kW)	1.82	2.69	3.71	4.92	6.34	4.09	5.20	6.51	8.05	9.83
	Power Input (kW)	1.33	1.62	1.91	2.19	2.46	1.63	1.74	1.84	1.91	1.95
	Flowrate (l/s)	0.05	0.07	0.10	0.14	0.21	0.10	0.13	0.17	0.23	0.32
	Pressure Drop (kPa)	0.46	0.99	2.15	4.15	8.17	1.92	3.27	5.82	10.16	18.56
WDH3A-LL030-EWL	Capacity (kW)	2.52	3.61	4.90	6.43	8.20	5.17	6.63	8.37	10.40	12.75
	Power Input (kW)	1.70	2.05	2.39	2.74	3.07	1.96	2.13	2.27	2.39	2.48
	Flowrate (l/s)	0.06	0.08	0.12	0.17	0.23	0.11	0.14	0.19	0.26	0.36
	Pressure Drop (kPa)	0.84	1.71	3.45	6.54	12.41	2.85	4.96	8.76	15.64	28.68
WDH4A-SG040-EWL	Capacity (kW)	3.34	4.66	6.24	8.09	10.25	6.67	8.48	10.60	13.10	16.00
	Power Input (kW)	2.19	2.60	3.01	3.41	3.80	2.37	2.60	2.79	2.96	3.09
	Flowrate (l/s)	0.07	0.09	0.13	0.17	0.24	0.12	0.16	0.21	0.27	0.36
	Pressure Drop (kPa)	1.62	2.96	5.53	9.67	17.05	4.66	7.99	13.10	21.83	36.73



## Performance data

Condensing unit model		R404a				
		Evaporating temperature (°C)				
		-15	-10	-5	0	5
WMH1A-KM007-EWL	Capacity (kW)	2.04	2.52	3.07	3.69	4.40
	Power Input (kW)	0.76	0.79	0.81	0.80	0.78
	Flowrate (l/s)	0.06	0.07	0.08	0.11	0.13
	Pressure Drop (kPa)	0.51	0.80	1.15	1.83	2.77
WMH1A-KJ010-EWL	Capacity (kW)	2.79	3.44	4.18	5.03	5.99
	Power Input (kW)	1.04	1.10	1.15	1.17	1.17
	Flowrate (l/s)	0.08	0.10	0.13	0.17	0.21
	Pressure Drop (kPa)	1.07	1.73	2.77	4.44	7.17
WMH1A-SJ015-EWL	Capacity (kW)	3.47	4.26	5.16	6.20	7.37
	Power Input (kW)	1.35	1.42	1.46	1.47	1.42
	Flowrate (l/s)	0.11	0.14	0.18	0.24	0.32
	Pressure Drop (kPa)	1.92	3.12	5.18	8.87	15.43
WMH3A-LE020-EWL	Capacity (kW)	5.16	6.45	7.94	9.66	11.65
	Power Input (kW)	1.72	1.84	1.94	2.02	2.05
	Flowrate (l/s)	0.11	0.15	0.20	0.26	0.35
	Pressure Drop (kPa)	3.14	5.34	9.01	15.35	27.09
WMH4A-LF030-EWL	Capacity (kW)	7.22	8.92	10.85	13.05	15.60
	Power Input (kW)	2.41	2.54	2.63	2.68	2.69
	Flowrate (l/s)	0.14	0.18	0.23	0.30	0.39
	Pressure Drop (kPa)	6.47	10.26	16.30	26.29	42.94

## Mechanical data

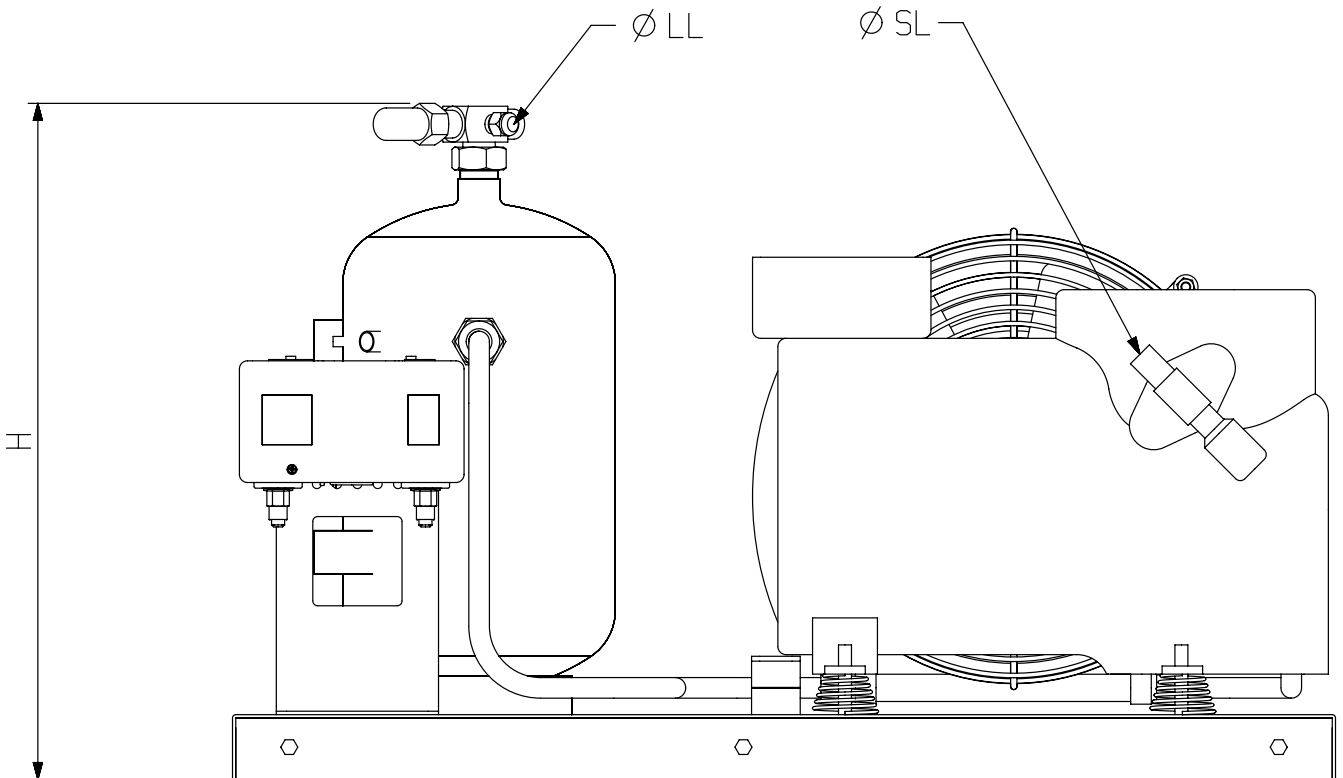
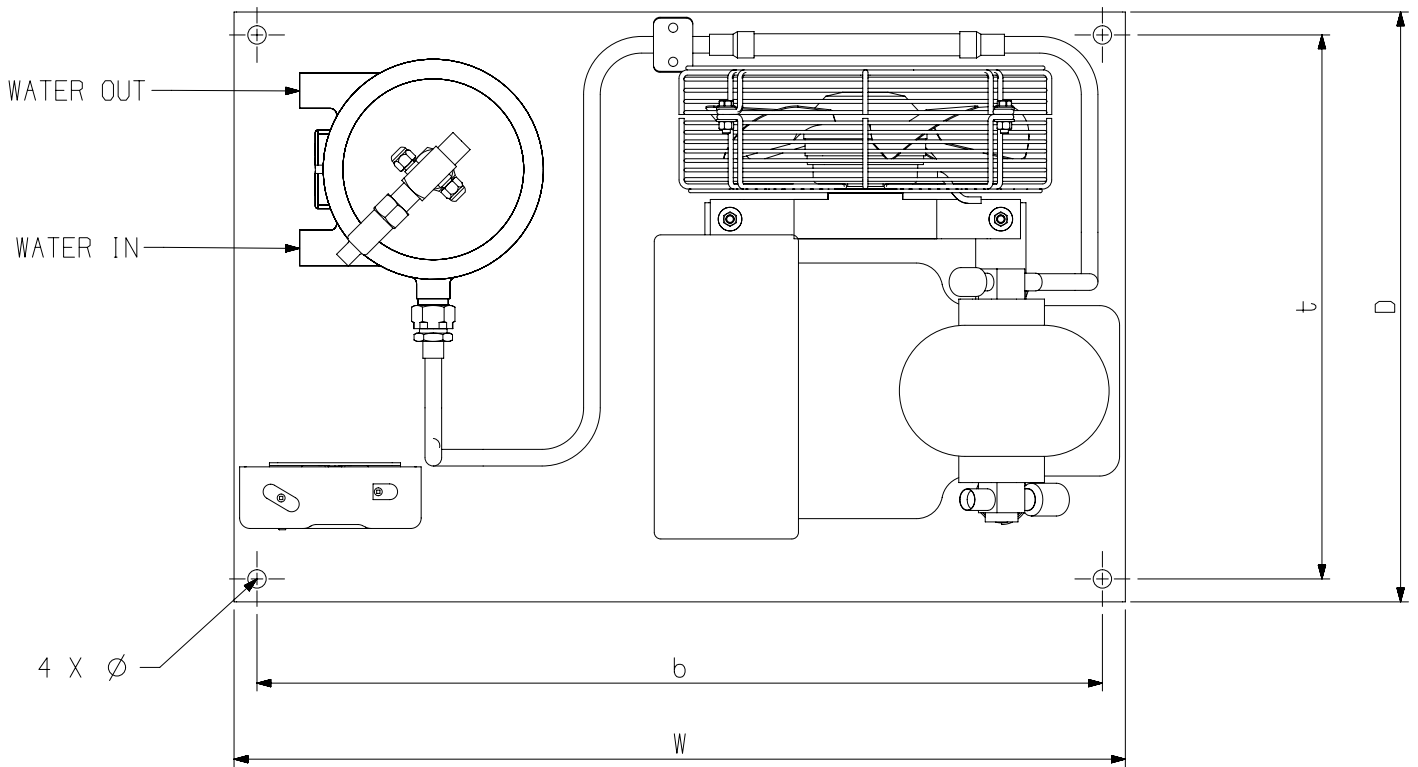
Condensing unit model	Compressor model	Receiver capacity (l)	Width/depth [W/D] (mm)	Base mounting Ø [b x t] (mm)	Height [H] (mm)	Suction Ø [SL] (")	Liquid Ø [LL] (")	Water inlet (")	Water outlet (")	Net weight (kg)	Gross weight (kg)
WDH1A-KJ007-EWL	KJ-7X-EWL	4.6	680/450	645 x 415 (14)	417	5/8	1/2	G 1/2	G 1/2	61	76
WDH1A-SJ010-EWL	KSJ-10X-EWL	4.6	680/450	645 x 415 (14)	417	5/8	1/2	G 1/2	G 1/2	61	76
WDH1A-KL015-EWL	KL-15X-EWL	4.6	680/450	645 x 415 (14)	417	5/8	1/2	G 1/2	G 1/2	61	76
WDH1A-SL020-EWL	KSL-20X-EWL	4.6	680/450	645 x 415 (14)	417	5/8	1/2	G 1/2	G 1/2	61	76
WDH2A-LF020-EWL	LF-20X-EWL	4.6	820/506	785 x 415 (14)	425	7/8	1/2	G 1/2	G 1/2	105	120
WDH2A-LJ020-EWL	LJ-20X-EWL	4.6	820/506	785 x 415 (14)	425	7/8	1/2	G 1/2	G 1/2	105	120
WDH3A-LL030-EWL	LL-30X-EWL	8.1	820/506	785 x 415 (14)	527	1 1/8	1/2	G 1/2	G 1/2	113	128
WDH4A-SG040-EWL	LSG-40X-EWL	8.1	820/506	785 x 415 (14)	527	1 1/8	1/2	G 1/2	G 1/2	113	128
WMH1A-KM007-EWL	KM-7X-EWL	4.6	680/450	645 x 415 (14)	417	1/2	1/2	G 1/2	G 1/2	61	76
WMH1A-KJ010-EWL	KJ-10X-EWL	4.6	680/450	645 x 415 (14)	417	5/8	1/2	G 1/2	G 1/2	61	76
WMH1A-SJ015-EWL	KSJ-15X-EWL	4.6	680/450	645 x 415 (14)	417	5/8	1/2	G 1/2	G 1/2	61	76
WMH3A-LE020-EWL	LE-20X-EWL	8.1	820/506	785 x 415 (14)	527	7/8	1/2	G 1/2	G 1/2	106	121
WMH4A-LF030-EWL	LF-30X-EWL	8.1	820/506	785 x 415 (14)	527	7/8	1/2	G 1/2	G 1/2	109	124

## Electrical data

Condensing unit model	Compressor model	Compressor maximum operating current (A)	Compressor locked rotor current (A)
WDH1A-KJ007-EWL	KJ-7X-EWL	2.4	12.2
WDH1A-SJ010-EWL	KSJ-10X-EWL	3.0	15.5
WDH1A-KL015-EWL	KL-15X-EWL	3.4	19.1
WDH1A-SL020-EWL	KSL-20X-EWL	4.7	23.3
WDH2A-LF020-EWL	LF-20X-EWL	5.5	37.6
WDH2A-LJ020-EWL	LJ-20X-EWL	5.6	37.6
WDH3A-LL030-EWL	LL-30X-EWL	7.3	53.0
WDH4A-SG040-EWL	LSG-40X-EWL	8.5	68.5
WMH1A-KM007-EWL	KM-7X-EWL	2.4	12.2
WMH1A-KJ010-EWL	KJ-10X-EWL	3.2	15.5
WMH1A-SJ015-EWL	KSJ-15X-EWL	3.4	19.1
WMH3A-LE020-EWL	LE-20X-EWL	5.7	37.6
WMH4A-LF030-EWL	LF-30X-EWL	6.8	50.6

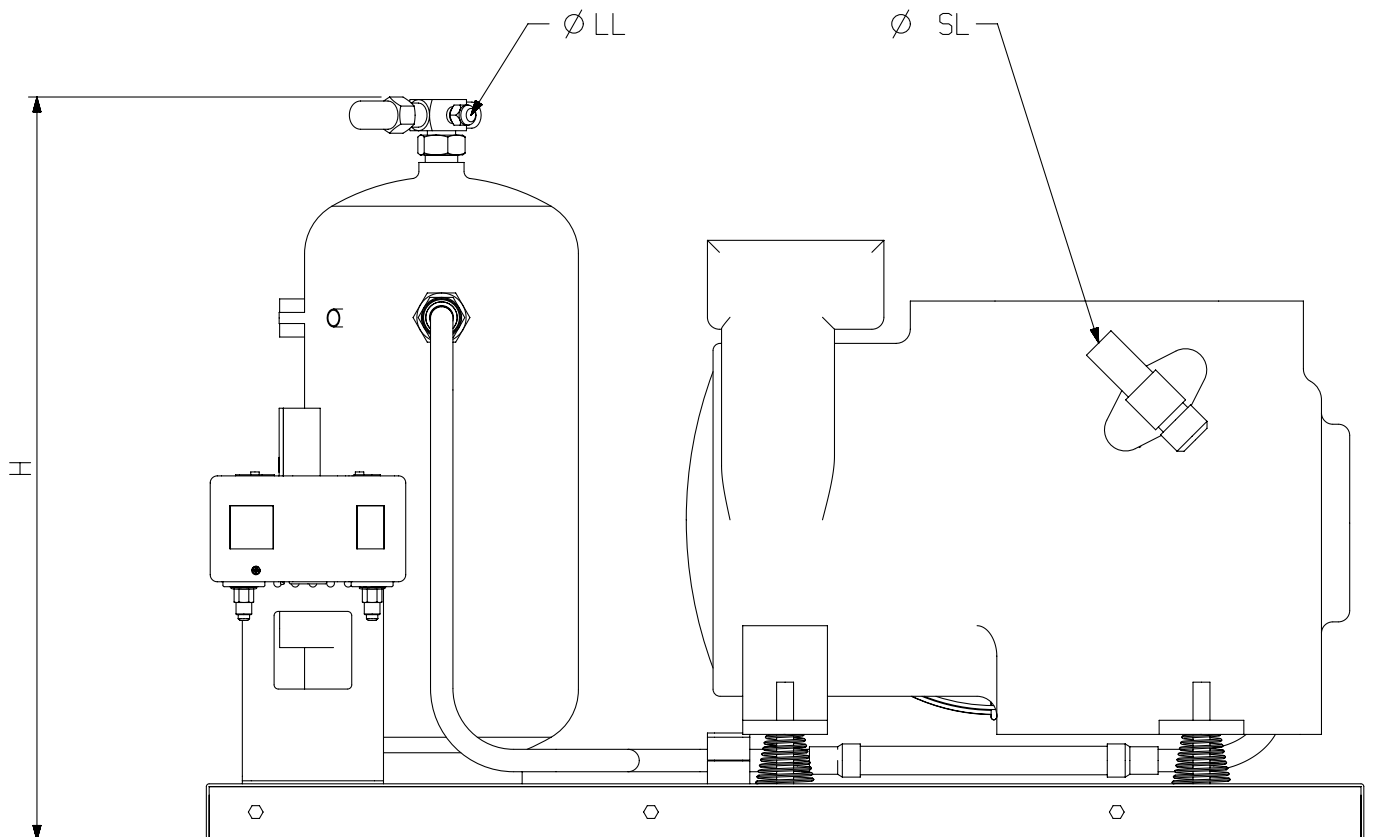
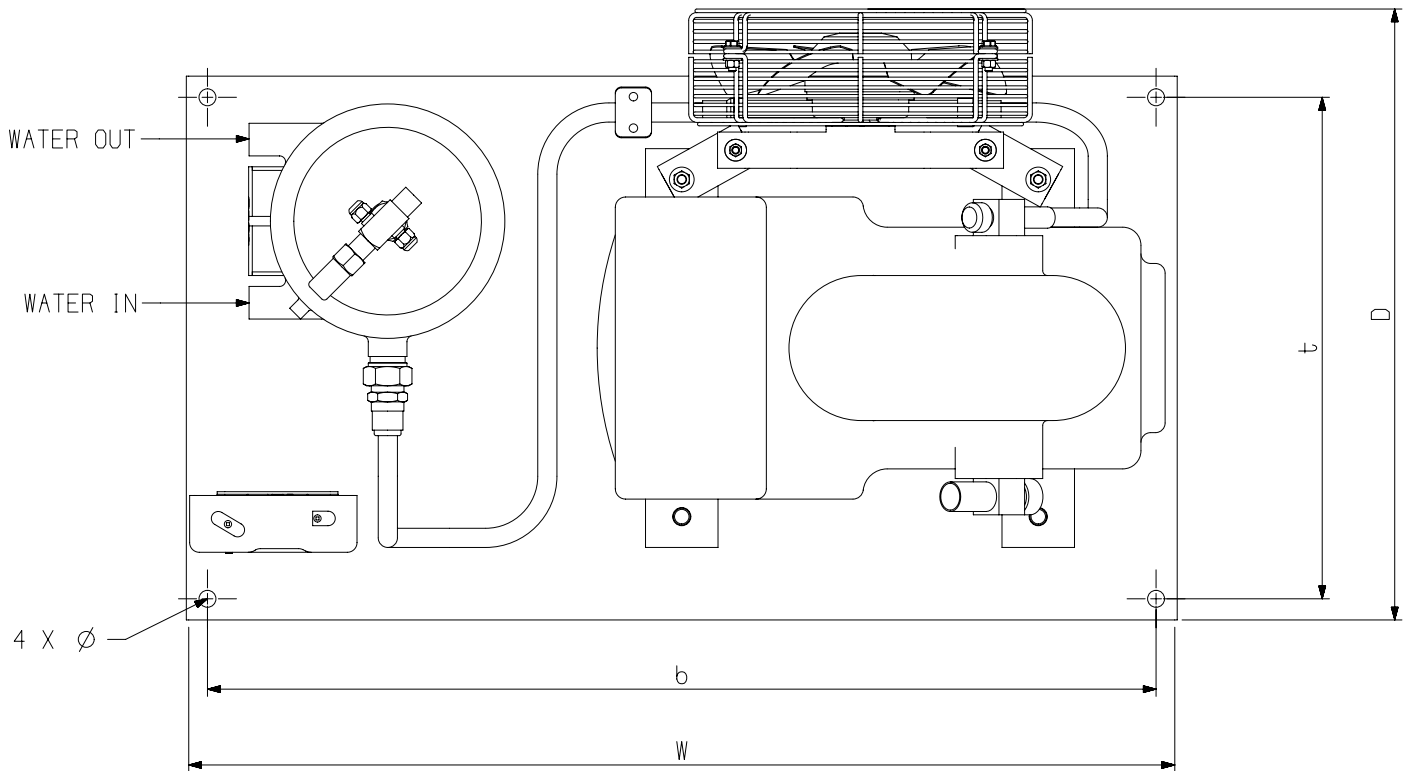
# Dimensional drawing

Ref dwg - WDH1, WMH1



# Dimensional drawing

Ref dwg - WDH2, WDH3, WDH4, WMH3, WMH4



## Contact List

### United Arab Emirates

Emerson Climate Technologies FZE  
Jebel Ali Free Zone, PO Box 26382  
Dubai, UAE  
Toll Free: 8000-441-3428  
Tel: + 971 4 8118100 | Fax: + 971 4 8865465

### Saudi Arabia

Emerson Arabia Inc.  
P.O Box 34332 – 3620 Building 7874, Unit 1, 67th Street  
2nd Industrial City  
Dammam, Saudi Arabia  
Toll Free: 8008443426  
Tel: + 966 3 8147560 | Fax: + 966 3 8147570

### South Africa

Emerson Climate Technologies  
24 Angus Crescent, Longmeadow Business Estate East  
Modderfontein, South Africa  
Toll Free: 0800-980-3711  
Tel: +27 11 451 3700 | Fax: +27 11 451 3800  
PartnerPlusMEA@Emerson.com

 EmersonMiddleEastAfrica   EmersonMEA

[EmersonClimateMEA.com](http://EmersonClimateMEA.com)

Emerson, Copeland Scroll and CoreSense are trademarks of Emerson Electric Co. or one of its affiliated companies.  
©2018 Emerson Climate Technologies, Inc. All rights reserved.



**CONSIDER IT SOLVED.™**