



EMERSON™

COMPRESSION TECHNOLOGY
Product Specification

HERMETIC RECIPROCATING COMPRESSOR
Model – CS10K7ME-TFM-XXX

Status – Preliminary

Design Engineering & Solutions Testing Center, Karad - India
Emerson Climate Technologies (India) Private Limited

			ECN No	F45-1120-0132
Kajal Dhane	Sunil Sutar	Mayur Nadgouda	Rev No / Date	A2 / 24.11.2020
Prepared By	Checked By	Approved By	Doc No–	CS10K7ME-TFM-XXX

CS10K7ME-TFM-XXX

R-404A, 50 Hz, 3-Phase, 380-420 V

Medium Temperature

Production Status: Please check with your local Emerson Climate Technologies Representative for international availability.

Performance

Mechanical

<table border="1"> <tr><td>Evaporator Temp. (°F)</td><td>20</td></tr> <tr><td>Condensing Temp. (°F)</td><td>120</td></tr> <tr><td>Return Gas Temp. (°F)</td><td>40</td></tr> <tr><td>Liquid Temp. (°F)</td><td>120</td></tr> <tr><td>Capacity (Btu/hr)</td><td>8450</td></tr> <tr><td>Power (W):</td><td>1380</td></tr> <tr><td>Current (Amps)'</td><td>2.8</td></tr> <tr><td>EER (Btu/Wh):</td><td>6.1</td></tr> <tr><td>Mass Flow (lbs/hr):</td><td></td></tr> <tr><td colspan="2"><u>Sound Data :</u></td></tr> <tr><td>Sound Power (dBA):</td><td>70 Avg. 73 Max.</td></tr> <tr><td>Vibration mils (peak-peak):</td><td>5</td></tr> <tr><td>Record Date:</td><td></td></tr> </table>	Evaporator Temp. (°F)	20	Condensing Temp. (°F)	120	Return Gas Temp. (°F)	40	Liquid Temp. (°F)	120	Capacity (Btu/hr)	8450	Power (W):	1380	Current (Amps)'	2.8	EER (Btu/Wh):	6.1	Mass Flow (lbs/hr):		<u>Sound Data :</u>		Sound Power (dBA):	70 Avg. 73 Max.	Vibration mils (peak-peak):	5	Record Date:		<table border="1"> <tr><td>Displacement (in³/Rev):</td><td>2.49</td></tr> <tr><td>Displacement(ft³/hr):</td><td>259.38</td></tr> <tr><td>Overall Length (in):</td><td>10.68</td></tr> <tr><td>Overall Width (in):</td><td>9.54</td></tr> <tr><td>Overall Height (in):</td><td>14</td></tr> <tr><td>Mounting Length (in):</td><td>7.5</td></tr> <tr><td>Mounting Width (in):</td><td>7.5</td></tr> <tr><td>Mounting Height (in):</td><td>0.75</td></tr> <tr><td>Suction Size (in),Type:</td><td>1-1/4 SPUD</td></tr> <tr><td>Discharge Size (in),Type:</td><td>'3/8 EU</td></tr> <tr><td>Initial Oil Charge (oz):</td><td>45</td></tr> <tr><td>Oil Recharge (oz)'</td><td>43</td></tr> <tr><td>Net Weight (lbs):</td><td>72</td></tr> <tr><td>Internal Free Volume (in³):</td><td>500</td></tr> <tr><td colspan="2">Horse Power:</td></tr> <tr><td colspan="2">'Overall compressor height on Copeland Brand Product's specified mounting grommets.</td></tr> </table>	Displacement (in ³ /Rev):	2.49	Displacement(ft ³ /hr):	259.38	Overall Length (in):	10.68	Overall Width (in):	9.54	Overall Height (in):	14	Mounting Length (in):	7.5	Mounting Width (in):	7.5	Mounting Height (in):	0.75	Suction Size (in),Type:	1-1/4 SPUD	Discharge Size (in),Type:	'3/8 EU	Initial Oil Charge (oz):	45	Oil Recharge (oz)'	43	Net Weight (lbs):	72	Internal Free Volume (in ³):	500	Horse Power:		'Overall compressor height on Copeland Brand Product's specified mounting grommets.	
Evaporator Temp. (°F)	20																																																										
Condensing Temp. (°F)	120																																																										
Return Gas Temp. (°F)	40																																																										
Liquid Temp. (°F)	120																																																										
Capacity (Btu/hr)	8450																																																										
Power (W):	1380																																																										
Current (Amps)'	2.8																																																										
EER (Btu/Wh):	6.1																																																										
Mass Flow (lbs/hr):																																																											
<u>Sound Data :</u>																																																											
Sound Power (dBA):	70 Avg. 73 Max.																																																										
Vibration mils (peak-peak):	5																																																										
Record Date:																																																											
Displacement (in ³ /Rev):	2.49																																																										
Displacement(ft ³ /hr):	259.38																																																										
Overall Length (in):	10.68																																																										
Overall Width (in):	9.54																																																										
Overall Height (in):	14																																																										
Mounting Length (in):	7.5																																																										
Mounting Width (in):	7.5																																																										
Mounting Height (in):	0.75																																																										
Suction Size (in),Type:	1-1/4 SPUD																																																										
Discharge Size (in),Type:	'3/8 EU																																																										
Initial Oil Charge (oz):	45																																																										
Oil Recharge (oz)'	43																																																										
Net Weight (lbs):	72																																																										
Internal Free Volume (in ³):	500																																																										
Horse Power:																																																											
'Overall compressor height on Copeland Brand Product's specified mounting grommets.																																																											
Electrical																																																											
<table border="1"> <tr><td>LRA-High"(Amp):</td><td>20</td></tr> <tr><td>LRA Low" (Amp):</td><td>NA</td></tr> <tr><td>LRA-Half Winding (Amp):</td><td>NA</td></tr> <tr><td>MCC (Amps)</td><td>5.1</td></tr> <tr><td>Max Operating Current(Amp):</td><td></td></tr> <tr><td>RLA, MCC/1.4:use for contactor selection (Amp):</td><td>3.6</td></tr> <tr><td>RLA, MCC/1.56:use for breaker & wire size selection (Amp):</td><td>3.3</td></tr> <tr><td>RPM</td><td>2900</td></tr> <tr><td colspan="2"> </td></tr> <tr><td>UL File No:</td><td>NA</td></tr> <tr><td>UL File Date:</td><td>NA</td></tr> <tr><td colspan="2">'Low and High refer to the low and high nominal voltage ranges for which the motor is approved.</td></tr> </table>	LRA-High"(Amp):	20	LRA Low" (Amp):	NA	LRA-Half Winding (Amp):	NA	MCC (Amps)	5.1	Max Operating Current(Amp):		RLA, MCC/1.4:use for contactor selection (Amp):	3.6	RLA, MCC/1.56:use for breaker & wire size selection (Amp):	3.3	RPM	2900			UL File No:	NA	UL File Date:	NA	'Low and High refer to the low and high nominal voltage ranges for which the motor is approved.		<table border="1"> <tr><td colspan="6" style="text-align: center;">Capacitors</td></tr> <tr><td><u>Type</u></td><td><u>Part NO</u></td><td><u>Low MFD</u></td><td><u>High MFD</u></td><td><u>Volts</u></td><td><u>User Description</u></td></tr> <tr><td>Start Capacitor</td><td>Not Applicable</td><td>NA</td><td></td><td></td><td></td></tr> <tr><td>Start Capacitor</td><td>Not Applicable</td><td>NA</td><td></td><td></td><td></td></tr> <tr><td>Run Capacitor</td><td>Not Applicable</td><td>NA</td><td></td><td></td><td></td></tr> </table>	Capacitors						<u>Type</u>	<u>Part NO</u>	<u>Low MFD</u>	<u>High MFD</u>	<u>Volts</u>	<u>User Description</u>	Start Capacitor	Not Applicable	NA				Start Capacitor	Not Applicable	NA				Run Capacitor	Not Applicable	NA							
LRA-High"(Amp):	20																																																										
LRA Low" (Amp):	NA																																																										
LRA-Half Winding (Amp):	NA																																																										
MCC (Amps)	5.1																																																										
Max Operating Current(Amp):																																																											
RLA, MCC/1.4:use for contactor selection (Amp):	3.6																																																										
RLA, MCC/1.56:use for breaker & wire size selection (Amp):	3.3																																																										
RPM	2900																																																										
UL File No:	NA																																																										
UL File Date:	NA																																																										
'Low and High refer to the low and high nominal voltage ranges for which the motor is approved.																																																											
Capacitors																																																											
<u>Type</u>	<u>Part NO</u>	<u>Low MFD</u>	<u>High MFD</u>	<u>Volts</u>	<u>User Description</u>																																																						
Start Capacitor	Not Applicable	NA																																																									
Start Capacitor	Not Applicable	NA																																																									
Run Capacitor	Not Applicable	NA																																																									

Alternate Applications

<u>Refrigerant</u>	<u>Voltage</u>	<u>Phase</u>	<u>Freq (Hz)</u>	<u>Application</u>

Rating Conditions

40 °F Return Gas Temp
 0 K Subcooling
 95 °F Ambient Air Over

Medium Temperature

CS10K7ME-TFM

R404A

Hermetic Reciprocating Compressor @ TFM

380/420-3-50

Declared as 65 °F Return Gas

50 Hz Operation

Condensing Temperature °C (°F)

Evaporating Temperature °C (°F)

	-31.1(-25)	-26.1(-15)	-23.3(-10)	-12.2(10)	-6.7 (20)	-1.1 (30)	1.7 (35)	5 (41)	7.25(45)
60(140)									
C			1204	3743	5358	7252	12573	14583	16594
P			970	1288	1443	1597	1921	2029	2137
A			2.0	2.6	2.9	3.2	3.9	4.1	4.3
M									
E			1.2	2.9	3.7	4.5	6.5	7.2	7.8
%									
54.4(130)									
C		1283	1873	4873	6822	9119	14604	16344	18084
P		880	967	1277	1420	1560	1799	1886	1972
A		1.8	2.0	2.6	2.9	3.2	3.6	3.8	4.0
M									
E		1.5	1.9	3.8	4.8	5.8	8.1	8.7	9.2
%									
48.9(120)									
C	874	1997	2665	6153	8450	11165	15718	17691	19664
P	696	877	960	1250	1380	1506	1726	1795	1865
A	1.4	1.8	1.9	2.5	2.8	3.1	3.5	3.6	3.8
M									
E	1.3	2.3	2.8	4.9	6.1	7.4	9.1	9.9	10.5
%									
43.3(110)									
C	1552	2793	3546	7549	10207	13353	17841	20052	22263
P	689	864	942	1212	1329	1441	1622	1674	1727
A	1.4	1.8	1.9	2.5	2.7	2.9	3.3	3.4	3.5
M									
E	2.3	3.2	3.8	6.2	7.7	9.3	11.0	12.0	12.9
%									
37.8(100)									
C	2263	3636	4481	9024	12058	15648	20993	22941	24889
P	677	845	919	1168	1272	1369	1500	1536	1605
A	1.4	1.7	1.9	2.4	2.6	2.8	3.0	3.1	3.3
M									
E	3.3	4.3	4.9	7.7	9.5	11.4	14.0	14.9	15.5
%									
32.0(90)									
C	2971	4490	5433	10545	13967	18014	23581	26797	30014
P	665	825	895	1124	1215	1297	1435	1481	1527
A	1.3	1.7	1.8	2.3	2.5	2.6	2.9	3.0	3.1
M									
E	4.5	5.4	6.1	9.4	11.5	13.9	16.4	18.1	19.7
%									
26.7(80)									
C	3642	5319	6368	12075	15898	20416	26223	29711	33199
P	657	811	877	1084	1162	1229	1383	1445	1480
A	1.3	1.6	1.8	2.2	2.4	2.5	2.8	2.9	3.0
M									
E	5.5	6.6	7.3	11.1	13.7	16.6	19.0	20.6	22.4
%									
21.1(70)									
C	4240	6089	7250	13578	17816	22819	28933	32682	36430
P	660	807	868	1054	1119	1170	1324	1376	1401
A	1.3	1.6	1.8	2.1	2.3	2.4	2.7	2.8	2.8
M									
E	6.4	7.5	8.4	12.9	15.9	19.5	21.9	23.7	26.0
%									

C: Capacity (Btu/hr), P: Power {W}, A: Current (Amps), M: Mass Flow (lb/hr), E: EER (Btu/Wh), %: Isentropic Efficiency (%)

Nominal Performance Values (+5%) based on 72 hours run in. Subject to change without notice. Current @ 400V

CS10K7ME-TFM-XXX

R-404A, 50 Hz, 3-Phase, 380-420 V
High Temperature

Production Status: Available for Sale for All Customers. Please check with your local Emerson Climate Technologies Representative for international availability

Electrical Components

Internal Protector	
Part No:	Usage Description
<u>Vendor Part Number</u>	<u>Vendor Name</u>
34HM-200-56	T1

Stator			
Part No:			
Resistance:	7%	Start Wdg:	Run Wdg: 7.9

Potential	
Part No:	Usage Description
NA	
<u>Vendor Part Number</u>	<u>Vendor Name</u>

Start Capacitor			
Part No:		Low MFD:	0
Type:		High MFD:	0
User Description:	High Torque	Volts:	0

Start Capacitor			
Part No:	NA	Low MFD :	0
Type:		High MFD:	0
User Description:	High Torque	Volts	0

Run Capacitor			
Part No	NA	Low MFD:	0
Type		High MFD:	0
User Description	High Torque	Volts:	0

CS10K7ME-TFM-XXX

R-404A, 50 Hz, 3 -Phase, 380-420 V
High Temperature

Production Status: Available for Sale for All Customers. Please check with your local Emerson Climate Technologies Representative for international availability

Service Parts

<u>Reference</u>	<u>Component</u>	<u>Quantity</u>	<u>Description</u>	<u>Comment</u>
1	NA			
2	NA			
3	NA			

CS10K7ME-TFM-XXX

R-404A, 50 Hz, 3 -Phase, 380-420 V
Medium Temperature

Production Status: Please check with your local Emerson Climate Technologies Representative for international availability

Accessories

<u>Category</u>	<u>Part Number</u>	<u>Description</u>
Crankcase Heater	018-0088-00	40 @ 240V
Electrical		
Miscellaneous		
Mounting		

CS10K7ME-TFM-XXX

R-404A, 50 Hz, 3-Phase, 380/420 V
 Medium Temperature

Production Status: Please check with your local Emerson Climate Technologies Representative for international availability.

Performance

Mechanical

<table border="1"> <tr><td>Evaporator Temp. (°C)</td><td>-6.7</td></tr> <tr><td>Condensing Temp. (°C)</td><td>48.9</td></tr> <tr><td>Return Gas Temp. (°C)</td><td>4.4</td></tr> <tr><td>Liquid Temp. (°C)</td><td>48.9</td></tr> <tr><td>Capacity (W)</td><td>2476</td></tr> <tr><td>Power (W):</td><td>1416</td></tr> <tr><td>Current (Amps)'</td><td>6.9</td></tr> <tr><td>COP (W/W):</td><td>1.7</td></tr> <tr><td>Mass Flow (lbs/hr):</td><td></td></tr> <tr><td><u>Sound Data :</u></td><td></td></tr> <tr><td>Sound Power (dBA):</td><td>74 Avg. 78 Max.</td></tr> <tr><td>Vibration mils (peak-peak):</td><td>3.5</td></tr> <tr><td>Record Date:</td><td>9/15/2020</td></tr> </table>	Evaporator Temp. (°C)	-6.7	Condensing Temp. (°C)	48.9	Return Gas Temp. (°C)	4.4	Liquid Temp. (°C)	48.9	Capacity (W)	2476	Power (W):	1416	Current (Amps)'	6.9	COP (W/W):	1.7	Mass Flow (lbs/hr):		<u>Sound Data :</u>		Sound Power (dBA):	74 Avg. 78 Max.	Vibration mils (peak-peak):	3.5	Record Date:	9/15/2020	<table border="1"> <tr><td>Displacement (cc/Rev):</td><td>40.8</td></tr> <tr><td>Displacement(m^3/hr):</td><td>7.3</td></tr> <tr><td>Overall Length (mm):</td><td>271</td></tr> <tr><td>Overall Width (mm):</td><td>242</td></tr> <tr><td>Overall Height (mm):</td><td>356</td></tr> <tr><td>Mounting Length (mm):</td><td>191</td></tr> <tr><td>Mounting Width (mm):</td><td>191</td></tr> <tr><td>Mounting Height (mm):</td><td>19</td></tr> <tr><td>Suction Size (mm),Type:</td><td>'32 SPUD</td></tr> <tr><td>Discharge Size (mm),Type:</td><td>25 SPUD</td></tr> <tr><td>Initial Oil Charge (ml):</td><td>1331</td></tr> <tr><td>Oil Recharge (ml)'</td><td>1272</td></tr> <tr><td>Net Weight (kg):</td><td>32.7</td></tr> <tr><td>Internal Free Volume (cm^3):</td><td>8194</td></tr> <tr><td>Horse Power:</td><td></td></tr> <tr><td colspan="2">'Overall compressor height on Copeland Brand Product's specified mounting grommets.</td></tr> </table>	Displacement (cc/Rev):	40.8	Displacement(m^3/hr):	7.3	Overall Length (mm):	271	Overall Width (mm):	242	Overall Height (mm):	356	Mounting Length (mm):	191	Mounting Width (mm):	191	Mounting Height (mm):	19	Suction Size (mm),Type:	'32 SPUD	Discharge Size (mm),Type:	25 SPUD	Initial Oil Charge (ml):	1331	Oil Recharge (ml)'	1272	Net Weight (kg):	32.7	Internal Free Volume (cm^3):	8194	Horse Power:		'Overall compressor height on Copeland Brand Product's specified mounting grommets.	
Evaporator Temp. (°C)	-6.7																																																										
Condensing Temp. (°C)	48.9																																																										
Return Gas Temp. (°C)	4.4																																																										
Liquid Temp. (°C)	48.9																																																										
Capacity (W)	2476																																																										
Power (W):	1416																																																										
Current (Amps)'	6.9																																																										
COP (W/W):	1.7																																																										
Mass Flow (lbs/hr):																																																											
<u>Sound Data :</u>																																																											
Sound Power (dBA):	74 Avg. 78 Max.																																																										
Vibration mils (peak-peak):	3.5																																																										
Record Date:	9/15/2020																																																										
Displacement (cc/Rev):	40.8																																																										
Displacement(m^3/hr):	7.3																																																										
Overall Length (mm):	271																																																										
Overall Width (mm):	242																																																										
Overall Height (mm):	356																																																										
Mounting Length (mm):	191																																																										
Mounting Width (mm):	191																																																										
Mounting Height (mm):	19																																																										
Suction Size (mm),Type:	'32 SPUD																																																										
Discharge Size (mm),Type:	25 SPUD																																																										
Initial Oil Charge (ml):	1331																																																										
Oil Recharge (ml)'	1272																																																										
Net Weight (kg):	32.7																																																										
Internal Free Volume (cm^3):	8194																																																										
Horse Power:																																																											
'Overall compressor height on Copeland Brand Product's specified mounting grommets.																																																											
Electrical																																																											
<table border="1"> <tr><td>LRA-High"(Amp):</td><td>20</td></tr> <tr><td>LRA Low" (Amp):</td><td>NA</td></tr> <tr><td>LRA-Half Winding (Amp):</td><td>NA</td></tr> <tr><td>MCC (Amps)</td><td>5.1</td></tr> <tr><td>Max Operating Current(Amp):</td><td></td></tr> <tr><td>RLA, MCC/1.4:use for contactor selection (Amp):</td><td>3.6</td></tr> <tr><td>RLA, MCC/1.56:use for breaker & wire size selection (Amp):</td><td>3.3</td></tr> <tr><td>RPM</td><td>2900</td></tr> <tr><td>UL File No:</td><td>NA</td></tr> <tr><td>UL File Date:</td><td>NA</td></tr> <tr><td colspan="2">'Low and High refer to the low and high nominal voltage ranges for which the motor is approved.</td></tr> </table>	LRA-High"(Amp):	20	LRA Low" (Amp):	NA	LRA-Half Winding (Amp):	NA	MCC (Amps)	5.1	Max Operating Current(Amp):		RLA, MCC/1.4:use for contactor selection (Amp):	3.6	RLA, MCC/1.56:use for breaker & wire size selection (Amp):	3.3	RPM	2900	UL File No:	NA	UL File Date:	NA	'Low and High refer to the low and high nominal voltage ranges for which the motor is approved.		<table border="1"> <tr><td colspan="5" style="text-align: center;">Capacitors</td></tr> <tr><td><u>Type</u></td><td><u>Part NO</u></td><td><u>Low MFD</u></td><td><u>High MFD</u></td><td><u>Volts User Description</u></td></tr> <tr><td>Start Capacitor</td><td>Not Applicable</td><td>NA</td><td></td><td></td></tr> <tr><td>Start Capacitor</td><td>Not Applicable</td><td>NA</td><td></td><td></td></tr> <tr><td>Run Capacitor</td><td>Not Applicable</td><td>NA</td><td></td><td></td></tr> </table>	Capacitors					<u>Type</u>	<u>Part NO</u>	<u>Low MFD</u>	<u>High MFD</u>	<u>Volts User Description</u>	Start Capacitor	Not Applicable	NA			Start Capacitor	Not Applicable	NA			Run Capacitor	Not Applicable	NA													
LRA-High"(Amp):	20																																																										
LRA Low" (Amp):	NA																																																										
LRA-Half Winding (Amp):	NA																																																										
MCC (Amps)	5.1																																																										
Max Operating Current(Amp):																																																											
RLA, MCC/1.4:use for contactor selection (Amp):	3.6																																																										
RLA, MCC/1.56:use for breaker & wire size selection (Amp):	3.3																																																										
RPM	2900																																																										
UL File No:	NA																																																										
UL File Date:	NA																																																										
'Low and High refer to the low and high nominal voltage ranges for which the motor is approved.																																																											
Capacitors																																																											
<u>Type</u>	<u>Part NO</u>	<u>Low MFD</u>	<u>High MFD</u>	<u>Volts User Description</u>																																																							
Start Capacitor	Not Applicable	NA																																																									
Start Capacitor	Not Applicable	NA																																																									
Run Capacitor	Not Applicable	NA																																																									

Alternate Applications

<u>Refrigerant</u>	<u>Voltage</u>	<u>Phase</u>	<u>Freq (Hz)</u>	<u>Application</u>

Rating Conditions

40 °F Return Gas Temp
 0 K Subcooling
 95 °F Ambient Air Over

Medium Temperature

CS10K7ME-TFM-XXX

R404A

Hermetic Reciprocating Compressor @ TFM

380/420-3-50

Declared as 65 °F Return Gas

50 Hz Operation

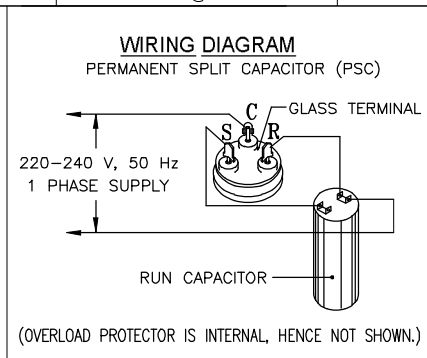
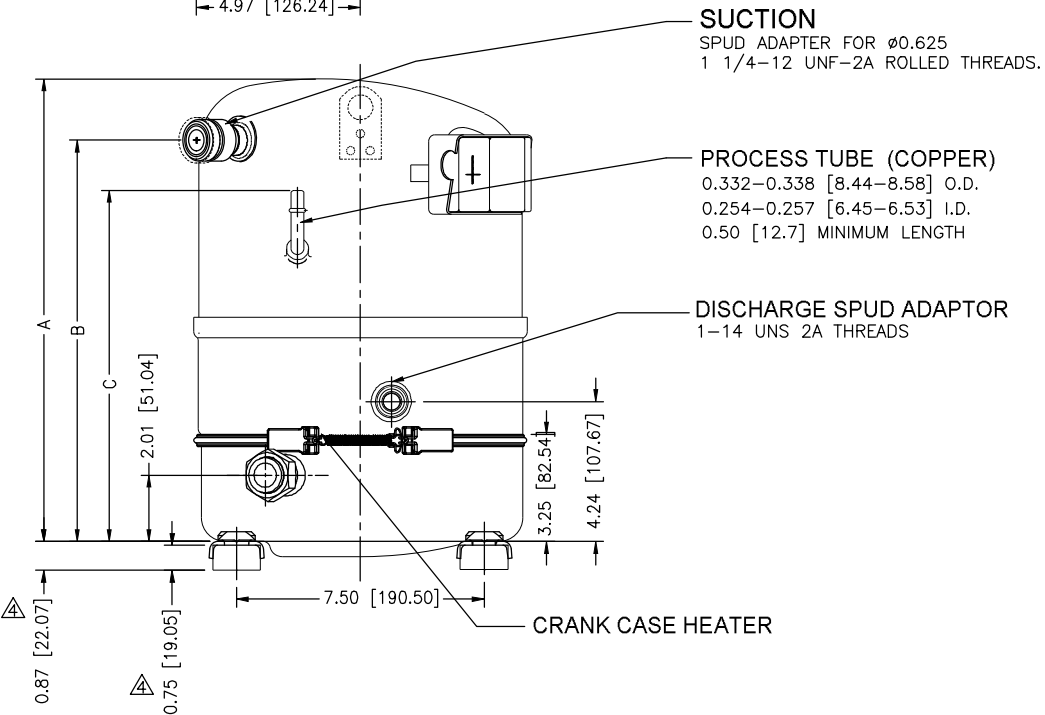
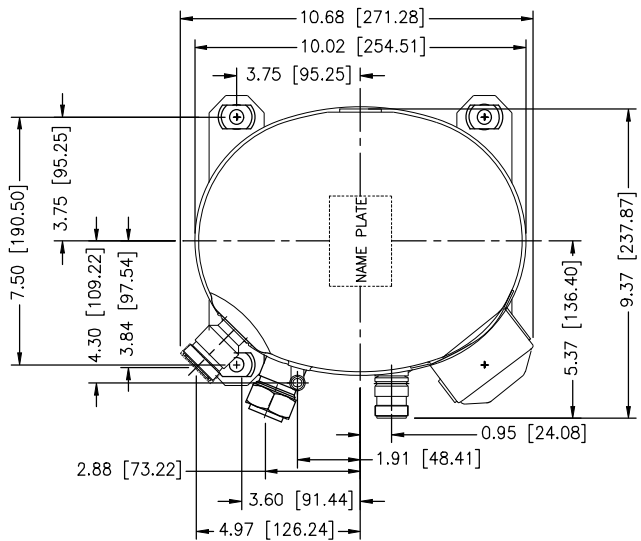
Condensing Temperature °C (°F)

Evaporating Temperature °C (°F)

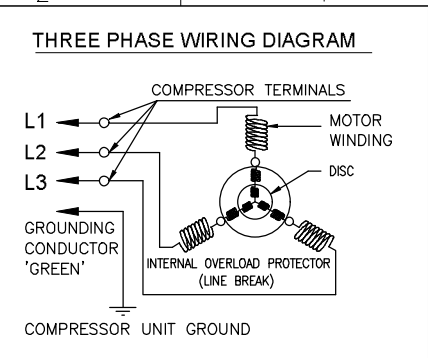
	-31.1(-25)	-26.1(-15)	-23.3(-10)	-12.2(10)	-6.7 (20)	-1.1 (30)	1.7 (35)	5 (41)	7.25(45)
60(140)									
C			353	1097	1570	2125	3685	4274	4863
P			981	1311	1479	1643	1976	2087	2199
A			4.8	6.4	7.2	8.0	9.7	10.2	10.7
M									
E			0.4	0.8	1.1	1.3	1.9	2.0	2.2
%									
54.4(130)									
C		376	549	1428	1999	2673	4280	4790	5300
P		892	980	1304	1454	1599	1844	1933	2022
A		4.4	4.8	6.4	7.1	7.8	9.0	9.4	9.9
M									
E		0.4	0.6	1.1	1.4	1.7	2.3	2.5	2.6
%									
48.9(120)									
C	256	585	781	1803	2476	3272	4606	5185	5763
P	708	891	977	1283	1416	1542	1767	1838	1909
A	3.5	4.4	4.8	6.3	6.9	7.5	8.6	9.0	9.3
M									
E	0.4	0.7	0.8	1.4	1.7	2.1	2.6	2.8	3.0
%									
43.3(110)									
C	455	819	1039	2212	2991	3913	5229	5877	6525
P	707	890	972	1250	1368	1478	1664	1717	1771
A	3.5	4.3	4.7	6.1	6.7	7.2	8.1	8.4	8.7
M									
E	0.6	0.9	1.1	1.8	2.2	2.6	3.1	3.4	3.7
%									
37.8(100)									
C	663	1066	1313	2645	3534	4586	6152	6723	7294
P	709	881	958	1211	1314	1409	1544	1581	1652
A	3.5	4.3	4.7	5.9	6.4	6.9	7.5	7.7	8.1
M									
E	0.9	1.2	1.4	2.2	2.7	3.3	4.0	4.3	4.4
%									
32.0(90)									
C	871	1316	1592	3090	4093	5279	6911	7854	8796
P	702	866	937	1167	1258	1338	1481	1528	1575
A	3.4	4.2	4.6	5.7	6.1	6.5	7.2	7.5	7.7
M									
E	1.2	1.5	1.7	2.6	3.3	3.9	4.7	5.1	5.6
%									
26.7(80)									
C	1067	1559	1866	3539	4659	5983	7685	8707	9730
P	691	846	913	1123	1202	1270	1429	1493	1530
A	3.4	4.1	4.5	5.5	5.9	6.2	7.0	7.3	7.5
M									
E	1.5	1.8	2.0	3.2	3.9	4.7	5.4	5.8	6.4
%									
21.1(70)									
C	1243	1785	2125	3979	5221	6688	8480	9578	10677
P	678	827	890	1083	1151	1208	1367	1421	1447
A	3.3	4.0	4.3	5.3	5.6	5.9	6.7	6.9	7.1
M									
E	1.8	2.2	2.4	3.7	4.5	5.5	6.2	6.7	7.4
%									

C: Capacity (W), P: Power {W}, A: Current (Amps), M: Mass Flow (lb/hr), E: EER {W/W}, %: Isentropic Efficiency {%}

Nominal Performance Values (+5%) based on 72 hours run in. Subject to change without notice. Current @ 400V



VIEW 'P'



VIEW 'Q'

- NOTES :**
1. FOOT MOUNTING BOLT TORQUE SHOULD NOT EXCEED 12 lb-ft (16.27 N-m).
 2. COMPRESSOR COLOUR - BLACK.
 3. BRACKETED DIMENSIONS ARE IN mm.
 4. RUBBER GROMMET MAY COMPRESS BY 0.075 [1.91] ±0.025 [0.63] APPROXIMATELY DUE TO COMPRESSOR WEIGHT. THE RELATED DIMENSIONS MAY VARY ACCORDINGLY.
 5. FOR PERFORMANCE DETAILS, REFER PRODUCT SPECIFICATION.

GUIDELINES FOR HANDLING AND DISPOSAL OF PRODUCTS :

1. HANDLE PRODUCT WITH CARE AND IN UPRIGHT POSITION TO AVOID SPILLAGE OF COMPRESSOR OIL.
2. DISPOSE OFF RUBBER TUBE PLUGS THROUGH GOVERNMENT AUTHORIZED SCRAP CENTERS.
3. IF PRODUCT IS TO BE DISPOSED OFF THEN, PLEASE DO IT THROUGH GOVERNMENT AUTHORISED SCRAP CENTERS.

PRELIMINARY

	<small>INTERPRET PER ASME Y14.5M-1994 AND EMERSON DESIGN STANDARDS DS2002</small> DO NOT SCALE DRAWING		<small>CONFIDENTIALITY NOTICE</small> THIS DRAWING AND INFORMATION CONTAINED HEREIN ARE THE EXCLUSIVE PROPERTY OF EMERSON CLIMATE TECHNOLOGIES, INC. AND/OR ITS AFFILIATES COLLECTIVELY EMERSON AND SHALL BE RETURNED UPON DEMAND AND SHALL NOT BE REPRODUCED IN WHOLE OR IN PART, DISCLOSED TO ANYONE ELSE OR USED, WITHOUT THE WRITTEN CONSENT OF EMERSON.		
	<small>CRITICAL PRODUCT CHARACTERISTIC</small> UNLESS OTHERWISE SPECIFIED DIMENSIONS ARE INCH OR [MILLIMETER] TOLERANCES: 2-PLACE ± 0.005 3-PLACE ± 0.005 ANGULAR ± 0.3°	<small>DATE</small> 10.10.2020	<small>DRAWN BY</small> DVM	<small>SUPERSEDES DWG. NO. / REV. NO.</small> ----- / -----	<small>DATE FORMAT</small> MM-DD-YY
	<small>TITLE</small> REF DWG=WELD COMP ASSM		<small>SCALE</small> 1:2	<small>DRAWING NUMBER</small> T012-497-A033-00	<small>SHEET 1 OF 2</small> 4

COPYRIGHT EMERSON - CONFIDENTIAL

8	7	6	5	4	3	2	1
MODEL	TOTAL HEIGHT 'A'	SUCTION HEIGHT 'B'	PROCESS HEIGHT 'C'	WIRING DIAGRAM	CRANKCASE HEATER		
CS10K7ME-PFZ-137	13.00	11.15	11.77	VIEW 'P'	40@ 240		
CS10K7ME-TFM-13A	13.24	11.38	10.25	VIEW 'Q'	40@ 240		
CS13K7ME-PFZ-137	13.75	11.90	10.52	VIEW 'P'	40@ 240		
CS13K7ME-TFM-13A	13.24	11.38	10.25	VIEW 'Q'	40@ 240		
CS17K7ME-PFZ-137	13.75	11.90	10.52	VIEW 'P'	40@ 240		
CS17K7ME-TFM-13A	13.50	11.65	10.52	VIEW 'Q'	40@ 240		
CS20K7ME-PFZ-137	14.26	12.40	12.87	VIEW 'P'	40@ 240		
CS20K7ME-TFM-13A	14.00	12.15	10.52	VIEW 'Q'	40@ 240		

PRELIMINARY



INTERPRET PER ASME
Y14.5M-1994 AND
EMERSON DESIGN
STANDARDS DS3002

DO NOT SCALE DRAWING

CRITICAL PRODUCT CHARACTERISTIC

UNLESS OTHERWISE SPECIFIED
DIMENSIONS ARE INCH OR (MILLIMETER)

TOLERANCES:
2-PLACE ± 0.005
3-PLACE ± 0.005
ANGULAR ± 0.3°

ECN	2	DRAWING UPDATED.	10.29.20	DVM	MMN
ECN	1	MODEL NAME UPDATED.	10.14.20	DVM	MMN
ECN	0	RELEASED	10.10.20	DVM	MMN
ENG NOTICE NO.	REV.NO.	REVISIONS	DATE	BY	CHKD
35		CONFIDENTIALITY NOTICE THIS DRAWING AND INFORMATION CONTAINED HEREIN ARE THE EXCLUSIVE PROPERTY OF EMERSON CLIMATE TECHNOLOGIES, INC. AND/OR ITS AFFILIATES (COLLECTIVELY "EMERSON") AND SHALL BE RETURNED UPON DEMAND AND SHALL NOT BE REPRODUCED IN WHOLE OR IN PART, DISCLOSED TO ANYONE ELSE OR USED, WITHOUT THE WRITTEN CONSENT OF EMERSON.			
MATERIAL SPECIFICATION		DRAWN BY	SUPERSEDES DWG. NO. / REV. NO.		
△		DVM	DATE	SCALE	DATE FORMAT
			10.10.2020	1:2	MM-DD-YY
TITLE			DRAWING NUMBER	SHEET 1 OF 1	DWG SIZE
REF DWG-WELD COMP ASSM			T012-497-A033-00	4	4

UNCONTROLLED COPY - DO NOT MODIFY

© COPYRIGHT EMERSON | CONFIDENTIAL